

PARTS MANUAL



MODEL J3036H55 CONVERTIBLE EDGING WALK-BEHIND TROWEL

(HONDA GX160UT2QX2 GASOLINE ENGINE)

Revision #1 (08/14/19)

To find the latest revision of this publication or associated operation manual, visit our website at: www.multiquip.com



THIS MANUAL MUST ACCOMPANY THE EQUIPMENT AT ALL TIMES.

PN: 13413

TABLE OF CONTENTS

J3036H55 Convertible Edging Walk-Behind Trowel

| | |
|--|---|
| Table of Contents..... | 2 |
| Explanation of Code in Remarks Column..... | 4 |
| Suggested Spare Parts | 5 |

Component Drawings

| | |
|------------------------------------|-------|
| Nameplate and Decals Assembly..... | 6–7 |
| Standard Handle Assembly | 8–9 |
| Quick-Pitch™ Handle Assembly..... | 10–13 |
| Guard Ring Assembly..... | 14–15 |
| Gearbox Assembly | 16–17 |
| Engine and Clutch Assembly..... | 18–19 |
| Spider Assembly..... | 20–21 |
| Engine Service Parts..... | 22–23 |

NOTICE

Specifications and part numbers are subject to change without notice.

[illegible]

EXPLANATION OF CODE IN REMARKS COLUMN

The following section explains the different symbols and remarks used in the Parts section of this manual. Use the help numbers found on the back page of the manual if there are any questions.

NOTICE

The contents and part numbers listed in the parts section are subject to change **without notice**. Multiquip does not guarantee the availability of the parts listed.

SAMPLE PARTS LIST

| NO. | PART NO. | PART NAME | QTY. | REMARKS |
|-----|----------|----------------------|------|---------------------|
| 1 | 12345 | BOLT | 1 | INCLUDES ITEMS W/% |
| 2% | | WASHER, 1/4 IN. | | NOT SOLD SEPARATELY |
| 2% | 12347 | WASHER, 3/8 IN. ... | 1 | MQ-45T ONLY |
| 3 | 12348 | HOSE | A/R | MAKE LOCALLY |
| 4 | 12349 | BEARING | 1 | S/N 2345B AND ABOVE |

NO. Column

Unique Symbols — All items with same unique symbol (@, #, +, %, or >) in the number column belong to the same assembly or kit, which is indicated by a note in the “Remarks” column.

Duplicate Item Numbers — Duplicate numbers indicate multiple part numbers, which are in effect for the same general item, such as different size saw blade guards in use or a part that has been updated on newer versions of the same machine.

NOTICE

When ordering a part that has more than one item number listed, check the remarks column for help in determining the proper part to order.

PART NO. Column

Numbers Used — Part numbers can be indicated by a number, a blank entry, or TBD.

TBD (To Be Determined) is generally used to show a part that has not been assigned a formal part number at the time of publication.

A blank entry generally indicates that the item is not sold separately or is not sold by Multiquip. Other entries will be clarified in the “Remarks” Column.

QTY. Column

Numbers Used — Item quantity can be indicated by a number, a blank entry, or A/R.

A/R (As Required) is generally used for hoses or other parts that are sold in bulk and cut to length.

A blank entry generally indicates that the item is not sold separately. Other entries will be clarified in the “Remarks” Column.

REMARKS Column

Some of the most common notes found in the “Remarks” Column are listed below. Other additional notes needed to describe the item can also be shown.

Assembly/Kit — All items on the parts list with the same unique symbol will be included when this item is purchased.

Indicated by:

“INCLUDES ITEMS W/(unique symbol)”

Serial Number Break — Used to list an effective serial number range where a particular part is used.

Indicated by:

“S/N XXXXX AND BELOW”

“S/N XXXX AND ABOVE”

“S/N XXXX TO S/N XXX”

Specific Model Number Use — Indicates that the part is used only with the specific model number or model number variant listed. It can also be used to show a part is NOT used on a specific model or model number variant.

Indicated by:

“XXXXX ONLY”

“NOT USED ON XXXX”

“Make/Obtain Locally” — Indicates that the part can be purchased at any hardware shop or made out of available items. Examples include battery cables, shims, and certain washers and nuts.

“Not Sold Separately” — Indicates that an item cannot be purchased as a separate item and is either part of an assembly/kit that can be purchased, or is not available for sale through Multiquip.

SUGGESTED SPARE PARTS

J3036H55 WALK-BEHIND TROWEL

1 to 3 Units

| Qty. | P/N | Description |
|--------|-------------|--------------------------|
| 2..... | 22762..... | HANDLE GRIP |
| 1..... | 21047..... | KIT, BEARINGS/SEALS |
| 1..... | 21046..... | KIT, SEALS |
| 1..... | 20285..... | PITCH CABLE (STD.) |
| 1..... | 20297..... | PITCH CABLE (Q.P.) |
| 1..... | 21243..... | KIT, THROTTLE |
| 1..... | 10968..... | KIT, THRUST BEARING |
| 1..... | 24424..... | THRUST COLLAR |
| 1..... | 10639..... | WEAR PLATE |
| 1..... | 24386..... | WEAR PLATE, UPPER |
| 2..... | 30648..... | V-BELT, A26 |
| 2..... | 20111..... | LUBRICANT, GEARBOX |
| 1..... | 30344..... | BELT GUARD |
| 3..... | 20856..... | SWITCH, CENTRIFUGAL STOP |
| 4..... | 1157 A..... | BUSHING, TROWEL ARM |
| 4..... | 30638..... | ASSY., TROWEL ARM |

NOTICE

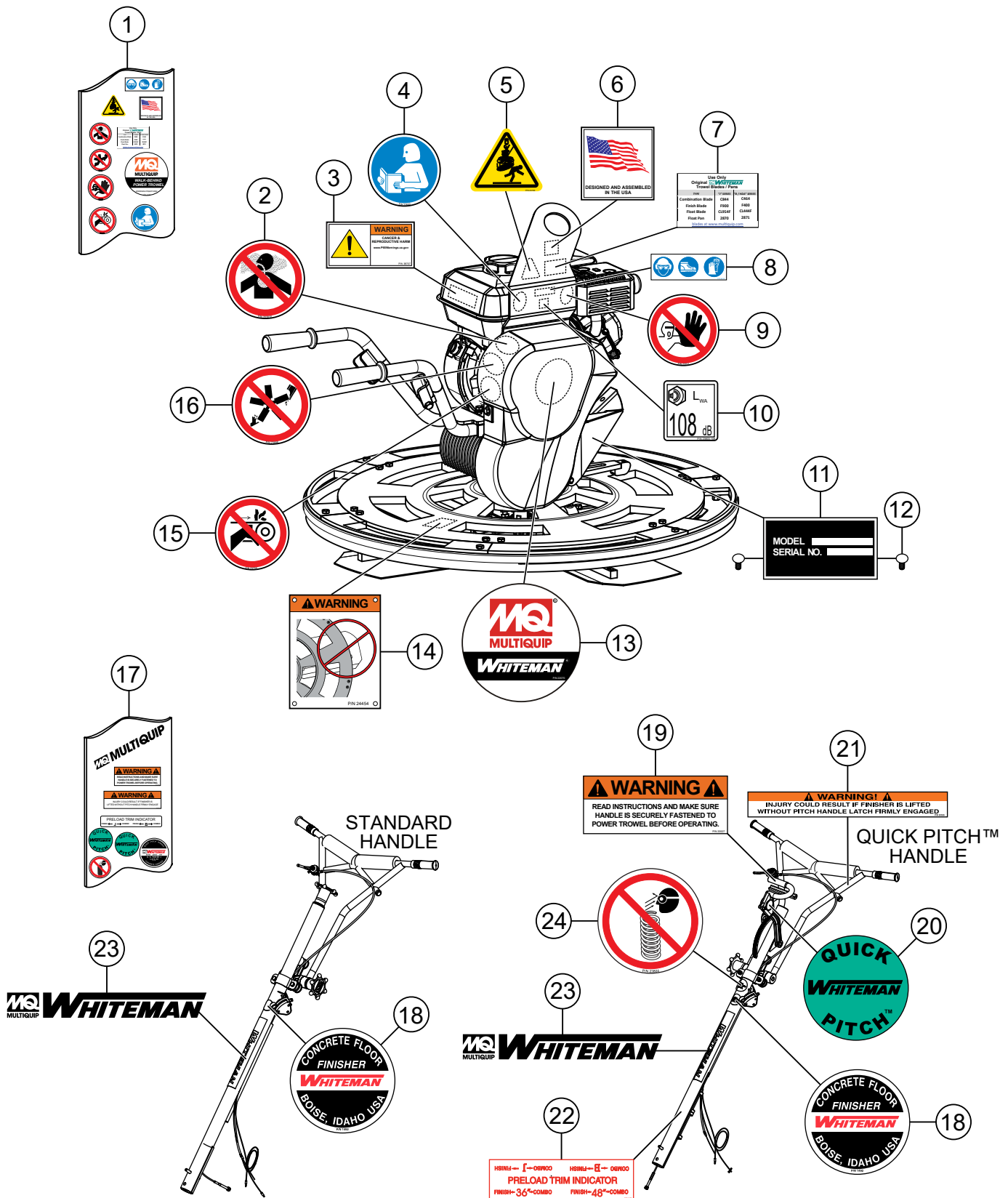
Part numbers on this Suggested Spare Parts list may supersede/replace the part numbers shown in the following parts lists.

HONDA GX160UT2QX2 GASOLINE ENGINE

1 to 3 Units

| Qty. | P/N | Description |
|--------|------------------|------------------------|
| 1..... | 34150ZH7023..... | ALERT UNIT, OIL |
| 1..... | 17620Z4H900..... | CAP, FUEL TANK, CHROME |
| 3..... | 17210ZE1517..... | ELEMENT, AIR CLEANER |
| 2..... | 17218ZE1507..... | FILTER, OUTER FOAM |
| 1..... | 28462ZH8003..... | ROPE, RECOIL STARTER |
| 1..... | 28461Z4M305..... | KNOB, RECOIL STARTER |
| 3..... | 9807956846..... | SPARK PLUG, BPR6ES |
| 1..... | 15600Z0T810..... | CAP ASSY., OIL FILLER |

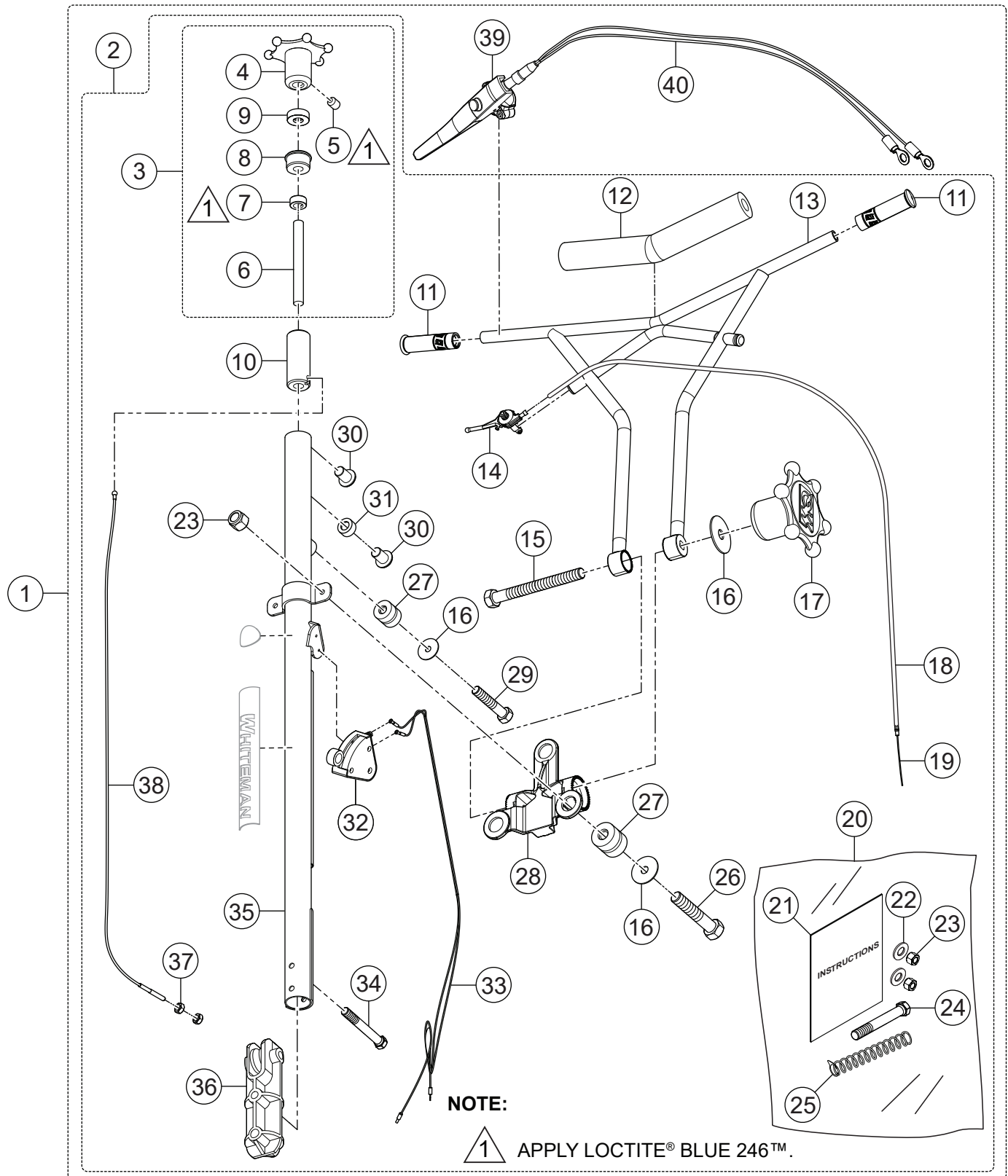
NAMEPLATE AND DECALS ASSY.



NAMEPLATE AND DECALS ASSY.

| NO. | PART NO. | PART NAME | QTY. | REMARKS |
|------------|-----------------|---|-------------|------------------|
| 1 | 30651 | DECAL KIT, J AND B FINISHERS..... | 1..... | INCLUDESITEMSW/# |
| 2# | 23810 | ISO DECAL, INHALATION HAZARD, 2.00" DIA. | 1 | |
| 3# | 38707 | DECAL, ISO PROP 65 | 1 | |
| 4# | 23699 | ISO DECAL, READ MANUAL, 2.00" DIA. | 1 | |
| 5# | 23700 | ISO DECAL, LIFTING/CRUSH, 2.4" X 2.0" | 1 | |
| 6# | 30538 | DECAL, FLAG DESIGNED AND ASSEMBLED IN USA | 1 | |
| 7# | 32210 | DECAL, BLADES PANS OPTIONS | 1 | |
| 8# | 36099 | ISO DECAL, PROTECTIVE CLOTHING, 3.50" X 1.13" | 1 | |
| 9# | 23701 | ISO DECAL, ASK FOR TRAINING, 2.00" DIA. | 1 | |
| 10 | 23803-108 | ISO DECAL, GUARANTEED SOUND 108 DB(A) | 1 | |
| 11 | 13811 | DECAL, SERIAL PLATE | 1 | |
| 12 | 4014 | SCREW, 2-3/16 P-K TYPE U-DRIVE | 2 | |
| 13# | 22070 | DECAL, MQ WHITEMAN POWER TROWEL 3.78" DIA. | 1 | |
| 14 | 24454 | DECAL, NO EXPOSED BLADE | 3 | |
| 15# | 23704 | ISO DECAL, GUARD WARNING 2.00" DIA. | 1 | |
| 16# | 23698 | ISO DECAL, ROTATING BLADE HAZARD, 2.00" DIA. | 1 | |
| 17 | 32344 | DECAL KIT, WBT HANDLES..... | 1..... | INCLUDESITEMSW/% |
| 18% | 1492 | DECAL, CUSTOM, 2-1/2" CHROME, WHITEMAN | 1 | |
| 19% | 20527 | DECAL, WARNING, QUICK-PITCH WARNING | 1..... | QUICK PITCH ONLY |
| 20% | 12405 | DECAL, QUICK-PITCH HANDLE INSERT | 2..... | QUICK PITCH ONLY |
| 21% | 20526 | DECAL, WARNING, QUICK-PITCH LATCH WARNING | 1..... | QUICK PITCH ONLY |
| 22% | 1735 | DECAL, PRE-LOAD | 1..... | QUICK PITCH ONLY |
| 23% | 2942 | DECAL, MQ WHITEMAN 13" WHITE | 1 | |
| 24% | 23804 | DECAL, ISO, DO NOT DISASSEMBLE, CYLINDER | 1..... | QUICK PITCH ONLY |

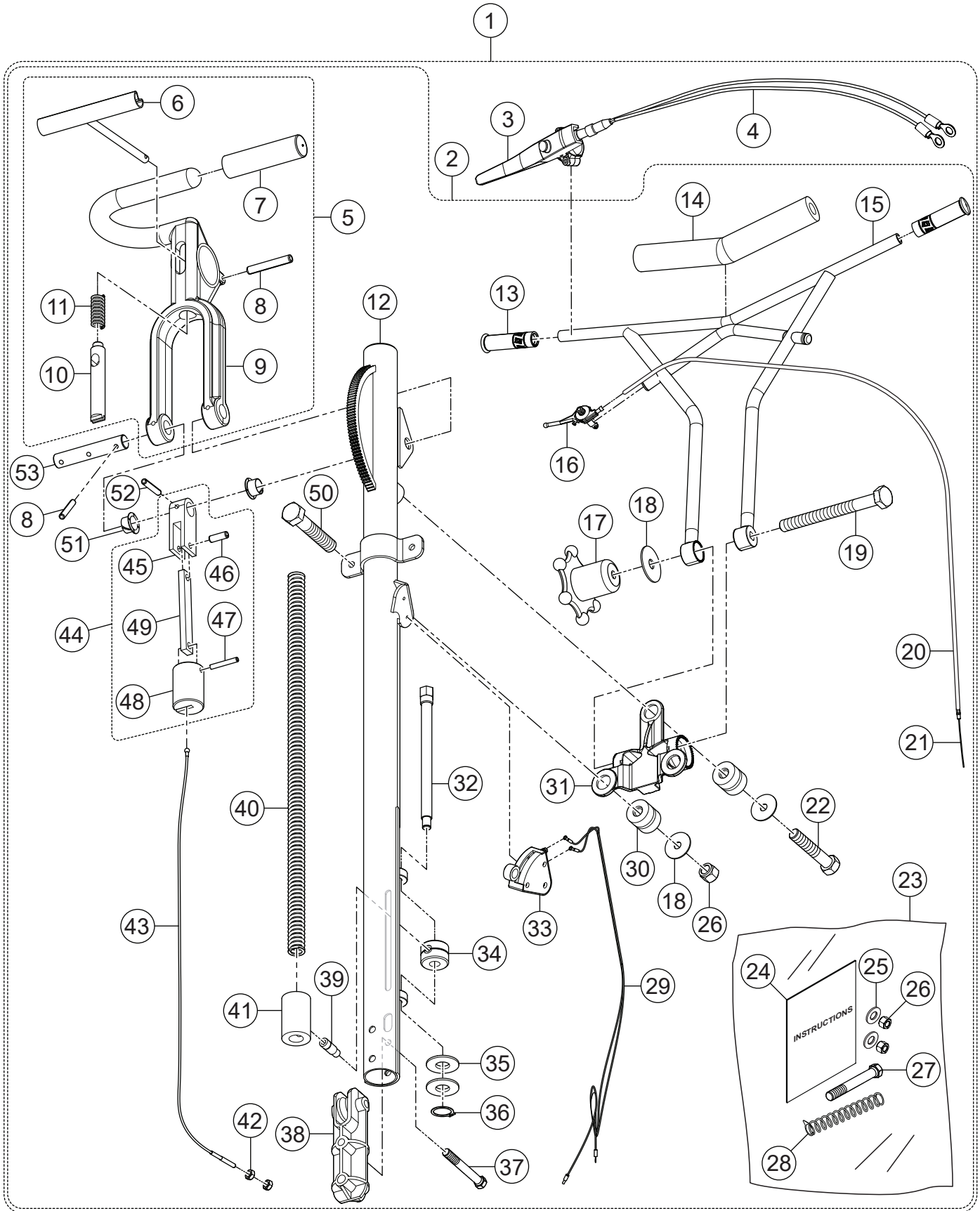
STANDARD HANDLE ASSY.



STANDARD HANDLE ASSY.

| NO. | PART NO. | PART NAME | QTY. | REMARKS |
|--------|----------|---|--------|--------------------|
| 1 | SXHP | HANDLE ASSY., STD. VIBE CONTROL OP PRESENCE | 1..... | INCLUDES ITEMS W/% |
| 2% | SXH | HANDLE ASSY., STD. VIBE CONTROL | 1..... | INCLUDES ITEMS W/@ |
| 3% @ | 20819 | HAND WHEEL ASSY., PITCH CONTROL | 1..... | INCLUDES ITEMS W/# |
| 4% @ # | 20817 | WHEEL, HAND J-B HANDLES | 1 | |
| 5% @ # | 0122 C | SCREW, SHS 3/8-16 X 1/2" | 1 | |
| 6% @ # | 1478 | SHAFT, TROWEL CONTROL | 1 | |
| 7% @ # | 3615 | COLLAR, SET 3/4" ID | 1 | |
| 8% @ # | 20282 | BEARING, TROWEL CONTROL | 1 | |
| 9% @ # | 0281 | BEARING, THRUST, NICE 607 | 1 | |
| 10% @ | 20287 | SLIDE BLOCK, TROWEL CONTROL | 1 | |
| 11% @ | 22762 | GRIP, HANDLE, 0.875" | 2 | |
| 12% @ | 22166 | COVER, VIBE CONTROL HANDLE PAD | 1 | |
| 13% @ | 22055 | HANDLE W/A, VIBRATION CONTROL, PAINTED | 1 | |
| 14% @ | 21171 | THROTTLE, BICYCLE FINISHER HANDLES | 1 | |
| 15% @ | 22167 | SCREW, HHC 3/8-16 X 6.5" GRADE 5 | 1 | |
| 16% @ | 3233 | WASHER, FENDER 3/8 X 1-1/2" | 4 | |
| 17% @ | 20439 | WHEEL ASSY., HAND | 1 | |
| 18% @ | 21173 | HOUSING, MAGURA THROTTLE CABLES | 1 | |
| 19% @ | 21172 | CABLE, THROTTLE 68" | 1 | |
| 20% @ | 22100 | KIT, VIBE CONTROL HANDLE INSTALLATION | 1 | |
| 21% @ | 20485 | INSTRUCTION, TH WBT CAB HKUP | 1 | |
| 22% @ | 10136 | WASHER, FLAT SAE 3/8" | 2 | |
| 23% @ | 10133 | NUT, NYLOC 3/8-16 | 4 | |
| 24% @ | 1493 | SCREW, HHC 3/8-16 X 3.25" | 1 | |
| 25% @ | 21746 | SPRING, PRIMARY THROTTLE RETURN | 1 | |
| 26% @ | 1665 | SCREW, HHC 3/8-16 X 2" | 2 | |
| 27% @ | 22059 | ISOLATOR, VIBRATION | 3 | |
| 28% @ | 22206 | CHASSIS, CAST VIBRATION ISOLATOR | 1 | |
| 29% @ | 9154 | SCREW, HHC 3/8-16 X 1-3/4" | 1 | |
| 30% @ | 0786 | SCREW, BHC 1/4-20 X 3/8" NYL PATCH, NP | 2 | |
| 31% @ | 0786 A | SPACER, SLIDE BLOCK GUIDE, .360 X 17/64 X 1/8L | 1 | |
| 32% @ | 20856 | SWITCH ASSY., KILL | 1 | |
| 33% @ | 21953 | SWITCH HARNESS, CENTRIFUGAL | 1 | |
| 34% @ | 21017 | SCREW, HHC 3/8-16 X 3.25" FULL THRD GR5 | 1 | |
| 35% @ | 22095 | HANDLE, STOW FIN VIBE CONTROL | 1 | |
| 36% @ | 20280 | BLOCK, PITCH CONTROL | 1 | |
| 37% @ | 1116 | NUT, BRASS JAM 5/16-18 | 2 | |
| 38% @ | 20285 | CABLE, CONTROL | 1 | |
| 39% | 21912 | OPERATOR PRESENCE HANDLE, MAGURA 90.633 | 1 | |
| 40% | 21957 | HARNESS, PRESENCE SWITCH, 32.5" LONG | 1 | |

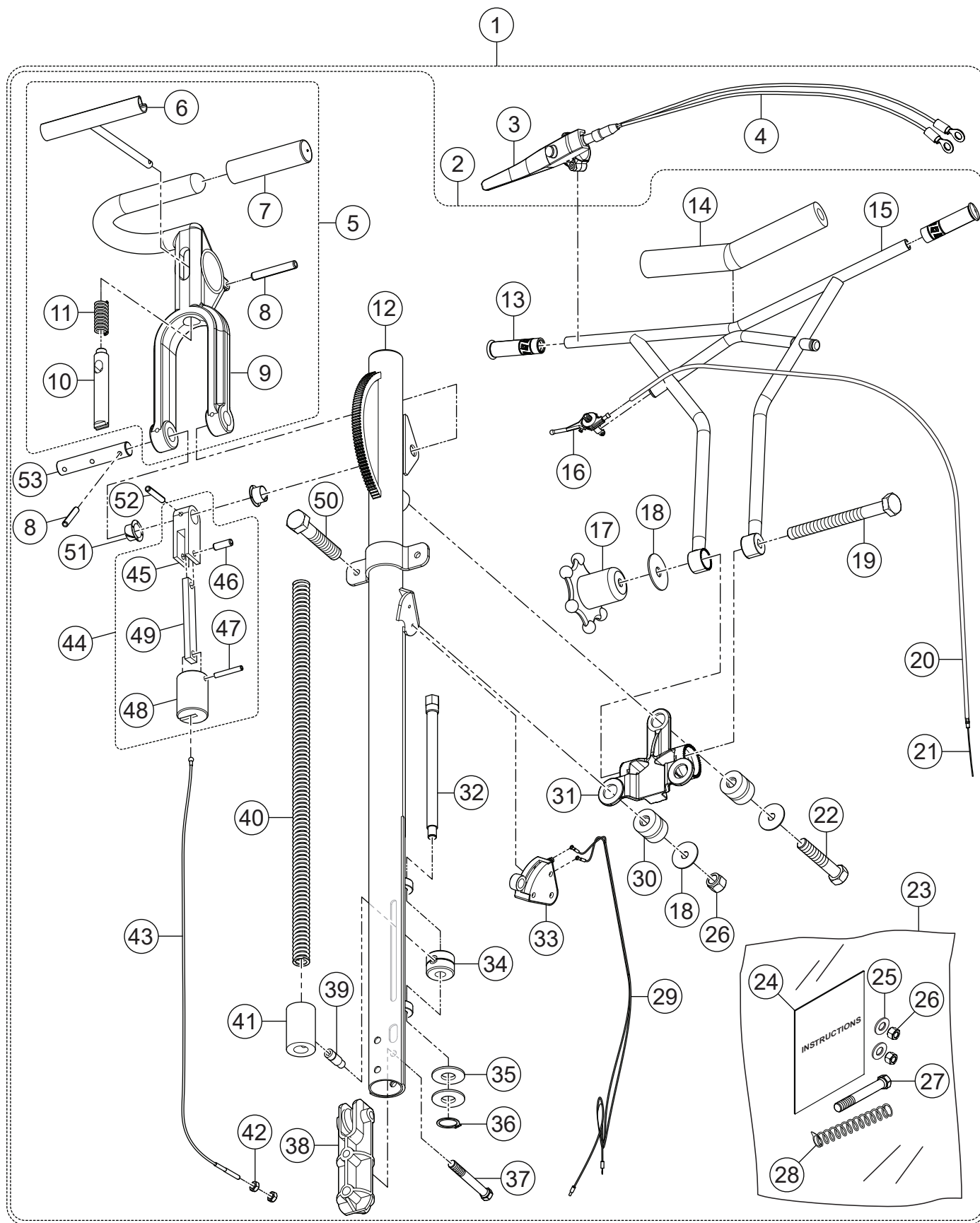
QUICK-PITCH™ HANDLE ASSY.



QUICK-PITCH™ HANDLE ASSY.

| NO. | PART NO. | PART NAME | QTY. | REMARKS |
|--------|----------|---|--------|---------------------|
| 1 | QXHP | HANDLE ASSY., QP VIBE CONTROL OP PRESENCE..... | 1..... | INCLUDES ITEMS W/@ |
| 2@ | QXH | HANDLE ASSY., HD QUICK PITCH VIBE CONTROL | 1..... | INCLUDES ITEMS W/# |
| 3@ | 21912 | OPERATOR PRESENCE HANDLE KIT | 1 | |
| 4@ | 21957 | HARNESS, PRESENCE SWITCH, 32.5" LONG | 1 | |
| 5@# | 20390 | TRIGGER, QP ASSEMBLY..... | 1..... | INCLUDES ITEMS W/\$ |
| 6@#\$ | 1746 | TRIGGER, QP | 1 | |
| 7@#\$ | 1724 | GRIP, HANDLE | 1 | |
| 8@#\$ | 1729 | PIN, SLOTTED SPRING, 3/16 X 1-1/4" | 3 | |
| 9@#\$ | 20389 | HANDLE, QP | 1 | |
| 10@#\$ | 20437 | PIN, QP LATCH | 1 | |
| 11@#\$ | 1706 | SPRING, COMPRESSION | 1 | |
| 12@# | 22060 | MAIN HANDLE, QUICK PITCH VIBE CONTROL | 1 | |
| 13@# | 22762 | GRIP, HANDLE, 0.875 W/ .63 HOLE | 2 | |
| 14@# | 22166 | COVER, VIBE CONTROL HANDLE PAD | 1 | |
| 15@# | 22055 | HANDLE, VIBRATION CONTROL | 1 | |
| 16@# | 22732 | THROTTLE LEVER ASSY. | 1 | |
| 17@# | 20439 | WHEEL ASSY., HAND | 1 | |
| 18@# | 3233 | WASHER, FENDER, 1.5" OD X 3/8" ID | 4 | |
| 19@# | 22167 | SCREW, HHC 3/8-16 X 6.5" GRADE 5 | 1 | |
| 20@# | 21173 | HOUSING, MAGURA THROTTLE CABLES | 1 | |
| 21@# | 21172 | CABLE, THROTTLE 68" | 1 | |
| 22@# | 9154 | SCREW, HHC 3/8-16 X 1-3/4" | 1 | |
| 23@# | 22100 | KIT, VIBE CONTROL HANDLE INSTALLATION | 1..... | INCLUDES ITEMS W/% |
| 24@#% | 20485 | INSTRUCTION, THROT CAB HKUP | 1 | |
| 25@#% | 10136 | WASHER, FLAT SAE 3/8" | 2 | |
| 26@#% | 10133 | NUT, NYLOC 3/8-16 | 4 | |
| 27@#% | 1493 | SCREW, HHC 3/8-16 X 3.25" | 1 | |
| 28@#% | 21746 | SPRING, PRIMARY THROTTLE RETURN | 1 | |
| 29@# | 21953 | HARNESS, PRESENCE SWITCH, 43.25" LONG | 1 | |
| 30@# | 22059 | ISOLATOR, VIBRATION | 3 | |
| 31@# | 22206 | CHASSIS, CAST VIBRATION ISOLATOR | 1 | |
| 32@# | 1717 | SCREW, QP TRIM ADJUSTMENT | 1 | |
| 33@# | 0856 | SWITCH ASSY., KILL | 1 | |
| 34@# | 1718 | NUT, QP TRIM CNTL ADJUSTMENT | 1 | |
| 35@# | 1733 | WASHER, 1/2" X 1/32" | 2 | |
| 36@# | 1737 | SNAP RING, EXTERNAL, 0.5" DIA. | 1 | |
| 37@# | 21017 | SCREW, HHC 3/8-16 X 3.25" FULL THRD GR5 | 1 | |
| 38@# | 20280 | BLOCK, PITCH CONTROL | 1 | |
| 39@# | 1732 | PIN, ADJUSTMENT, QP | 1 | |

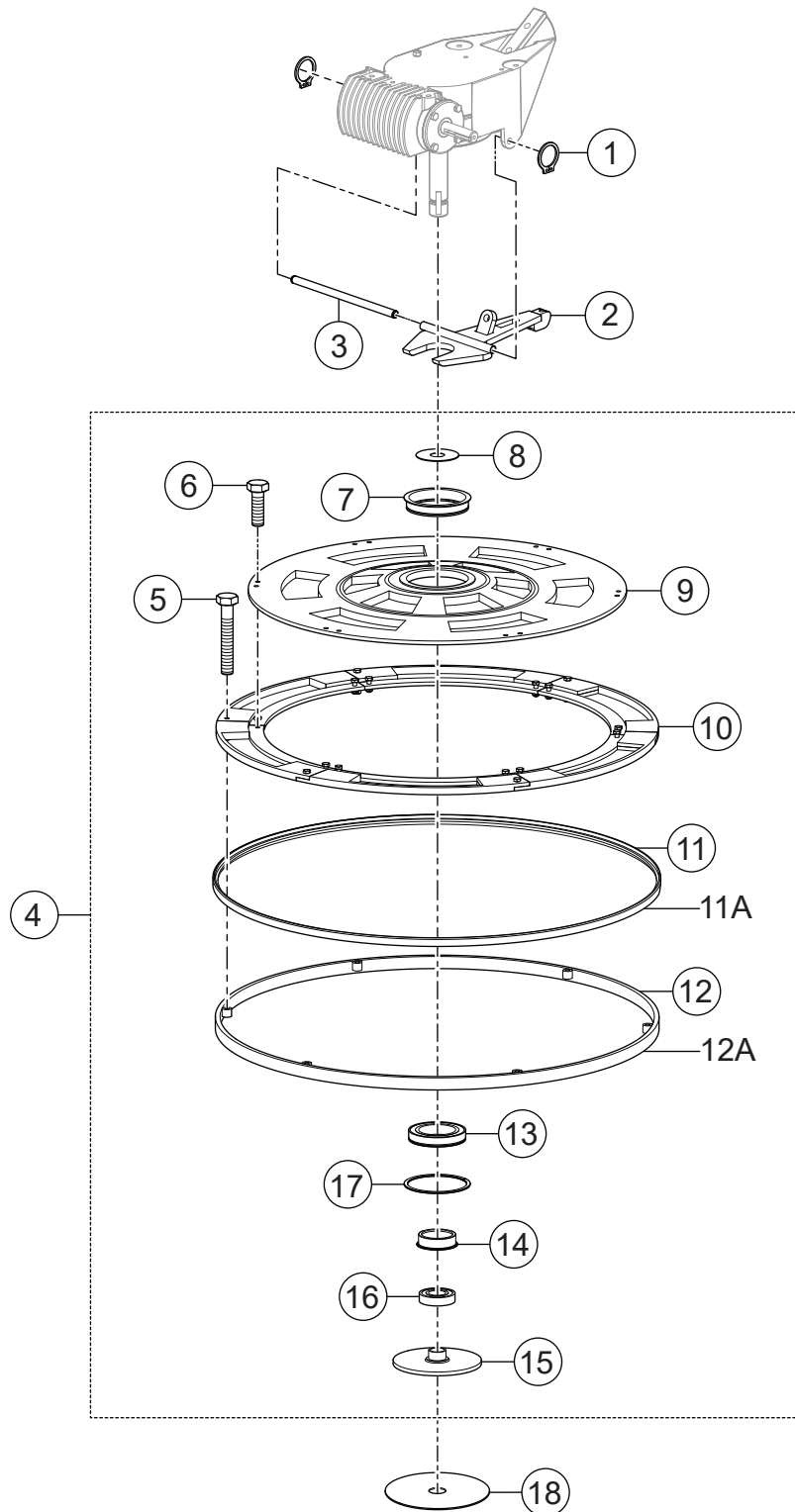
QUICK-PITCH™ HANDLE ASSY. (CONTINUED)



QUICK-PITCH™ HANDLE ASSY. (CONTINUED)

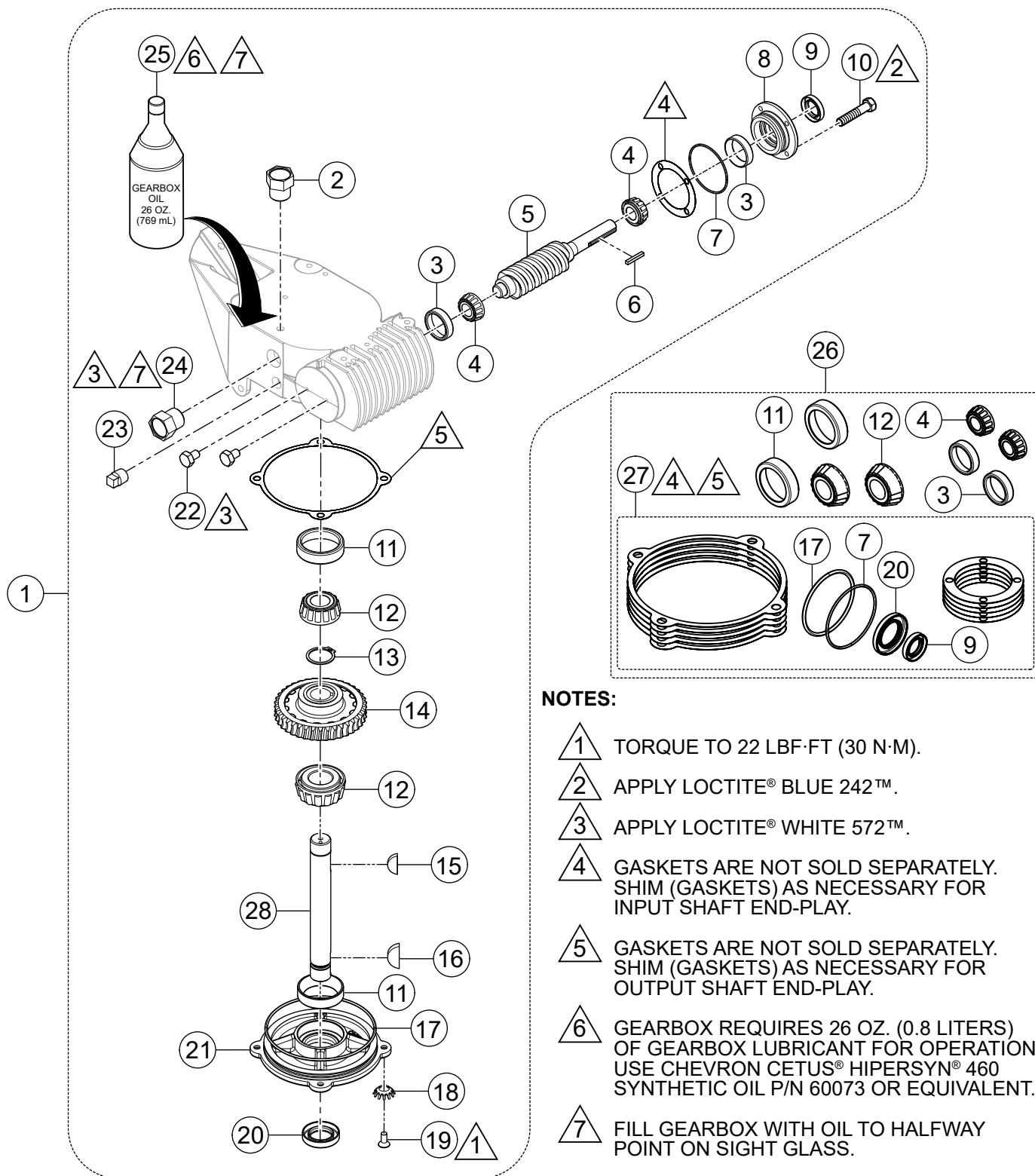
| | | | | |
|-------|-------|--------------------------|---|--------------------|
| 40@# | 1715 | QP SPRING CENTER BALANCE | 1 | |
| 41@# | 20270 | QP ADJUSTMENT BLOCK | 1 | |
| 42@# | 1116 | NUT, BRASS JAM 5/16-18 | 2 | |
| 43@# | 20297 | CABLE, CONTROL | 1 | |
| 44@# | 20293 | LINKAGE QP CONTROL..... | 1 | INCLUDES ITEMS W/& |
| 45@#& | 20443 | ARM, SLIDE CONTROL | 1 | |
| 46@#& | 1731 | PIN, ROLL 1/4" X 3/4" | 1 | |
| 47@#& | 20276 | PIN, ROLL 1/4" X 1-3/4" | 1 | |
| 48@#& | 20269 | BLOCK, CABLE SLIDE | 1 | |
| 49@#& | 1709 | QP DOGBONE | 1 | |
| 50@# | 1665 | SCREW, HHC 3/8-16 X 2" | 2 | |
| 51@# | 1719 | BUSHING, PIVOT PLATE | 2 | |
| 52@# | 4568 | PIN, ROLL 3/16 X 1" | 1 | |
| 53@# | 1711 | SHAFT, CONTROL QP | 1 | |

GUARD RING ASSY.



GUARD RING ASSY.

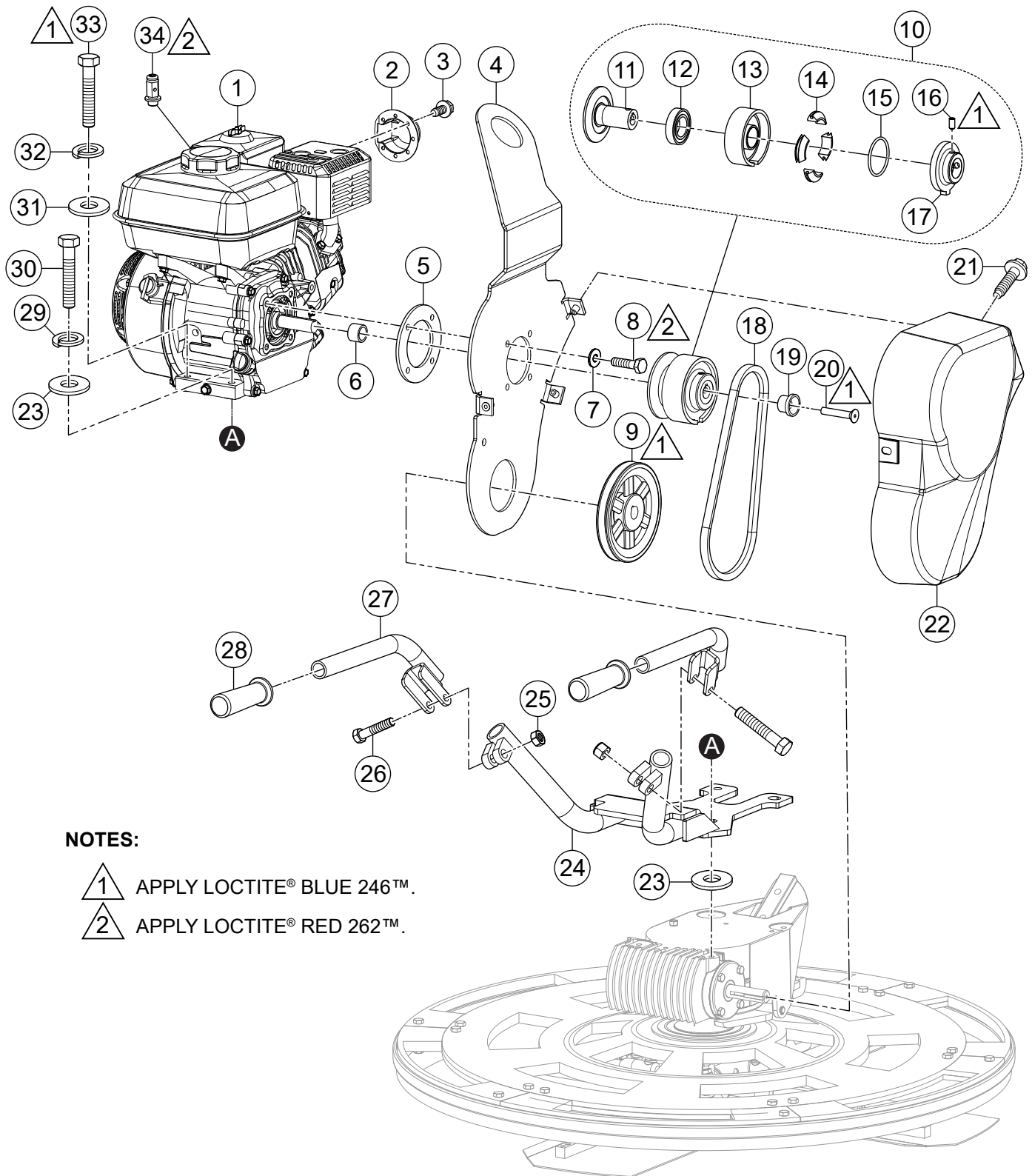
| <u>NO.</u> | <u>PART NO.</u> | <u>PART NAME</u> | <u>QTY.</u> | <u>REMARKS</u> |
|------------|-----------------|--|-------------|--------------------|
| 1 | 20802 | RING, SNAP, TRUARC | 2 | |
| 2 | 30624 | YOKE ASSY. | 1 | |
| 3 | 20801 | PIN, YOKE | 1 | |
| 4 | 30640 | KIT, GUARD RING | 1..... | INCLUDES ITEMS W/@ |
| 5@ | 9182 | SCREW, HHC M8-1.25 X 45MM | 6 | |
| 6@ | 1605 | SCREW, HHC M8-1.25 X 25MM | 12 | |
| 7@ | 24532 | BEARING HOLDER | 1 | |
| 8@ | 24386 | WEAR PLATE, UPPER | 1 | |
| 9@ | 24389 | GUARD RING, 30" | 1 | |
| 10@ | 24390 | GUARD RING SEGMENT, 36" | 6 | |
| 11@ | 24394 | BUMPER, 36" | 1 | |
| 11A@ | 24393 | BUMPER, 30" | 1 | |
| 12@ | 24392 | RING, BUMPER, 36" | 1 | |
| 12A@ | 24391 | RING, BUMPER, 30" | 1 | |
| 13@ | 24064 | BEARING, 2.9375" I.D. 4.527" O.D. W/O RING | 1 | |
| 14@ | 21434 | SLEEVE, PITCH | 1 | |
| 15@ | 24424 | COLLAR, THRUST | 1 | |
| 16@ | 10607 | BEARING, THRUST | 1 | |
| 17@ | 24533 | RING, BEARING RETAINER | 1 | |
| 18 | 10639 | WEAR PLATE, THRUST COLLAR | 1 | |



GEARBOX ASSY.

| <u>NO.</u> | <u>PART NO.</u> | <u>PART NAME</u> | <u>QTY.</u> | <u>REMARKS</u> |
|------------|-----------------|--|-------------|--------------------|
| 1 | 30634 | GEARBOX ASSY. | 1..... | INCLUDES ITEMS W/@ |
| 2@ | 21218 | VENT, AIR, GEARBOX | 1 | |
| 3@# | 20466 | BEARING, CUP TIMKEN LM11910 | 4 | |
| 4@# | 20465 | BEARING, CONE TIMKEN LM11949 | 4 | |
| 5@ | 1851 | WORM "B" INPUT SHAFT | 1 | |
| 6@ | 0627 | KEY, 3/16 X 1-1/4" | 1 | |
| 7@#% | 20395 | O-RING, 139 BUNA-N | 1 | |
| 8@ | 12876 | FLANGE, INPUT SHAFT | 1 | |
| 9@#% | 0753 | SEAL, OIL, DUAL LIP, 1.250 X .750 X .250 | 1 | |
| 10@ | 0131 A | SCREW, HHC 1/4-20 X 3/4" | 4 | |
| 11@# | 20475 | BEARING, CUP TIMKEN M86610 | 4 | |
| 12@# | 20474 | BEARING, CONE TIMKEN M86647 | 4 | |
| 13@ | 1138 | RING, SNAP | 1 | |
| 14@ | 1140 | GEAR, WORM, COMPOSITE | 1 | |
| 15@ | 1139 | KEY, WOODRUFF #810 1/4 X 1-1/4" (#21) | 1 | |
| 16@ | 1238 | KEY, WOODRUFF #1012 5/16 X 1-1/2" (#25) | 1 | |
| 17@#% | 20396 | O-RING, SIZE-257 BUNA-N | 1 | |
| 18@ | 10235 | WASHER, LOCK 5/16" EXT. TOOTH CSINK | 4 | |
| 19@ | 20875 | SCREW, FHSC 5/16-18 X 3/4" | 4 | |
| 20@#% | 0254 | SEAL, OIL DLIP 1.125 X 1.87 X .250 | 1 | |
| 21@ | 12875 | COVER, GEARBOX | 1 | |
| 22@ | 20476 | SCREW, HHC 1/4-28 X 3/8" | 2 | |
| 23@ | 0121 A | PIPE PLUG 3/8" | 1 | |
| 24@ | 21033 | SIGHT GLASS, 3/4" NPT, STEEL, NO BALL | 1 | |
| 25@ | 60073 | OIL, GEAR, ISO GRADE 460 26 OZ. (769 ML) | 1 | |
| 26 | 21047 | KIT, BEARING/SEAL | 1..... | INCLUDES ITEMS W/# |
| 27# | 21046 | KIT, SEAL..... | 1..... | INCLUDES ITEMS W/% |
| 28@ | 30635 | SHAFT, OUTPUT Ø1.126 X 9.3 WD KEYS | 1 | |

ENGINE AND CLUTCH ASSY.

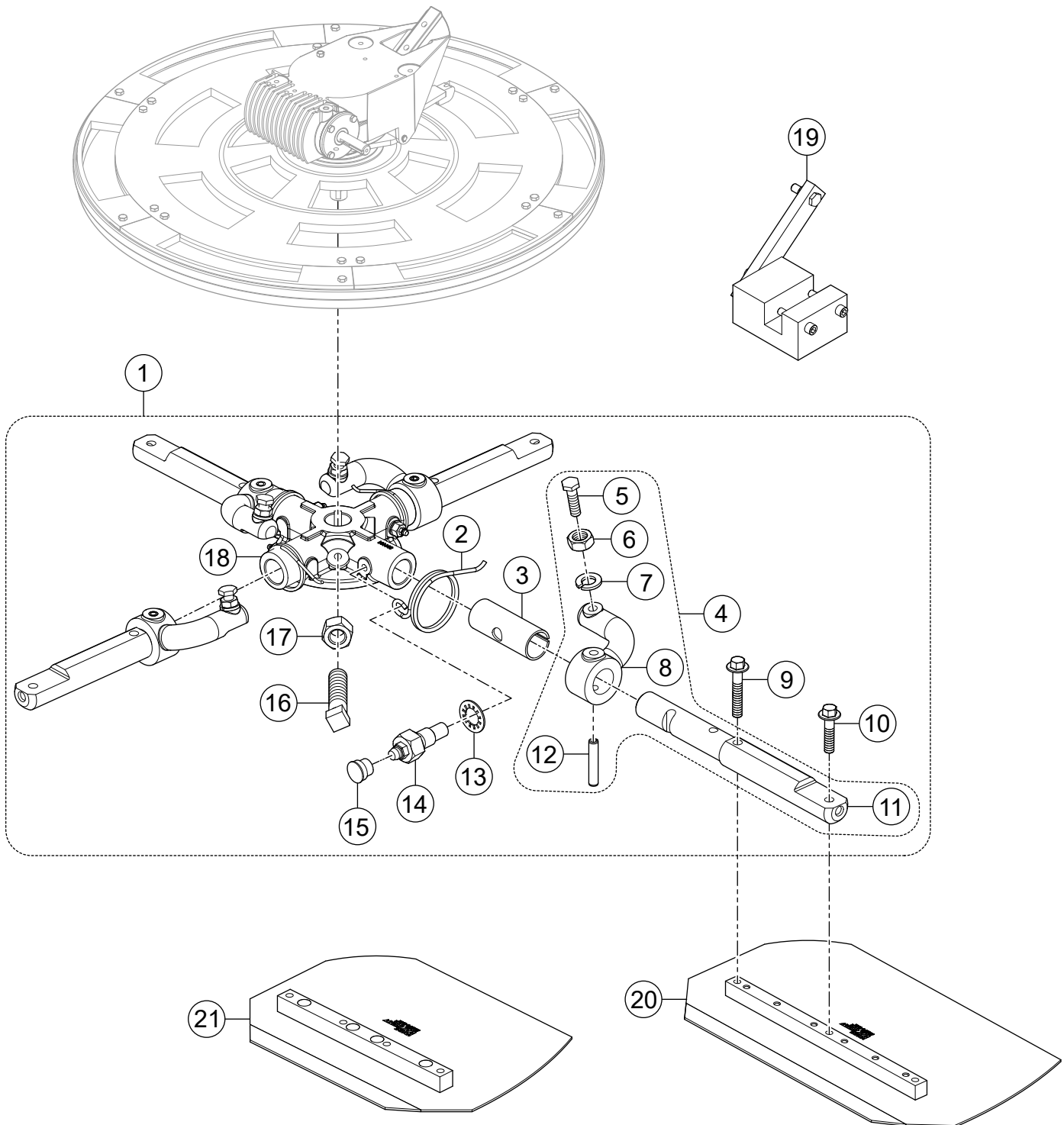


NOTES:

- 1 APPLY LOCTITE® BLUE 246™.
- 2 APPLY LOCTITE® RED 262™.

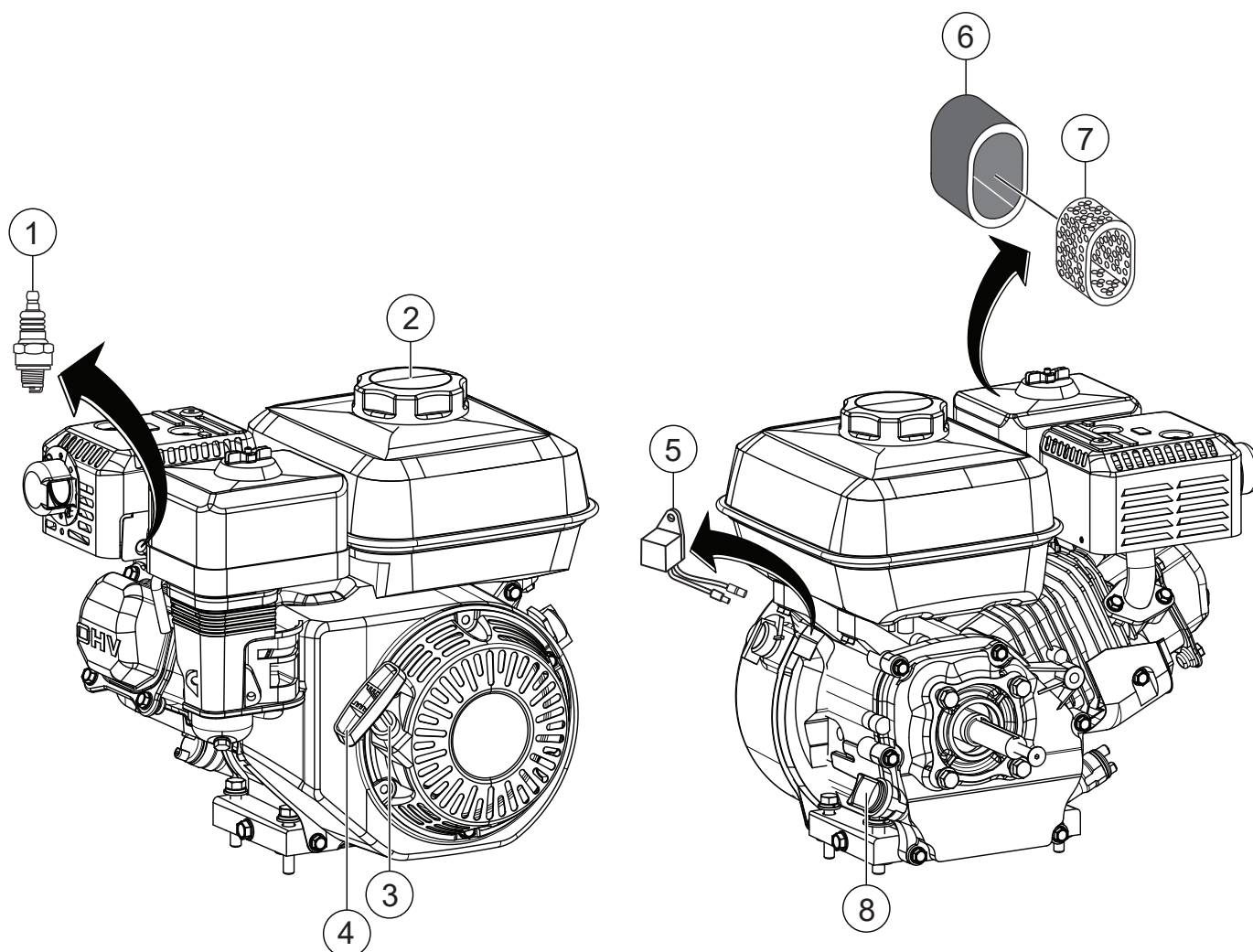
ENGINE CLUTCH ASSY.

| <u>NO.</u> | <u>PART NO.</u> | <u>PART NAME</u> | <u>QTY.</u> | <u>REMARKS</u> |
|------------|-----------------|--------------------------------------|-------------|--------------------|
| 1 | 22901 | ENGINE, HONDA GX160 (4.8 HP) | 1 | |
| 2 | 1834 | DEFLECTOR, HONDA 5 HP EXHAUST | 1 | |
| 3 | 1273 | SCREW, HHF, #8-32 X 3/8", TYPE F, ZP | 2 | |
| 4 | 30633 | LIFTING BAIL | 1 | |
| 5 | 21915 | SPACER, LIFTING BAIL | 1 | |
| 6 | 21679 | SPACER 1" X .78 X 69 L | 1 | |
| 7 | 933241 | WASHER, FLAT SAE 5/16" GRD 9 YZ | 4 | |
| 8 | 10229 | SCREW, HHC 5/16-24 X 1" | 4 | |
| 9 | 21994 | PULLEY, AK59 X 3/4" BORE | 1 | |
| 10 | 0255 | CLUTCH ASSEMBLY, 3/4" CENTRIFUGAL | 1 | INCLUDES ITEMS W/@ |
| 11@ | 21307 | CLUTCH SPINDLE, 3/4" BORE | 1 | |
| 12@ | 0456 | BEARING, SHIELDED 6007 ZZ E | 1 | |
| 13@ | 0251 | DRUM, CENTRIFUGAL CLUTCH | 1 | |
| 14@ | B1766 | WEIGHT-AUTOMATIC CLUTCH | 4 | |
| 15@ | 0855 | SPRING, CLUTCH .156 X 5.375 X .025 | 1 | |
| 16@ | 1868 | SCREW, SHS 3/8-24 X 3/4", NP | 1 | |
| 17@ | 0253 | CLUTCH PLATE | 1 | |
| 18 | 30648 | BELT, A26 | 1 | |
| 19 | 1406 | END PLUG, CLUTCH | 1 | |
| 20 | 21678 | SCREW, FHSC 5/16-24 X 1-3/4" | 1 | |
| 21 | 30119 | SCREW, 1/4-20 X 7/8" IND HEX, DOG PT | 3 | |
| 22 | 30344 | BELT GUARD, FRICTION CLUTCH | 1 | |
| 23 | 10136 | WASHER, FLAT SAE 3/8" | 2 | |
| 24 | 30632 | HANDLE, LIFT | 1 | |
| 25 | 10133 | NUT, NYLOC 3/8-16 | 2 | |
| 26 | 1665 | SCREW, HHC 3/8-16 X 2" | 2 | |
| 27 | 30645 | HANDLE, LIFT, UPPER | 2 | |
| 28 | 15081 | GRIP, 1" I.D. X 4.5 | 2 | |
| 29 | 0166 A | WASHER, LOCK, 3/8" MED. | 1 | |
| 30 | 9154 | SCREW, HHC 3/8-16 X 1-3/4" | 1 | |
| 31 | 0300 B | WASHER, FLAT SAE 5/16" | 3 | |
| 32 | 0161 C | WASHER, LOCK 5/16" MED. | 3 | |
| 33 | 1207 | SCREW, HHC 5/16-18 X 1-3/4" | 3 | |
| 34 | 20845 | SWIVEL, ASSY. THROTTLE CABLE | 1 | |



SPIDER ASSY.

| <u>NO.</u> | <u>PART NO.</u> | <u>PART NAME</u> | <u>QTY.</u> | <u>REMARKS</u> |
|------------|-----------------|--|-------------|--------------------|
| 1 | 30636 | SPIDER W/ ARMS ASSY..... | 1..... | INCLUDES ITEMS W/@ |
| 2@ | 1316 | SPRING, LS ARM RETURN | 4 | |
| 3@ | 1157 A | BUSHING, TROWEL ARM | 4 | |
| 4@ | 30638 | TROWEL ARM ASSY..... | 4..... | INCLUDES ITEMS W/# |
| 5@# | 0164 B | SCREW, TROWEL ADJUSTMENT 3/8-16 | 4 | |
| 6@# | 1876 | NUT, HEX JAM 3/8-16 CLASS 2B | 4 | |
| 7@# | 0166 A | WASHER, LOCK, 3/8" MED. | 4 | |
| 8@# | 1163 | LEVER, TROWEL ARM, RIGHT HAND | 4 | |
| 9@ | 21906 | SCREW, HHFS 5/16-18 X 1-1/2" GR 5 | 4 | |
| 10@ | 42036 | SCREW, HHFS 5/16-18 X 1-1/4" GR 5 | 4 | |
| 11@# | 30639 | ARM, TROWEL, 2826 MODIFIED | 4 | |
| 12@# | 4164 | PIN, SLOTTED SPRING, 5/16" X 1-3/4" NP | 4 | |
| 13@ | 1875 | WASHER, INT. SHKP, 3/8" | 4 | |
| 14@ | 1322 | SCREW ASSY., TROWEL ARM RETAINING | 4 | |
| 15@ | 1162 A | CAP, GREASE ZERK, #2 YELLOW | 4 | |
| 16@ | 12097 | SCREW, SQHS 3/8-16 X 1-3/4" CONE | 1 | |
| 17@ | 1456 | NUT, HEX FINISH 3/8-16 | 1 | |
| 18@ | 30642 | SPIDER PLATE, 1-1/8" SHAFT 4 BLD | 1 | |
| 19 | 1817 | TROWEL ARM ADJUSTMENT TOOL | 1 | |
| 20 | 30699 | BLADES, TROWEL COMBO 8" X 14" | 4 | |
| 21 | 30698 | COMBO EDGER BLADE, 30" WBT 8" X 10.5" | 4 | |



ENGINE SERVICE PARTS

| <u>NO.</u> | <u>PART NO.</u> | <u>PART NAME</u> | <u>QTY.</u> | <u>REMARKS</u> |
|------------|-----------------|-------------------------------|-------------|----------------|
| 1 | 9807956846 | SPARK PLUG, BPR6ES | 1 | |
| 2 | 17620Z4H900 | CAP, FUEL TANK, CHROME PLATED | 1 | |
| 3 | 28462ZH8003 | ROPE, RECOIL STARTER | 1 | |
| 4 | 28461Z4M305 | KNOB, RECOIL STARTER | 1 | |
| 5 | 34150ZH7023 | ALERT UNIT, OIL | 1 | |
| 6 | 17218ZE1507 | FILTER, OUTER FOAM | 1 | |
| 7 | 17210ZE1517 | ELEMENT, AIR CLEANER | 1 | |
| 8 | 15600Z0T810 | CAP ASSY., OIL FILLER | 1 | |

PARTS MANUAL

HERE'S HOW TO GET HELP

PLEASE HAVE THE MODEL AND SERIAL
NUMBER ON-HAND WHEN CALLING

UNITED STATES

Multiquip Inc.

(310) 537- 3700
6141 Katella Avenue Suite 200
Cypress, CA 90630
E-MAIL: mq@multiquip.com
WEBSITE: www.multiquip.com

CANADA

Multiquip

(450) 625-2244
4110 Industriel Boul.
Laval, Quebec, Canada H7L 6V3
E-MAIL: infocanada@multiquip.com

UNITED KINGDOM

Multiquip (UK) Limited Head Office

0161 339 2223
Unit 2, Northpoint Industrial Estate,
Globe Lane,
Dukinfield, Cheshire SK16 4UJ
E-MAIL: sales@multiquip.co.uk

© COPYRIGHT 2019, MULTIQUIP INC.

Multiquip Inc, the MQ logo are registered trademarks of Multiquip Inc. and may not be used, reproduced, or altered without written permission. All other trademarks are the property of their respective owners and used with permission.

This manual MUST accompany the equipment at all times. This manual is considered a permanent part of the equipment and should remain with the unit if resold.

The information and specifications included in this publication were in effect at the time of approval for printing. Illustrations, descriptions, references and technical data contained in this manual are for guidance only and may not be considered as binding. Multiquip Inc. reserves the right to discontinue or change specifications, design or the information published in this publication at any time without notice and without incurring any obligations.

Your Local Dealer is:



PN: 13413