

DIAMOND
PRODUCTS
REAR PIVOT
SAW
PARTS LIST
MODEL
CC6160D

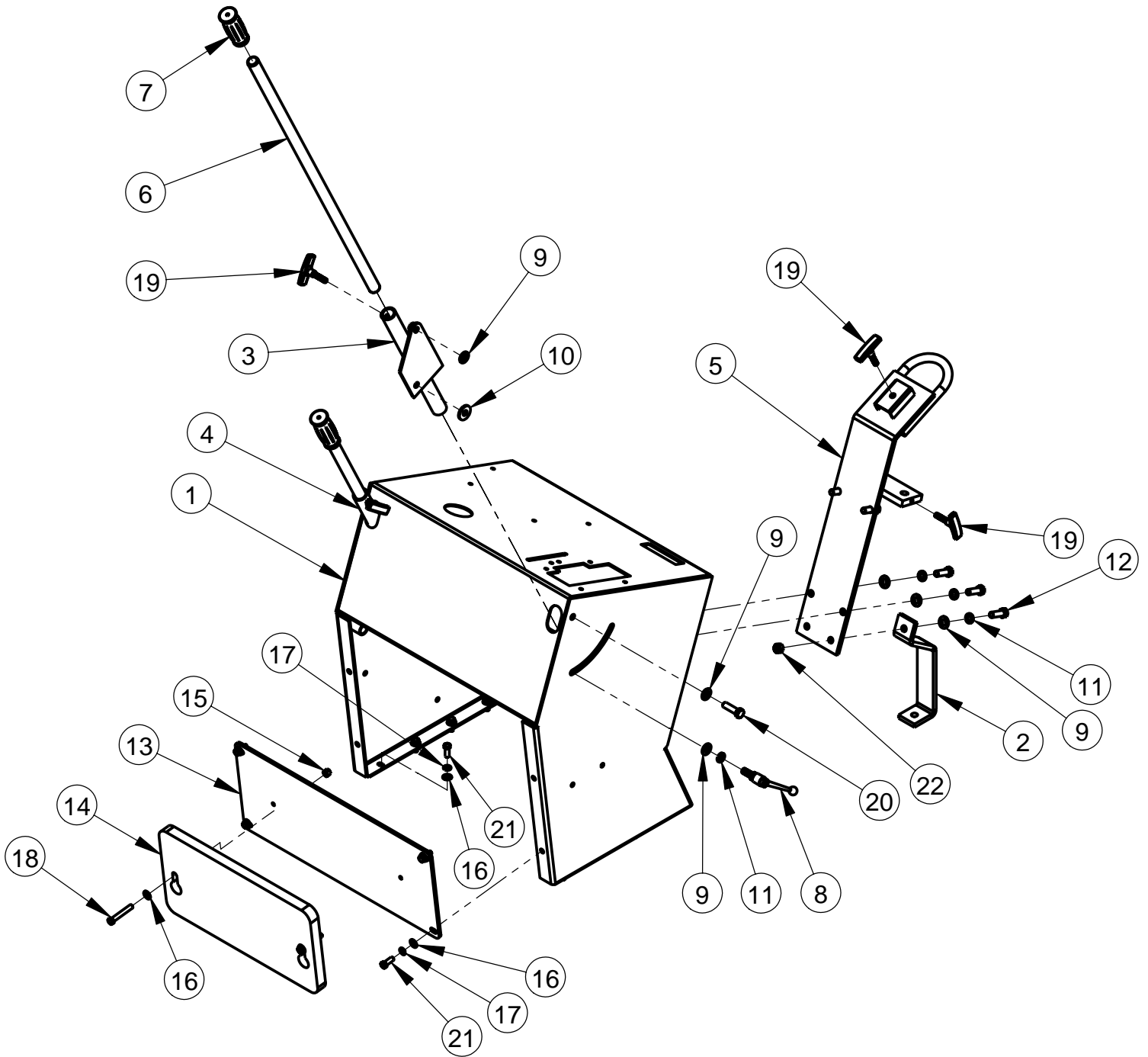
(September 2005)

Intentionally Blank

Table of Contents

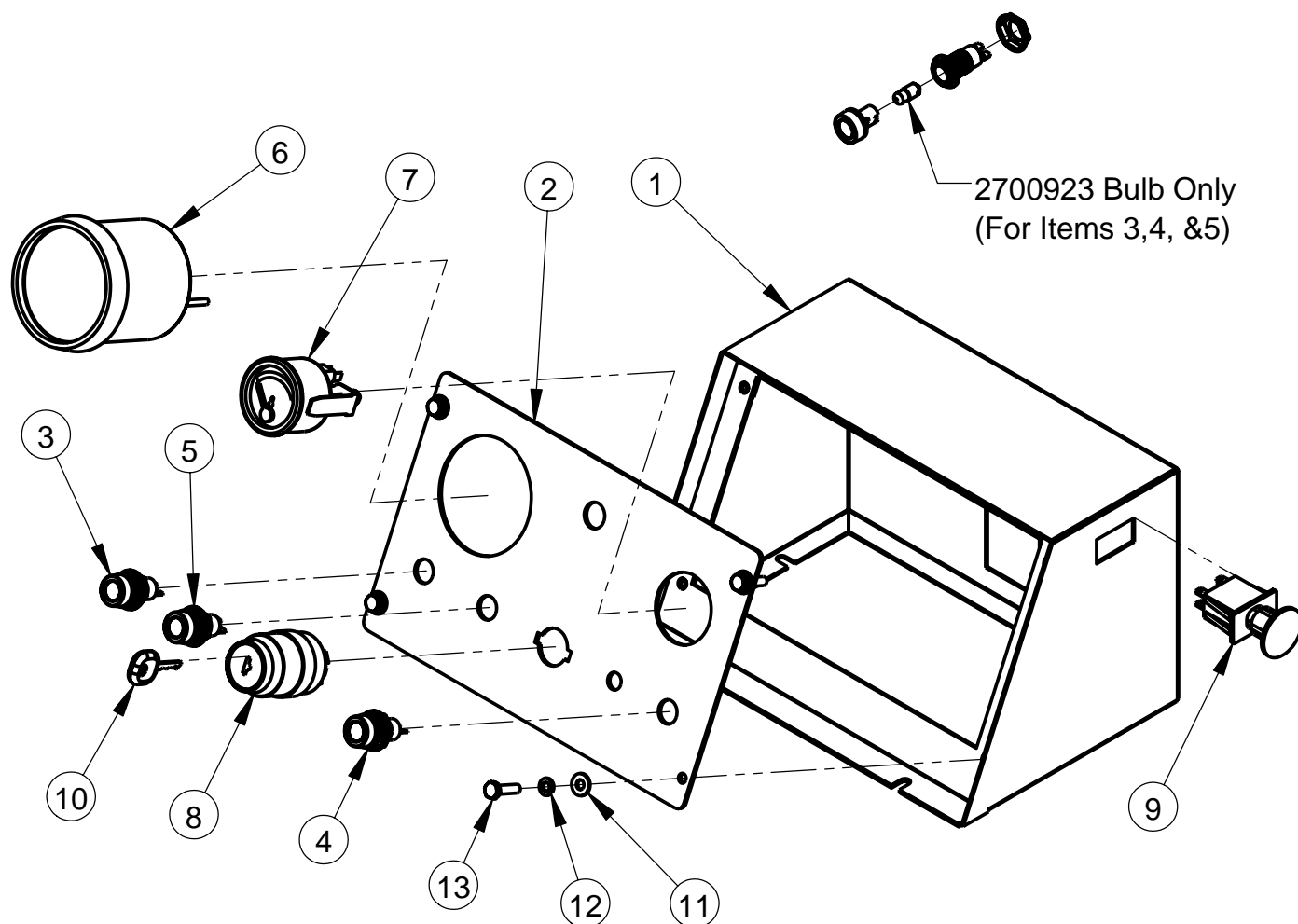
1. Frame Upright Assembly	4
2. Instrument Panel Assembly	5
3. Speed Control Assembly.....	6
4. Control Lever Assembly	7
5. Control Grip Assembly	7
6. Fuel Tank Assembly	8
7. Battery Assembly.....	9
8. Hydraulic Pump Assembly	10
9. Depth Indicator Assembly	11
10. Depth Stop Assembly	12
11. Water Supply Assembly	13
12. CC6160D Frame Components Assembly	14-15
13. Differential Assembly	16-17
14. Differential Driveshaft Assembly	18-19
15. Front Axle Assembly	20
16. Front Wheel Assembly	21
17. Hydraulic Cylinder Assembly	22
18. Positraction Engagement Assembly	23
19. Blade Shaft Assembly	24
20. Throttle Cable Assembly	25
21. Engine Assembly	26-27
22. PTO Assembly	28
23. Swing Cover Assembly.....	29
24. 48" Blade Guard Assembly	30-31
25. Front Pointer Assembly (Optional).....	32
26. Decal Group	33
27. Wiring Diagram	34-35
28. Warranty	36

Frame Upright Assembly #6010900



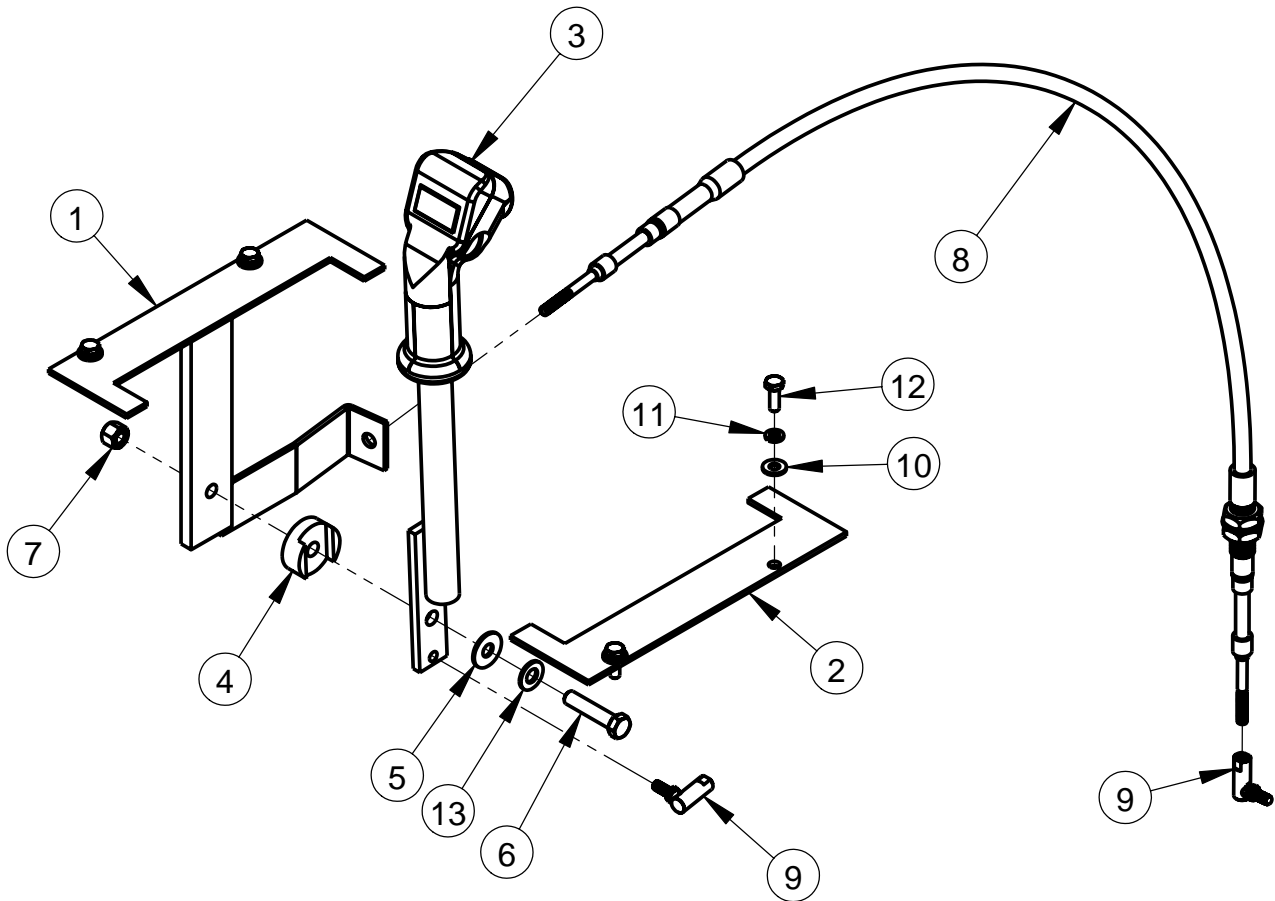
ITEM	PART NO.	QTY.	DESCRIPTION	ITEM	PART NO.	QTY.	DESCRIPTION
1	6011271	1	Frame Upright Weldment	12	2900499	5	Cap Screw, Hex Hd., 1/2-13 x 1-1/2"
2	6015032	1	Lift Frame Brace	13	6011276	1	Rear Cover
3	6011270	1	Handle Mount RH	14	6011290	1	Counterweight - Optional
4	6011269	1	Handle Mount LH	15	2900018	2	Lock Nut, 3/8-16 Nylon
5	6011272	1	Lifting Hook Weldment	16	2900014	14	Flat Washer, 3/8" SAE
6	6010014	2	Handle Bar, 36" Long	17	2900006	12	Lock Washer, 3/8" Split
7	2500636	2	Handle Grip	18	2900596	2	Cap Screw, Hex Hd., 3/8-16 x 2-1/2"
8	2502506	2	Lever-Adjustable 1/2 x 2	19	2400199	4	Locking Knob 3/8 Stud
9	2900058	11	Flat Washer, 1/2" SAE	20	2900139	2	Cap Screw, Hex Hd., 1/2-13 x 1-3/4"
10	2900700	2	Washer-Plastic 1-3/8 x 1/2 ID	21	2900005	12	Cap Screw, Hex Hd., 3/8-16 x 1"
11	2900084	7	Lock Washer, 1/2" Split	22	2900037	1	Hex Nut, 1/2-13

Instrument Panel Assembly #6010901

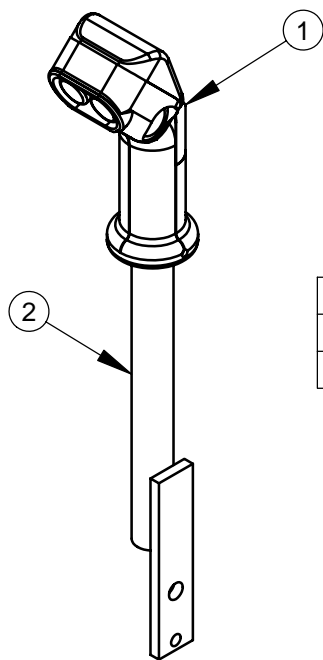


ITEM	PART NO.	QTY.	DESCRIPTION
1	6011264	1	Instrument Panel Housing
2	6011238	1	Front Panel
3	2700785	1	Alternator Light -Orange
4	2700786	1	Oil Pressure Light -Green
5	2700787	1	Oil Temperature Light - Red
6	2800526	1	Tachometer - Alternator Pick-up
7	2702333	1	Temperature Gauge
8	2700783	1	Ignition Switch
9	2800525	1	Switch-Push Button Stop
10	2701261	1	Ignition Key
11	2900009	4	Flat Washer, 1/4" SAE
12	2900024	4	Lock Washer, 1/4" Split
13	2900008	4	Cap Screw, Hex Hd., 1/4-20 x 1"

Speed Control Assembly #6010913



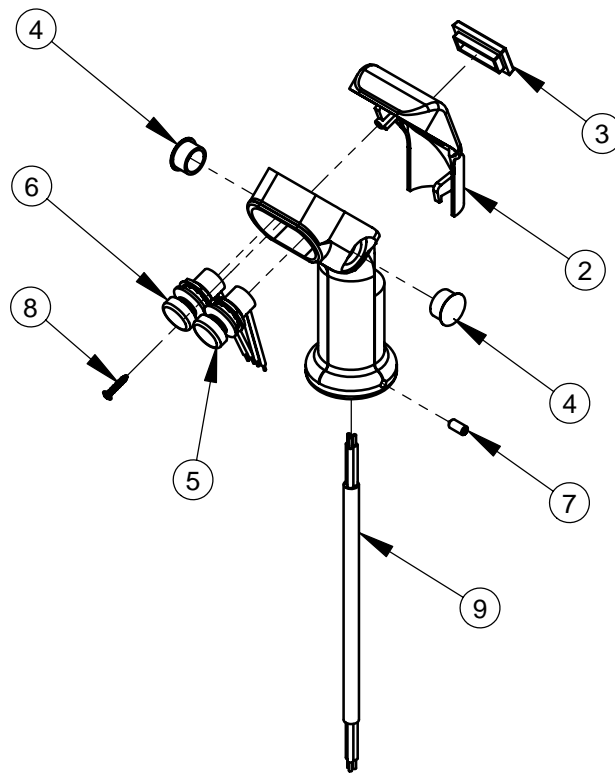
ITEM	QTY.	PART NO.	DESCRIPTION
1	1	6010931	Control Lever Mount Assembly
2	1	6010930	Control Lever Plate RH
3	1	6010929	Control Lever Assembly
4	1	6010055	Friction Spacer
5	1	2900153	Friction Washer, 3/8"
6	1	2900047	Cap Screw, Hex Hd., 3/8-16 x 1-3/4"
7	1	2900018	Lock Nut, 3/8-16 Nylon
8	1	2502131	Transmission Control Cable
9	2	2502132	Ball Joint, 1/4-28
10	4	2900009	Flat Washer, 1/4" SAE
11	4	2900024	Lock Washer, 1/4" Split
12	4	2900144	Cap Screw, Hex Hd., 1/4-20 x 3/4"
13	1	2900014	Flat Washer, 3/8" SAE



Control Lever Assembly #6010929

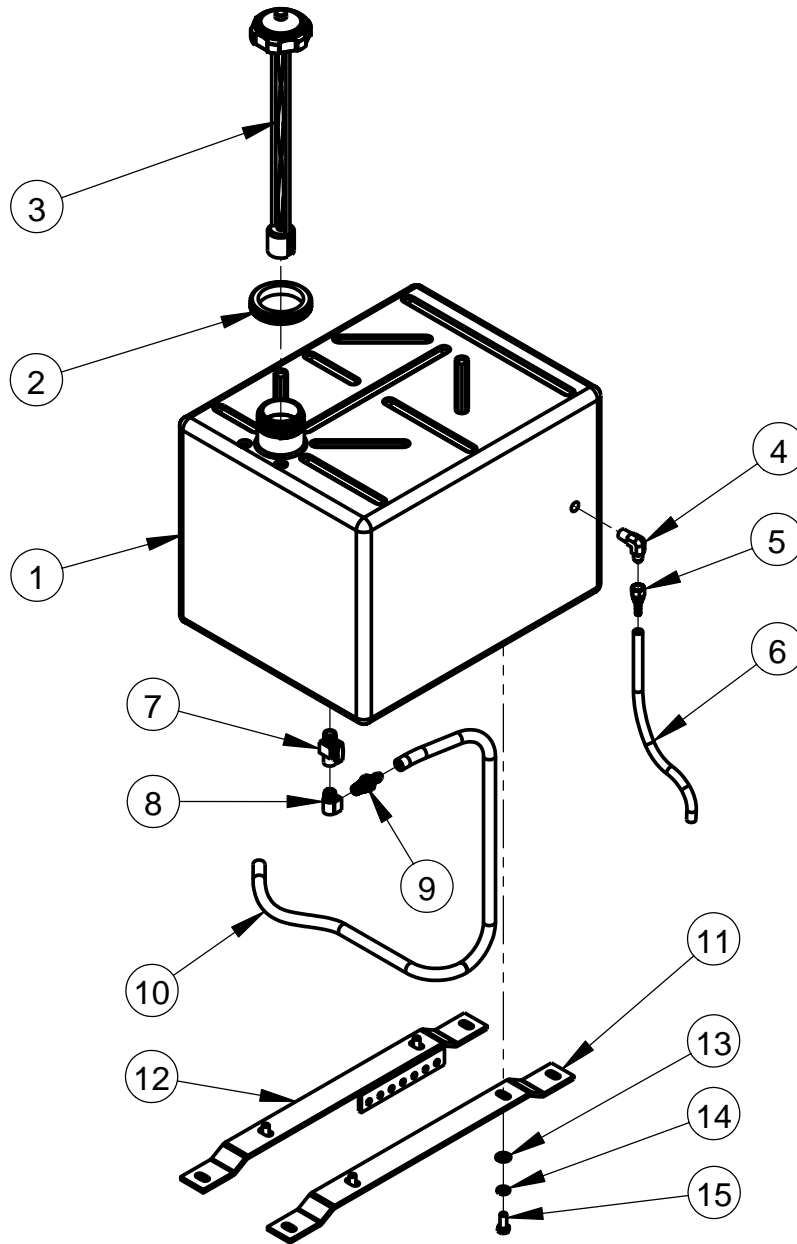
ITEM	PART NO.	QTY.	DESCRIPTION
1	6010319	1	Control Grip Assembly
2	6010389	1	Speed Control Lever

Control Grip Assembly #6010319



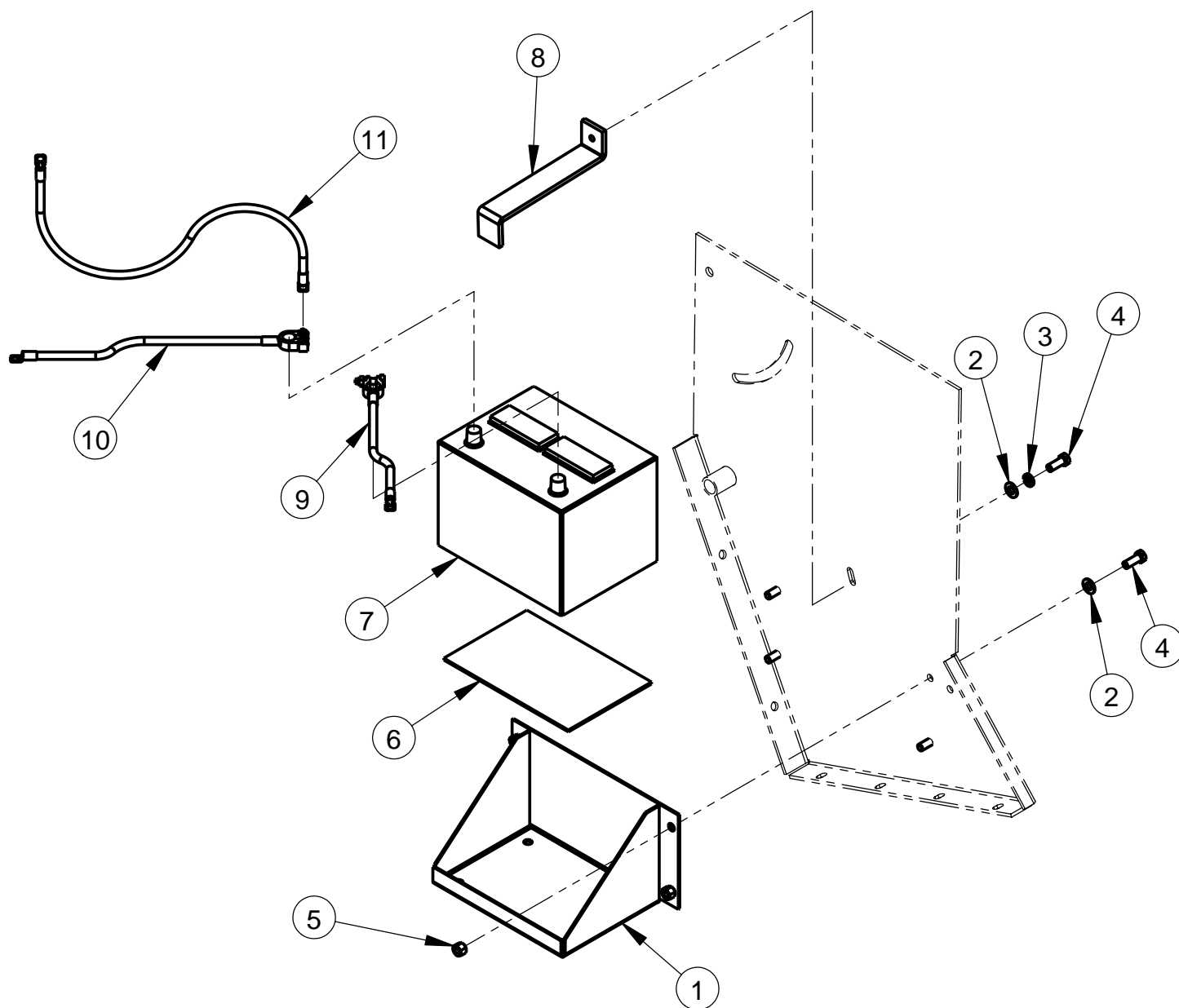
ITEM	PART NO.	QTY.	DESCRIPTION
1	2501280	1	Control Grip Body
2	2501281	1	Control Grip Cover
3	2500644	1	Plug, Rectangular
4	2500694	2	Plug, 5/8" Hole
5	2800372	1	Pushbutton Switch, Raise
6	2800373	1	Pushbutton Switch, Lower
7	2900453	1	Set Screw, Soc. Hd., M5 x 12mm
8	2900452	1	Machine Screw, Oval Hd., #4 x 5/8"
9	2800393	1	Harness, Hydraulic Pump

Fuel Tank Assembly #6010902



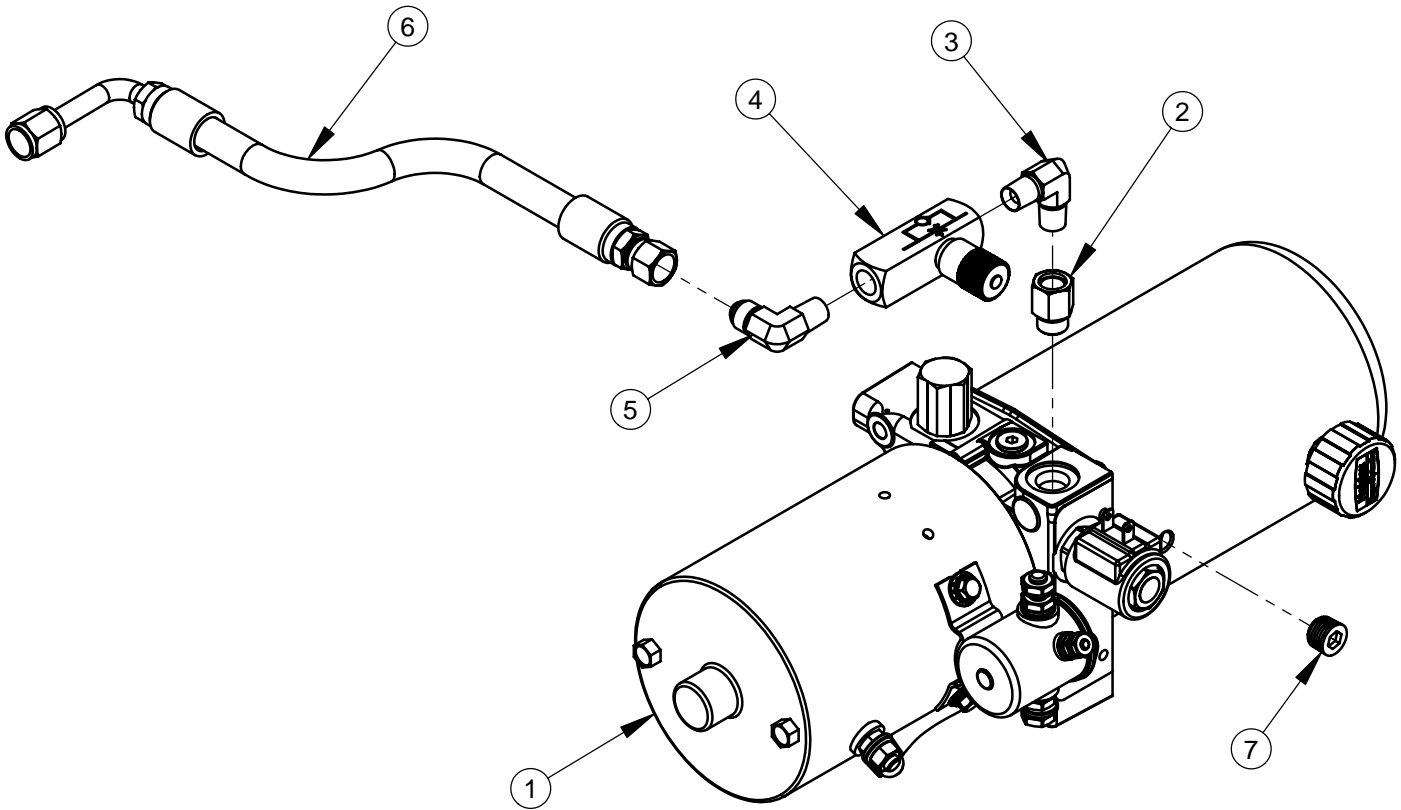
ITEM	PART NO.	QTY.	DESCRIPTION
1	2500650	1	Fuel Tank
2	2500205	1	Fuel Tank Grommet
3	2500649	1	Fuel Tank Cap
4	3200057	1	Elbow, 1/4" M. Pipe to 1/4" M. JIC
5	3200091	1	Fitting, 1/4" F. JIC to 1/4" Push Lock
6	6011188	1	Fuel Return Hose, 1/4" ID x 38"
7	3200108	1	Fuel Shut-Off Valve, 1/4"
8	3200012	1	Street Elbow, 1/4" NPT
9	3200202	1	Fitting, 1/4"M. Pipe to 5/16" Pushlock
10	6010693	1	Fuel Supply Hose, 5/16" I.D. x 30"
11	6011250	1	Fuel Tank Holder Bar
12	6011274	1	Tank Holder w/ Spring Mount
13	2900022	4	Flat Washer, 5/16" SAE
14	2900031	4	Lock Washer, 5/16" Split
15	2900019	4	Cap Screw, Hex Hd., 5/16-18 x 3/4"

Battery Assembly #6010903



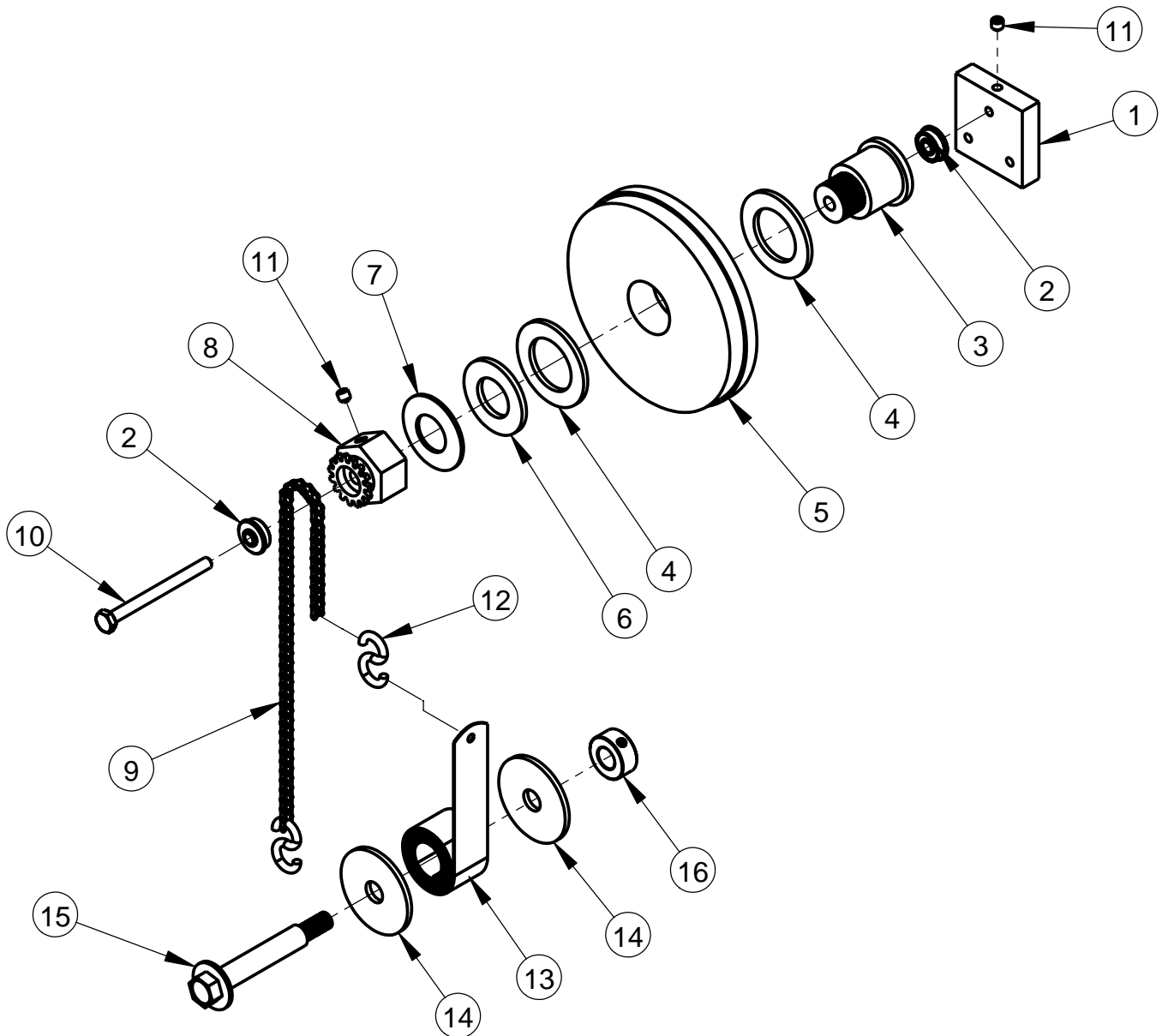
ITEM	PART NO.	QTY.	DESCRIPTION
1	6011247	1	Battery Box
2	2900014	5	Flat Washer, 3/8" SAE
3	2900006	1	Lock Washer, 3/8" Split
4	2900005	5	Cap Screw, Hex Hd., 3/8-16 x 1"
5	2900018	4	Lock Nut, 3/8-16 Nylon
6	6010442	1	Battery Pad
7	2800600	1	Battery 12 Volt
8	6011248	1	Battery Hold Down
9	2501761	1	Battery Cable, Negative
10	2501760	1	Battery Cable, Positive
11	2501764	1	Battery Cable, Positive Jumper
12	6011271	1	Frame Upright Weldment

Hydraulic Pump Assembly #6010912



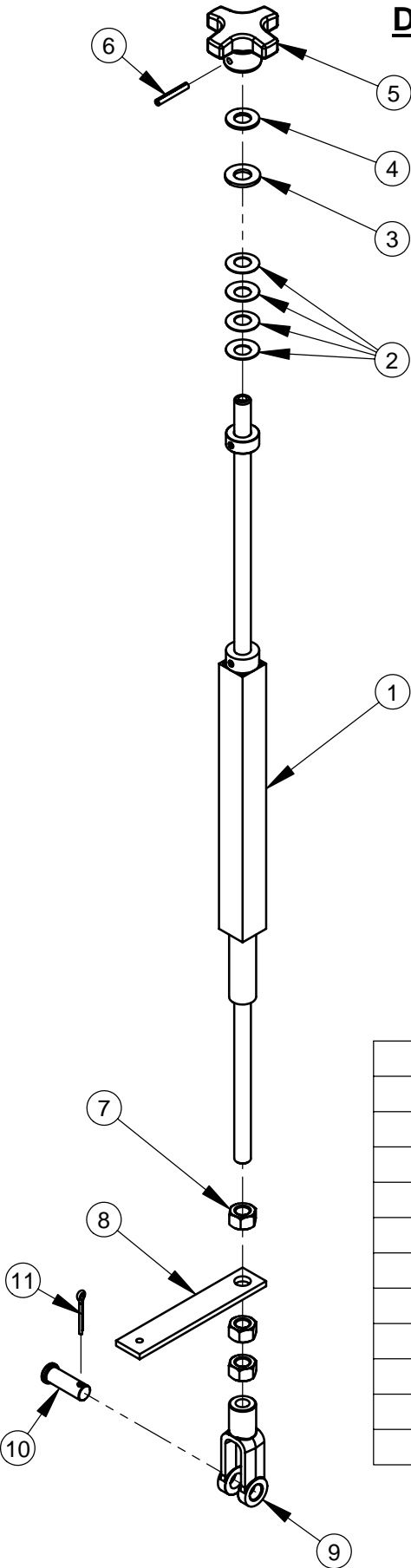
ITEM	PART NO.	QTY.	DESCRIPTION
1	2600070	1	Hydraulic Pump Unit
2	3200605	1	Fitting, 3/8" O-Ring - 1/4" F. Pipe
3	3200604	1	Fiting, 1/4" M. Pipe 90 Deg. Elbow
4	3200056	1	Flow Control Valve, 1/4" NPT
5	3200796	1	Fitting, 1/4" NPT - 3/8" JIC
6	6015015	1	Hyd Hose Assy 3/8 x 36"
7	3201096	1	Fitting, 3/8" Plug, Hex Head

Depth Indicator Assembly #6010904



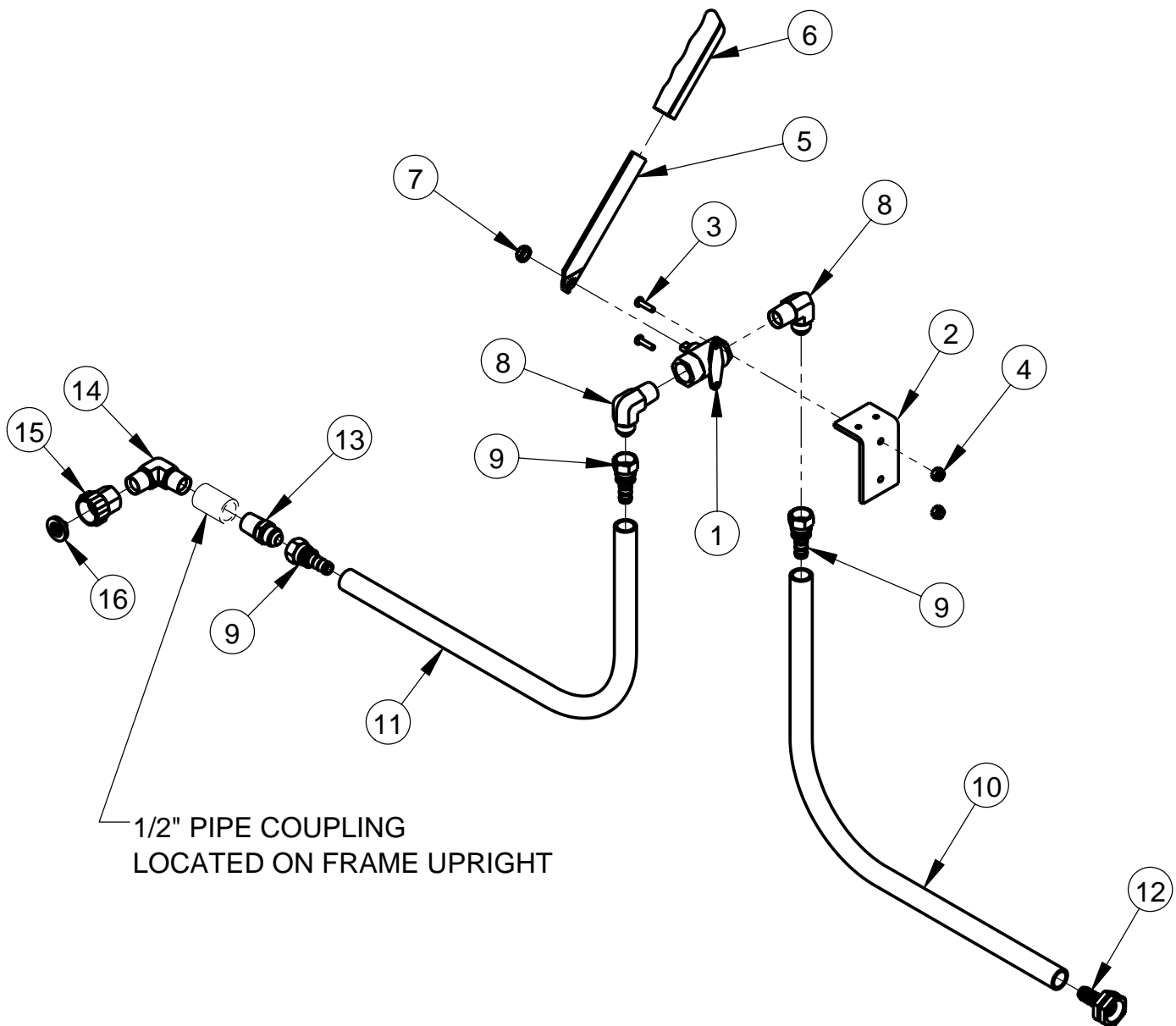
ITEM	PART NO.	QTY.	DESCRIPTION
1	6011251	1	Depth Indicator Mount
2	2503415	2	Radial Bearing , 1/4" I.D.
3	6011252	1	Depth Indicator Hub
4	1400030	2	Washer, 1-1/4" ID Plastic
5	6011254	1	Depth Indicator Wheel
6	2900425	1	Flat Washer, 7/8" SAE
7	2901012	1	Belleville Washer, 7/8"
8	6015041	1	Sprocket Assy, Depth Indicator
9	6010443	1	Chain, #35 Roller, 70 Pitch
10	2900667	1	Cap Screw, Hex Hd., 1/4-20 x 3"
11	2900056	2	Set Screw, Soc. Hd., 1/4-20 x 1/4"
12	2504010	2	S-Hook, 60 Lb Load Rated
13	2703051	1	Spring, Constant Force
14	2900966	2	Flat Washer, 1/2" x 2" x 1/8"
15	2900551	1	Wheel Bolt
16	2500007	1	Set Collar, 1/2" with Set Screw

Depth Stop Assembly #6010932



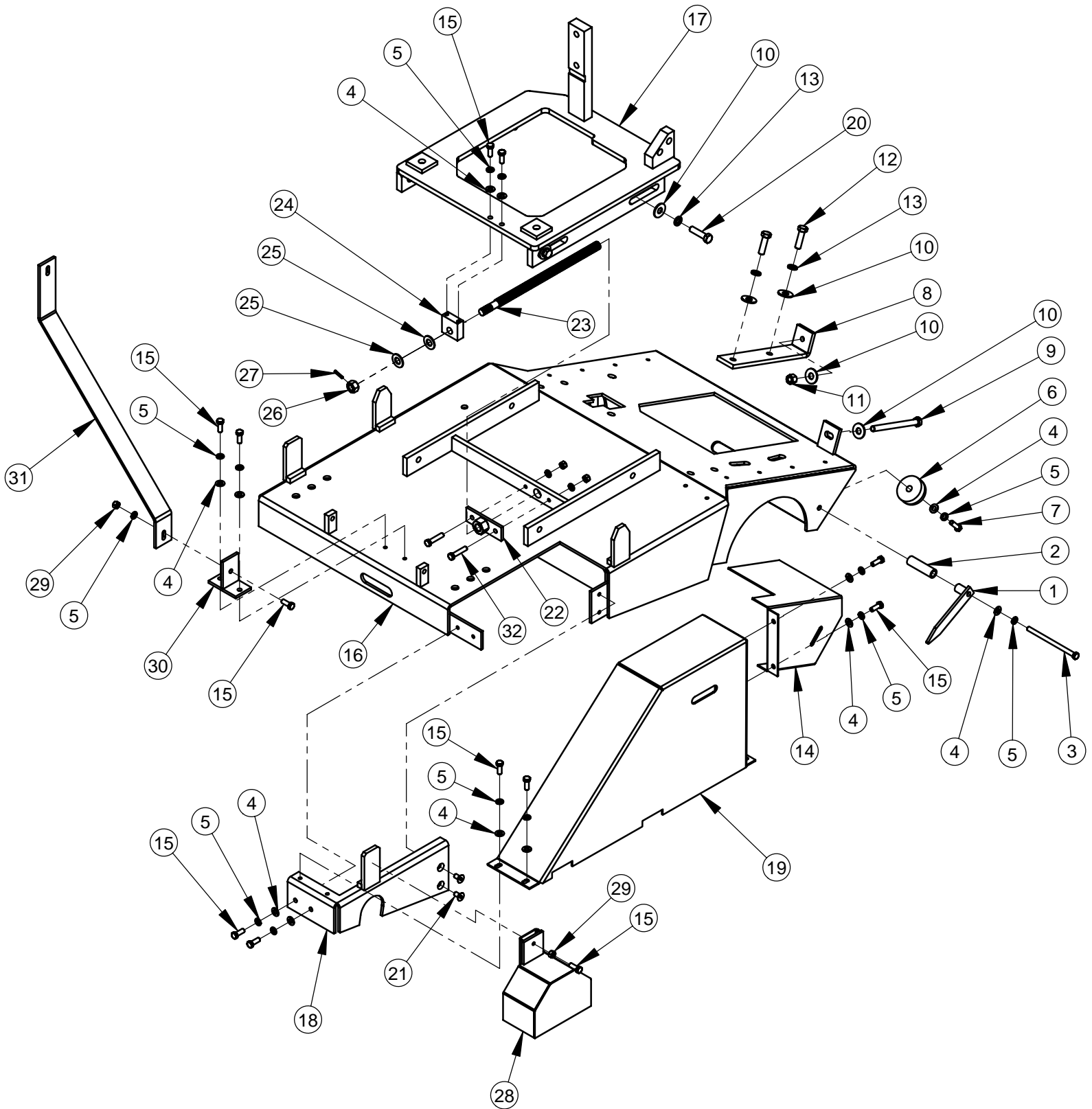
ITEM	PART NO.	QTY.	DESCRIPTION
1	6010927	1	Depth Stop Weldment, 22"
2	2900665	4	Belleville Washer, 1/2"
3	2900058	1	Flat Washer, 1/2" SAE
4	2900239	1	Friction Washer, 1/2"
5	6010095	1	Depth Stop Knob
6	2900132	1	Roll Pin, 3/16" x 1-1/4"
7	2900037	3	Hex Nut, 1/2-13
8	6011320	1	Depth Stop Cable Mount
9	2900158	1	Yoke, 1/2-13
10	2900007	1	Clevis Pin, 1/2" Dia. x 1-3/8"
11	2900004	1	Cotter Pin, 3/32" x 3/4"

Water Supply Assembly #6010905



ITEM	PART NO.	QTY.	DESCRIPTION
1	3200558	1	1/2" Water Valve-Panel Mount
2	6011257	1	Water Valve Mount
3	2900689	2	Cap Screw, Pan Hd., #10-32 x 3/4"
4	2900688	2	Lock Nut, #10-32 Nylon
5	6011256	1	Water Valve Handle
6	2500002	1	Grip for 1" Flat Bar
7	2900696	1	Jam Nut, 3/8-24
8	3201461	2	Fitting, 1/2 M JIC to 1/2 M Pipe 90 Elbow
9	3200181	3	Fitting, 1/2" F. JIC to 1/2" Pushlok
10	6015028	1	Water Hose 1/2" x 72"
11	6010162	1	Water Hose 1/2" x 24"
12	3200021	1	Fitting, 3/4" F. Garden to 1/2" Hose Barb
13	3201460	1	Fitting, 1/2" F JIC to 1/2" M Pipe
14	3200166	1	Fitting, Elbow 1/2" M Pipe 90 Deg
15	3200022	1	Fitting, 1/2" F. Pipe to 3/4" F. Garden
16	3200025	1	Hose Filter Washer

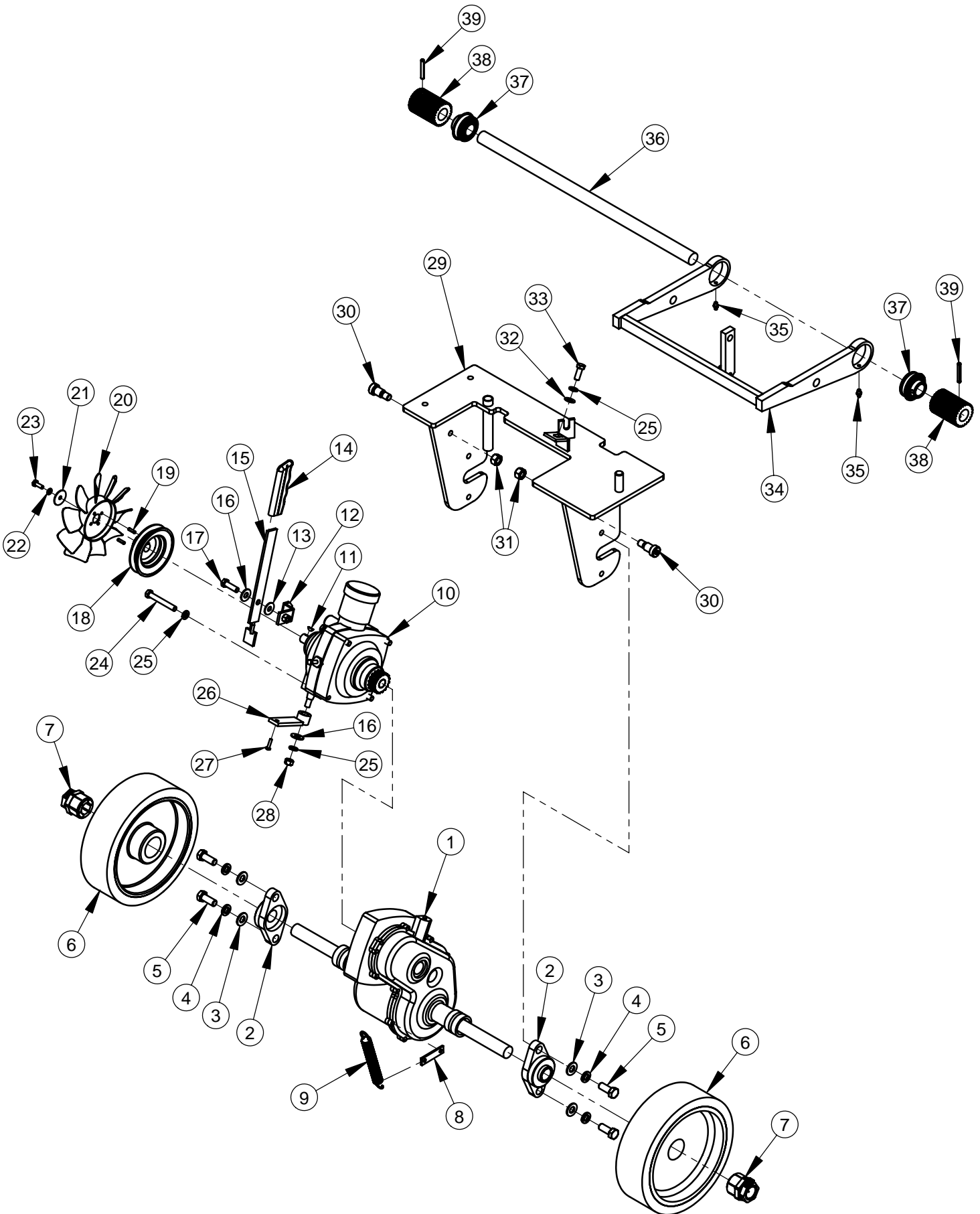
CC6160D Frame Component Assembly #6010906



CC6160D Frame Component Assembly #6010906

ITEM	PART NO.	QTY.	DESCRIPTION
1	6010022	2	Rear Pointer
2	6011255	2	Spacer, Rear Guide Pointer
3	2900692	2	Cap Screw, Hex Hd., 3/8-16 x 6"
4	2900014	14	Flat Washer, 3/8" SAE
5	2900006	17	Lock Washer, 3/8" Split
6	2501767	2	Rubber Bumper
7	2900013	2	Cap Screw, Hex Hd., 3/8-16 x 1-1/4"
8	6011246	1	Rear Tracking Adjuster
9	2900695	1	Cap Screw, Hex Hd., Full Thrd, 1/2-13 x 6"
10	2900127	8	Flat Washer, 1/2" USS
11	2900026	1	Lock Nut, 1/2-13 Nylon
12	2900139	2	Cap Screw, Hex Hd., 1/2-13 x 1-3/4"
13	2900084	6	Lock Washer, 1/2" Split
14	6011245	1	Beltguard, Hydraulic Pump
15	2900005	12	Cap Screw, Hex Hd., 3/8-16 x 1"
16	6011282	1	Base Plate Weldment 6160D
17	6011279	1	Engine Frame Weldment
18	6015033	1	Base Plate Corner
19	6011281	1	Beltguard-6160D
20	2900106	4	Cap Screw, Hex Hd., 1/2-13 x 2"
21	2900701	2	Cap Screw, Flat Socket Hd. 3/8-16 x 3/4"
22	6011280	1	Adjustment Nut Weldment
23	6011275	1	Adjustment Screw-6160D
24	6015034	1	Adjustment Block Guide
25	2900002	2	Flat Washer, 5/8" SAE
26	2900112	1	Hex Nut, 5/8-11
27	2900134	1	Roll Pin, 3/16" Dia. x 1"
28	6011261	1	Bladeshaft Guard Weldment
29	2900033	4	Hex Nut, 3/8-16
30	2504007	1	Guard Brace Mount
31	2504008	1	Blade Guard Brace
32	2900047	2	Cap Screw, Hex Hd., 3/8-16 x 1-3/4"

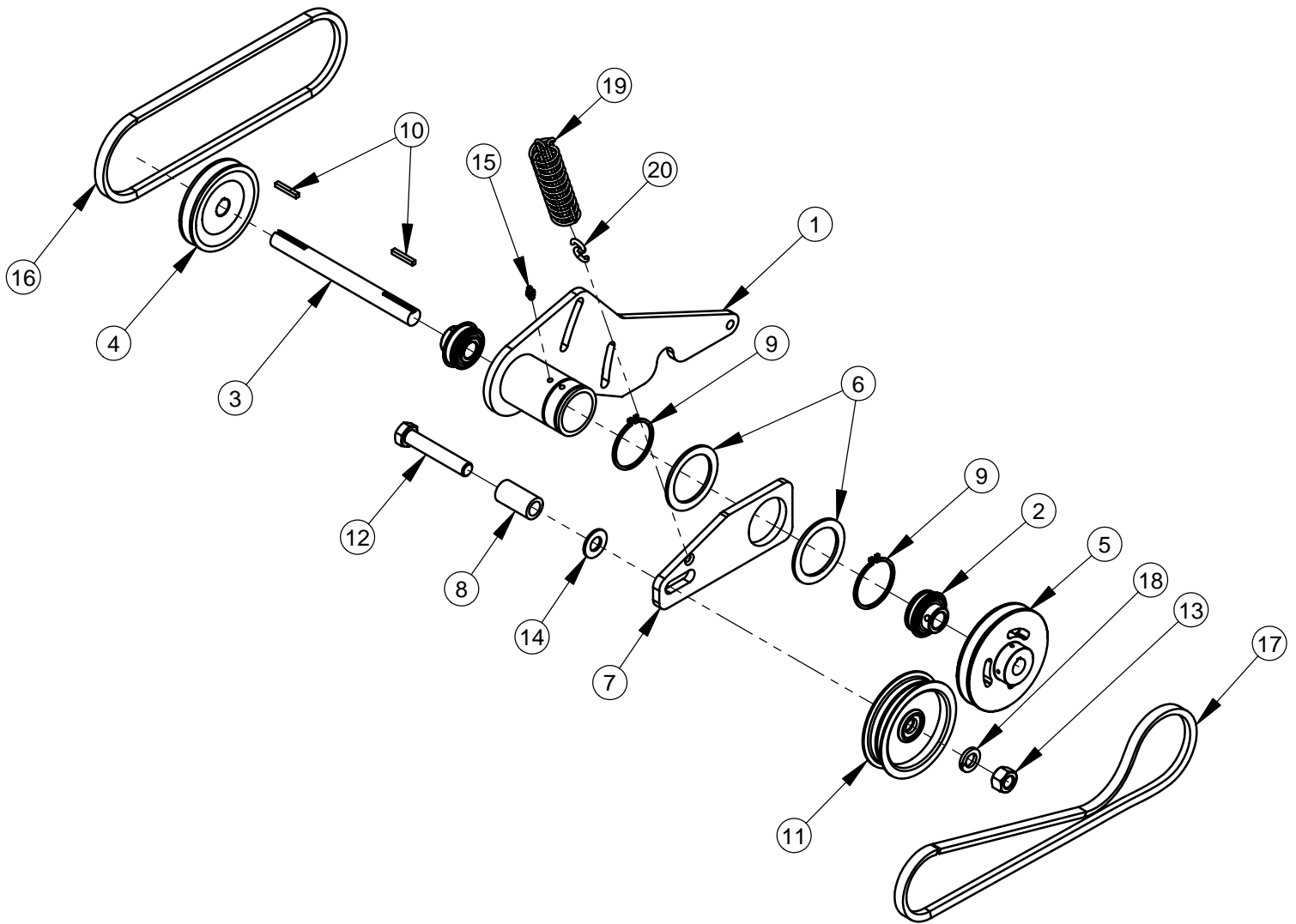
Differential Assembly #6010908



Differential Assembly #6010908

ITEM	PART NO.	QTY.	DESCRIPTION
1	2600206	1	Peerless Transaxle 1325-A
2	2500012	2	Bearing-1" Flange
3	2900058	4	Flat Washer, 1/2" SAE
4	2900084	4	Lock Washer, 1/2" Split
5	2900025	4	Cap Screw, Hex Hd., 1/2-13 x 1-1/4"
6	2500996	2	Wheel 10 x 3 1.75 Bore
7	2500867	2	Trantorque Bushing, 1"
8	6015050	1	Spring Tab
9	2500070	1	Spring, Extension, 3/4 Dia x 4
10	2600093	1	Eaton 7 Trans with Gear
11	2900068	1	Woodruff Key #404, 1/8" W x 1/2" Dia.
12	6015048	1	Free Wheel Mount Bracket
13	2900153	1	Friction Washer, 3/8"
14	2500002	1	Grip for 1" Flat Bar
15	6015051	1	Free Wheeling Lever
16	2900473	2	Flat Washer, 3/8" USS
17	2900013	1	Cap Screw, Hex Hd., 3/8-16 x 1-1/4"
18	6011149	1	Cup Pulley 4 "- A Groove
19	2900703	2	Roll Pin, 3/16" x 11/16"
20	2500519	1	Cooling Fan, 7"
21	2900083	1	Fender Washer, 1/4" x 1-1/4"
22	2900024	1	Lock Washer, 1/4" Split
23	2900144	1	Cap Screw, Hex Hd., 1/4-20 x 3/4"
24	2900028	4	Cap Screw, Hex Hd., 3/8-16 x 2-3/4"
25	2900006	6	Lock Washer, 3/8" Split
26	6010928	1	Transmission Control Arm
27	2900689	1	Cap Screw, Pan Hd., #10-32 x 3/4"
28	2900033	1	Hex Nut, 3/8-16
29	6015037	1	Differential Mount Weldment
30	2900710	2	Shoulder Bolt, 5/8" x 3/4"
31	2900037	2	Hex Nut, 1/2-13
32	2900014	1	Flat Washer, 3/8" SAE
33	2900005	1	Cap Screw, Hex Hd., 3/8-16 x 1"
34	6015038	1	Traction Bar Weldment
35	2900706	2	Grease Zerk, 1/4-28 Straight
36	6015036	1	Axle, Positraction 1" OD
37	2504028	2	Bearing, 1" ID x 2.04 OD x 1.28
38	6015035	2	Splined Bar 20T- 1.973 OD x 2.75
39	2901015	2	Roll Pin, 1/4" x 1-3/4"

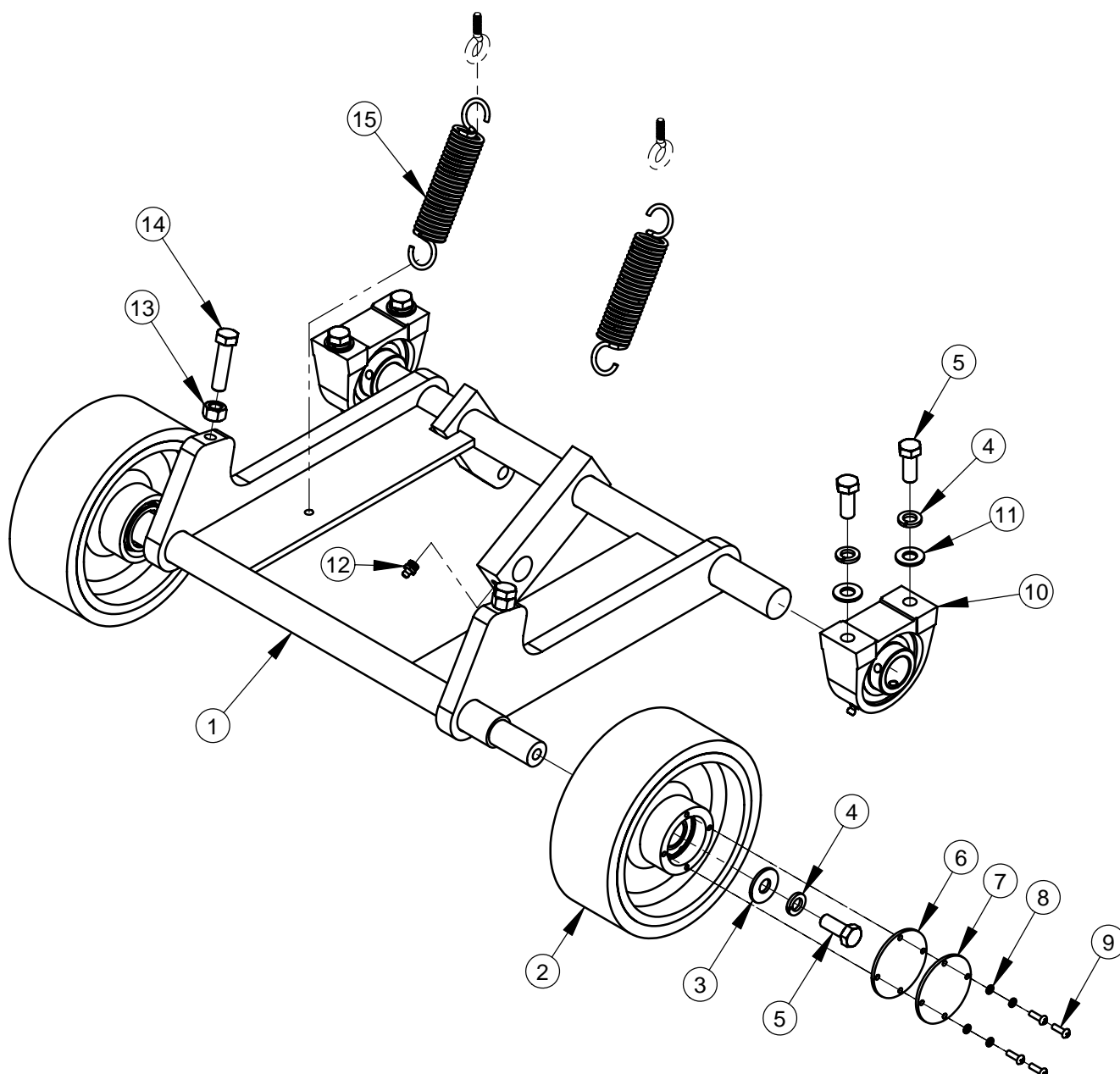
CC6160 Differential Driveshaft Assembly #6010926



CC6160 Differential Driveshaft Assembly #6010926

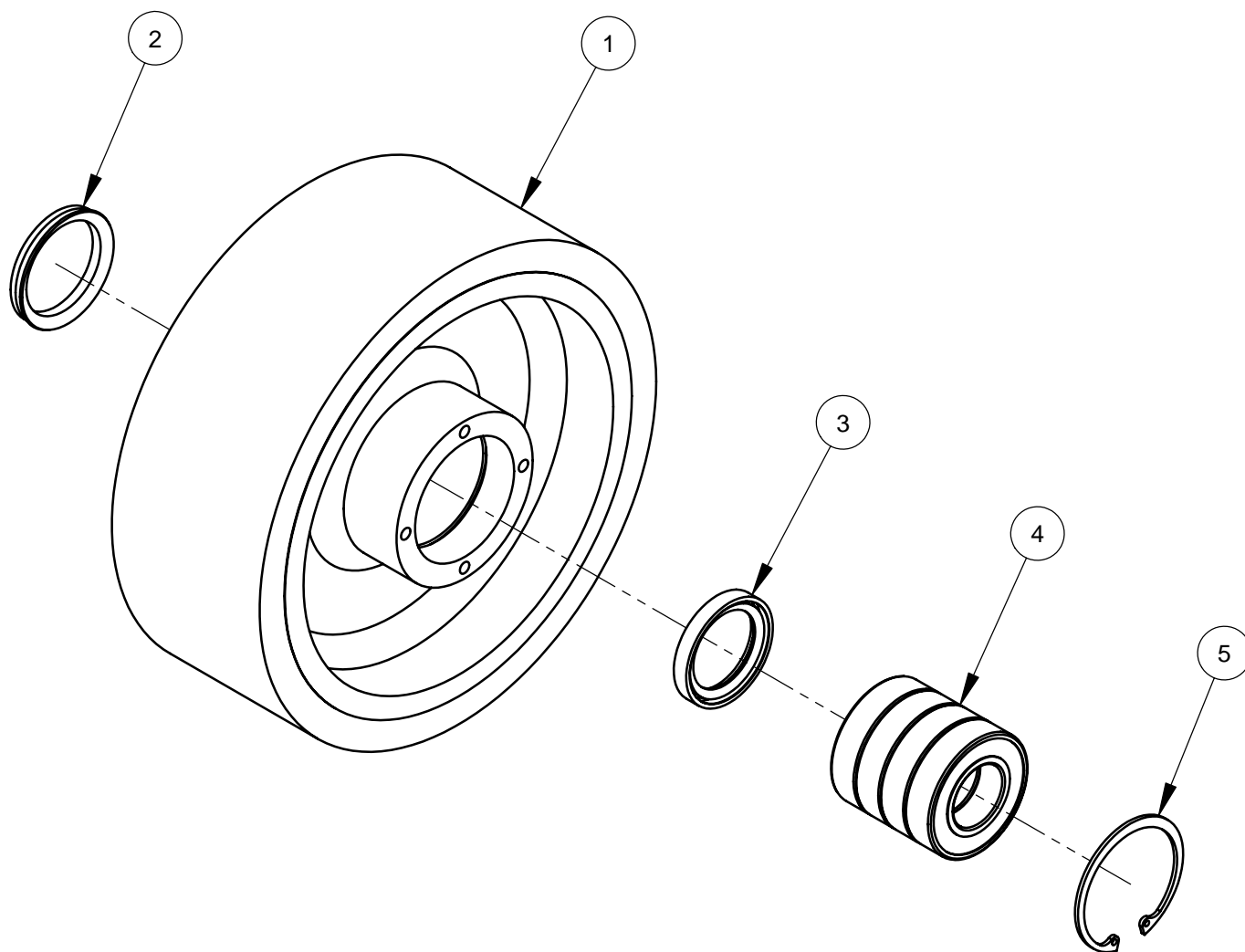
ITEM	PART NO.	QTY.	DESCRIPTION
1	6011244	1	Jackshaft Housing Weldment
2	2504026	2	Bearing, .75"ID x 1.85" OD x 1.22"
3	6015040	1	Jackshaft, 3/4 OD x 7 "
4	2500455	1	Pulley, 4" Single Groove w/Setscrews
5	2504029	1	Pulley, 4.75" OD x 3/4"
6	6015055	2	Washer, Plastic 2.25 x 3 x .125
7	6015056	1	Idler Bar
8	6015057	1	Idler Pulley Spacer
9	2504034	2	Retaining Ring, 2-1/4" External
10	6048229	2	Key, 3/16" Sq. x 1-1/4"
11	2504027	1	Idler Pulley, Heavy Duty Flat
12	2900099	1	Cap Screw, Hex Hd., 5/8-11 x 3-1/2"
13	2900112	1	Hex Nut, 5/8-11
14	2900002	1	Flat Washer, 5/8" SAE
15	2900706	1	Grease Zerk, 1/4-28 Straight
16	2504025	1	V-Belt, AX-33
17	2504036	1	V-Belt, A-46
18	2900113	1	Lock Washer, 5/8" Split
19	2501958	1	Spring, Drawbar, 1-1/8 x 5
20	2501959	1	S-Hook, 60 Lb Load Rated

Front Axle Assembly #6010910



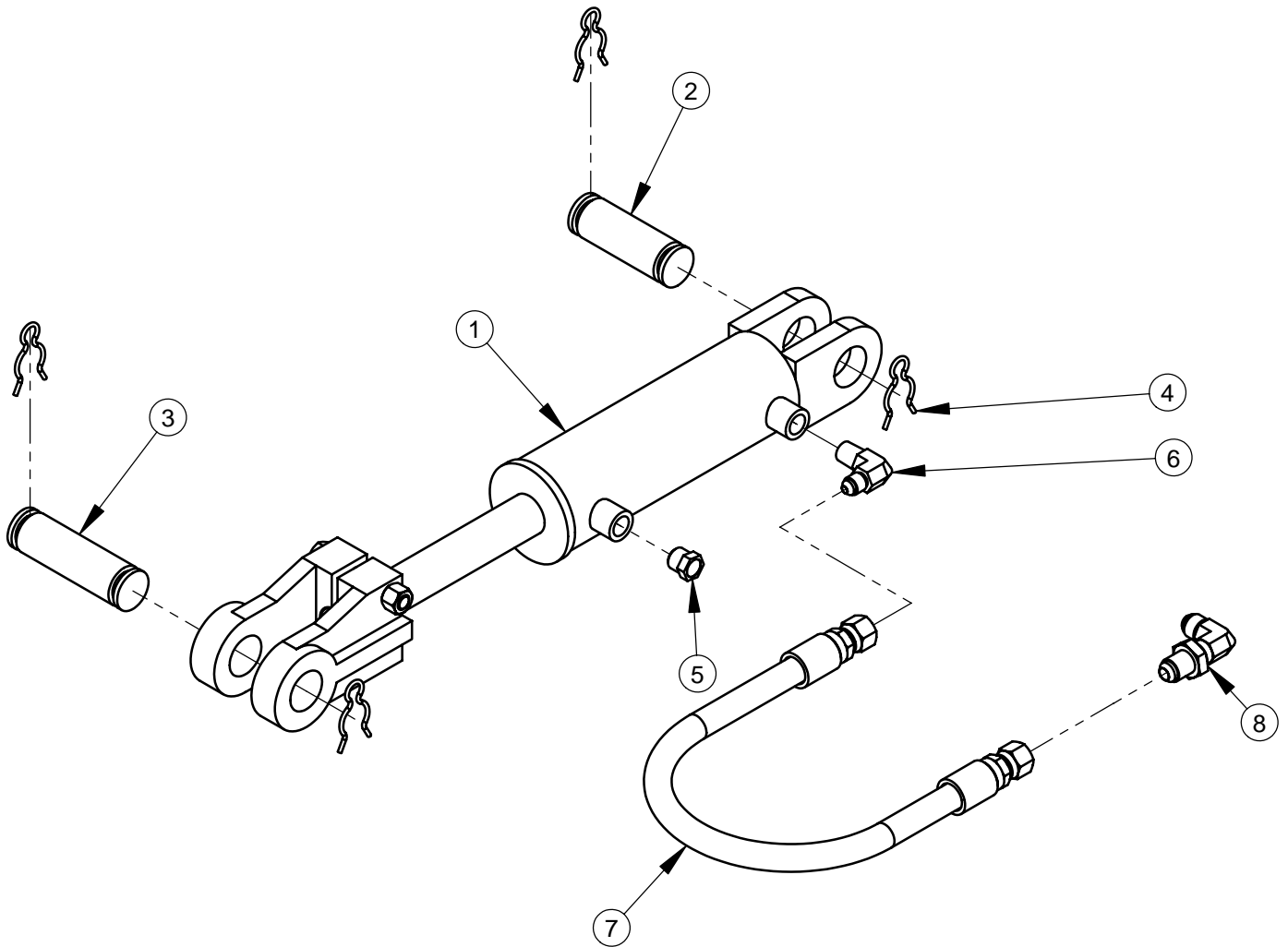
ITEM	PART NO.	QTY.	DESCRIPTION
1	6011265	1	Front Axle Weldment
2	6010581	2	Wheel Assembly, 8" Front
3	2900127	2	Flat Washer, 1/2" USS
4	2900084	6	Lock Washer, 1/2" Split
5	2900025	6	Cap Screw, Hex Hd., 1/2-13 x 1-1/4"
6	2501393	2	Wheel Cover Gasket
7	6010536	2	Wheel Cover
8	2900038	8	Lock Washer, #10 Split
9	2900159	8	Machine Screw, Rd. Hd., #10-24 x 5/8"
10	2500158	2	Pillow Block Bearing 1-1/4"
11	2900058	4	Flat Washer, 1/2" SAE
12	2900062	1	Grease Fitting, 1/8" NPT
13	2900037	2	Hex Nut, 1/2-13
14	2900106	2	Cap Screw, Hex Hd., 1/2-13 x 2"
15	2504041	2	Spring, Ext., 1.25" OD x 6.5"

Front Wheel Assembly #6010581



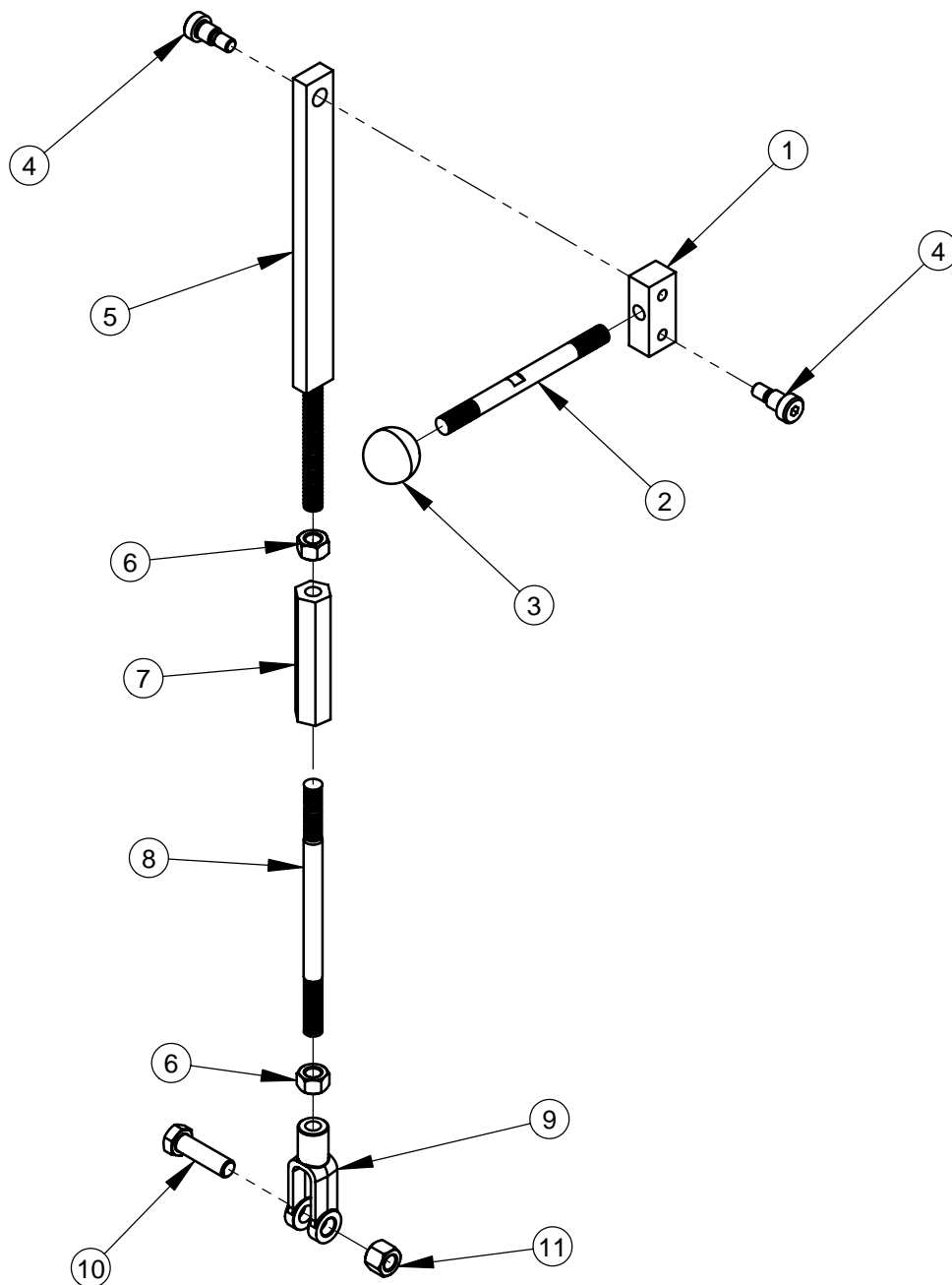
ITEM	PART NO.	QTY.	DESCRIPTION
1	2501390	1	Wheel, 8" Front
2	2501428	1	Seal, 1-1/2" V-Ring
3	2501391	1	Seal, 1-1/4" x 1-3/4" x 1/4"
4	2501418	4	Ball Bearing, 1" x 2" x 1/2"
5	2501392	1	Retaining Ring, 2" Internal

Hydraulic Cylinder Assembly #6010907



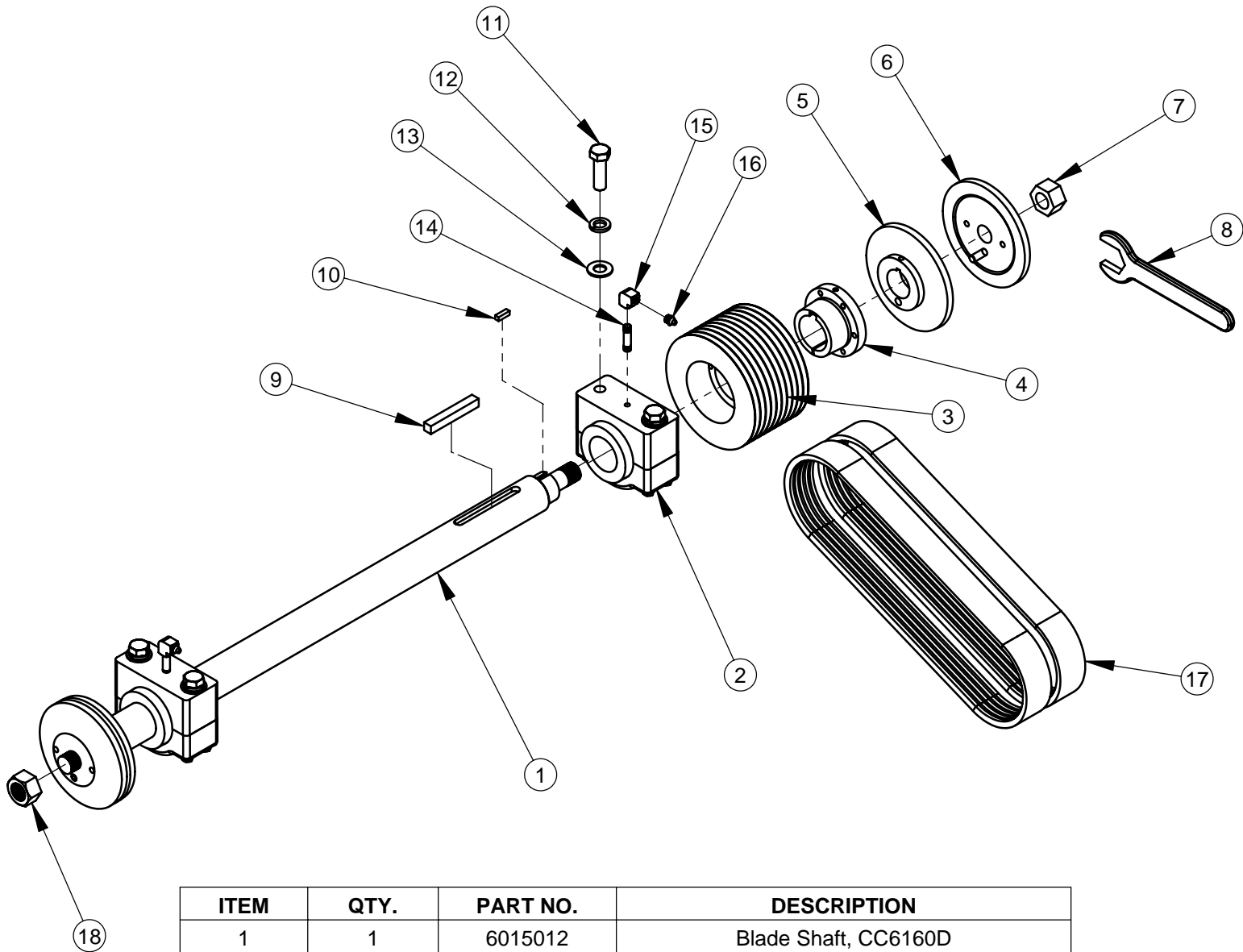
ITEM	PART NO.	QTY	DESCRIPTION
1	2500177	1	Hydraulic Cylinder
2	6010031	1	Cylinder Pin, 3"
3	6010119	1	Cylinder Pin, 3-1/2"
4	2900064	4	Hair Pin Cotter, 3/4"
5	3200067	1	Cylinder Breather, 1/4" NPT
6	3200057	1	Elbow, 1/4" M. Pipe to 1/4" M. JIC
7	6015017	1	Hyd Hose Assy 3/8 x 21
8	3201464	1	Fitting, 3/8"M. JIC Bulkhead Elbow

Positraction Engagement Assembly #6010909



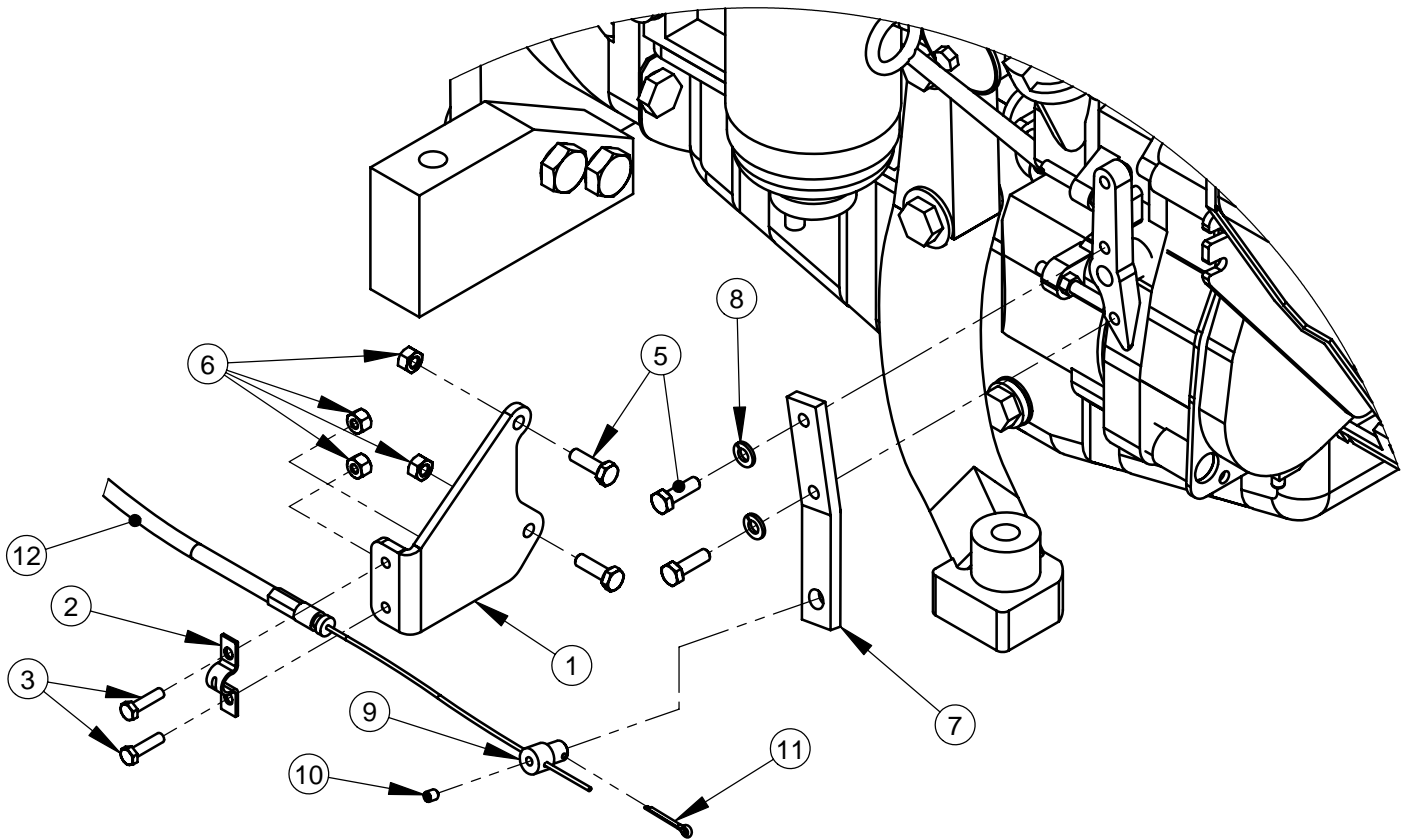
ITEM	PART NO.	QTY.	DESCRIPTION
1	6015043	1	Disengage Pivot Bar
2	2501920	1	Stud, Engage Handle, 1/2-13 x 6"
3	2504032	1	Knob, 1/2-13 x 1-1/2 Dia
4	2900588	2	Shoulder Screw, 1/2" x 1/2" (3/8-16)
5	6015044	1	Upper Disengage Weldment
6	2900037	2	Hex Nut, 1/2-13
7	2901013	1	Coupling Nut, 1/2-13 x 4 LH/RH
8	2501919	1	Stud, 1/2-13 RH x 1/2-13 LH x 8"
9	2900158	1	Yoke, 1/2-13
10	2900139	1	Cap Screw, Hex Hd., 1/2-13 x 1-3/4"
11	2900026	1	Lock Nut, 1/2-13 Nylon

Blade Shaft Assembly #6010911



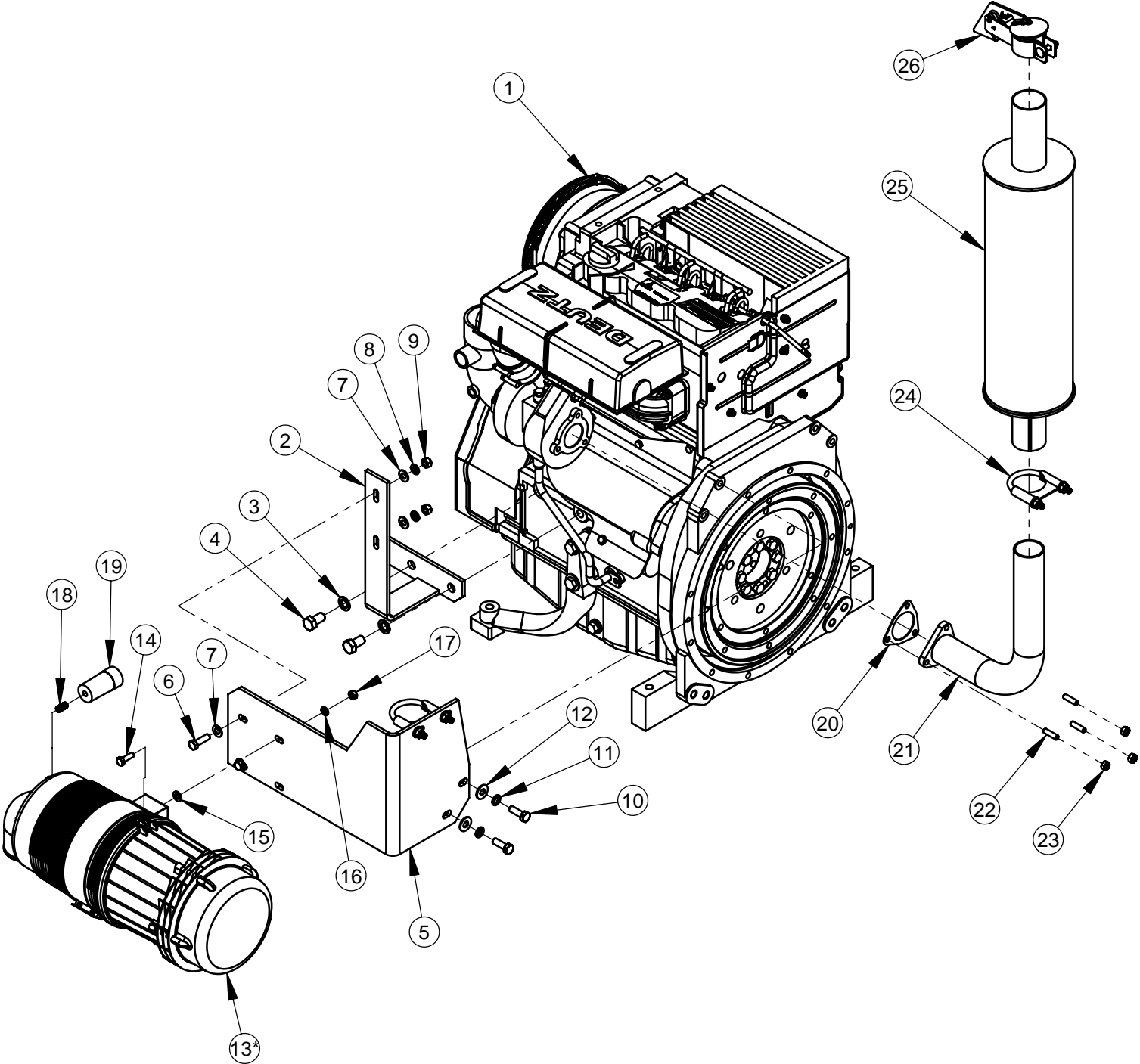
ITEM	QTY.	PART NO.	DESCRIPTION
1	1	6015012	Blade Shaft, CC6160D
2	2	2501624	Bearing, 2" Pillow Block
3	1	2501778	Sheave 3V-6.50, 10 Groove QD Style
4	1	2500153	QD Bushing, SK x 2" w/Fasteners
5	2	6010038	Inner Flange 6"
6	2	6015031	Outer Flange, 6" w/ Pin
7	1	2900173	Hex Nut, 1" Right Hand
8	1	2500357	Wrench, 1-1/2" Open End
9	1	2501757	Key 1/2" Square x 3" Long
10	2	6010040	Key, 1/4" Sq. x 13/16"
11	4	2900637	Cap Screw, Hex Hd., 5/8-18 X 2"
12	4	2900113	Lock Washer, 5/8" Split
13	4	2900002	Flat Washer, 5/8" SAE
14	2	3201462	Nipple, 1/8" NPT X 1-1/2"
15	2	3200154	Pipe Elbow, 1/8" NPT Female
16	2	2900062	Grease Fitting, 1/8" NPT
17	2	2503416	Banded Belt, 5/3V/600 5-Strand
18	1	2900212	Hex Nut, 1"-14 Left Hand

Throttle Cable Assembly #6010914



ITEM	PART NO.	QTY.	DESCRIPTION
1	6010523	1	Throttle Bracket
2	2500940	1	Throttle Cable Clamp
3	2900015	2	Machine Screw, Hex Hd., #10-24 x 3/4"
4	2900017	2	Lock Nut, #10-24 Nylon
5	2900310	4	Cap Screw, Hex Hd., M6 x 20mm
6	2900302	2	Lock Nut, M6 Nylon
7	6013029	1	Throttle Arm
8	2900024	2	Lock Washer, 1/4" Split
9	6048212	1	Pivot Pin
10	2900059	1	Set Screw, Soc. Hd., #10-32 x 1/4"
11	2900034	1	Cotter Pin, 3/32" x 3/4"
12	2500376	1	Vernier Throttle Cable

Engine Assembly #6010915

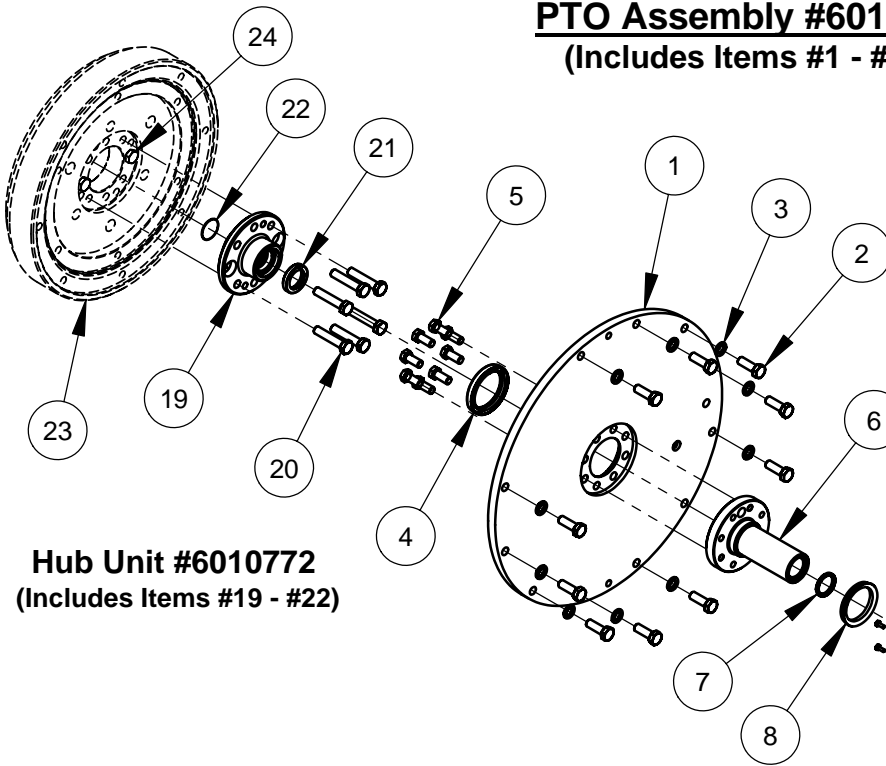


Replacement Elements for Item #13 (Not Shown)
#2504023 - Outer Primary Filter
#2504024 - Inner Safety Filter

Engine Assembly #6010915

ITEM	PART NO.	QTY.	DESCRIPTION
1	2600326	1	Engine, Deutz Model BF3L2011
2	6011283	1	Air Cleaner Mount Brace
3	2900388	2	Lock Washer, M14 Split
4	2900896	2	Cap Screw, Hex Hd., M14 x 25mm
5	6011278	1	Muffler Brace
6	2900013	2	Cap Screw, Hex Hd., 3/8-16 x 1-1/4"
7	2900014	4	Flat Washer, 3/8" SAE
8	2900006	2	Lock Washer, 3/8" Split
9	2900033	2	Hex Nut, 3/8-16
10	2900223	2	Cap Screw, Hex Hd., M10 x 30mm
11	2900321	2	Lock Washer, M10 Split
12	2900473	2	Flat Washer, 3/8" USS
13	2501739	1	Air Cleaner with Pre-Cleaner
14	2900138	2	Cap Screw, Hex Hd., 5/16-18 x 1"
15	2900022	2	Flat Washer, 5/16" SAE
16	2900031	2	Lock Washer, 5/16" Split
17	2900141	2	Hex Nut, 5/16-18
18	3200117	1	Close Nipple, 1/8" NPT
19	2500423	1	Restriction Indicator
20	2701618	1	Gasket, Turbo Outlet
21	6013110	1	Exhaust Pipe
22	2702549	3	Stud, M8 x 30mm
23	2900343	3	Hex Nut, M8
24	2700748	2	Muffler Clamp 2"
25	2700746	1	Muffler, 2" Vertical
26	2700747	1	Rain Cap 2"

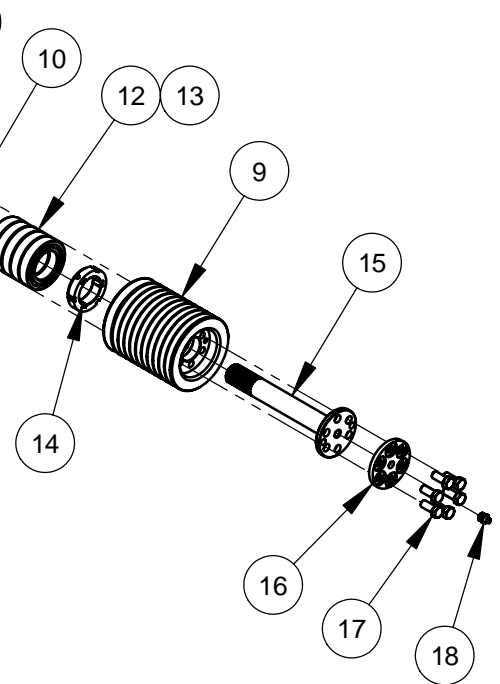
PTO Assembly #6010770
(Includes Items #1 - #22)



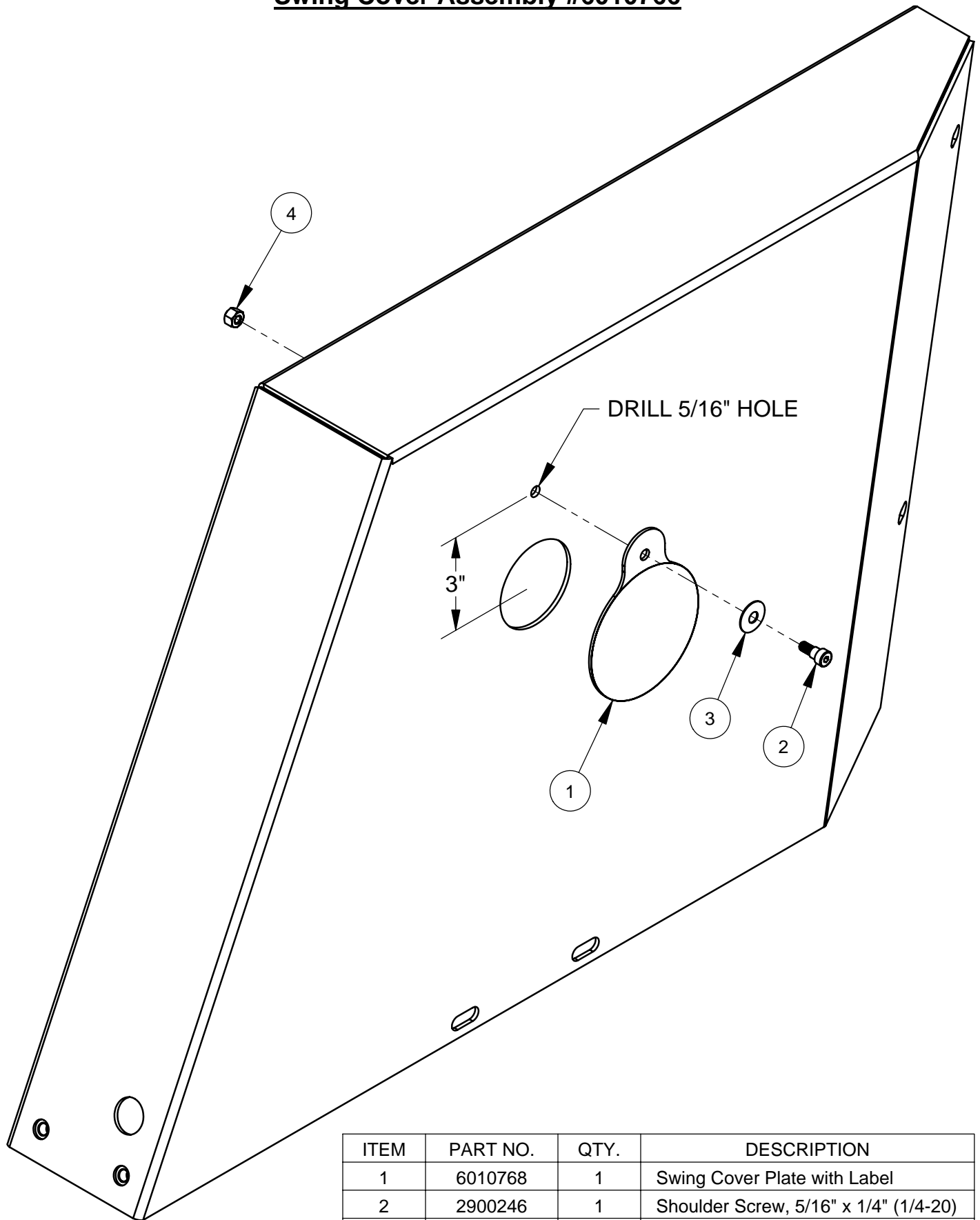
Hub Unit #6010772
(Includes Items #19 - #22)

PTO Unit #6010771
(Includes Items #5 - #18)

ITEM	PART NO.	QTY.	DESCRIPTION
1	6010352	1	Inner Ring Support
2	2900223	11	Cap Screw, Hex Hd., M10 x 30mm
3	2900321	11	Lock Washer, M10 Split
4	2501983	1	Seal, 2" x 2-5/8" x 5/16"
5	2900621	8	Cap Screw, Hex Hd., 3/8-16 x 7/8"
6	2501717	1	Shaft Support Sleeve
7	2501984	1	Seal, 1" x 1-1/4" x 1/8"
8	2500751	1	Seal, 1-3/4" V-Ring
9	2501722	1	Sheave, 4" x 11 Groove
10	2501719	1	Bearing Retainer Plate
11	2900624	6	Machine Screw, Hex Hd., #6-32 x 3/8"
12	2501986	5	Ball Bearing, 40mm x 68mm x 15mm
13	2501747	4	Shim, 40mm x 50mm x 0.1mm
14	2900654	1	Bearing Lock Nut, 1-9/16"-18
15	2501720	1	Splined Drive Shaft
16	2501985	1	Grease Disc
17	2900954	6	Cap Screw, Hex Hd., 3/8-24 x 7/8"
18	2900062	1	Grease Fitting, 1/8" NPT
19	2501721	1	Coupling Hub
20	2900633	6	Cap Screw, Hex Hd., M10x1.0 x 50mm
21	2501714	1	Seal, 1" x 1-1/2" x 1/4"
22	2501670	1	Hubbard Plug, 1-1/8"
23	2701276	1	Flywheel, Deutz Engine
24	2702756	2	Cap Screw, Hex Hd., M10x1.0 x 40mm

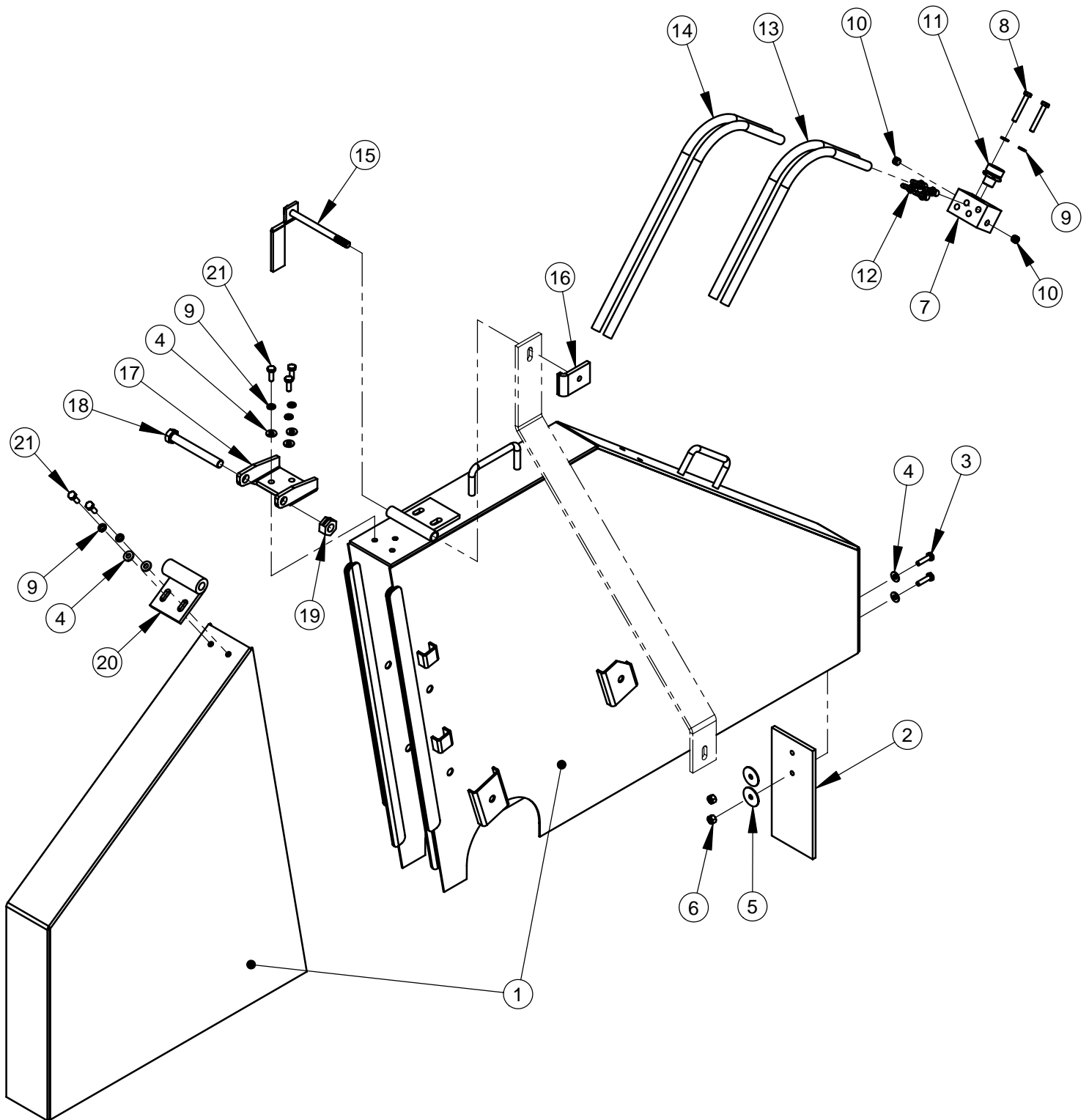


Swing Cover Assembly #6010766



ITEM	PART NO.	QTY.	DESCRIPTION
1	6010768	1	Swing Cover Plate with Label
2	2900246	1	Shoulder Screw, 5/16" x 1/4" (1/4-20)
3	2900252	1	Belleville Washer, 5/16"
4	2900010	1	Lock Nut, 1/4-20 Nylon

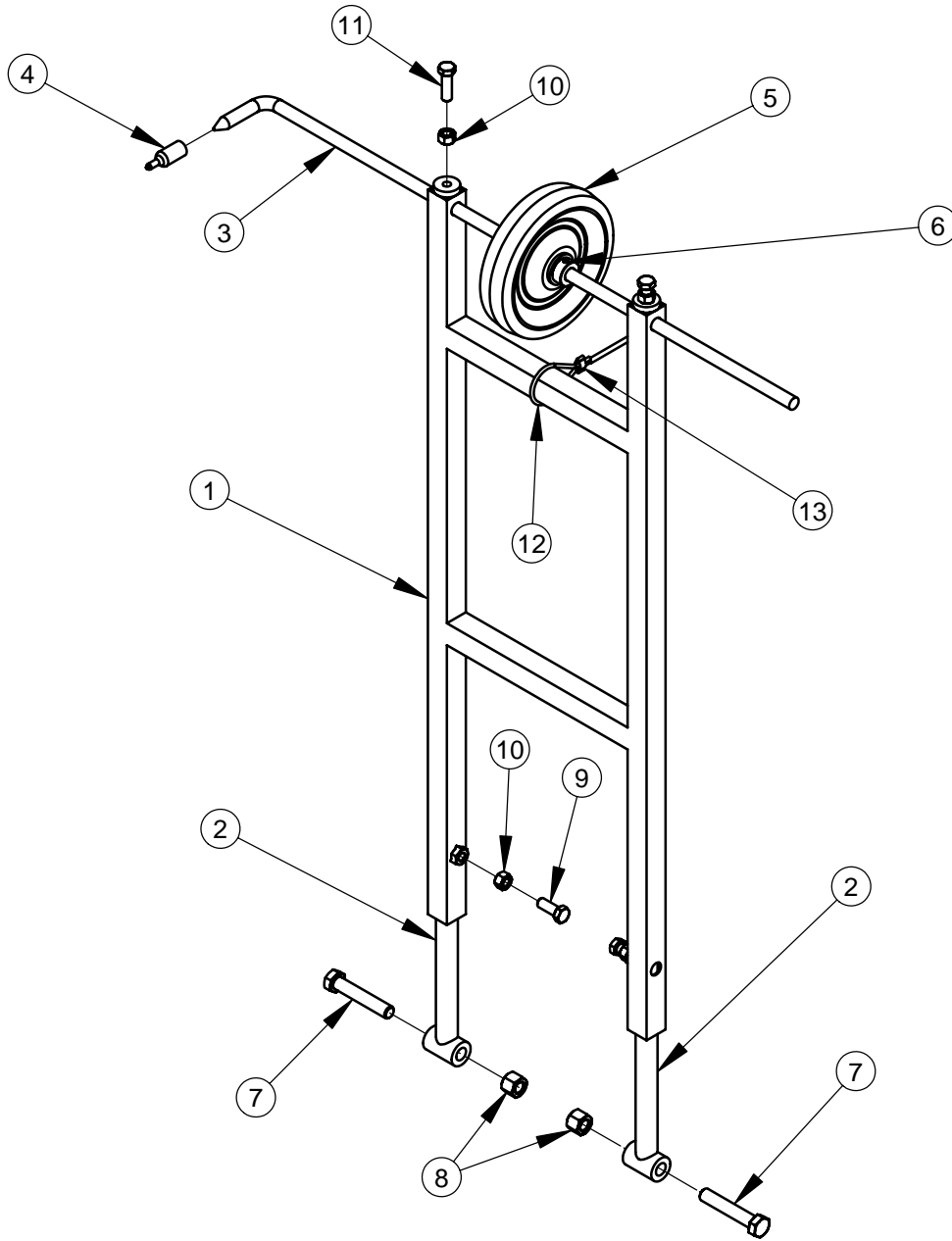
48" Blade Guard Assembly #6015060



48" Blade Guard Assembly #6015060

ITEM	PART NO.	QTY.	DESCRIPTION
1	6015027	1	48" Blade Guard (CC6160D)
2	2504004	1	Splash Flap- Bladeguard
3	2900008	2	Cap Screw, Hex Hd., 1/4-20 x 1"
4	2900009	7	Flat Washer, 1/4" SAE
5	2900083	2	Fender Washer, 1/4" x 1-1/4"
6	2900010	2	Lock Nut, 1/4-20 Nylon
7	2504005	1	Water Manifold 4-Port
8	2900392	2	Cap Screw, Hex Hd., 1/4-20 x 1-3/4"
9	2900024	7	Lock Washer, 1/4" Split
10	3200001	2	Plug, 1/8" NPT
11	3200002	1	Fitting, 3/8" M. Pipe to 3/4" M. Garden
12	3200018	4	Fitting, 1/8" M Pipe to 1/4" Hose Barb
13	3201455	2	Hose, 1/4" ID x 32" Clear Braided
14	3201456	2	Hose, 1/4" ID x 43" Clear Braided
15	2504006	1	Guard Securing Bolt
16	2504009	1	Retaining Clip
17	2504002	1	Hinge- Rear Half
18	2900509	1	Cap Screw, Hex Hd., 1/2-20 x 4"
19	2900704	1	Center Locknut, 1/2"-13
20	2504003	1	Hinge- Front Half
21	2900144	5	Cap Screw, Hex Hd., 1/4-20 x 3/4"

Optional Front Pointer Assembly #6010916

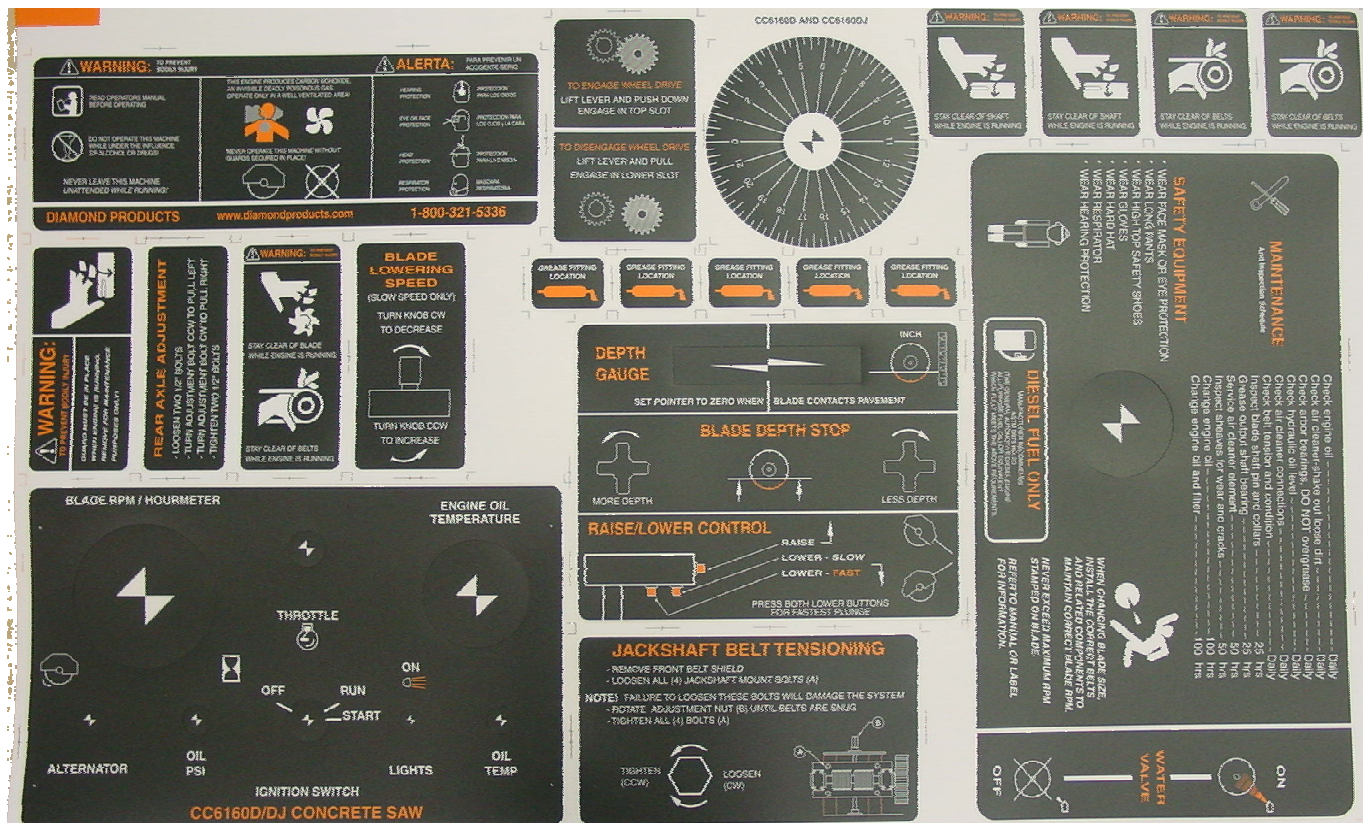


ITEM	PART NO.	QTY	DESCRIPTION
1	6010541	1	Front Pointer Frame
2	6011152	2	Front Pointer Arm
3	6013025	1	Front Pointer Rod
4	2500740	1	Pointer Cap
5	2501409	1	Wheel, 6"
6	2500007	2	Set Collar, 1/2" with Set Screw
7	2900105	2	Cap Screw, Hex Hd., 1/2-13 x 2-3/4"
8	2900026	2	Lock Nut, 1/2-13 Nylon
9	2900005	2	Cap Screw, Hex Hd., 3/8-16 x 1"
10	2900033	4	Hex Nut, 3/8-16
11	2900013	2	Cap Screw, Hex Hd., 3/8-16 x 1-1/4"
12	6013055	1	Pointer Cable 12'
13	3200221	1	Pinch Clamp, Two Ear

Decal Group

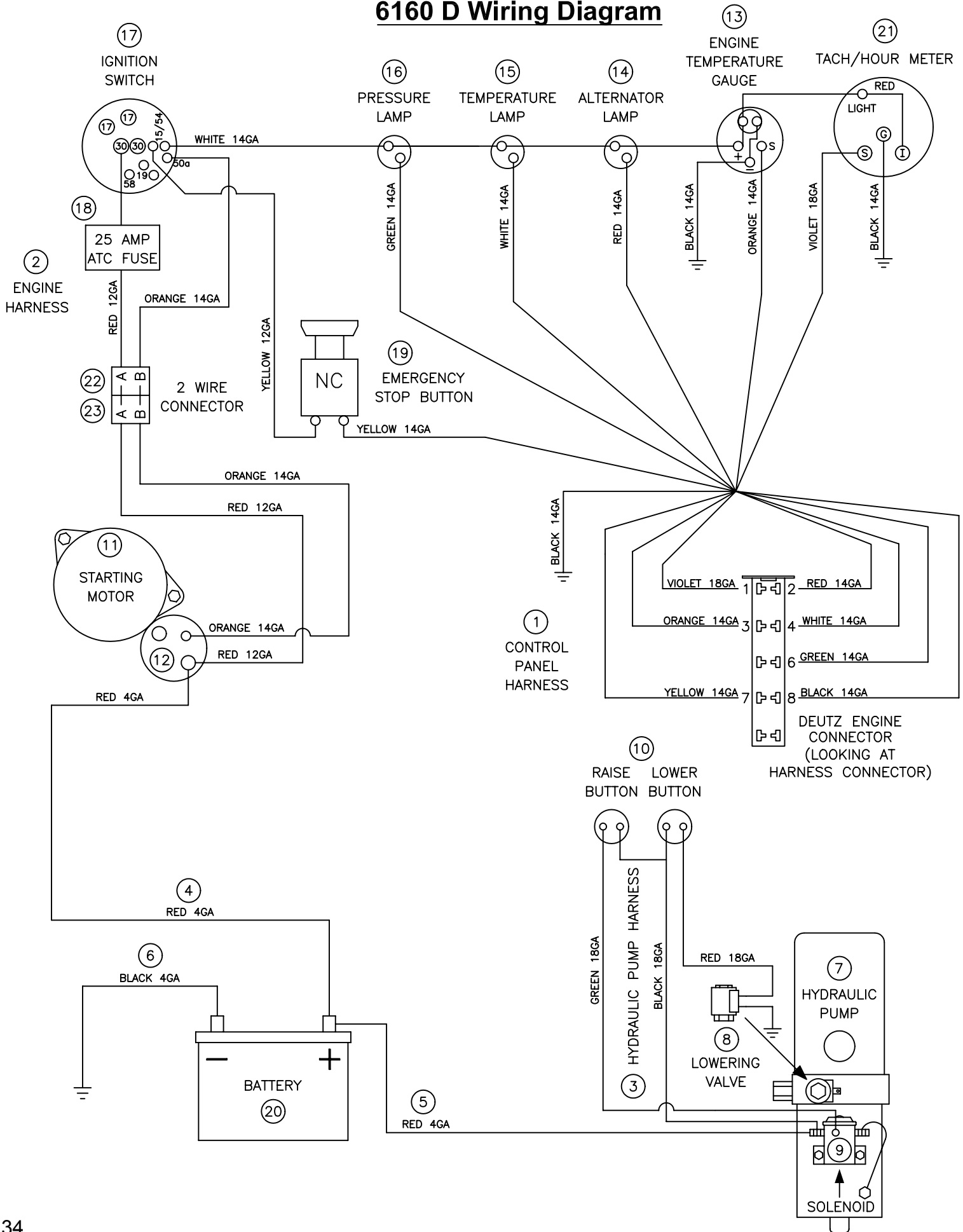


CORE CUT DECALCC6160D
#1800728



CC6160 SAW LABELS SHEET
#1800729

6160 D Wiring Diagram



6160D Wiring Diagram

Item	Part No.	Qty.	Description	Item	Part No.	Qty.	Description
1	2800396	1	Control Panel Harness	17	2700783	1	Ignition Switch
2	2800429	1	Engine Harness (Includes #22 & #23)		2701261	1	Ignition Key
3	2800562	1	Hydraulic Pump Harness	18	2800560	1	Fuse, 25 Amp Clear ATO/ATC
4	2501760	1	Battery Cable, Positive (Red)	19	2800525	1	Switch, Push Button Stop
5	2501764	1	Battery Cable, Positive Jumper (Red)	20	2800561	1	Battery, Group 26-60
6	2501761	1	Battery Cable, Negative (Black)	21	2800526	1	Tach/Hour Meter Alternator Pick-Up
7	2600070	1	Hydraulic Pump Unit (Includes #8 & #9)		2800267	1	Light Bulb, Wedge Base
8	2700243	1	Valve Coil	22	2800145	1	Connector, 2 Wire Shroud
	2700244	1	Valve Stem		2800114	1	Male Terminal, 14/16 Gage Wire
9	2700169	1	Solenoid, Power Unit Motor		2800112	1	Male Terminal, 12 Gage Wire
10	2800372	2	Pushbutton Switch		2800174	1	Cable Seal, Gray
11	2702274	1	Starting Motor (Includes #12)		2800175	1	Cable Seal, Blue
12	2701823	1	Solenoid, Starter Motor	23	2800146	1	Connector, 2 Wire Tower
13	2702333	1	Engine Temperature Gauge		2800115	1	Female Terminal, 14/16 Gage Wire
14	2700785	1	Alternator Light		2800113	1	Female Terminal, 12 Gage Wire
	2700923	1	(Bulb Only)		2800174	1	Cable Seal, Gray
15	2700786	1	Oil Pressure Light		2800175	1	Cable Seal, Blue
	2700923	1	(Bulb Only)				
16	2700787	1	Oil Temperature Light				
	2700923	1	(Bulb Only)				

EQUIPMENT AND PARTS WARRANTY

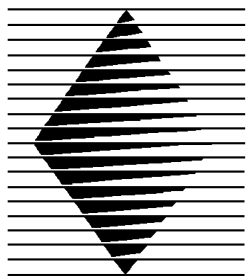
Diamond Products warrants all equipment manufactured by it against defects in workmanship or materials for a period of one (1) year from the date of shipment to Customer.

The responsibility of Diamond Products under this Warranty is limited to replacement or repair of defective parts at Diamond Products' Elyria, Ohio factory, or at a point designated by it, of such parts as shall appear to us upon inspection at such parts, to have been defective in material or workmanship, with expense for transportation and labor borne by Customer.

In no event shall Diamond Products be liable for consequential or incidental damages arising out of the failure of any Product to operate properly.

Integral units such as engines, electric motors, batteries, transmissions, etc., are excluded from this Warranty and are subject to the prime manufacturer's warranty.

THIS WARRANTY IS IN LIEU OF ALL OTHER WARRANTIES, EXPRESSED OR IMPLIED, AND ALL SUCH OTHER WARRANTIES ARE HEREBY DISCLAIMED.



**DIAMOND
PRODUCTS**

333 Prospect Street, Elyria, Ohio 44035
(440) 323-4616 • (800) 321-5336 • Fax (440) 323-8689
www.diamondproducts.com