



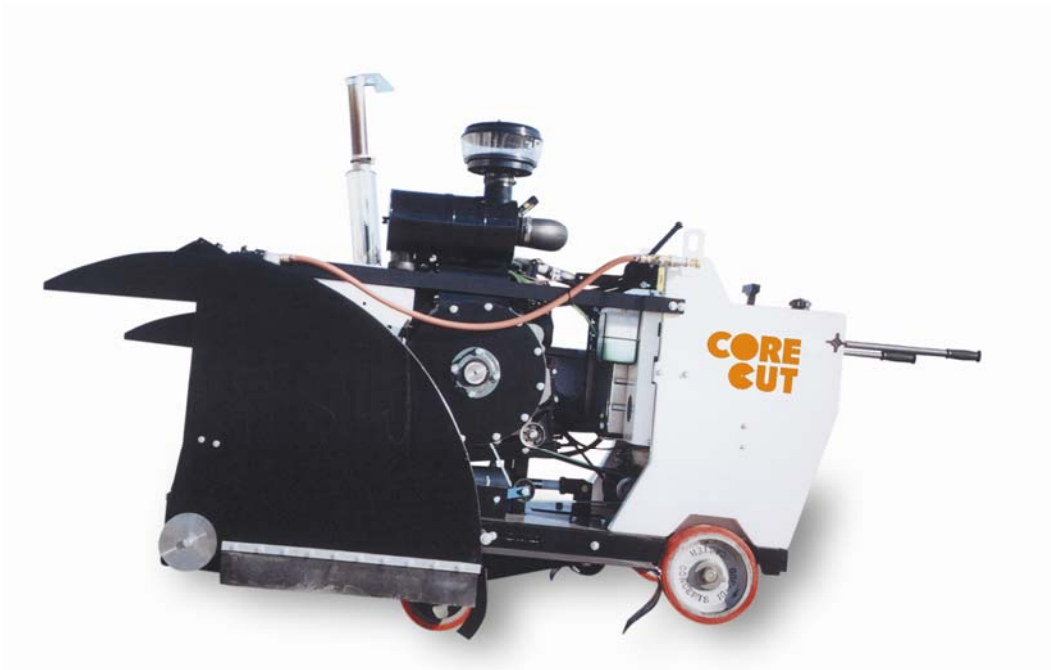
**DIAMOND
PRODUCTS**

Specialty Equipment Division



CC-DC-SS Deep Cut Saw

PARTS BOOK



REVISED: 3-1-05

CC-DC-SS SPECIFICATION SHEET

Dimensions:

Length – 70”
Height – 53”
Frame Width – 30”
Weight – 2550lbs
Blade Shaft Diameter – 2 ½”

Engine:

4.3 L GM 120 HP
Water Cooled
Mechanical Governor

Blade Sizes:

Maximum Blade Diameter – 66”
Minimum Blade Diameter – 36”
Blade Shaft RPM 833

Fuel Capacity:

9 US Gallons

Gauges:

Tachometer, Oil Pressure, Water Temp, Vacuum, Volt and Hour Meter

CC-DC-SS PARTS LIST TABLE OF CONTENTS

DESCRIPTION	DRAWING NUMBER
Specifications	
Warnings	
Dash and Battery	Drawing #1
Fule Tank	Drawing #2
Lift Pump/Upright Frame/ Base	Drawing #3
Blade and Jack Shaft	Drawing #4
Transmission Group	Drawing #5
Under Carriage and Rear Axle	Drawing #6
Cooling and Filter System	Drawing #7
Radiator and Hoses	Drawing #8
Governor and Engine Drive Components	Drawing #9
Wiring	Drawing #10
Boggie Wheel	Drawing #11
Blade Arbor	Drawing #12
Governor Adjustment	Drawing #13

CC-DC-SS
WARNING LIST

WARNING: Clean Radiator filter daily!
A dirty filter will cause overheating

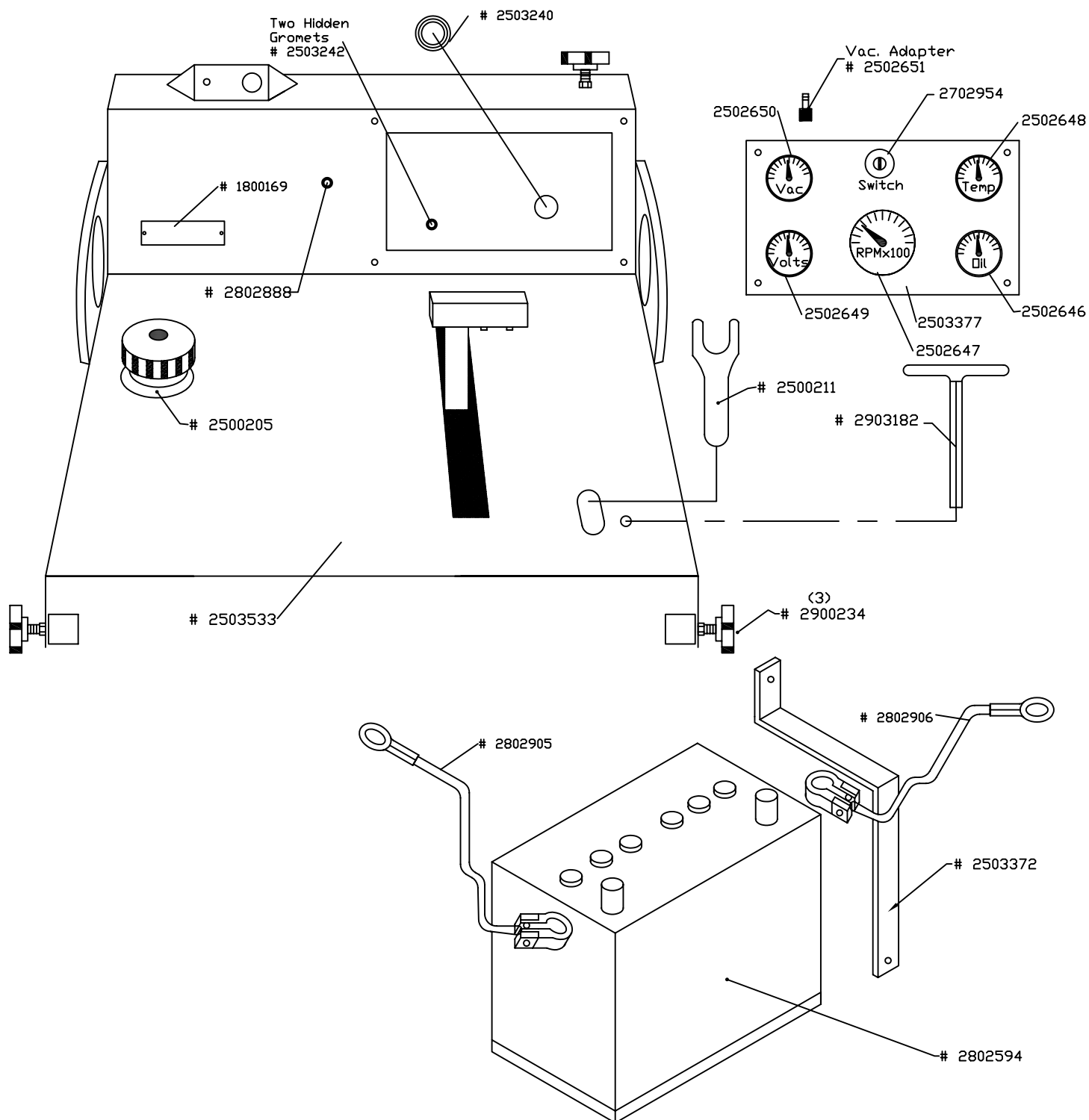
WARNING: Keep ALL GUARDS in place.

WARNING: DO NOT OVER TIGHTEN V-BELTS
When slamming or pinching occurs
those belts are your fuse.

CC-DC-SS PARTS LIST DRAWING # 1

Part Number	Description	Qty. Required
1800169	Serial Number Tag	1
2500205	Fuel Tank Grommet	1
2500211	Wrench	1
2502646	Oil Pressure Guage	1
2502647	Tach/Hour Meter	1
2502648	Temp Guage	1
2502649	Volt Meter	1
2502650	Vacuum Guage	1
2502651	Adapter	1
2503240	Grommet	1
2503242	Grommet	2
2503372	Battery Tie Down	1
2503377	Dash Panel	1
2503533	Upright Frame 30"	1
2702954	Ignition Switch	1
2802594	Battery	1
2802888	Switch	1
2802905	Positive Battery Cable	1
2802906	Negative Battery Cable	1
2900234	Handle Bar Locks	3
2903182	T-Handle Hex Key	

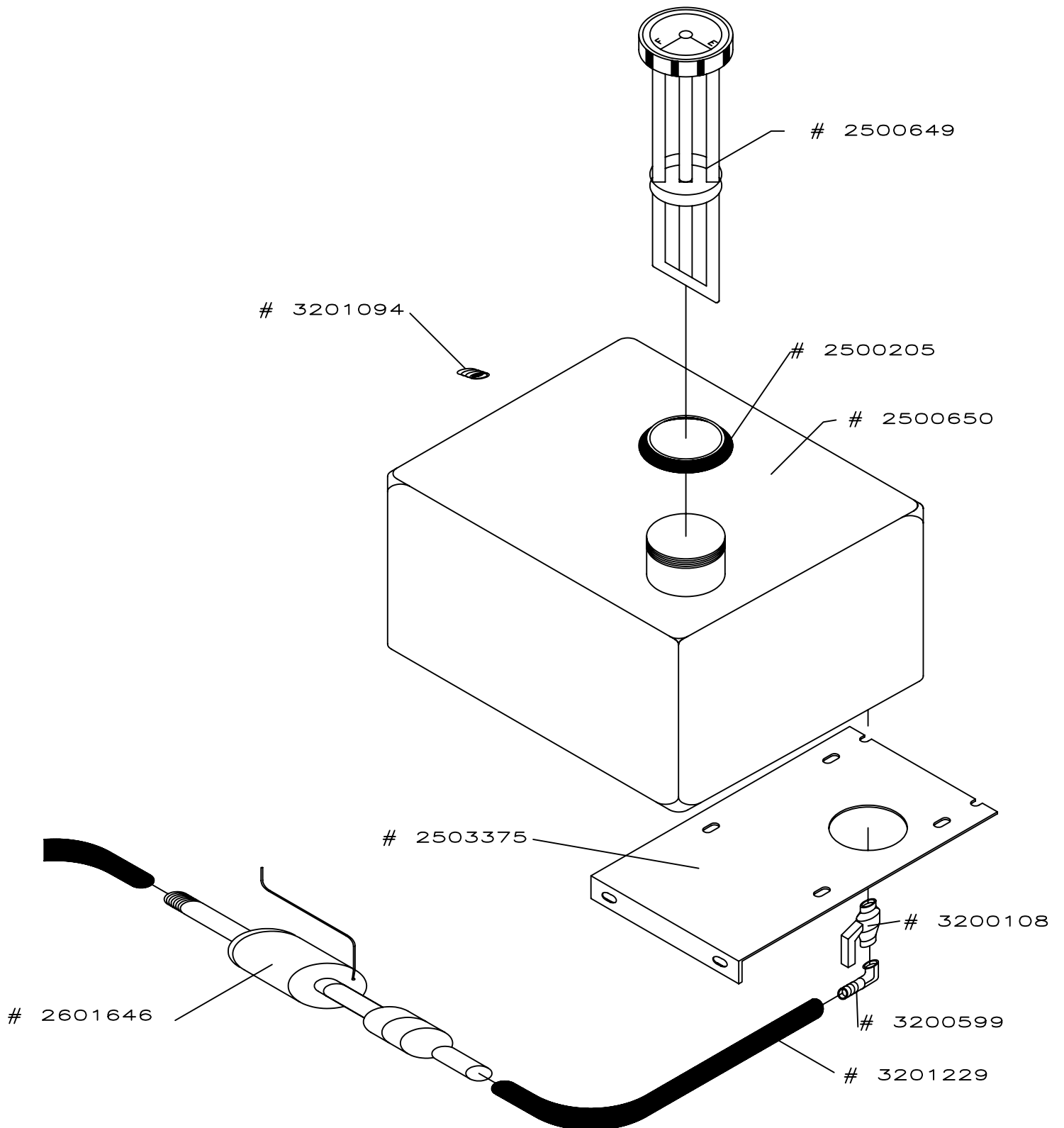
Drawing #1



CC-DC-SS PARTS LIST DRAWING # 2

Part Number	Description	Qty. Required
2500205	Fuel Tank Grommet	1
2500649	Fuel Cap	1
2500650	Fuel Tank	1
2503375	Fuel Tank Mount Plate	1
2601646	Fuel Pump Electric	1
3200108	1/4" Fuel Shut Off	1
3200599	Fitting	1
3201094	1/8" Pipe Plug	1
3201229	5/16" Fuel Line	2

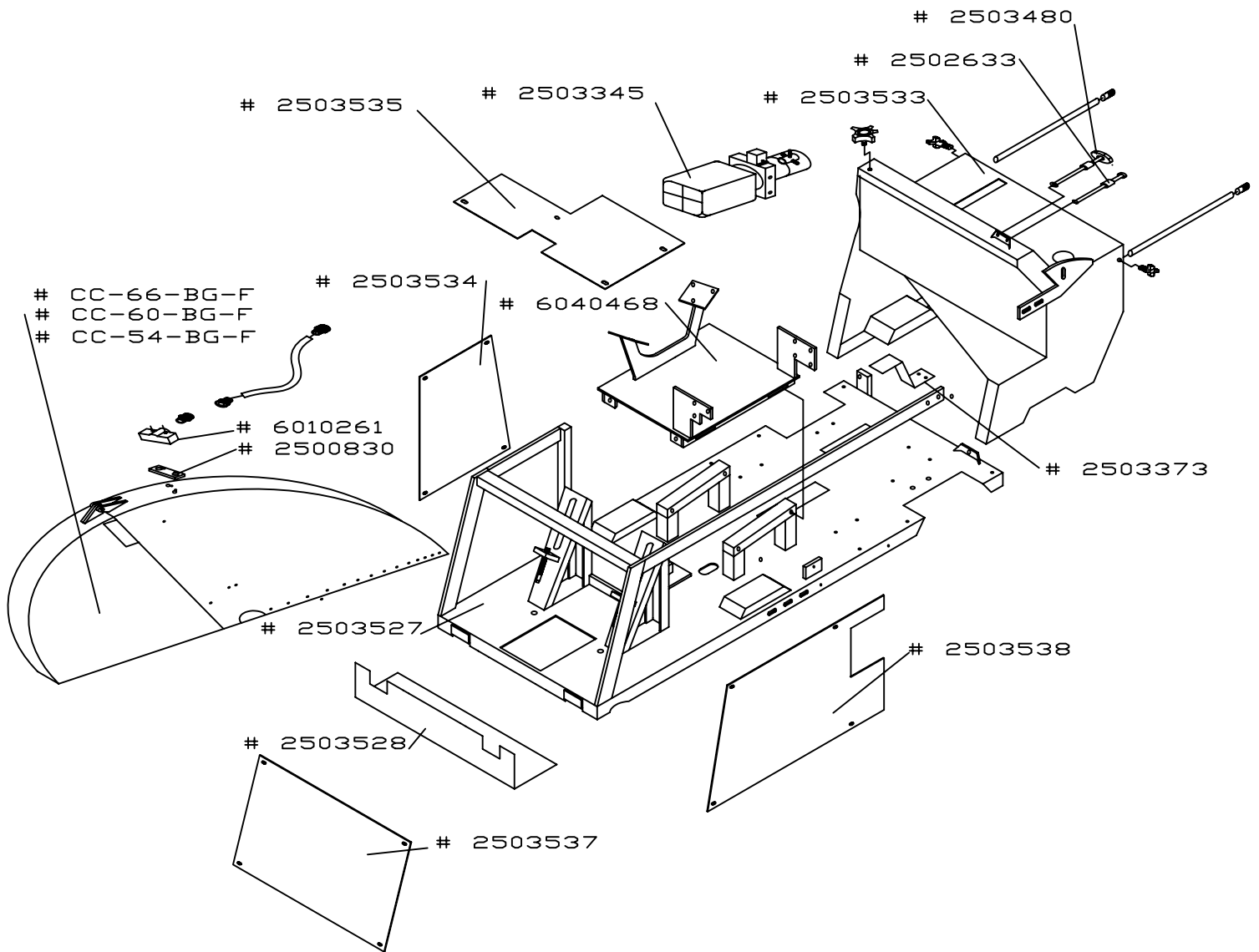
Drawing #2



CC-DC-SS PARTS LIST DRAWING # 3

Part Number	Description	Qty. Required
2500830	Gasket for Manifold	2
2502633	Choke Cable	1
2503345	Lift Pump	1
2503373	Chain Guard	1
2503480	Throatle Cable	1
2503527	Base Frame 30"	1
2503528	Skid Plate 30"	1
2503533	Upright Frame 30"	1
2503534	RH Shield	1
2503535	Top Shield	1
2503537	Front Shield	1
2503538	LH Shield	1
6010261	Manifold	2
6040468	Engine Base	1
CC-54-BG-F	54" Blade Guard	1
CC-60-BG-F	60" Blade Guard	1
CC-66-BG-F	66" Blade Guard	1

Drawing #3

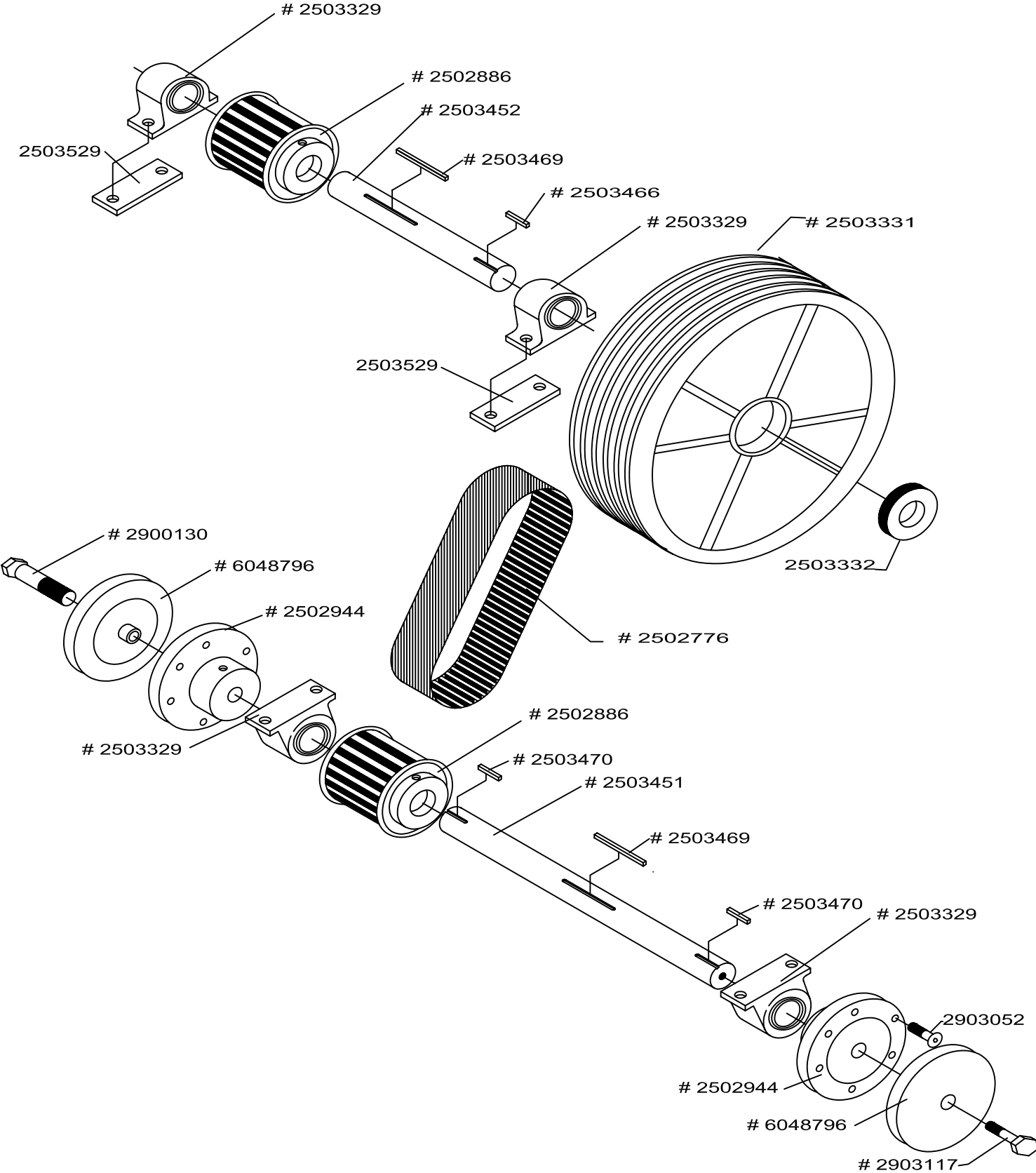


CC-DC-SS PARTS LIST

DRAWING # 4

Part Number	Description	Qty. Required
2502776	Belt	1
2502886	2 1/2" Sheave	2
2502944	Inner Collar	2
2503329	Blade Shaft Bearings	4
2503331	Sheave Jack Shaft 21"	1
2503332	Bushing for 21" Sheave	1
2503451	Blade Shaft	1
2503452	Jack Shaft 22 1/2" Long	1
2503466	Key	1
2503469	Key	2
2503470	Key	2
2503529	Bearing Spacer	2
2900130	5/8" - 11 x 4" Left Hand	1
2903052	Blade Mount Bolts	12
2903117	5/8" -11 x 4" Right Hand	1
6048796	Outer Collar	2

Drawing #4

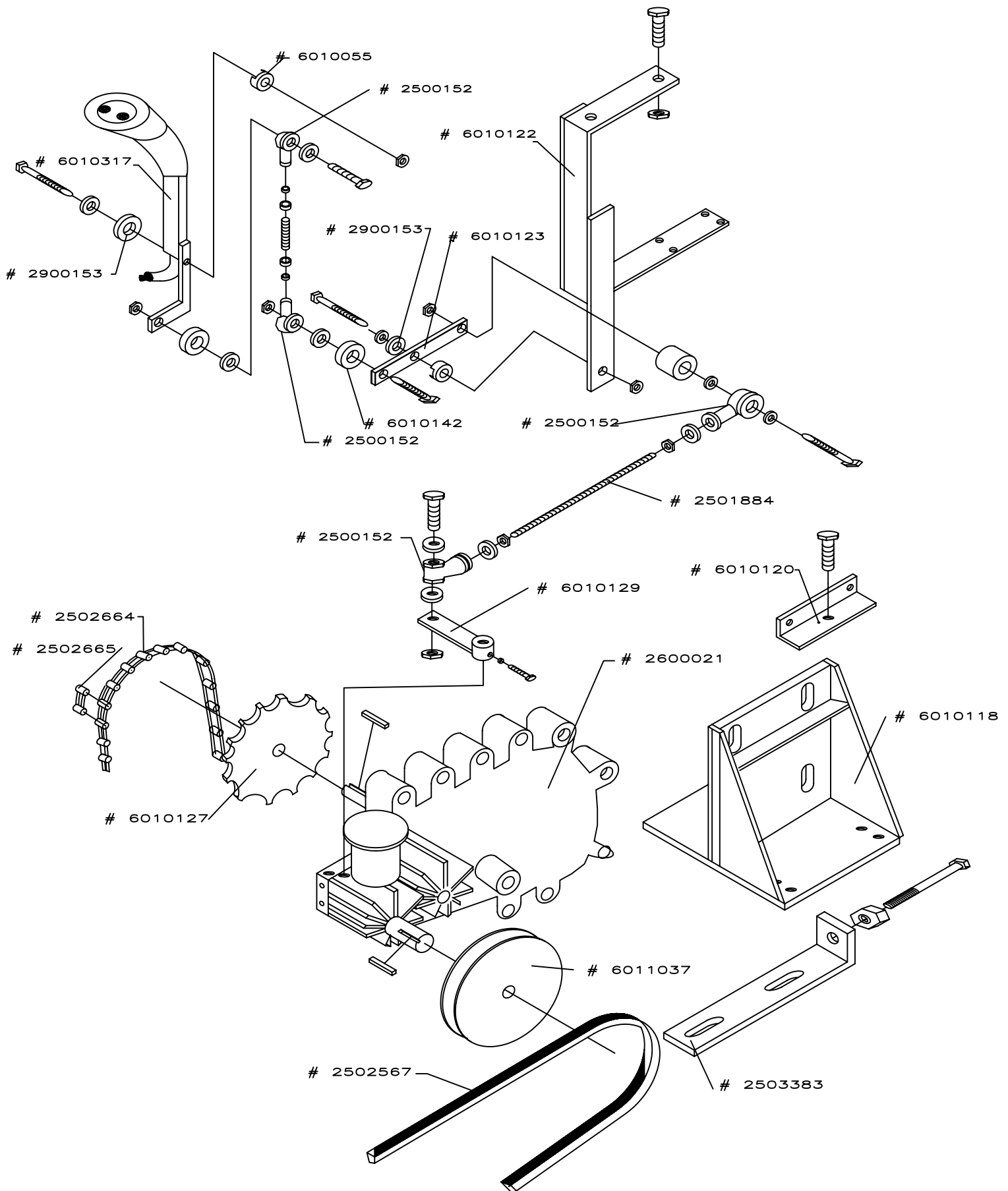


CC-DC-SS PARTS LIST

DRAWING # 5

Part Number	Description	Qty. Required
2500152	3/8" x 24 Rod Ends	4
2501884	3/8" Threaded Rod	1
2502567	Belt Transmission	1
2502664	Chain #50	1
2502665	#50 Master Link	1
2503383	Axle Adjuster	1
2600021	Transmission	1
2900153	3/8" Friction Washer	2
6010055	Friction Spacer	2
6010118	Transmission Mount Bracket	1
6010120	Chain Tightening Bracket	1
6010122	Lever Support / Weldment	1
6010123	Linkage Lever	1
6010127	Transmission Sprocket 19 Tooth	1
6010129	Shift Lever	1
6010142	1/2" Set Collars	2
6010317	F/R Lever	1
6011037	Transmission Pulley	1

Drawing #5

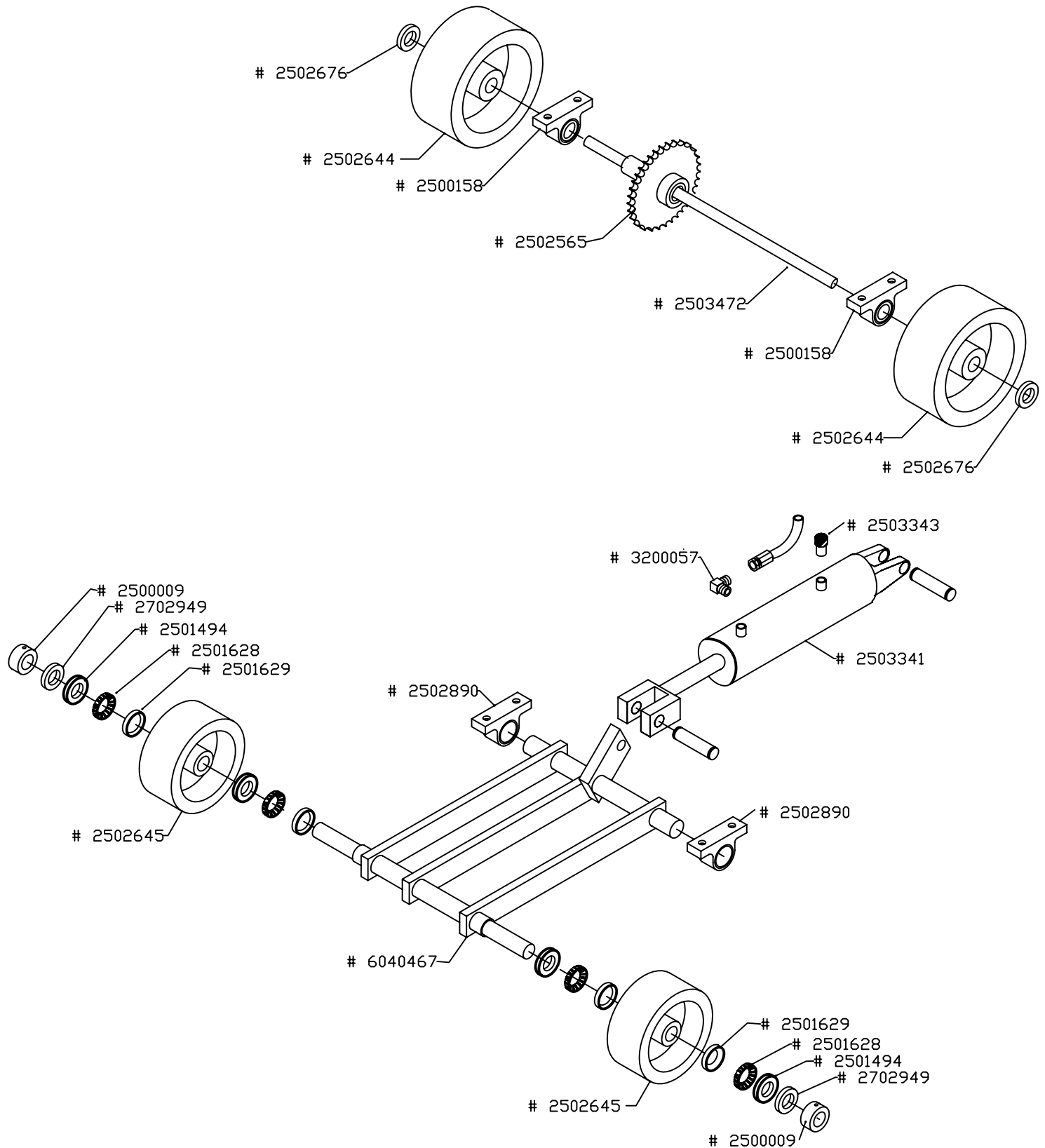


CC-DC-SS PARTS LIST

DRAWING # 6

Part Number	Description	Qty. Required
2500009	1" Set Collars	2
2500158	Bearing 1 1/4" Rear Axle	2
2501494	CR Seal	
2501628	Bearing	
2501629	Race	
2502565	Rear Axle Sprocket 1 1/4" Bore	1
2502644	12" Rear Wheels	2
2502645	10" Front Wheel Seals & Bearings	2
2502676	1 1/4" Torx Locks	2
2502890	Undercarriage Bearings	2
2503341	Cylinder (lift)	1
2503343	Vent	1
2503472	Rear Axle	1
2702949	Front Wheel Spacers	2
3200057	Elbow	
6040467	DC Undercarriage	1

Drawing #6

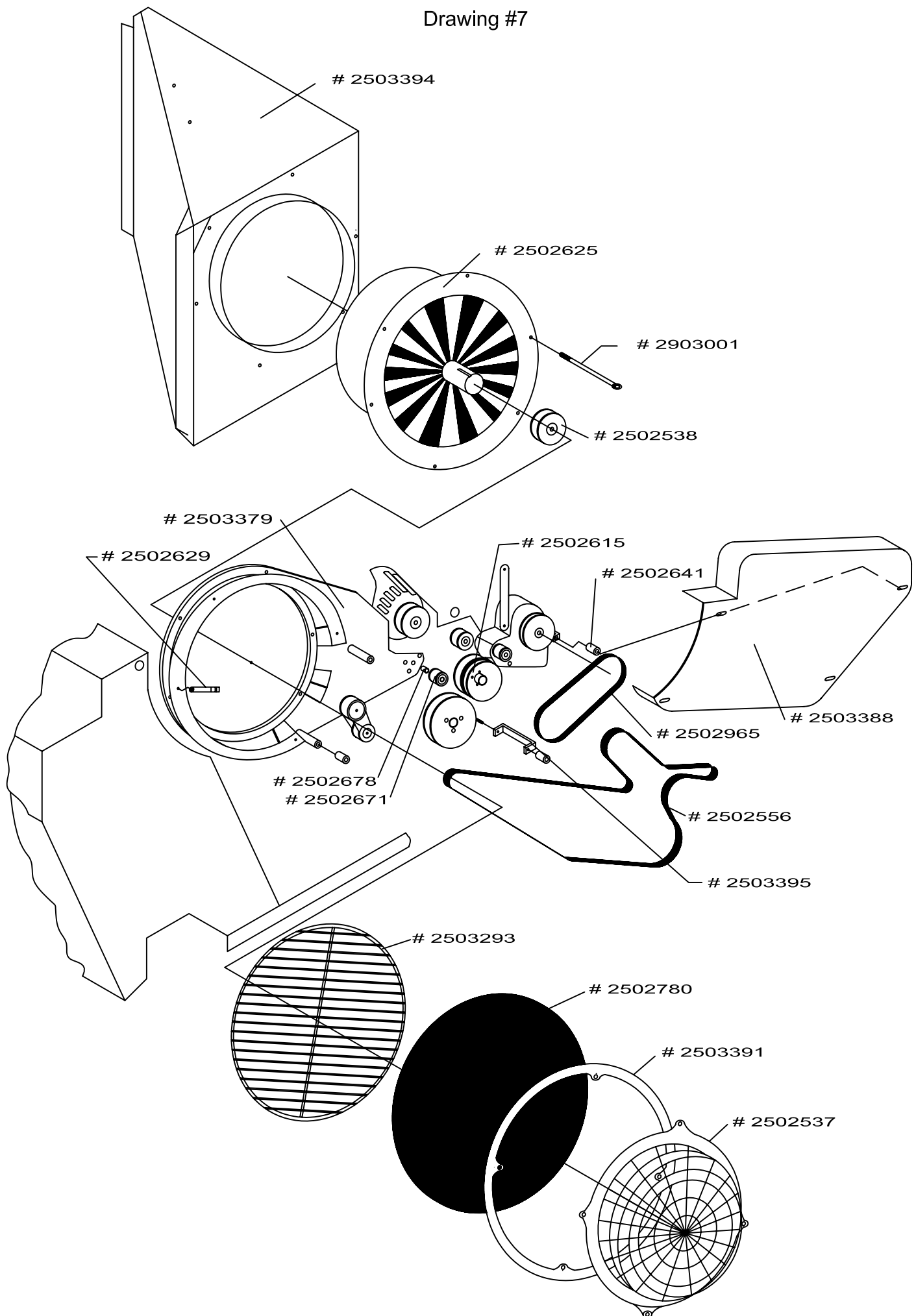


CC-DC-SS PARTS LIST

DRAWING # 7

Part Number	Description	Qty. Required
2502537	Fan Guard Plastic	1
2502538	Fan Pulley	1
2502556	Fan Belt	1
2502615	Pulley	1
2502625	Fan Assembly	1
2502629	Spring Clips	4
2502641	Isolators	4
2502671	Backside Idler Pulley Plastic	1
2502678	Bushing for Plastic Idler	1
2502780	Filter	1
2502965	Govenor Belt	1
2503293	Grill	1
2503379	Fan Mount	1
2503388	Engine Belt Guard	1
2503391	Air Filter Retaining Ring	1
2503394	Radiator Shroud	1
2503395	Engine Belt Guard Support	1
2903001	5/16" x 18 x 7" Bolts	6

Drawing #7

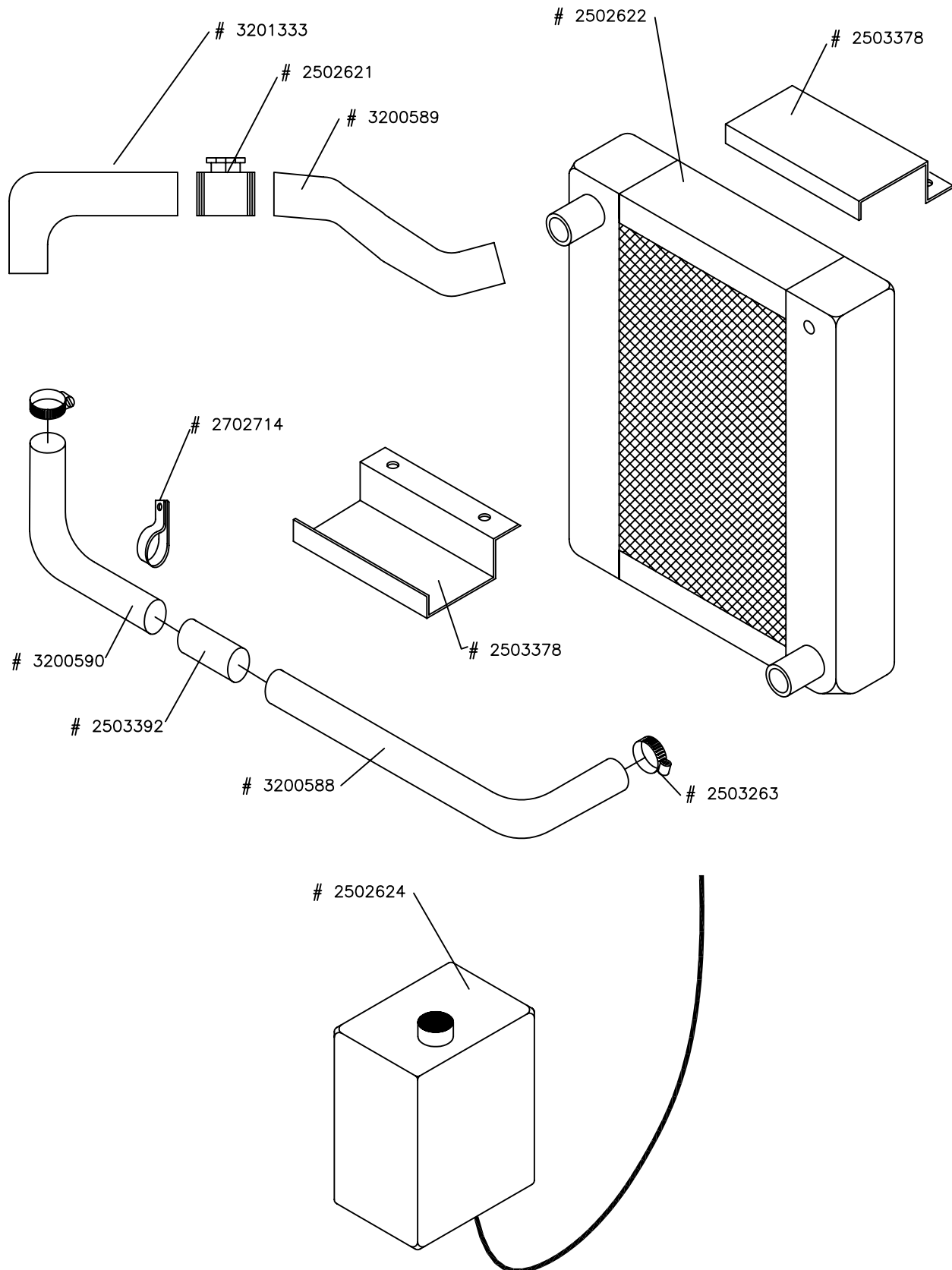


CC-DC-SS PARTS LIST

DRAWING # 8

Part Number	Description	Qty. Required
2502621	Radiator Fill	1
2502622	Radiator	1
2502624	Coolant Tank	1
2503263	2" Hose Clamps	8
2503378	Radiator Clamps	2
2503392	Hose Splice	1
2702714	Cushion Clamp	1
3200588	Lower Rad Hose	1
3200589	Upper Rad Hose	1
3200590	Lower Rad Hose	1
3201333	Upper Rad Hose	1

Drawing#8

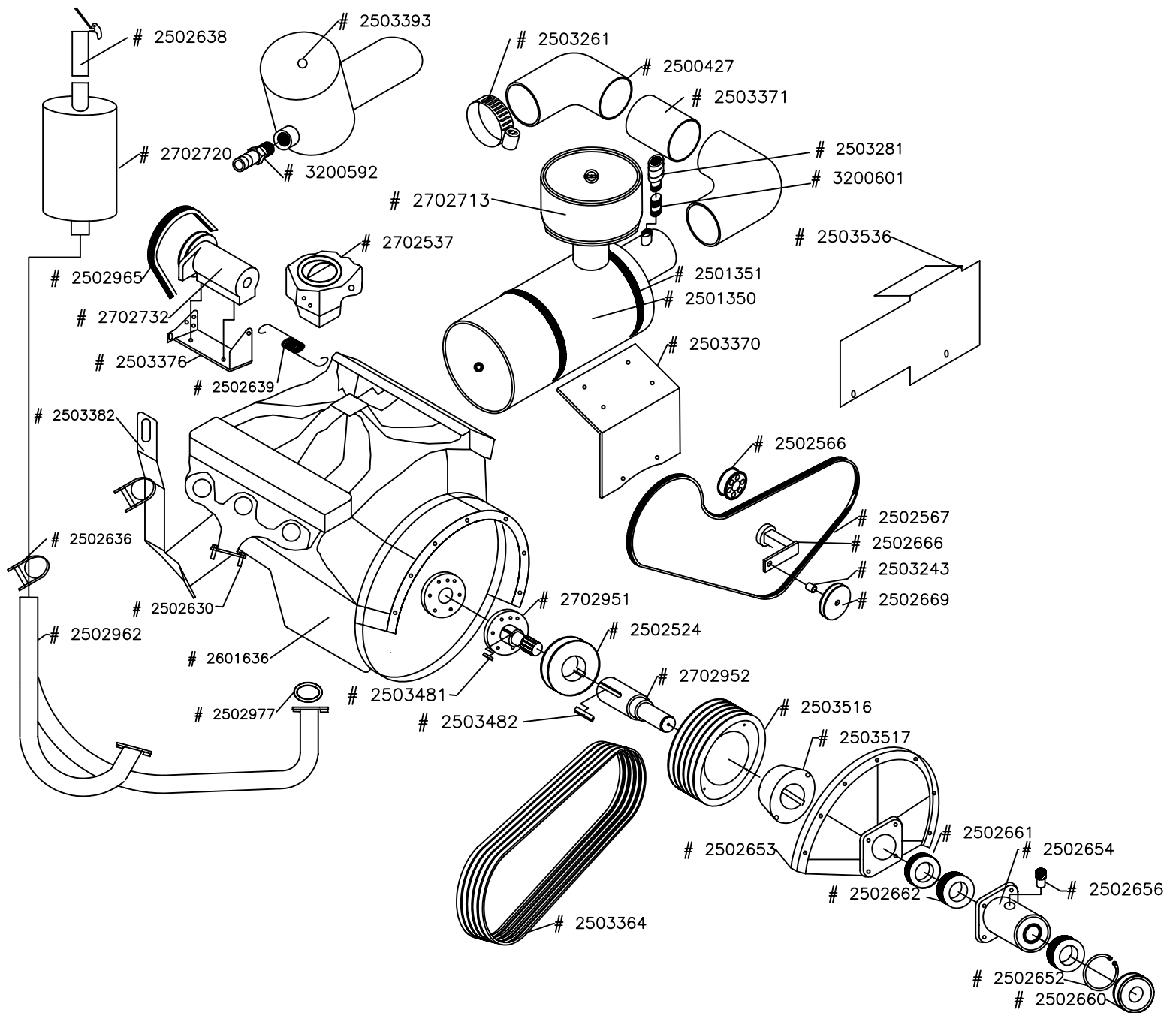


CC-DC-SS PARTS LIST

DRAWING # 9

Part Number	Description	Qty. Required
2500427	Rubber Intake Elbow	2
2501350	Air Cleaner	1
2501351	Plastic Mounting Band	2
2502524	Acc Drive Pulley	1
2502566	Backside Idler Pulley	1
2502567	Belt Transmission	1
2502630	Exhaust Studs	6
2502636	2 1/2" Muffler Clamps	2
2502638	Rain Cap	1
2502639	Choke Return Spring	1
2502652	Snap Ring	1
2502653	#3 Housing	1
2502654	Housing Load Center	1
2502656	3/8" Vent	1
2502660	Seal (Outer)	1
2502661	Seal (Inner)	1
2502662	Bearing Load Adapter	2
2502666	Tensioner SE-18	1
2502669	Idler Pulley	1
2502962	Y-Pipe	1
2502965	Govenor Belt	1
2502977	Exhaust Donuts	2
2503243	Bushing	1
2503261	4" Clamps	4
2503281	Restriction Indicator	1
2503364	Belts	5
2503370	Air Cleaner Mount Bracket	1
2503371	Air Intake Pipe	1
2503376	Govenor Mount Bracket	1
2503382	Engine Lift Hook	1
2503393	Carb Horn with Extension	1
2503481	Key	1
2503482	Key	1
2503516	Engine Sheave	1
2503517	Bushing	1
2503536	Transmission Belt Guard	1
2601636	4.3L GM Engine	1
2702537	Carburator	1
2702713	Pre Cleaner	1
2702720	Muffler	1
2702732	Mechanical Govenor	1
2702951	Male Spline Shaft	1
2702952	Female Spline Shaft	1
3200117	Close Nipple	
3200592	Hose Barb	

Drawing #9



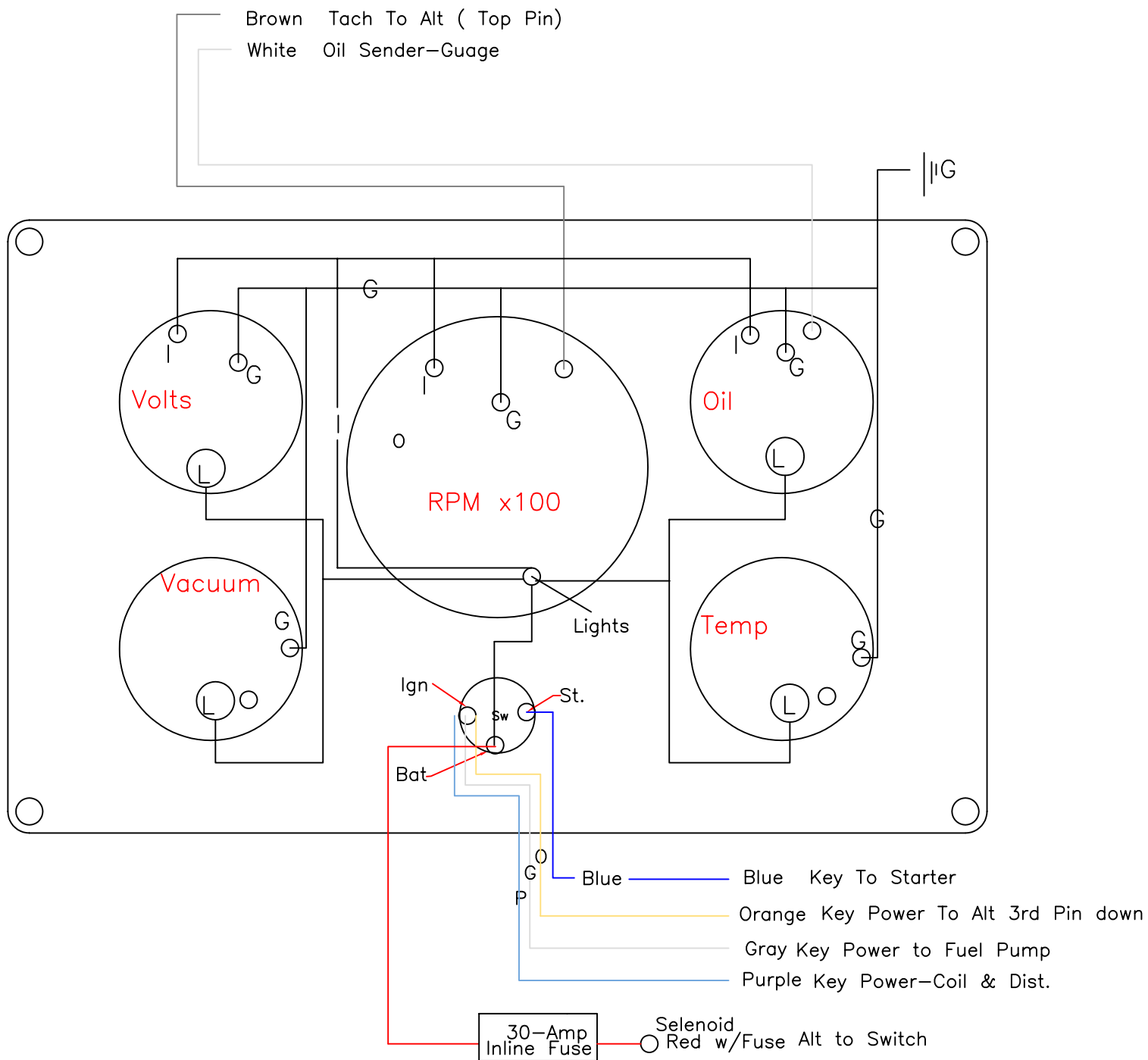
Drawing #10

Red Alt To Starter

View Of Back
Of Dash Panel

Brown Tach To Alt (Top Pin)

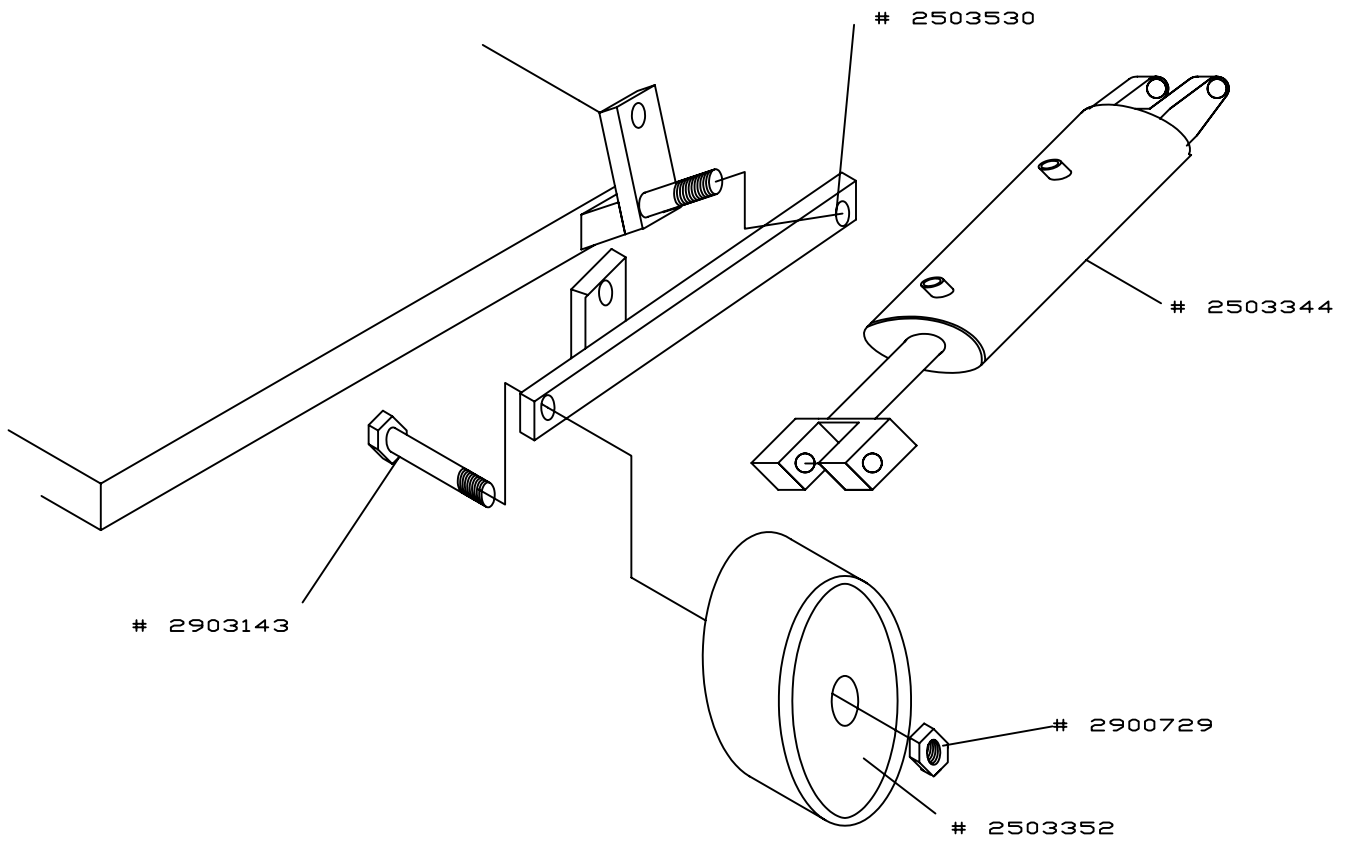
White Oil Sender—Guage



CC-DC-SS PARTS LIST DRAWING # 11

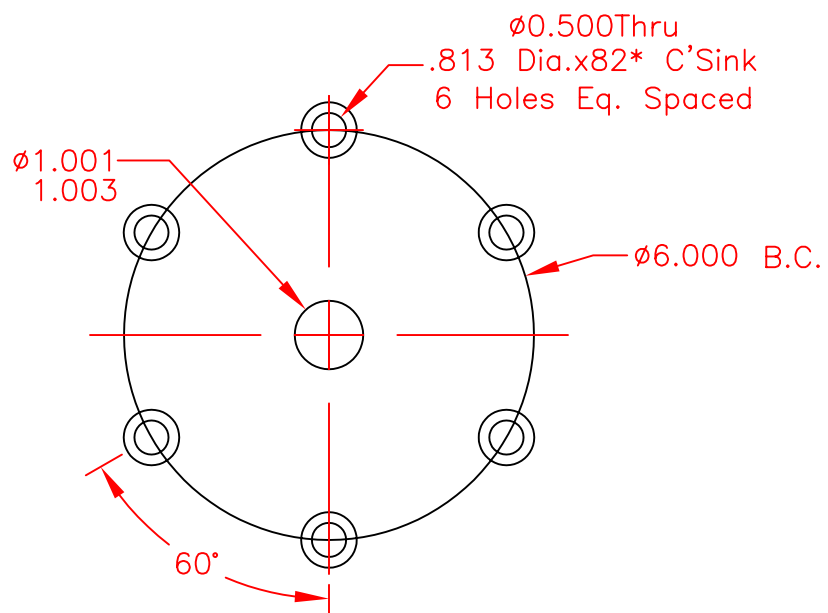
Part Number	Description	Qty. Required
2503344	Cylinder	1
2503352	Boggie Wheel	1
2503530	Boggie Wheel Weldment	1
2900729	3/4-10 Nut	1
2903143	3/4-10 x 4 1/2 Bolt	1

Drawing # 11



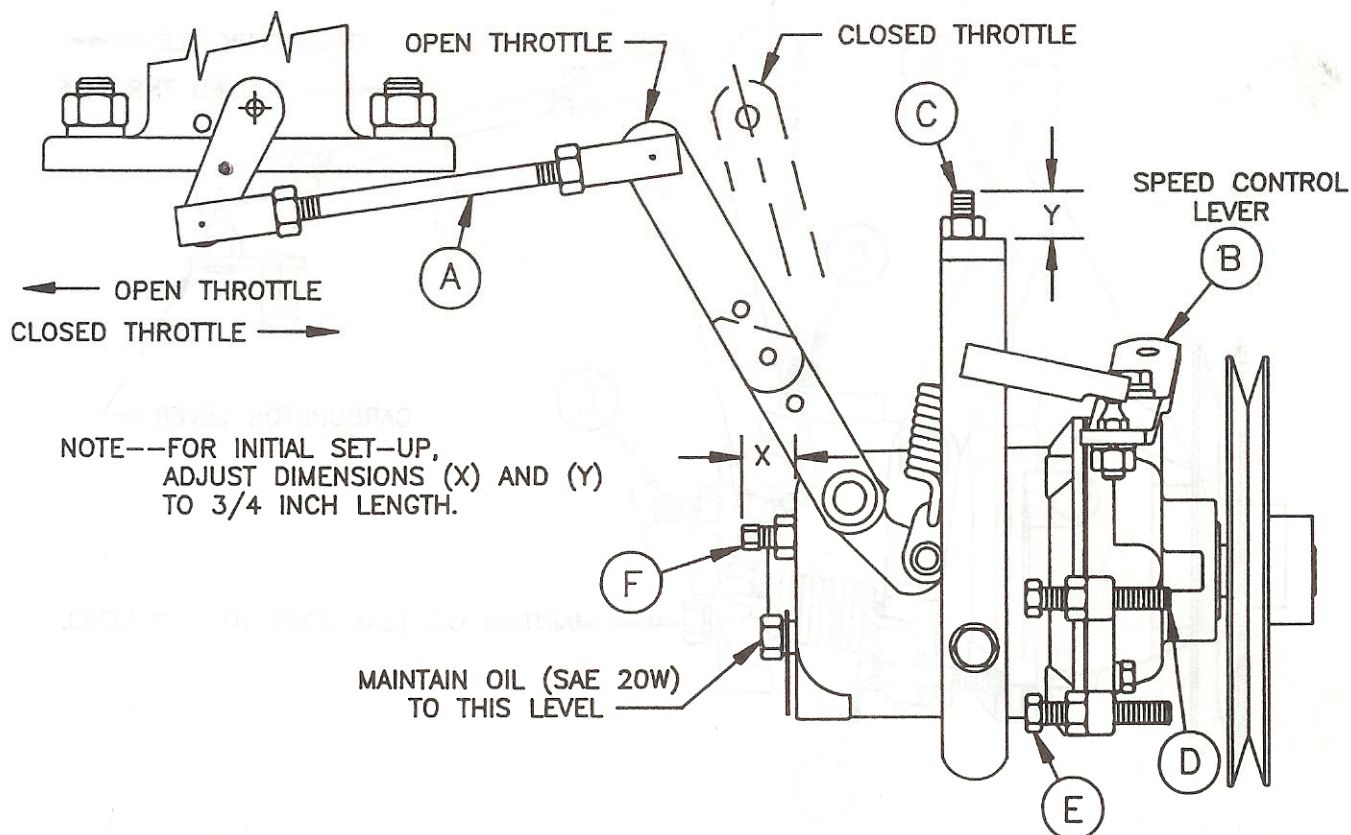
Drawing # 12

Blade Pattern



MECHANICAL GOVERNORS

ADJUSTING BD533F, **BD540B**, AND BD540J GOVERNORS



1. MOVE SPEED LEVER (B) TO PUT SPRING TENSION ON GOVERNOR AND ADJUST THROTTLE ROD (A) TO GIVE ABOUT 1/16 INCH CLEARANCE BETWEEN CARBURETOR LEVER AND WIDE-OPEN STOP ON CARBURETOR.
2. START ENGINE AND ALLOW TO WARM TO NORMAL OPERATING TEMPERATURE.
3. MOVE SPEED LEVER (B) TO INCREASE ENGINE SPEED TO DESIRED RANGE. IF DESIRED SPEED CANNOT BE REACHED, ADJUST SPRING TENSION WITH SCREW (C) TO INCREASE ENGINE SPEED.
4. CHECK ENGINE UNDER A LOAD. IF DROP IN SPEED BETWEEN LOAD AND NO-LOAD IS TOO MUCH, MOVE SPEED LEVER (B) IN DIRECTION TO DECREASE SPEED BY ABOUT 100 RPM, RE-ADJUST SPRING AT SCREW (C) TO GET DESIRED SPEED, AND RECHECK ENGINE UNDER A LOAD. REPEAT THIS PROCEDURE AS REQUIRED UNTIL DESIRED SPEED AND REGULATION IS REACHED.
5. TO STABILIZE THE ENGINE, OR TO INCREASE THE DROP IN SPEED BETWEEN LOAD AND NO-LOAD, MOVE SPEED LEVER (B) IN DIRECTION TO INCREASE SPEED BY ABOUT 100 RPM, AND ADJUST SPEED WITH SCREW (C) BACK TO DESIRED RANGE. CHECK ENGINE UNDER A LOAD, AND REPEAT THIS PROCEDURE AS REQUIRED UNTIL ENGINE IS STABILIZED.
6. ADJUST HIGH-SPEED STOP SCREW (D) AND CONSTANT SPEED STOP SCREW (E) AS REQUIRED.
7. IF THE ENGINE HUNTS AT MAXIMUM SPEED, NO-LOAD CONDITION, TURN SURGE SCREW (F) CLOCKWISE UNTIL THE HUNTING JUST STOPS AND TIGHTEN LOCKNUT.
CAUTION — DO NOT TURN SCREW (F) IN FAR ENOUGH TO INCREASE ENGINE SPEED.

EQUIPMENT AND PARTS WARRANTY

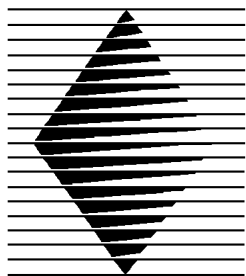
Diamond Products warrants all equipment manufactured by it against defects in workmanship or materials for a period of one (1) year from the date of shipment to Customer.

The responsibility of Diamond Products under this Warranty is limited to replacement or repair of defective parts at Diamond Products' Elyria, Ohio factory, or at a point designated by it, of such parts as shall appear to us upon inspection at such parts, to have been defective in material or workmanship, with expense for transportation and labor borne by Customer.

In no event shall Diamond Products be liable for consequential or incidental damages arising out of the failure of any Product to operate properly.

Integral units such as engines, electric motors, batteries, transmissions, etc., are excluded from this Warranty and are subject to the prime manufacturer's warranty.

THIS WARRANTY IS IN LIEU OF ALL OTHER WARRANTIES, EXPRESSED OR IMPLIED, AND ALL SUCH OTHER WARRANTIES ARE HEREBY DISCLAIMED.



**DIAMOND
PRODUCTS**

333 Prospect Street, Elyria, Ohio 44035
(440) 323-4616 • (800) 321-5336 • Fax (440) 323-8689

www.diamondproducts.com