

PARTS AND OPERATION MANUAL



Mikasa

Model MT-70H

© COPYRIGHT 2001, MULTIQUIP INC.

Revision #5 (03/01/01)



MULTIQUIP INC.

18910 WILMINGTON AVE.
CARSON, CALIFORNIA 90746
310-537-3700
800-421-1244
FAX: 310-537-3927

E-mail: mq@multiquip.com • **www:** www.multiquip.com

Atlanta • Boise • Dallas • Houston • Newark
Montreal, Canada • Manchester, UK
Rio De Janeiro, Brazil • Guadalajara, Mexico

PARTS DEPARTMENT:

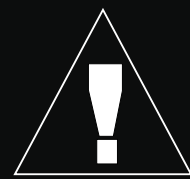
800-427-1244
FAX: 800-672-7877

SERVICE DEPARTMENT/TECHNICAL ASSISTANCE:

800-478-1244
FAX: 310-631-5032



WARNING



CALIFORNIA — Proposition 65 Warning

Engine exhaust and some of its constituents are known to the State of California to cause cancer, birth defects and other reproductive harm.

HERE'S HOW TO GET HELP

*PLEASE HAVE THE MODEL AND SERIAL NUMBER
ON-HAND WHEN CALLING*

PARTS DEPARTMENT

800-427-1244 or 310-537-3700

FAX: 800-672-7877 or 310-637-3284

SERVICE DEPARTMENT/TECHNICAL ASSISTANCE

800-478-1244 or 310-537-3700

FAX: 310- 537-4259

WARRANTY DEPARTMENT

888-661-4279, or 310-661-4279

FAX: 310- 537-1173

MAIN

800-421-1244 or 310-537-3700

FAX: 310-537-3927

TABLE OF CONTENTS

Here's How To Get Help	3
Table Of Contents	4
Parts Ordering Procedures	5
Rules For safe Operation	6-7
Operation and Safety Decals	8
General Information	9

MT-70H

Specification	10
Controls and Components	11
Operation	12-13
Maintenance	14
Troubleshooting Guide	15-16
Explanation Of Codes In Remarks Column	18
Suggested Spare Parts	19
Crankcase and Engine	20-21
Guide Cylinder and Foot	22-23
Tank and Handle 1	24-25
Tank and Handle 2	26-27

EC-10GH ROBIN ENGINE

Crankcase and Cylinder	28-29
Crankshaft and Piston	30-31
Governor	32-33
Blower Housing & Muffler	34-35
Carburetor & Air Cleaner	36-37
Magneto (T.C.I).	38-39
Recoil Starter	40-41

Terms and Condition Of Sale — Parts	42
---	----

NOTE

*Specification and part number
are subject to change without
notice.*

PARTS ORDERING PROCEDURES

- Dealer account number
- Dealer name and address
- Shipping address (if different than billing address)
- Return fax number
- Applicable model number
- Quantity, part number and description of each part
- Specify preferred method of shipment:
 - UPS Ground
 - UPS Second Day or Third Day*
 - UPS Next Day*
 - Federal Express Priority One (please provide us with your Federal Express account number)*
 - Airborne Express*
 - Truck or parcel post

**Normally shipped the same day the order is received, if prior to 2PM west coast time.*

Earn Extra Discounts when you order by FAX!

All parts orders which include complete part numbers and are received by fax qualify for the following extra discounts:

<u>Number of line items ordered</u>	<u>Additional Discount</u>
1-9 items	3%
10+ items**	5%

Get special freight allowances when you order 10 or more line items via FAX! **

- UPS Ground Service at no charge for freight
- PS Third Day Service at one-half of actual freight cost

No other allowances on freight shipped by any other carrier.

**Common nuts, bolts and washers (all items under \$1.00 list price) do not count towards the 10+ line items.

DISCOUNTS ARE SUBJECT TO CHANGE

Fax order discount and UPS special programs revised June 1, 1995

**Extra Fax Discount
for Domestic USA
Dealers Only**

**Up to 5%
extra savings!**

**UPS
Special**
For faxed orders only

**Now! Direct TOLL-FREE access
to our Parts Department!**

Toll-free nationwide:

800-421-1244

Toll-free FAX:

800/6-PARTS-7 • 800-672-7877

RULES FOR SAFE OPERATION

CAUTION:



Failure to follow instructions in this manual may lead to serious injury or even death! This equipment is to be operated by trained and qualified personnel only! This equipment is for industrial use only.

The following safety guidelines should always be used when operating the MT-70H Tamping Rammer:

GENERAL SAFETY

- **DO NOT** operate or service this equipment before reading this entire manual.



- This equipment should not be operated by persons under 18 years of age.

- **NEVER** operate this equipment without proper protective clothing, shatterproof glasses, steel-toed boots and other protective devices required by the job.



- **NEVER** operate this equipment when not feeling well due to fatigue, illness or taking medicine.



- **NEVER** operate this equipment under the influence of drugs or alcohol.



- **NEVER** use accessories or attachments, which are not recommended by Multiquip for this equipment. Damage to the equipment and/or injury to user may result.

- Manufacture does not assume responsibility for any accident due to equipment modifications.

- Whenever necessary, replace nameplate, operation and safety decals when they become difficult to read.

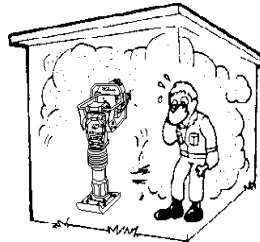
- Always check the machine for loosened threads or bolts before starting.

- **NEVER** touch the hot exhaust manifold, muffler or cylinder. Allow these parts to cool before servicing engine or rammer.



- **High Temperatures** – Allow the engine to cool before adding fuel or performing service and maintenance functions. Contact with *hot* components can cause serious

- The engine section of this rammer requires an adequate free flow of cooling air. Never operate the rammer in any enclosed or narrow area where free flow of the air is restricted. If the air flow is restricted it will cause serious damage to the rammer or engine and may cause injury to people. Remember the rammer's engine gives off DEADLY carbon monoxide gas.



- Always refuel in a well-ventilated area, away from sparks and open flames.



- Always use extreme caution when working with **flammable** liquids. When refueling, **stop the engine** and allow it to cool. **DO NOT smoke** around or near the machine. Fire or explosion could result from fuel vapors, or if fuel is spilled on a hot engine.

- **NEVER** operate the rammer in an explosive atmosphere or near combustible materials. An explosion or fire could result causing severe *bodily harm or even death*.

RULES FOR SAFE OPERATION

- **NEVER** Run engine without air filter. Severe engine may occur.
- Always service air cleaner frequently to prevent carburetor malfunction.
- Always be sure the operator is familiar with proper safety precautions and operations techniques before using rammer.
- Always store equipment properly when it is not being used. Equipment should be stored in a clean, dry location out of the reach of children.
- **NEVER** use accessories or attachments, which are not recommended by Multiquip for this equipment. Damage to the equipment and/or injury to user may result.
- **NEVER** Run engine without air cleaner. Severe engine damage may occur.
- Always read, understand, and follow procedures in Operator's Manual before attempting to operate equipment.
- Always be sure the operator is familiar with proper safety precautions and operations techniques before using pump.
- Always store equipment properly when it is not being used. Equipment should be stored in a clean, dry location out of the reach of children.
- Refer to the **ROBIN Engine Owner's Manual** for engine technical questions or information recommended by Multiquip for this equipment. Damage to the equipment and/or injury to user may result.

Transporting

- Always shutdown engine before transporting.
- Tighten fuel tank cap securely and close fuel cock to prevent fuel from spilling.
- Drain fuel when transporting rammer over long distances or bad roads.
- When placing the rammer inside a truck-bed for transport, always tie-down the rammer.

Emergencies

- Always know the location of the nearest **fire extinguisher** and **first aid kit**. Know the location of the nearest telephone. Also know the phone numbers of the nearest **ambulance**, **doctor** and **fire department**. This information will be invaluable in the case of an emergency.

Maintenance Safety

- **NEVER** lubricate components or attempt service on a running machine.
- Always allow the machine a proper amount of time to cool before servicing.
- Keep the machinery in proper running condition.
- Fix damage to the machine immediately and always replace broken parts.
- Dispose of hazardous waste properly. Examples of potentially hazardous waste are used motor oil, fuel and fuel filters.
- **DO NOT** use plastic containers to dispose of hazardous waste.

OPERATION AND SAFETY DECALS

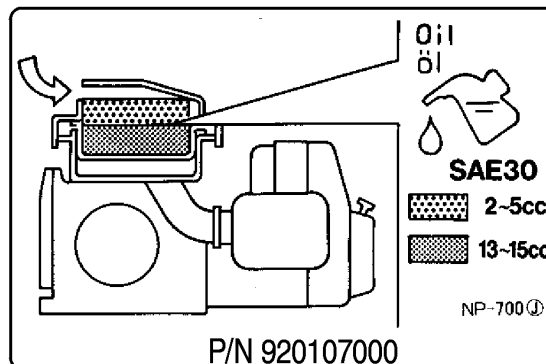
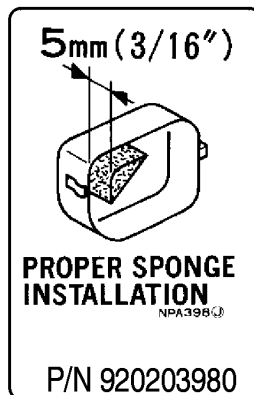
Mikasa

P/N 920106460

First, remove the element from the pre-cleaner located at the top of the machine. Clean the element with solvent. Apply SAE-30 motor oil as follows: top element (yellow) with 2 to 5 cc and the bottom element (gray) with 13 to 15 cc. Be sure to squeeze out excess oil before reinstalling.

NPA 437 ①

P/N 920204370



When you stop the engine, be sure to close the fuel cock.
NPA-399 ①

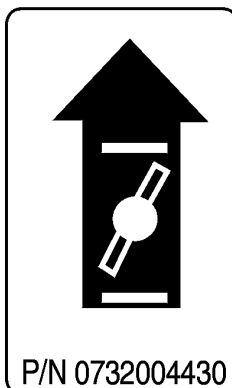
P/N 920203990

CAUTION !

- READ OWNER'S SERVICE MANUAL BEFORE OPERATING OR SERVICING THIS MACHINE.
- ALWAYS KEEP UNAUTHORIZED, INEXPERIENCED, UNTRAINED PEOPLE AWAY FROM THIS MACHINE.
- MAKE SURE ALL SAFETY DEVICES ARE OPERATIONAL BEFORE THIS MACHINE IS STARTED. MAKE SURE ENGINE IS TURNED OFF AND SPARK PLUG WIRE DISCONNECTED BEFORE SERVICING THE MACHINE OR COMING IN CONTACT WITH ANY MOVING PART. IF EQUIPMENT IS POWERED BY AN ELECTRIC MOTOR, DISCONNECT ELECTRICAL PLUG.
- NEVER LEAVE MACHINE UNATTENDED WHEN OPERATING. ALWAYS STOP ENGINE AND ALLOW ENGINE TO COOL BEFORE ADDING FUEL OR OIL.

NPA-329 ①

P/N 920203290



エアクリーナ取扱注意	NOTICE
エレメントが汚れた時は白灯油で洗浄し、洗浄後は混合油(白灯油2~4:エンジンオイル1)の中に浸し、点滴しない程度によく振り切って乾かして下さい。但しホコリの多い場所では早めに清掃して下さい。	CLEAN THE ELEMENT WITH KEROSENE WHEN DIRTY. AFTER THE CLEANING, LUBRICATE IT MIXED OIL (KEROSENE 2~4: ENGINE OIL 1), SQUEEZE OUT THE OIL, AND REPLACE IT, AND CLEAN IT MORE OFTEN WHEN OPERATING IN DUSTY CONDITIONS.
TOKYO KOUKENSHA CO., LTD. JAPAN	
P/N 1073273308	

Definition of Tamping Rammer

The Mikasa MT-70H tamping rammer is a powerful compacting tool capable of applying a tremendous force in consecutive impacts to a soil surface. Its applications include soil compacting for road, embankments and reservoirs as well as backfilling for gas pipelines, water pipelines and cable installation work.

The impact force of the MT-70H levels and uniformly compacts voids between soil particles to increase dry density.

Circular motion is converted to create impact force. The MT-70 H tamping rammer develops a powerful compacting force at the foot of the rammer. To maintain optimum performance, proper operation and service are essential.

Construction of Tamping Rammer

The Mikasa MT-70H is equipped with an air cooled, two cycle gasoline engine. Transmission of the power takes place by increasing the engine speed to engage the centrifugal clutch.

Rammer Gearbox and Spring Cylinder

The Mikasa MT-70H uses an oil bath lubrication system. Always check the oil level through the oil level sight glass at the rear of the tamping foot.

Controls

Before starting the MT-70H Tamping Rammer identify and understand the function of the controls, see Figure 1 on the preceding page.

Table 1. MT-70H Rammer Specifications

MODEL	MT-70H U.S. (metric)
Overall Height	40.1 in. (1,020 mm)
Overall Width	16.1 in (410 mm)
Over Length	28.3 in (720 mm)
Shoe Size	11.2 in. x 13.4 (285 mm x 340 mm)
Blows/minute	660
Impact Force	2,800 lbs./blow (1,270 kg/blow)
Impact Stroke	3.35 in. (85 mm)
Operating Weight	157 lbs. (65 kg)

Table 2. MT-70H Engine Specifications

MODEL	Robin EC10-G
Type	Air-Cooled 2 Stroke Gasoline Engine
Piston Displacement	6.00 cu.in. (98 cc)
Max. Output	4.0 hp/4,000 rpm (3.0 KW)
Max. Governed Speed, No Load	3,900 rpm
Cooling System	Air-Cooled
Lubrication System	Fuel-Lubrication Oil Spraying System
Fuel	Unleaded gasoline 25:1 (oil)
Starting System	Recoil Starter

NOTE

Specifications are general and are subject to change without notice. If exact measurements are required, equipment should be weighed and measured.

MT-70H — CONTROLS AND COMPONENTS

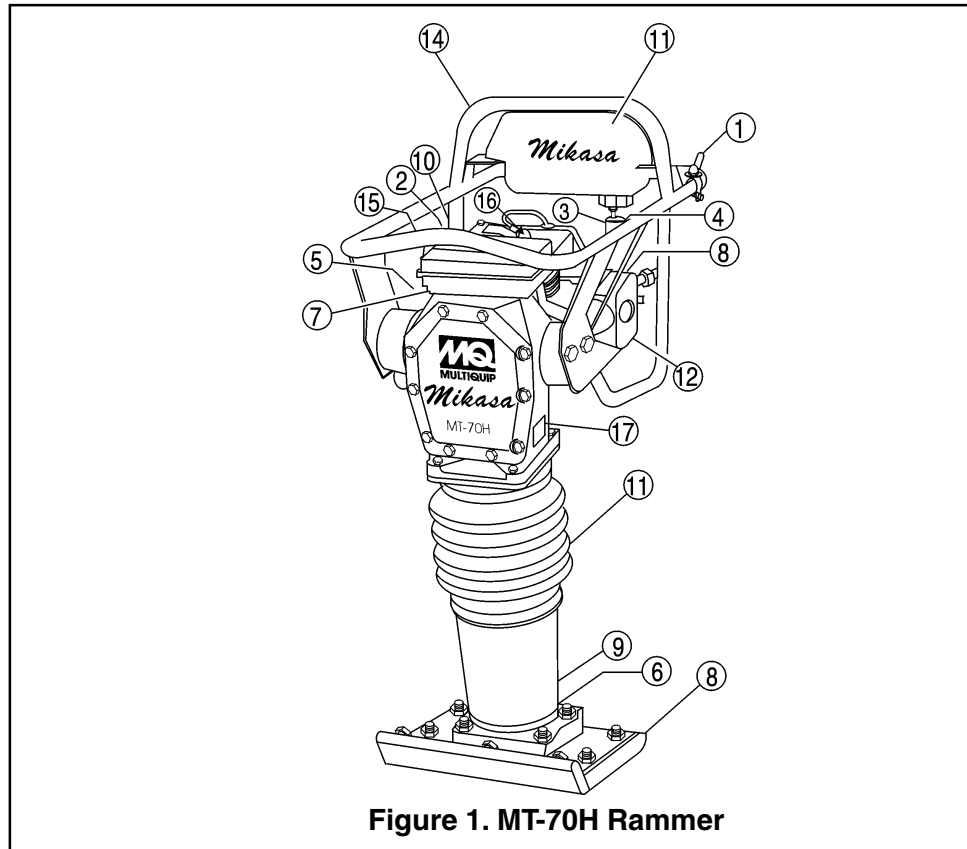


Figure 1. MT-70H Rammer

Figure 1 shows the location of the controls and components for the MT-70H Tamping Rammer. The functions of each control is described below:

1. **Throttle Lever** – Controls engine speed and the tamping action of the rammer.
2. **Engine Stop Switch** – Controls the starting and stopping of the engine. Switch must be in the "ON" position when starting the engine.
3. **Choke Lever** – Used when starting the engine. Normally used in cold weather conditions. In cold weather turn the choke lever to the fully closed position, in warm weather set choke lever half way or completely open.
4. **Fuel Shut-Off Valve** – Supplies fuel from the fuel tank to the engine. To begin fuel flow move the fuel shut-off valve downward.
5. **Excess Fuel Drain Valve** – Open drain plug when excess fuel is present in the carburetor, or crankcase.
6. **Drain Valve** – Open this valve to remove oil from the bellows.
7. **Air Cleaner** – Pre-cleans (first stage) dirt and other debris from entering the engine.
8. **Foot** – Laminated wood with tempered steel plate for superior shock absorption.
9. **Oil Level Sight Glass** – Indicates the level of oil in the oil bath reservoir.
10. **Recoil Starting Handle** – Used when starting the engine. Pull starter handle sharply and quickly, then return starter handle to starter case before releasing.
11. **Fuel Tank/Cap** – Poly fuel tank to avoid rust and corrosion, remove this cap to add gasoline.
12. **Air Cleaner** – Prevents dirt (second stage) and other debris from entering the engine.
13. **Bellows** – Reservoir for oil bath.
14. **Handle** – To operate rammer **GRIP** handle assembly firmly on both sides.
15. **Muffler** – Used to reduce noise and emissions.
16. **Spark Plug** – Provides spark to the ignition system, replace with engine manufactures recommended type spark plug.
17. **Nameplate** – Displays information regarding the rammer.

This section is intended to assist the operator with the initial start-up of the MT-70H Tamping Rammer. It is extremely important that this section be read carefully before attempting to operate the rammer.

DO NOT use your rammer until this section is thoroughly understood.

CAUTION:



Failure to understand the operation of the MT-70H Tamping Rammer could result in severe damage to the trowel or personal injury.

Rammer Gearbox and Spring Cylinder Oil Bath

This unit uses an oil bath lubrication system. Perform the following:

1. Check the oil level through the oil level sight glass at the rear of the tamping foot.
2. If oil is not visible, add 10W-30 motor oil. The bath contains approximately 1.7 pints (800 cc.)

NOTE

The oil level should be kept at the half way point of the sight glass.

Engine

Before pouring fuel into the fuel tank (Figure 2) perform the following:

1. Find a container for the mixing of fuel and gasoline.
2. Use a quality outboard motor oil for 2-cycle engines.
3. Mix gasoline (unleaded) with oil at a 25:1 ratio. Mix well.
4. Be sure to filter the mixed fuel with a strainer at the filler port.
5. If fuel spills on the fuel cap when operating rammer, replace the rubber leak stopper inside the cap.

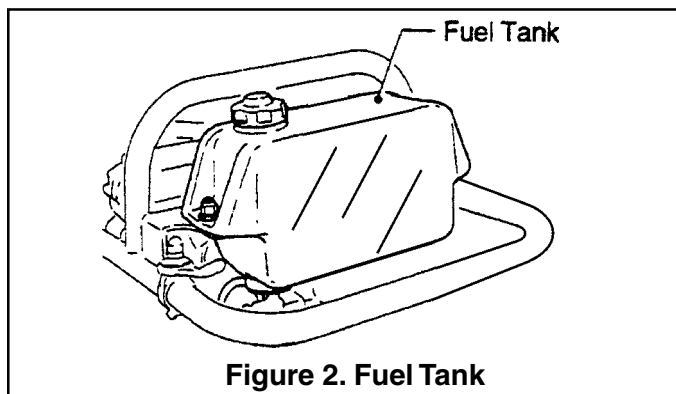


Figure 2. Fuel Tank

Inspection

1. Check all nuts, bolts fasteners for tightness. Retighten as necessary.
2. Clean any dirt from the recoil starter and foot pedestal. Wipe the entire unit clean before operating.
3. Replace any missing or damaged Safety Operation decals.
4. Adjust height of handle. Adjust handle by loosening nuts and moving handle to suit operation. Retighten nuts.

Initial Start-up

When starting the MT-70H Tamping Rammer perform the following:

1. Open the shut-off valve by moving the strainer lever downward (Figure 3), then set the engine start/stop switch (Figure 4) to the "START" position.

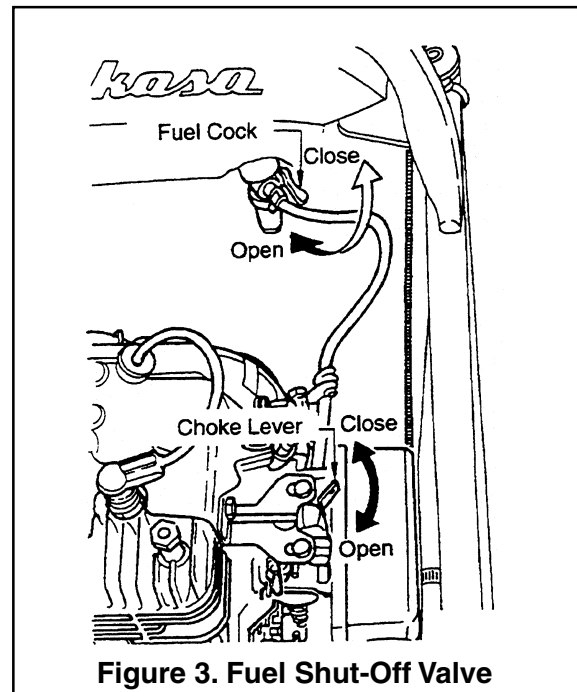


Figure 3. Fuel Shut-Off Valve

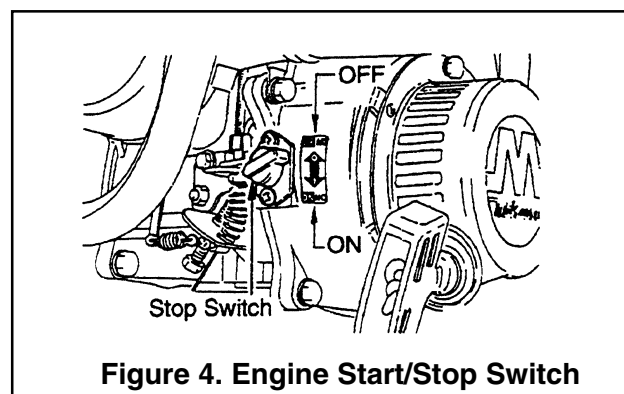
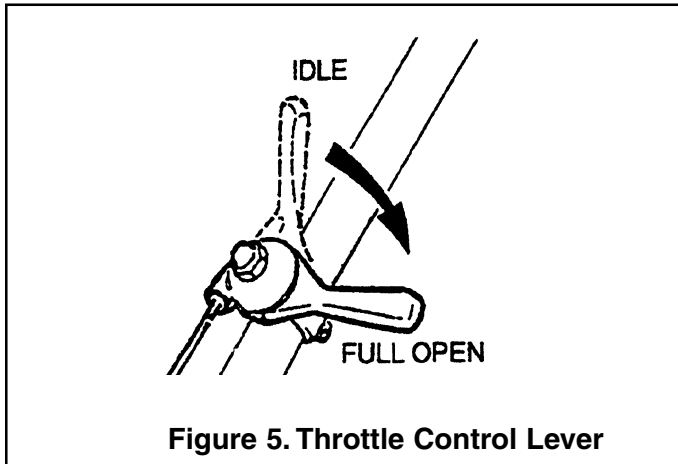
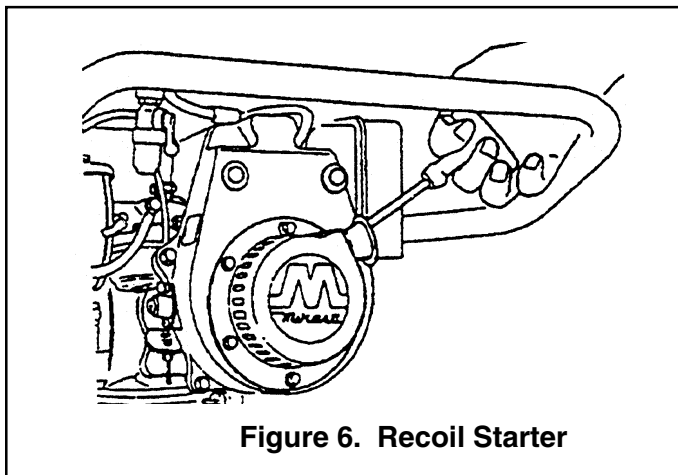


Figure 4. Engine Start/Stop Switch

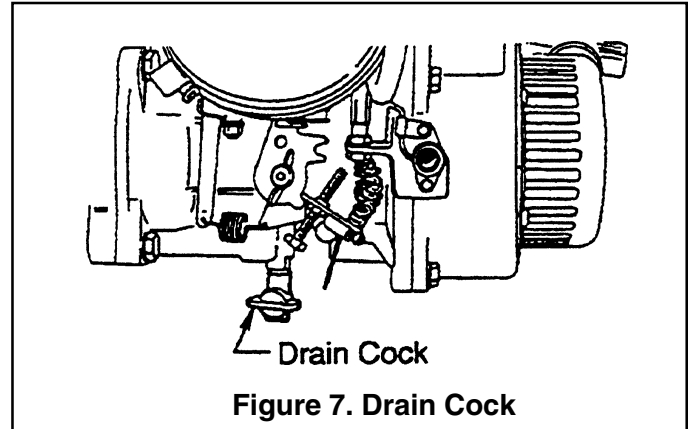
2. Close the choke lever Figure 3 and move the throttle lever to the "**Full Open**" position. Turning the choke lever 90 degrees clockwise closes the choke. In cold weather, start the unit with choke fully closed. In warm weather or when the engine is warm, the unit can be started with choke halfway or completely open.



3. Grip the recoil starter (Figure 6) handle and pull it until you feel a slight resistance. Then pull sharply and quickly. Return the recoil starter handle to the starter case before releasing.



4. If engine fails to start, move the choke lever (Figure 3) to the half open position to avoid flooding.
5. Repeat steps 1 thru 4.
6. If the engine does not start after repeated attempts, check the spark plug for excess fuel. Clean and replace the spark plug as needed.
7. If the carburetor is flooded or the crankcase is loaded with fuel, open the drain plug as shown in Figure 7 and drain excess fuel.



Operation

1. To start the rammer tamping action, move the throttle lever quickly from **IDLE** to the **FULL OPEN** position (Figure 5). **DO NOT** move the throttle lever slowly as this may cause damage to the clutch or spring.

CAUTION:



Make sure that the throttle lever is moved to the **FULL OPEN** position. Operating the rammer at less than full speeds can result in damage to the clutch springs or foot

2. The MT-70H Tamping rammer is designed to run at 3,900 rpm. At optimum rpm the foot hits at the rate of 660 impacts per minute. Increasing throttle speed past factory set rpm does not increase impacts and may damage unit. The MT-70H is designed to advance while tamping. For faster advance, pull back slightly on the handle so that rear of foot contacts soil first.
3. To stop the tamping action, move throttle lever quickly from the **FULL OPEN** to **IDLE** position.

Stopping The Engine

Normal Shutdown

1. Move throttle lever quickly from the **FULL OPEN** to **IDLE** position (Figure 5) and run the engine for three minutes at low speed. After the engine **cools**, turn the engine start/stop switch to the "**STOP**" position (Figure 4) until engine comes to a complete stop.
2. Close the fuel shut-off valve by moving the strainer lever upward. See Figure 3.

Emergency Shutdown

2. Move the throttle lever quickly to the **IDLE** position, and turn the engine start/stop switch to the **STOP** position.

Maintenance

Perform the scheduled maintenance procedures as indicated:

DAILY

- Thoroughly remove dirt and oil from the engine and control area. Clean or replace the air cleaner elements as necessary. Check and retighten all fasteners as necessary. Check the spring box and bellows for oil leaks. Repair or replace as needed.

WEEKLY

- Remove the fuel filter cap and clean the inside of the fuel tank.
- Remove or clean the filter at the bottom of the tank.
- Remove and clean the spark plug, then adjust the spark gap to .028~.031 inch (0.7~0.8 mm). This unit has electronic ignition, which requires no adjustments.
- Clean air cleaner cover.

200 - 300 HOURS (Air Cleaner Figure 8)

- Remove the element from the pre-cleaner at the top of the crankcase (body side) and clean it with cleaning oil (kerosene).
- Lubricate the top element (yellow) with 2~5cc of engine oil SAE-30.
- Lubricate bottom element (gray) with 13~15cc of engine oil SAE-30 and completely squeeze out the excess oil before from the element before installing.

- The air cleaner on the engine side will hardly be contaminated, if it is, however after cleaning the element with kerosene, dip it in mixed oil consisting of 3 parts of gasoline and 1 part of engine oil. Then tightly squeeze outer primary element (sponge) and shake off well the inner secondary element before installing them.

200 - 300 HOURS (Oil Bath)

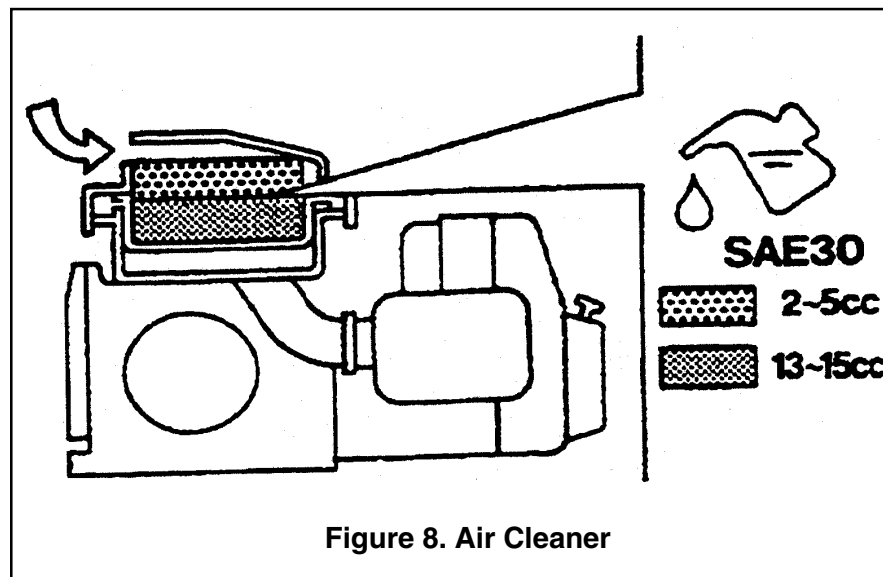
- Drain oil reservoir on foot housing. Refill with approximately 2.1 pt. (1000cc) of 10W-30 motor oil. Oil should be midway in sight glass. Break in oil should be changed after first 50 hours.

Yearly

- Check the fuel line and the oil line regularly for damage and to ensure that there are no leaks.
- Replace the oil and fuel lines every two years to maintain the performance and flexibility lines.

Long Term Storage

- Drain fuel from fuel tank, fuel line and carburetor.
- Remove spark plug and pour a few drops of motor oil into cylinder. Crank engine 3 to 4 times so that oil reaches all internal parts.
- Clean exterior with a cloth soaked in clean oil.
- Store unit covered with plastic sheet in moisture free and dust free location out of direct sunlight.



MT-70H — TROUBLESHOOTING GUIDE

TABLE 3. ENGINE TROUBLESHOOTING

SYMPTOM	POSSIBLE PROBLEM	SOLUTION
Difficult to start		
Fuel is available but spark plug will not ignite. (Power available at high tension cable).	Ignition plug being bridge?	Check ignition system.
	Carbon deposit at ignition?	Clean or replace ignition.
	Short circuit due to defective insulators?	Replace insulators.
	Improper spark gap?	Set spark plug gap to the correct gap.
Fuel is available but spark plug will not ignite. (Power NOT available at high tension cable).	Short circuit at stop switch?	Check stop switch circuit. Replace stop switch if defective.
	Ignition coil defective?	Replace ignition coil.
Fuel is available and spark plug ignites (compression normal).	Muffler clogged with carbon deposits?	Clean or replace muffler.
	Mixed fuel quality is inadequate?	Check fuel to oil mixture.
	Fuel in use inadequate (water, dust)?	Flush fuel sytem and replace with fresh fuel.
	Air Cleaner clogged?	Clean or replace air cleaner.
Fuel is available and spark plug ignites (compression low).	Defective cylinder head gasket?	Tighten cylinder head bolts or replace head gasket.
	Cylinder worn?	Replace cylinder.
	Spark plug loose?	Tighen spark plug.
Operation not satisfactory		
Not enough power available (compression normal, no miss-firing).	Air cleaner clogged?	
	Air in fuel line?	Bleed (remove air) from fuel line.
	Fuel level in carbureator float chamber improper?	Adjust carbureator float
	Carbon deposits in cylinder?	Clean or replace cylinder
Not enough power available (compression normal, miss-firing).	Ignition coil defective?	Flush fuel sytem and replace with fresh fuel.
	Ignition plug often shorts?	Replace ignition wires, clean ignition.
	Fuel in use inadequate (water, dust)?	Flush fuel sytem and replace with fresh fuel.
Engine overheats.	Mixed fuel quality is inadequate?	Check fuel to oil mixture.
	Excessive carbon depostion in combustion chamber?	Clean or replace crankcase.
	Exhaust or muffler clogged with carbon.	Clean or replace muffler.
	Spark plug heat value incorrect?	Replace spark plug with correct type spark plug.

MT70-H — TROUBLESHOOTING GUIDE

TABLE 3. ENGINE TROUBLESHOOTING (continued)

SYMPTOM	POSSIBLE PROBLEM	SOLUTION
Operation not satisfactory		
Rotational speed fluctuates.	Governor adjustment improper?	Adjust governor to correct lever.
	Governor spring defective?	Clean or replace ignition.
	Fuel flow erratic?	Check fuel line.
	Air taken in through suction line?	Check suction line.
Recoil starter not working properly.	Dust in rotating part?	Clean recoil starter assembly.
	Spring spring failure?	Replace sprial spring.

TABLE 4. RAMMER TROUBLESHOOTING

SYMPTOM	POSSIBLE PROBLEM	SOLUTION
Engine rotates but amplituide not uniform or does not strike.	Operating speed of throttle lever is incorrectly set?	Set throttle lever to correct position.
	Oil in excess?	Drain excess oil. Bring to correct level.
	Clutch slips?	Replace or adjust clutch.
	Spring Failure?	Replace sprial spring.
	Speed of engine improper?	Adjust engine speed to correct operating RPM setting.

[illegible]

EXPLANATION OF CODE IN REMARKS COLUMN

How to read the marks and remarks used in this parts book.

Items Found In the “Remarks” Column

Serial Numbers-Where indicated, this indicates a serial number range (inclusive) where a particular part is used.

Model Number-Where indicated, this shows that the corresponding part is utilized only with this specific model number or model number variant.

Items Found In the “Items Number” Column

All parts with same symbol in the number column, *, #, +, %, or ■, belong to the same assembly or kit.

NOTE

If more than one of the same reference number is listed, the last one listed indicates newest (or latest) part available.

NOTE

The contents of this catalog are subject to change without notice.

MT-70H— SUGGESTED SPARE PARTS

MT-70H RAMMER 1 TO 3 UNITS

Qty.	P/N	Description
1	956300130	LEVER, THROTTLE ASSY
1	502303040	WIRE, THROTTLE ASSY
1	959401750	STOPPER FOR WIRE
1	354030030	ELEMENT, YELLOW
1	354030040	BELLOWS
2	050201500	O-RING
1	354910020	CLAMP, BELLOWS
1	301322990	FUEL COCK
2	301419750	FILTER, IN-LINE FUEL
2	954405080	STRAINER
1	0662000011	BUTTON, STOP
1	1573620101	ELEMENT SET
2	0650140010	SPARK PLUG

MT-70H RAMMER 3 TO 5 UNITS

Qty.	P/N	Description
2	060404010	SEAL, OIL
2	050100950	O-RING, LOWER GUIDE CYLINDER
2	956300130	LEVER, THROTTLE ASSY
2	502303040	WIRE, THROTTLE ASSY
2	959401750	STOPPER FOR WIRE
3	354030030	ELEMENT, YELLOW
3	354030040	ELEMENT, GRAY
1	352206600	BELLOWS
2	050201500	O-RING, UPPER GUIDE CYLINDER
1	354910020	CLAMP, BELLOWS
2	0430440033	CAP, FUEL TANK
2	301322990	FUEL COCK ASSEMBLY
3	301419750	FILTER, IN-LINE FUEL
3	954405080	STRAINER
2	0662000011	BUTTN, STOP (S/N C-1001 & BELOW)
3	1573620101	ELEMENT SET ENGINE
4	0650140010	SPARK PLUG

NOTE

Part number on this Suggested Spare Parts List may super cede/replace the P/N shown in the text pages of this book.

MT-70H RAMMER 5 TO 10 UNITS

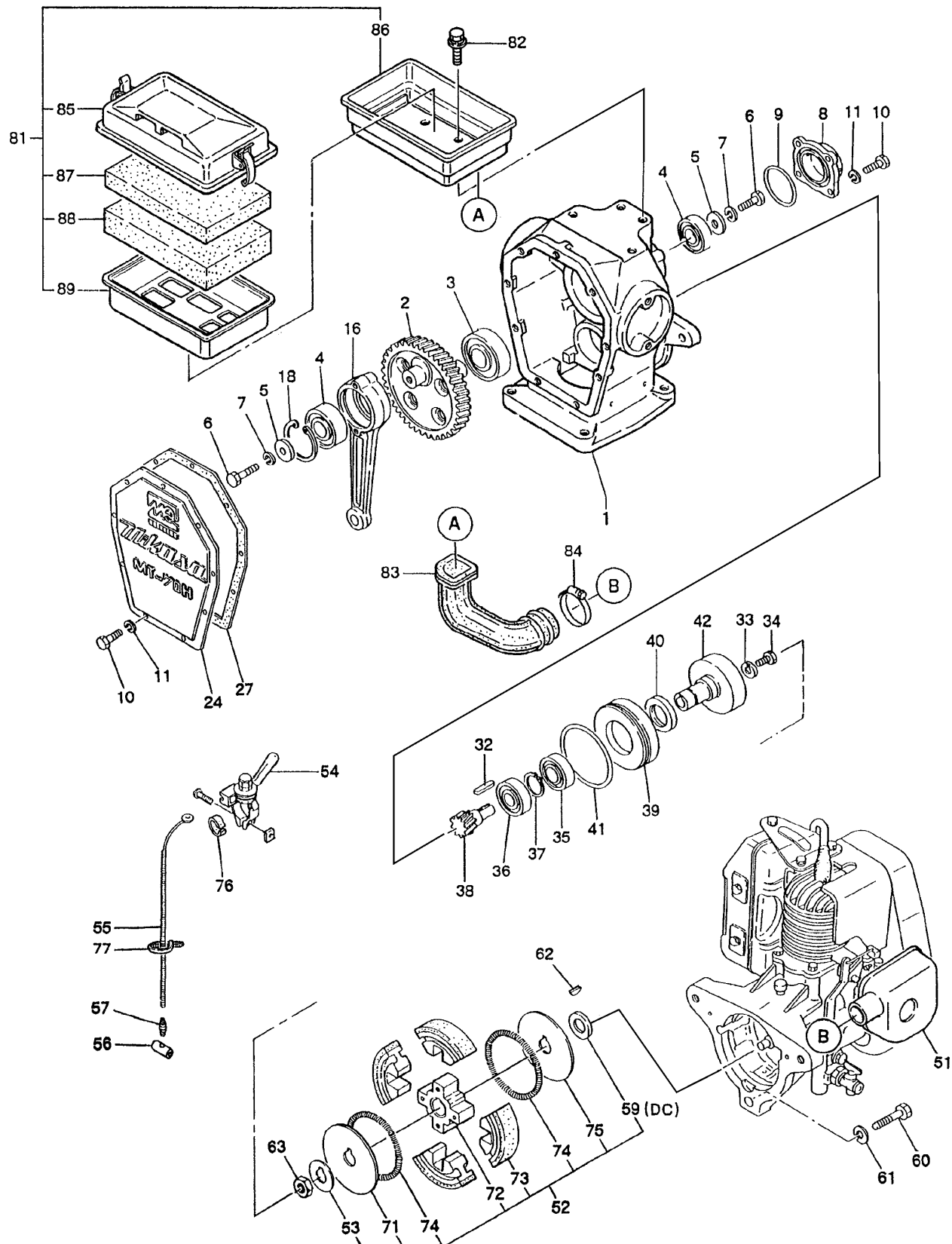
Qty.	P/N	Description
4	060404010	SEAL, OIL
4	050100950	O-RING
2	956300130	LEVER, THROTTLE ASSY
2	502303040	WIRE, THROTTLE ASSY
2	959401750	STOPPER FOR WIRE
4	354030030	ELEMENT, YELLOW
4	354030040	ELEMENT, GRAY
1	352206600	BELLOWS
4	050200950	O-RING
4	050201500	O-RING, UPPER GUIDE CYLINDER
2	359910020	CLAMP, BELLOWS
3	0430440033	CAP, FUEL TANK
3	301322990	FUEL COCK ASSEMBLY
4	301419750	FILTER, IN-LINE FUEL
4	954405080	STRAINER
2	0662000011	BUTTN, STOP (S/N C-1001 & BELOW)
4	1573620101	ELEMENT SET ENGINE
1	354211840	AIR CLEANER
1	1066252100	CARBURETOR ASSY.
1	1061500603	GASKET
1	1061510111	GASKET, HEAD
1	1063510201	GASKET, EXHAUST
1	1066256818	VALVE, INLET NEEDLE
4	0650140010	SPARK PLUG

MT-70H RAMMER 10+ UNITS

Qty.	P/N	Description
6	060404010	SEAL, OIL
6	050100950	O-RING, LOWER GUIDE CYLINDER
2	956300130	LEVER, THROTTLE ASSY
2	502303040	WIRE, THROTTLE ASSY
2	959401750	STOPPER FOR WIRE
6	354030030	ELEMENT, YELLOW
6	354030040	ELEMENT, GRAY
6	354332700	BELLOWS
6	050200950	O-RING
6	050201500	O-RING, UPPER GUIDE CYLINDER
2	354329380	CLAMP, BELLOWS
4	0430440033	CAP, FUEL TANK
4	954300390	FUEL COCK ASSEMBLY
6	301419750	FILTER, IN-LINE FUEL
6	95405080	STRAINER
3	0662000011	BUTTN, STOP (S/N C-1001 & BELOW)
6	1573620101	ELEMENT SET ENGINE
1	301421360	CLUTCH ASSY.
1	354211840	AIR CLEANER
2	10662552100	CARBURETOR ASSY.
2	1061500603	GASKET
2	1061510111	GASKET, HEAD
2	1063510201	GASKET, EXHAUST
2	1066256818	VALVE, INLET NEEDLE
8	0650140010	SPARK PLUG

MT-70H — CRANKCASE AND ENGINE

CRANKCASE AND ENGINE



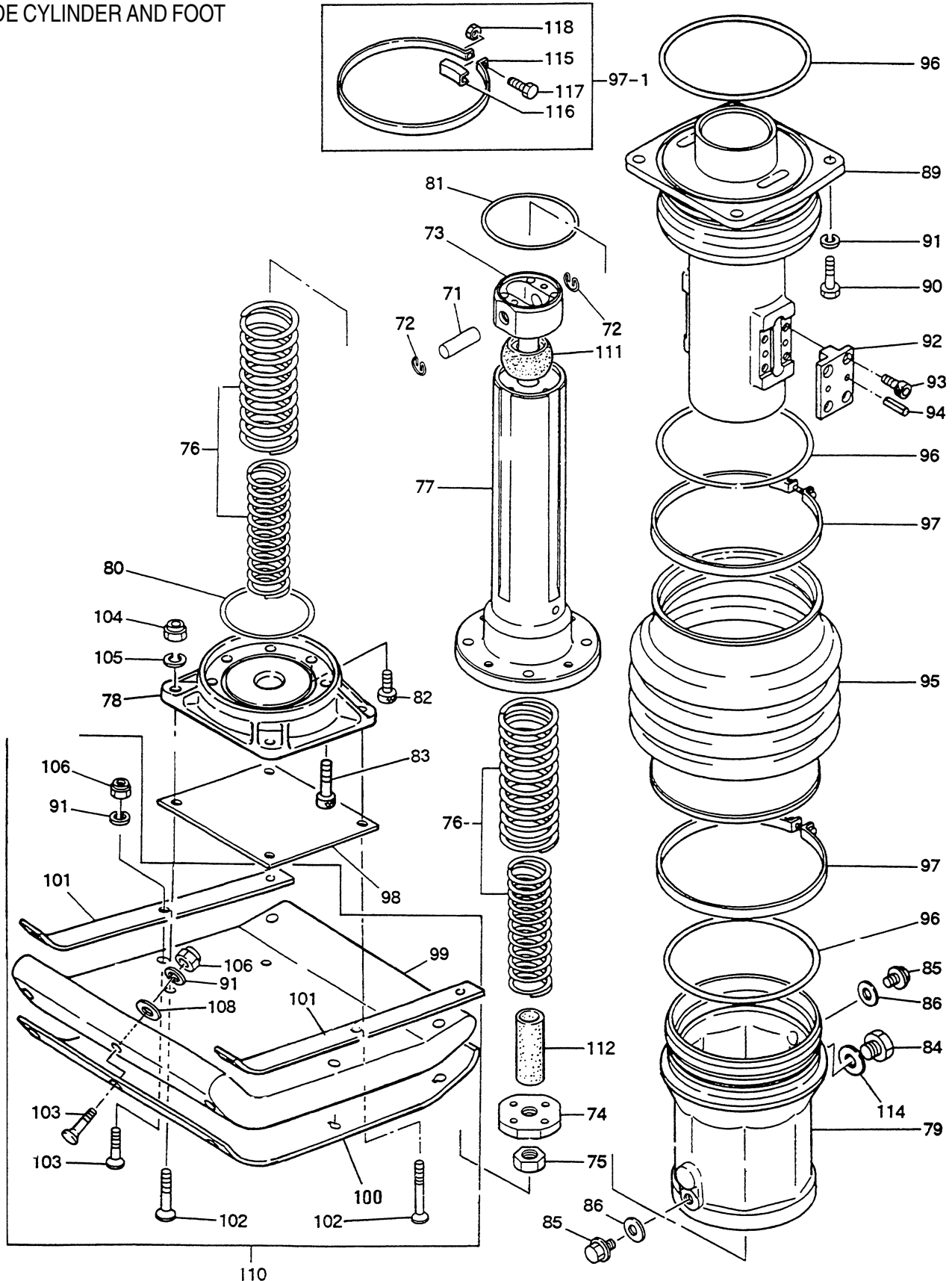
MT-70H — CRANKCASE AND ENGINE

CRANKCASE AND ENGINE

NO	PART NO	PART NAME	QTY	REMARKS
1	352111680	CRANK CASE	1	
2	352321580	CRANK GEAR	1	
3	040006207	BEARING (6207)	1	
4	040006305	BEARING (6305)	1	
5	952400690	WASHER 9X35X4.5	2	
6	011208025	BOLT 8X25 T	2	REPLACES 001220825
7	030208200	WASHER SW M8	2	
8	352423271	BEARING COVER	1	
9	050920630	O -RING JAS02063	1	
10	011206020	BOLT 6X20 T	13	
11	030206150	WASHER SW M6	13	
16	301300530	CONNECTING ROD	1	
18	080100620	STOP RING R-12	1	
24	352111800	FRONT COVER	1	
27	352444450	PACKING FRONT COVER	1	
32	951010060	KEY 5X5X32	1	
33	301010200	LOCK WASHER 8X25	1	
34	011008020	BOLT 8X20 H	1	REPLACES 001210820
35	041006207	BEARING 6207Z	1	
36	0600250010	BEARING 6205	1	REPLACES 040006205
37	080200350	STOP RING S-35	1	
38	301010160	PINION	1	
39	52441340	SPACER	1	
40	060404010	OIL SEAL TC-40528	1	
41	050100950	O-RING G-95	1	
42	352437870	CLUTCH DRUM	1	
51	911101003	ENGINE ASSY. EC10GH (LC)MT-70H	1	
52	301421363	CLUTCH ASSY.	1	INCLUDES ITEMS W/ *, REPLACES 301421360
53*	301010210	LOCK WASHER CLUTCH	1	
54	956300130	THROTTLE LEVER	1	
55	502303040	THROTTLE WIRE	1	
56	959401750	WIRE STOPPER ASSY.	1	
57	402010110	RETURN SPRING	1	REPLACES 301010950
59	301420750	SPACER 15X21X4 T	1	
60	012210040	BOLT 10X40 T	3	REPLACES 001221040
61	030210250	WASHER SW M10	3	
62	951403420	CRESCENT KEY	1	REPLACES 0053204201
63	301010960	LOCK NUT	1	REPLACES 352010010
71*	943060020	CLUTCH GUIDE / B	1	
72*	943050050	CLUTCH BOSS	1	
73*	943020020	CLUTCH SHOE	4	
74*	943030020	CLUTCH SPRING	2	
75*	943060010	CLUTCH GUIDE /A	1	
76	959403750	RUBBER , SLIP STOP	1	
77	2267510103	CLAMP	1	
81	354211840	AIR CLEANER	1	INCLUDES ITEMS W/#
82	011008020	BOLT 8X20	4	
83	354330590	INTAKE PIPE	1	
84	507010110	CLAMP	1	
85#	354030010	BODY	1	
86#	354030020	BACK PLATE	1	
87#	354030030	ELEMENT YELLOW	1	
88#	354030040	ELEMENT GRAY	1	
89#	354030050	ELEMENT FRAME	1	

MT-70H — GUIDE CYLINDER AND FOOT

GUIDE CYLINDER AND FOOT



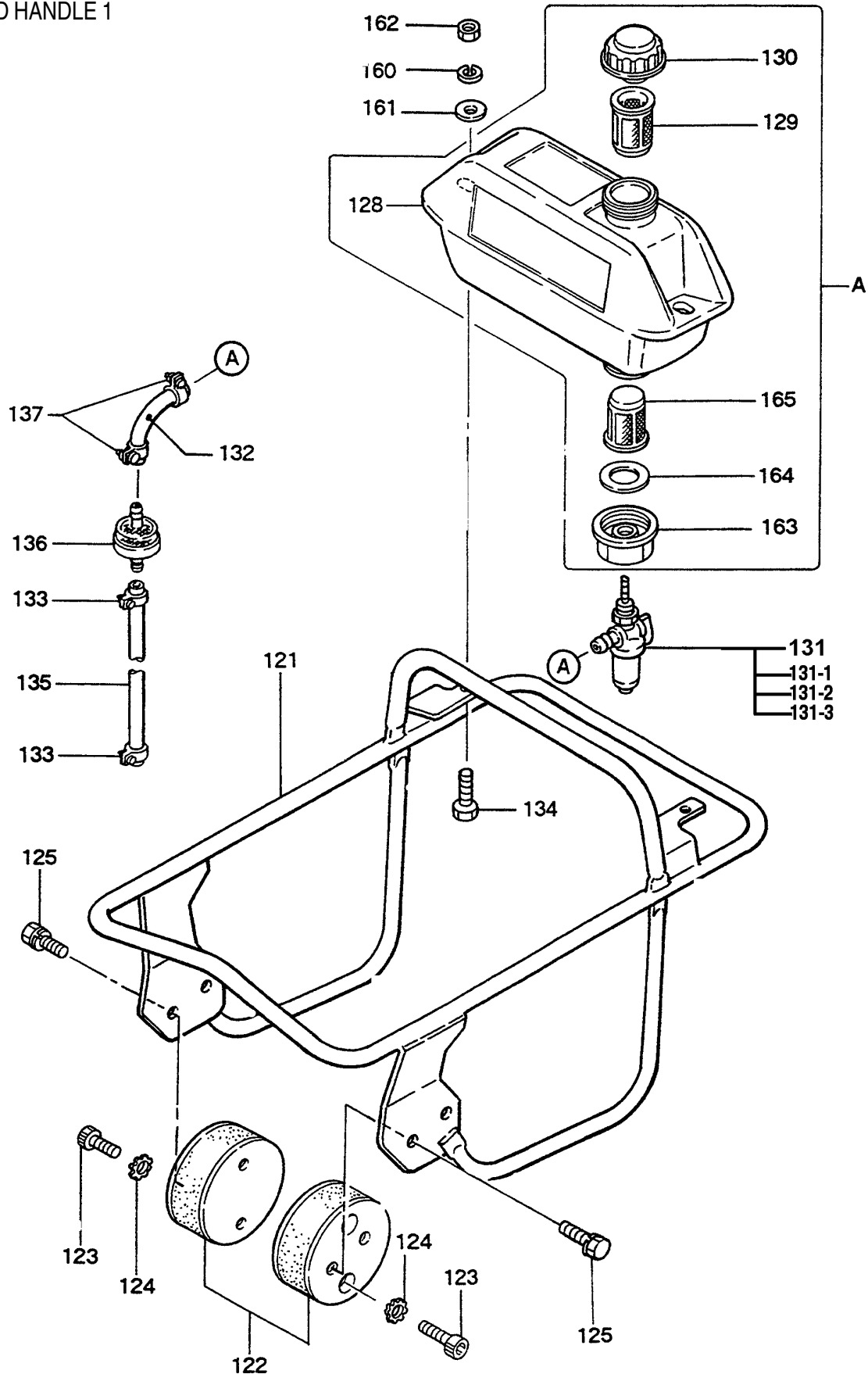
MT-70H — GUIDE CYLINDER AND FOOT

GUIDE CYLINDER AND FOOT

NO	PART NO	PART NAME	QTY	REMARKS
71	352423290	PISTON PIN	1	
72	080100150	STOP RING	2	REPLACES 301010350
73	352210510	PISTON ROD	1	
74	352423300	PISTON END	1	
75	020118150	NUT M18 P1.5	1	
76	352321900	MAIN SPRING	2	REPLACES 352321620
77	352209360	SPRING CYLINDER	1	
78	352208510	FOOT PLATE 15	1	
78	352211830	FOOT PLATE	1	
79	352107571	PROTECTION SLEEVE	1	
80	050200950	O-RING P-95	1	
80	050100950	O-RING G-95	1	
81	050201050	O-RING P-105	1	
82	014210020	SOCKET HEAD BOLT	4	REPLACES 001521020
83	014210035	SOCKET HEAD BOLT	4	REPLACES 001521035
84	959010150	LEVEL PLUG TYPE	1	
85	953405270	PLUG 1/4X14 13L	2	
86	953405260	PACKING 1/4 (CU)	2	
89	352105710	GUIDE CYLINDER	1	
90	012010030	BOLT 10X30 T	4	REPLACES 001221030
91#	030210250	WASHER SW M10	11	
92	352423310	STOPPER	2	
92	352437340	STOPPER	2	
93	015620612	SCOKET HEAD BOLT	8	
94	025306016	SPRING PIN 6X16	4	REPLACES 025406016
95	352206600	BELLOWS MT-70	1	
95	354332700	BELLOWS ORANGE \ MT-70H	1	REPLACES 352326820
96	050201500	O-RING P-150	3	
97-1	354910020	KIT CLAMP BELLOWS	2	INCULDES ITEMS W/* REPLACES 352010020
98	35231510	BASE PLATE	1	REPLACES 352444490
98	352321970	BASE PLATE	1	
99#	352108220	FOOT 285B 331L	1	
100	352108230	METAL SHEET	1	
101	303010400	FOOT FITTING	2	
101#	352322581	FOOT FITTING	2	REPLACES 352322580
102	015112075	SUNK HEAD BOLT 12X70 H	4	REPLACES 001611254
103#	015110055	SUNK HEAD BOLT 10X55	7	REPLACES 001611050
104	021112140	NYLON NUT M12	4	REPLACES 022711214
105	030212300	WASHER SW M12	4	
106#	021110120	NYLON NUT	7	REPLACES 022711012
108	506404060	WASHER 11X34X3.2	1	REPLACES 301010540
110	352910032	8511.S FOOT ASSY.	1	INCLUDES ITEMS W/# REPLACES 352910031
111	352431430	STOPPER UPPER	1	
112	352437450	STOPPER LOWER	1	
114	953404670	COPPER PACKING 17X25.5X1	1	
115*	354329380	BELLOWS CLAMP	2	
116*	354442340	BAND GUIDE BELLOWS	2	
117*	011008035	BOLT 8X35 H	2	REPLACES 001210835
118*	020108060	NUT M8	2	REPLACES 020308060

MT-70H—TANK AND HANDLE 1

TANK AND HANDLE 1



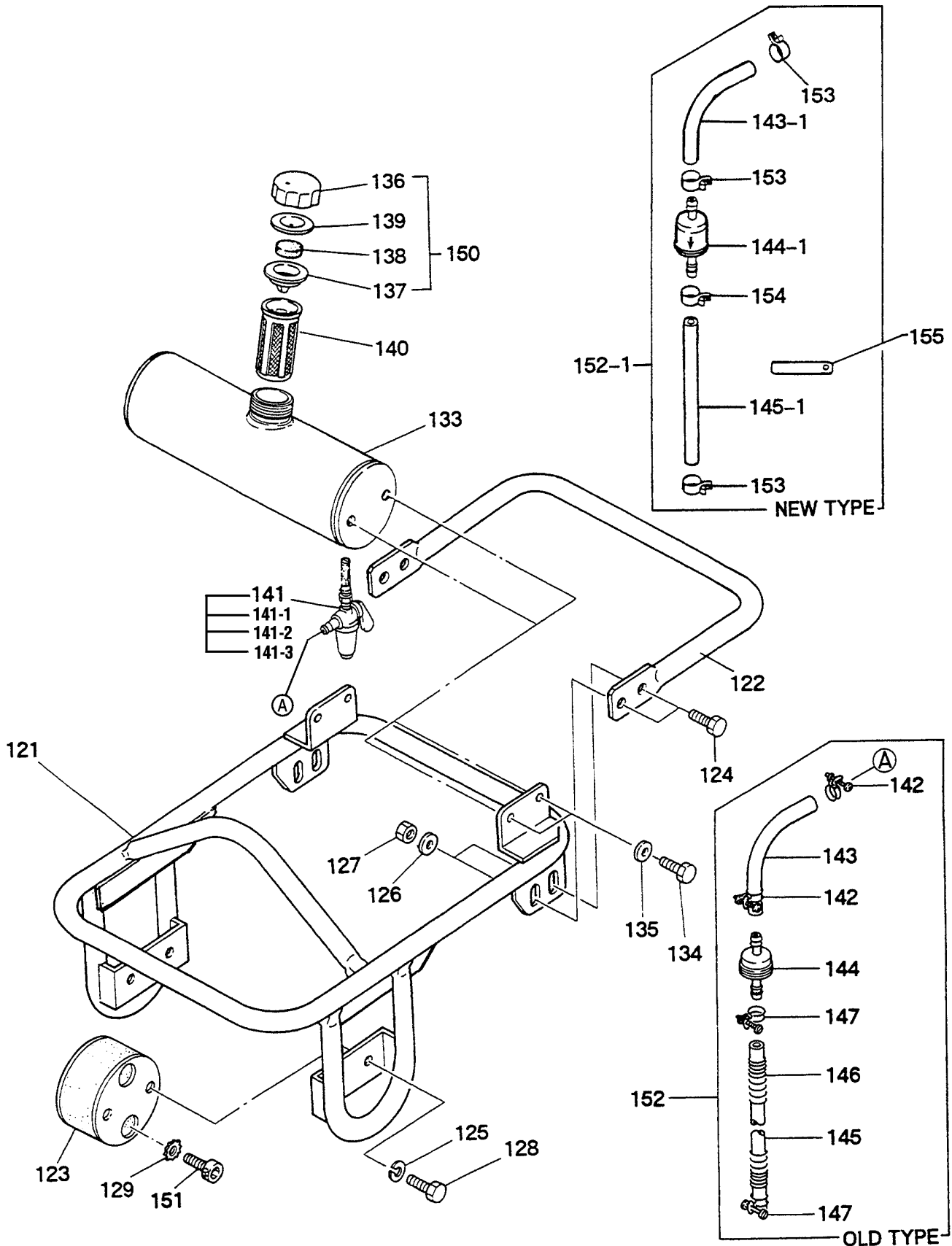
MT-70H— TANK AND HANDLE 1

TANK AND HANDLE 1

<u>NO</u>	<u>PART NO</u>	<u>PART NAME</u>	<u>QTY</u>	<u>REMARKS</u>
A	353910010	FUEL TANK	1	INCULDES ITEMS W/ *
121	352111820	HANDLE	1	
122	351319900	SHOCK ABSORBER	2	
123	014210020	SOCKET HEAD BOLT 10X20	4	REPLACES 001521020
124	033121009	TOOTHED LOCK WASHER M10	4	
125	012210020	BOLT 10X20	4	REPLACES 002211020
128*	351110650	FUEL TANK 3L (P)	1	
129*	954404890	FILTER TANK	1	
130*	0430440033	FUEL TANK CAP	1	
131	954300390	FUEL COCK AY CL-TYPE	1	INCLUDES ITEMS W/# REPLACES 301322990
131-1#	0642001410	CUP	1	
131-2#	0642001420	SCREEN	1	
131-3#	0642001430	RUBBER PACKING	1	
132	351436350	FUEL HOSE R-150	1	
133	954404590	HOSE BAND	2	
134	011208030	BOLT 8X30 T	2	REPLACES 001220830
135	301420330	FUEL HOSE B-150	1	REPLACES 301418140
136	301419750	FUELFILTER CP	1	
137	301420730	HOSE BAND (8)	2	REPLACES 954403030
160	030208200	WASHER SW M8	2	
161	952401450	WASHER 8.5 X22X3	2	
162	022710809	NYLON NUT M8	2	
163*	351437780	HOLDER COCK	1	
164*	351439290	PACKING COCK HOLDER	1	
165*	954405080	STRAINER (100)	1	

MT-70H — TANK AND HANDLE 2

TANK AND HANDLE 2

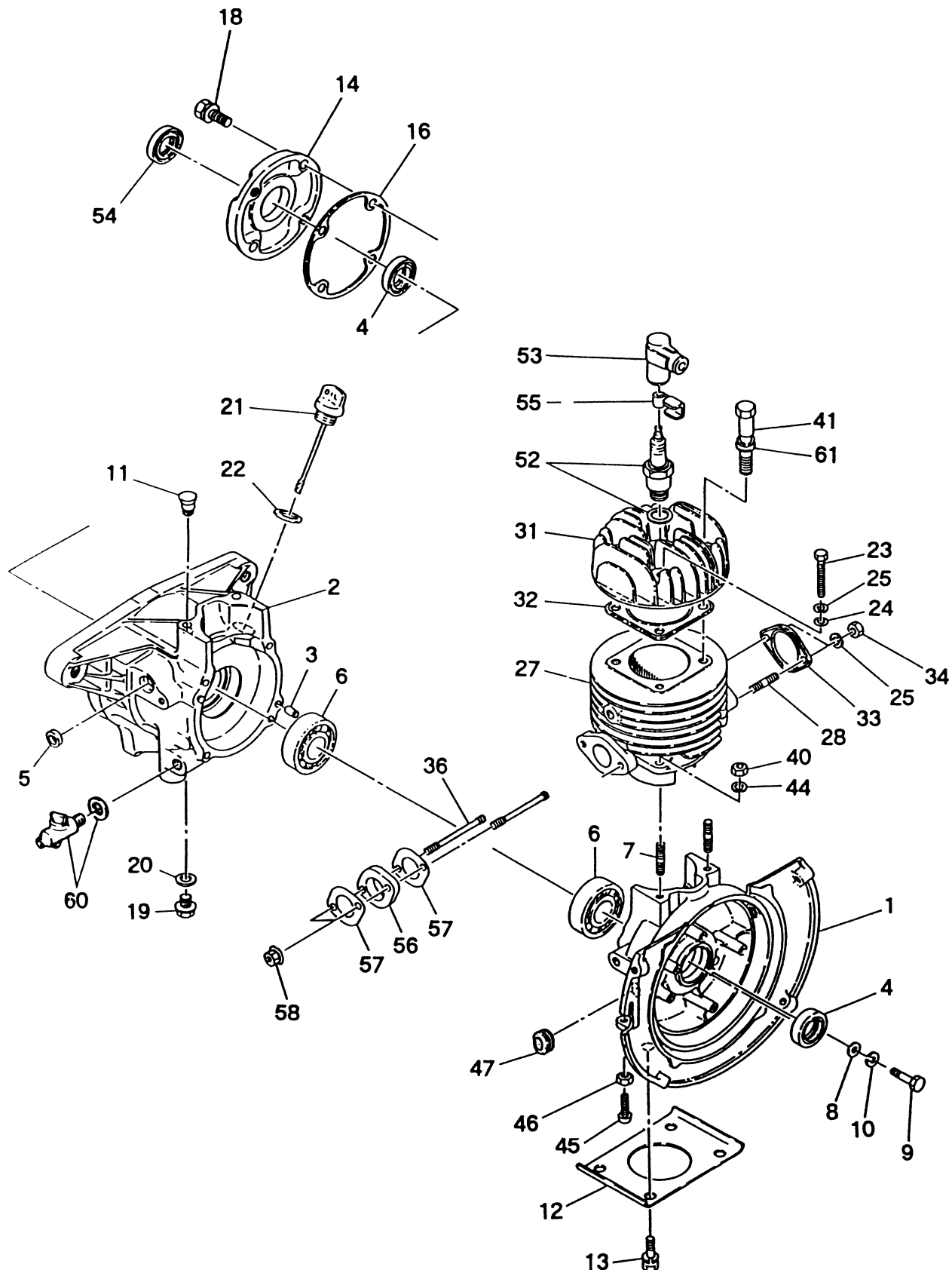


TANK AND HANDLE 2

<u>NO</u>	<u>PART NO</u>	<u>PART NAME</u>	<u>QTY</u>	<u>REMARKS</u>
121	352108250	HANDLE	1	
122	352321591	SUB HANDLE	1	REPLACES 352321590
123	35131990	SHOCK ABSORBER	2	
124	0105091025	BOLT 10X25 T	4	REPLACES 001221025
125	030210250	WASHER SW M10	4	
126	031110160	WASHER PW M10	4	
127	020310080	NUT M10	4	
128	012210020	BOLT 10X20 T	4	
129	033121009	TOOTHED LOCK WASHER M10	4	
133	301010770	FUEL TANK	1	
134	011008015	BOLT 8X15 T	4	REPLACES 001220815
135	031108160	WASHER PW M8	4	
136#	953404280	TANK CAP	1	
137#	301010860	LEAK STOPPER	1	
138#	301010850	SPONGE	1	
139#	301420050	PLATE	1	
140	954405080	FUEL FILTER	1	REPLACES 301010760
141	301322990	FUEL COCK ASSY.	1	REPLACES 954404290 INCLUDES ITEMS W/★
141-1★	0642001410	CUP	1	
141-2★	0642001420	SCREEN	1	
141-3★	0642001430	RUBBER PACKING	1	
142+	301420730	HOSE CLAMP	1	
143+	302420320	FUEL HOSE	1	
143-1%	351436350	FUEL HOSE R-60	1	
144+	352431090	FUEL FILTER CP	1	
144-1%	1066530001	FUEL FILTER	1	
145+	301420330	FUEL HOSE	1	
145-1%	351435160	FUEL HOSE B-95	1	
146+	301420540	PROTECT SPRING 10X180	1	
147+	301420730	HOSE CLAMP 11	2	REPLACES 303010490
150	301910081	TANK CAP ASSY.	1	INCLUDES ITEMS W/#
151	014210020	SOCKET HEAD BOLT 10X20	4	REPLACES 001521020
152	352910010	FUEL HOSE ASSY.	1	INCLUDES ITEMS W/+
152-1	352910011	FUEL HOSE ASSY.	1	INCLUDES ITEMS W/ %
153%	954403030	HOSE BAND (8)	3	
154%	954404590	HOSE BAND 9.5 D	1	
155	2267510103	CLAMP	1	

EC-10G ENGINE (ROBIN) — CRANKCASE AND CYLINDER

CRANKCASE AND CYLINDER



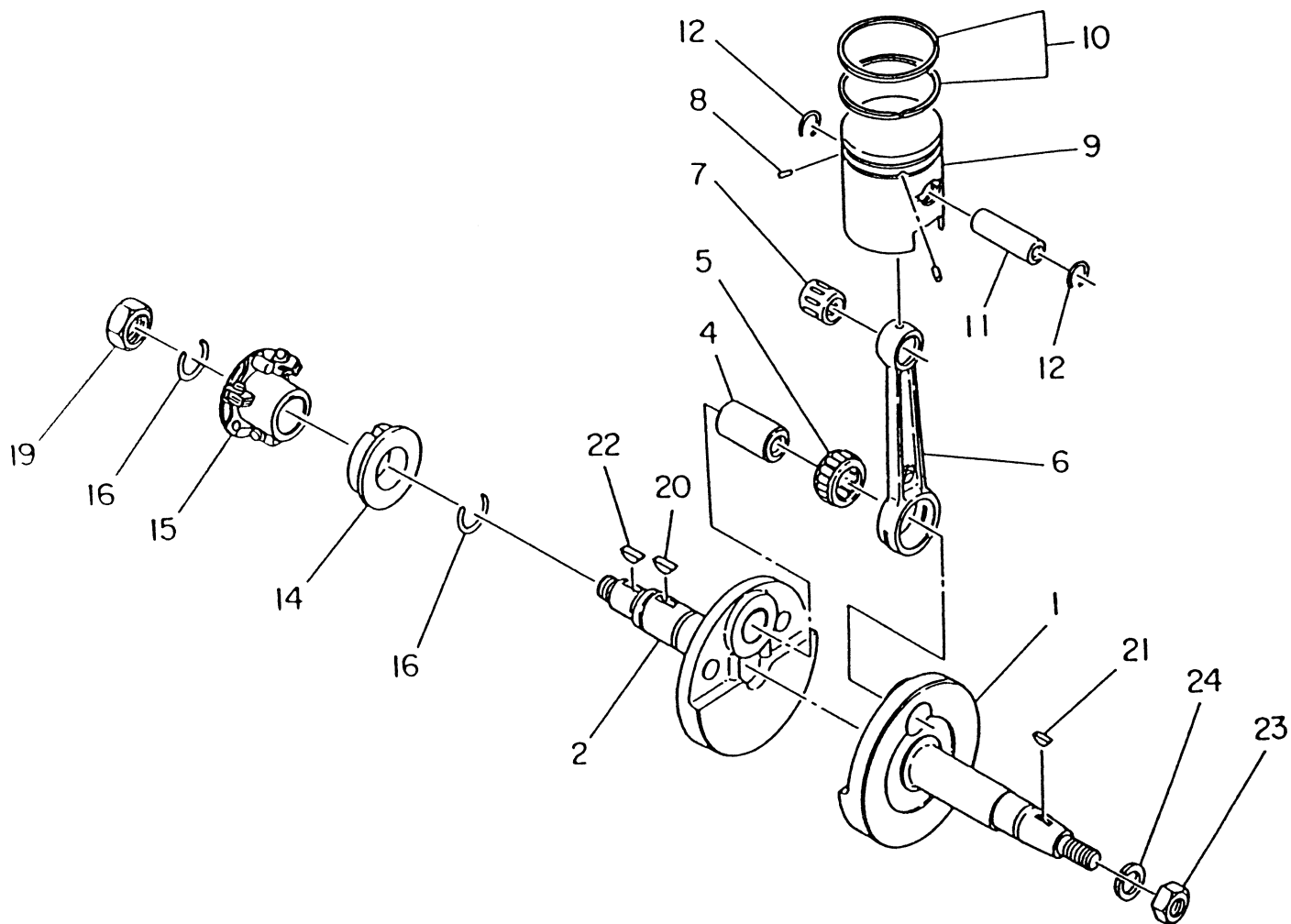
EC-10G ENGINE (ROBIN) — CRANKCASE AND CYLINDER

CRANKCASE AND CYLINDER

NO	PART NO	PART NAME	QTY	REMARKS
1	1061030501	CRANK CASE CP	1	INCULDES ITEMS W/★
3★	0310060010	DOWEL PIN	2	
4★	0440200010	OIL SEAL	2	
5★	044008010	OIL SEAL 7.4X14X4	1	
6★	0600200020	BALL BEARING (6204C3)	2	
7★	0105070010	STUD	4	
8★	0200070030	WASHER EC10	4	
9★	0100070010	BOLT EC10	4	
10★	0203070010	SPRING WASHER	4	
11★	0670070100	AIR BREATHER	1	
12	1061610101	PLATE BASE	1	
13	0011108120	BOLT AND WASHER ASSY	4	
14	1061160111	CRANK CASE COVER COMPL.	1	INCULDES ITEMS W/#
16%	1061500603	GASKET , CASE COVER	1	
18	0130060130	BOLT AND WASHER	4	
19	0401080020	PLUG	1	REPLACES 0401080010
20	0210080010	GASKET	1	
21	1066360701	OIL PLUG	1	
22%	0210160010	GASKET	1	
23	0103080010	BOLT	2	
24	003100800	WASHER	2	
25	030208200	SPRING WASHER	4	REPLACES 0032008000
27	1061241001	CYLINDER CP	1	INCULDES ITEMS W/ +
28+	0013108301	STUD	2	
31	1061300113	CYLINDER HEAD	1	
32%	1061510111	GASKET COMPL HEAD	1	
33%	1063510201	GASKET COMPL EXHAUST	1	
34	020108060	NUT	2	REPLACES 0021908000
36	0105060230	STUD	2	
40	0170070020	NUT	4	
41	0130080071	BOLT AND WASHER	2	
44	030208200	SPRING WASHER	4	REPLACES 030208200
45	0149060040	ADJUSTING SCREW	1	
46	0021706000	NUT	1	
47	0241070090	GROMMET	1	
52	0650140010	SPARK PLUG	1	NGK B-4
53	0655000140	SPARK PLUG CAP	1	
54#	0440200030	OIL SEAL	1	REPLACES 0440200030
55	0659000010	PLUG TERMINAL	1	
56	1063291203	INSULATOR	1	
57%	1573500103	GASKET INSULATOR	2	
58	0176060020	SELF LOCK NUT	2	
60	0643000101	DRAIN COCK	1	
	1069900107	GASKET KIT	1	INCLUDES ITEMS W/ %

EC-10G ENGINE (ROBIN) — CRANKSHAFT AND PISTON

CRANKSHAFT AND PISTON



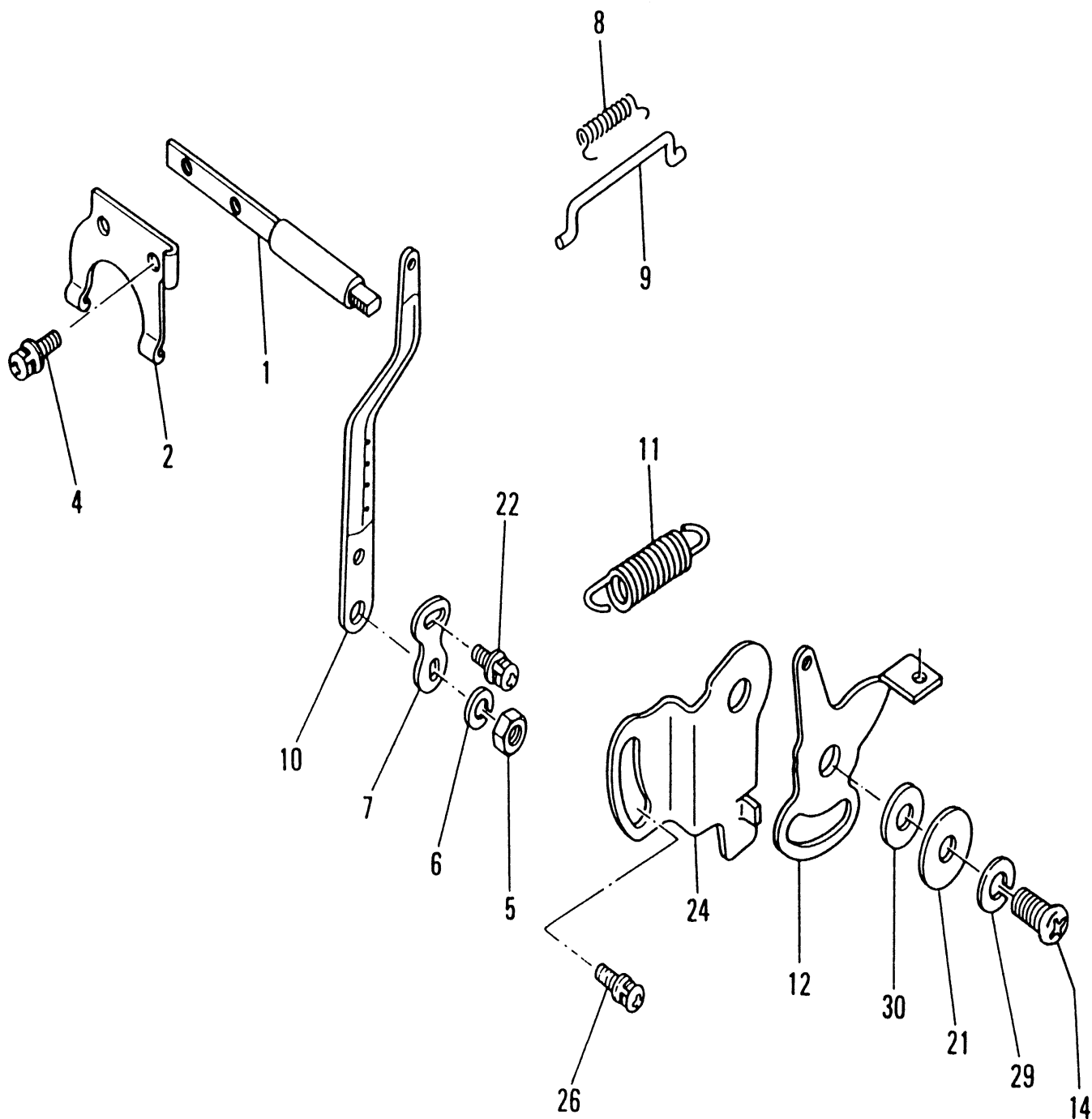
EC-10G ENGINE (ROBIN) — CRANKSHAFT AND PISTON

CRANKSHAFT AND PISTON

<u>NO</u>	<u>PART NO</u>	<u>PART NAME</u>	<u>QTY</u>	<u>REMARKS</u>
1	1062052610	CRANKSHAFT ASSY	1	INCULDES ITEMS 2,4 THRU 6 ON DRAWING
7	0610120010	NEEDLE BEARING	1	
9	1062340111	PISTON COMPL. STD	1	
9	1062340211	PISTON CP 0.25	1	
9	1062340311	PISTON CP 0.5	1	
10	1062350107	PISON RING SET STD	1	
10	1062350207	PISTON RING SET 02.5 O\S	1	
10	1062350307	PISTON RING SET	1	
11	1062330113	PISTON PIN	1	REPLACES 1062330123
12	05651200010	CLIP	2	
14	1064190303	GOVERNOR SLEEVE	1	
15	1064170201	GOVERNOR PLATE	1	REPLACES 1064170601
16	0565200020	CLIP	2	
19	0173120010	LOCK NUT	1	
20	0053204201	WOODRUFF KEY	1	REPLACES 0323040010
21	0053204201	WOODRUFF KEY	1	REPLACES 0053204201
22	0053204201	WOODRUFF KEY	1	
23	0170100010	NUT	1	
24	030210250	SPRING WASHER	1	REPLACES 003201000

EC-10G ENGINE (ROBIN) — GOVERNOR

GOVERNOR



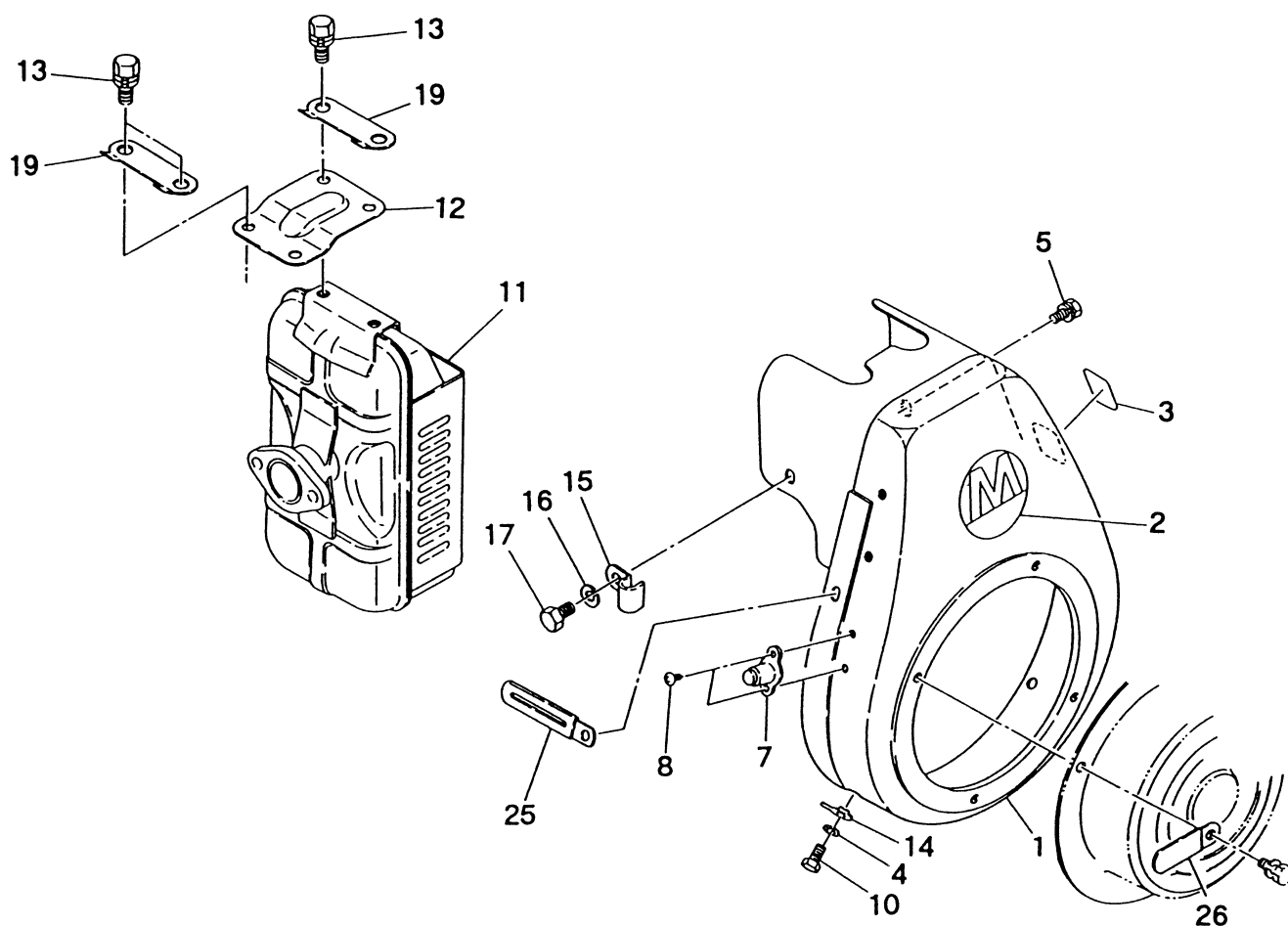
EC-10G ENGINE (ROBIN) — GOVERNOR

GOVERNOR

<u>NO</u>	<u>PART NO</u>	<u>PART NAME</u>	<u>QTY</u>	<u>REMARKS</u>
1	1064220103	GOVERNOR SHAFT	1	
2	1064210113	GOVERNOR YOKE	1	
4	0043504060	SCREW	2	
5	0021706000	NUT	1	
6	030206150	SPRING WASHER	1	REPLACES 0032006000
7	1064240101	ADJUSING PLATE	1	REPLACES 1574240103
8	1064280113	ROD SPRING	1	
9	1054270111	GOVERNOR ROD	1	
10	1064230111	GOVERNOR LEVER	1	REPLACES 1064230601
11	1054250103	GOVERNOR SPRING	1	
12	1064330201	GOVERNOR CONTROL	1	
14	0043108160	SCREW	1	
21	0031108000	WASHER	1	
22	0043504080	SCREW AND W ASHER ASSY	1	REPLACES 0043604080
24	1064350400	STOP PLATE	1	
26	0043606100	SCREW AND WASHER ASSY	1	
29	0032008000	SPRING WASHER	1	REPLACES 0032008000
30	0230080060	SPACER	1	

EC-10G ENGINE (ROBIN) — BLOWER HOUSING & MUFFLER

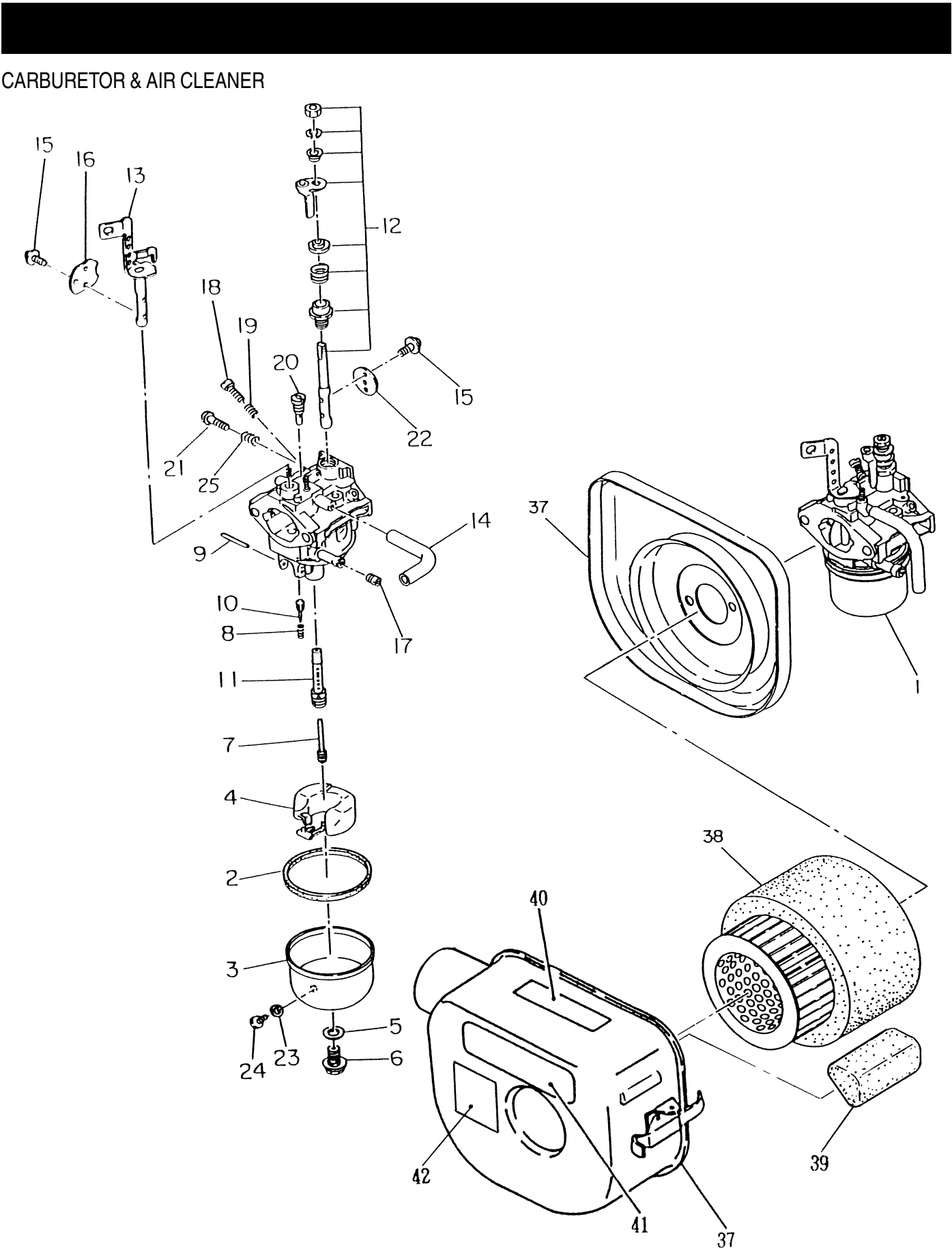
BLOWER HOUSING & MUFFLER



EC-10G ENGINE (ROBIN) — BLOWER HOUSING & MUFFLER

BLOWER HOUSING & MUFFLER

<u>NO</u>	<u>PART NO</u>	<u>PART NAME</u>	<u>QTY</u>	<u>REMARKS</u>
1	1065184601	BLOWER HOUSING COMPL.	1	INCLUDES ITEMS W/★
2★	920100240	DECAL (M- MARK)	1	
3★	1069181533	LABEL (ENGINE NAME)	1	
4	030206150	SPRING WASHER	4	REPLACES 0032006000
5	0016606120	BOLT AND WASHER ASSY.	1	REPLACES 0011006120
7	0662000011	STOP BUTTON	1	
8	0150040050	TAPPING SCREW	2	
10	0016606120	BOLT	4	
11	1063011801	MUFFLER	1	
12	1063560401	BRACKET (MUFFLER)	1	
13	0011308160	BOLT AND WASHER ASSY.	4	
14	0205060010	LOCK WASHER	4	
15	1067501701	CLAMP COMPL.	1	
16	030208200	SPRING WASHER	1	REPLACES 0032008000
17	0016508120	BOLT	1	
19	1056510121	LOCK WASHER	2	
25	1507520103	CLAMP	1	
26	2267510103	CLAMP	1	



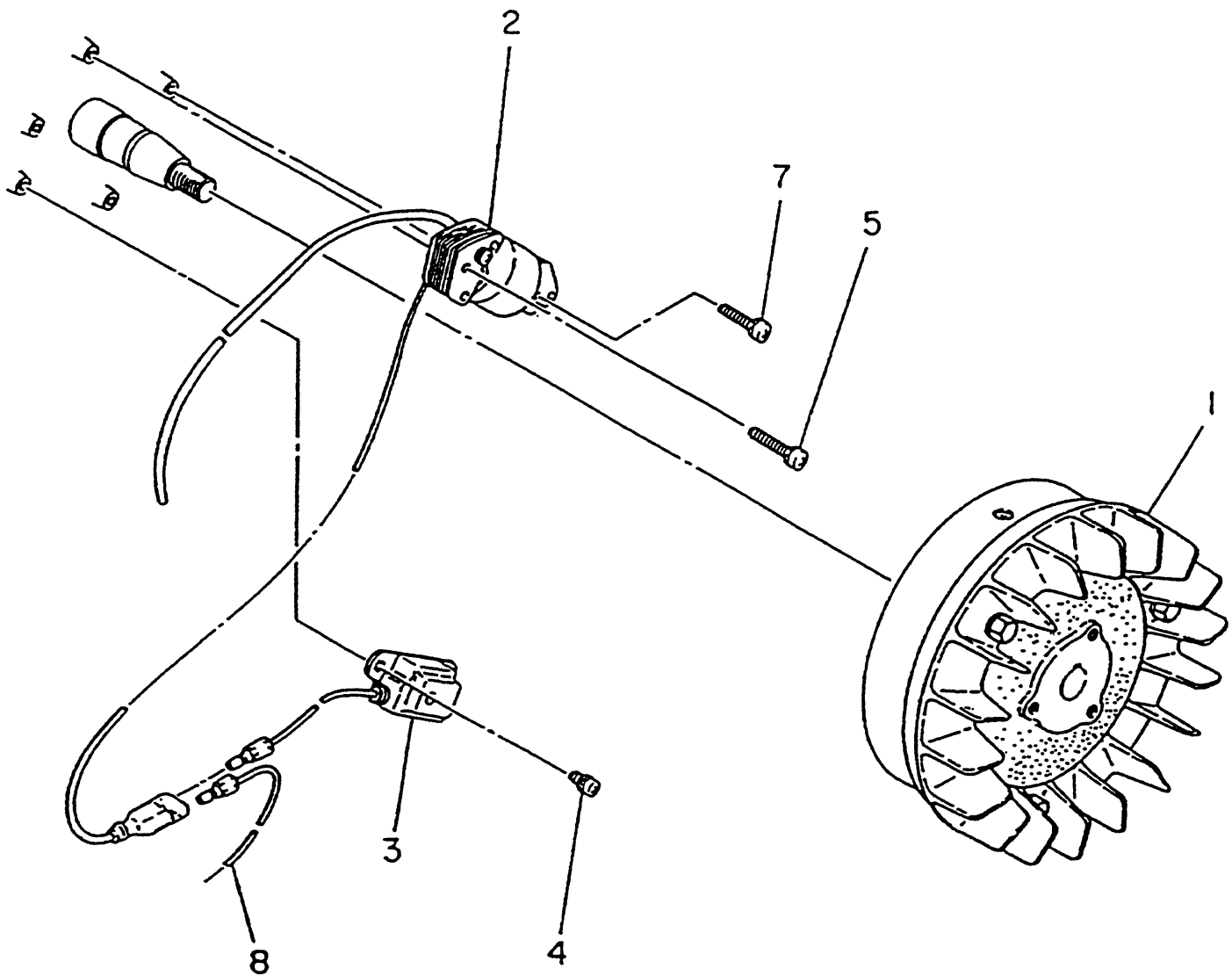
EC-10G ENGINE (ROBIN) — CARBURETOR & AIR CLEANER

CARBURETOR & AIR CLEANER

<u>NO</u>	<u>PART NO</u>	<u>PART NAME</u>	<u>QTY</u>	<u>REMARKS</u>
1	1066252100	CARBURETOR ASSY.	1	INCLUDES ITEMS W/ *
2*	2366254008	PACKING	1	
3*	1616235008	FLOAT BODY	1	
4*	2366250508	FLOAT	1	
5*	2366245008	PACKING	1	
6*	1616235108	BOLT	1	
7*	2266240208	MAIN JET # 72.5	1	
8*	2366244508	SPRING	1	
9*	2146251508	FLOAT PIN	1	
10*	5806083400	NEEDLE	1	REPLACES 1616235208
11*	1616244008	MAIN NOZZLE	1	
12*	1616253008	SHAFT ASSY. (THROTTLE)	1	
13*	1616252008	SHAFT ASSY. (CHOKE)	1	REPLACES 1616252038
14*	1616235308	HOSE	1	
15*	2376245108	SCREW	4	
16*	58060083310	CHOKE VALVE	1	REPLACES 1616252508
17*	1616240008	MAIN JET	1	
18*	1616235408	ADJUSTER	1	
19*	2306244608	SPRING	1	
20*	2076242008	PILOT JET	1	
21*	2246245208	SCREW	1	
22*	1616253508	THROTTLE VALVE	1	
23*	2366254108	PACKING	1	
24*	2366235008	SCREW	1	
25*	2066244608	SPRING	2	
37	1063273100	AIR CLEANER	1	INCLUDES ITEMS W/ #
38#	1573620101	ELEMENT SET	1	
39#	1613261008	ELEMENT	1	
40	0732004430	LABEL CHOKE	1	
41	1073273308	LABEL	1	
42	92023980	DECAL ELEMENT SET	1	

EC-10G ENGINE (ROBIN) — MAGNETO (T.C.I.)

MAGENTO (T.C.I.)



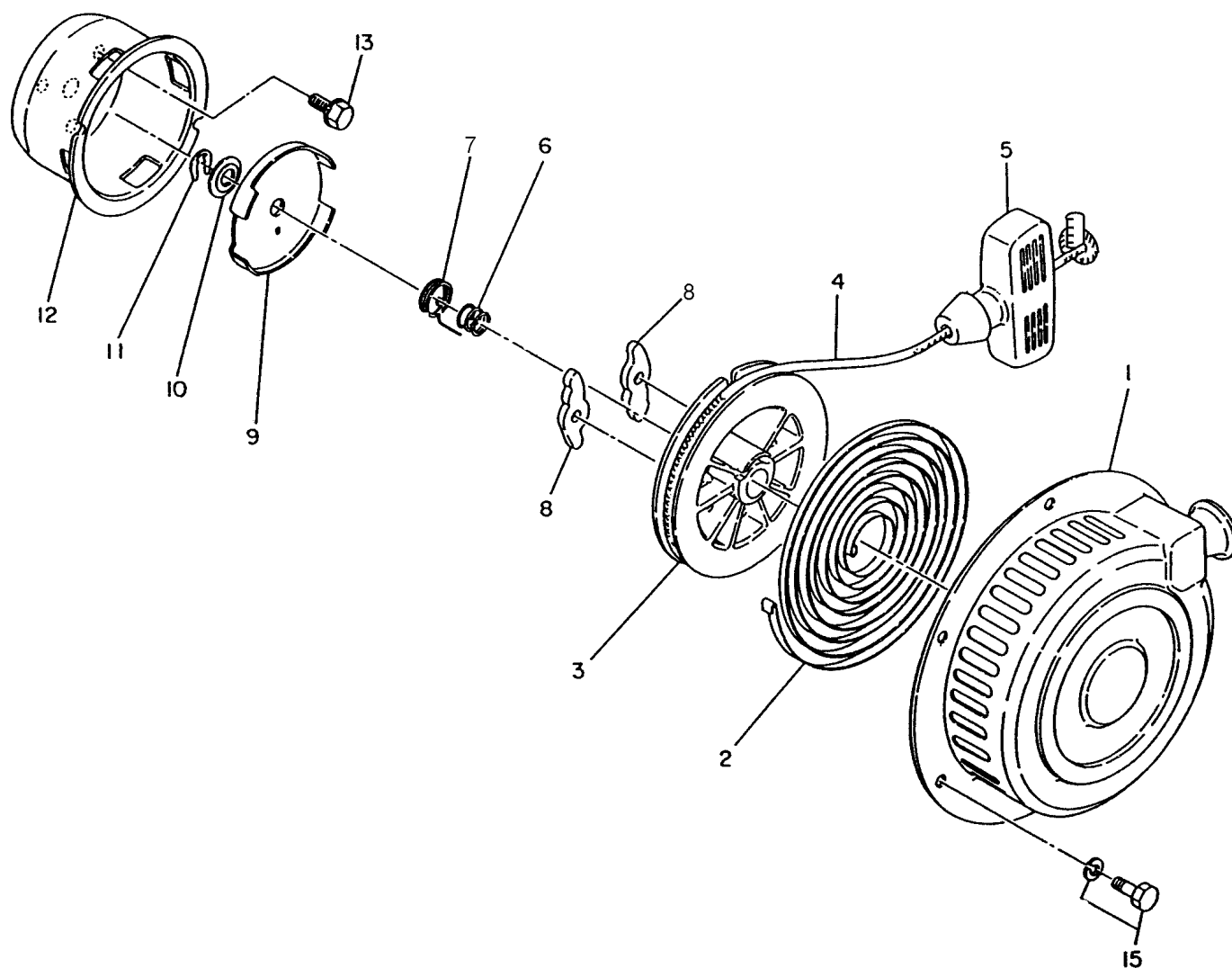
EC-10G ENGINE (ROBIN) — MAGNETO (T.C.I.)

MAGENTO (T.C.I.)

<u>NO</u>	<u>PART NO</u>	<u>PART NAME</u>	<u>QTY</u>	<u>REMARKS</u>
1	1067017508	FLY WHEEL U T.C.I.	1	REPLACES 1067017528
2	1067011018	IGNITION COIL	1	
3	1067024708	T.C.I UNIT	1	
4	0011305100	BOLT AND WASHER ASSY	2	
5	0043504250	SCREW AND WASHER ASSY	1	
7	0043504200	SCREW AND WASHER ASSY	2	
8	1067330101	WIRE COML.	1	

EC-10G ENGINE (ROBIN) — RECOIL STARTER

RECOIL STARTER



EC-10G ENGINE (ROBIN) — RECOIL STARTER

RECOIL STARTER

<u>NO</u>	<u>PART NO</u>	<u>PART NAME</u>	<u>QTY</u>	<u>REMARKS</u>
1	1065081310	RECOIL STARTER	1	INCLUDES ITEMS W/ *
2*	1065011608	SPIRAL SPRING	1	
3*	1065018418	REEL COMPL	1	
4*	1065011308	STARTER ROPE	1	
5*	2065010108	STARTER KNOB COMPL	1	
6*	1065013208	FRICTION SPRING	1	
7*	1065013618	RETURN SPRING	1	
8*	1065012818	RATCHET	2	
9*	1065014408	FRICTION PLATE	1	
10*	1065018508	THRUST WASHER	1	
11*	1065018608	CLAMP	1	
12*	1065018318	STARTER PULLEY	1	
13	0016606120	BOLT AND WASHER ASSY.	3	REPLACES 0011006120
15	0011406120	BOLT AND WASHER ASSY.	4	

PAYMENT TERMS

Terms of payment for parts are net 10 days.

FREIGHT POLICY

All parts orders will be shipped collect or prepaid with the charges added to the invoice. All shipments are F.O.B. point of origin. Multiquip's responsibility ceases when a signed manifest has been obtained from the carrier, and any claim for shortage or damage must be settled between the consignee and the carrier.

MINIMUM ORDER

The minimum charge for orders from Multiquip is \$15.00 net. Customers will be asked for instructions regarding handling of orders not meeting this requirement.

RETURNED GOODS POLICY

Return shipments will be accepted and credit will be allowed, subject to the following provisions:

1. A Returned Material Authorization must be approved by Multiquip prior to shipment.
2. To obtain a Return Material Authorization, a list must be provided to Multiquip Parts Sales that defines item numbers, quantities, and descriptions of the items to be returned.
 - a. The parts numbers and descriptions must match the current parts price list.
 - b. The list must be typed or computer generated.
 - c. The list must state the reason(s) for the return.
 - d. The list must reference the sales order(s) or invoice(s) under which the items were originally purchased.
 - e. The list must include the name and phone number of the person requesting the RMA.
3. A copy of the Return Material Authorization must accompany the return shipment.

4. Freight is at the sender's expense. All parts must be returned freight prepaid to Multiquip's designated receiving point.
5. Parts must be in new and resalable condition, in the original Multiquip package (if any), and with Multiquip part numbers clearly marked.
6. The following items are not returnable:
 - a. Obsolete parts. (If an item is listed in the parts price book as being replaced by another item, it is obsolete.)
 - b. Any parts with a limited shelf life (such as gaskets, seals, "O" rings, and other rubber parts) that were purchased more than six months prior to the return date.
 - c. Any line item with an extended dealer net price of less than \$5.00.
 - d. Special order items.
 - e. Electrical components.
 - f. Paint, chemicals, and lubricants.
 - g. Decals and paper products.
 - h. Items purchased in kits.
7. The sender will be notified of any material received that is not acceptable.
8. Such material will be held for 5 working days from notification, pending instructions. If a reply is not received within 5 days, the material will be returned to the sender at his expense.
9. Credit on returned parts will be issued at dealer net price at time of the original purchase, less a 15% restocking charge.
10. In cases where an item is accepted for which the original purchase document can not be determined, the price will be based on the list price that was effective twelve months prior to the RMA date.
11. Credit issued will be applied to future purchases only.

PRICING AND REBATES

Prices are subject to change without prior notice. Price changes are effective on a specific date and all orders received on or after that date will be billed at the revised price. Rebates for price declines and added charges for price increases will not be made for stock on hand at the time of any price change.

Multiquip reserves the right to quote and sell direct to Government agencies, and to Original Equipment Manufacturer accounts who use our products as integral parts of their own products.

SPECIAL EXPEDITING SERVICE

A \$20.00 to \$50.00 surcharge will be added to the invoice for special handling including bus shipments, insured parcel post or in cases where Multiquip must personally deliver the parts to the carrier.

LIMITATIONS OF SELLER'S LIABILITY

Multiquip shall not be liable here under for damages in excess of the purchase price of the item with respect to which damages are claimed, and in no event shall Multiquip be liable for loss of profit or good will or for any other special, consequential or incidental damages.

LIMITATION OF WARRANTIES

No warranties, express or implied, are made in connection with the sale of parts or trade accessories nor as to any engine not manufactured by Multiquip. Such warranties made in connection with the sale of new, complete units are made exclusively by a statement of warranty packaged with such units, and Multiquip neither assumes nor authorizes any person to assume for it any other obligation or liability whatever in connection with the sale of its products. Apart from such written statement of warranty, there are no warranties, express, implied or statutory, which extend beyond the description of the products on the face hereof.

[illegible]

PARTS AND OPERATION MANUAL

HERE'S HOW TO GET HELP

*PLEASE HAVE THE MODEL AND SERIAL NUMBER
ON-HAND WHEN CALLING*

PARTS DEPARTMENT

800-427-1244 or 310-537-3700

FAX: 800-672-7877 or 310-637-3284

SERVICE DEPARTMENT/TECHNICAL ASSISTANCE

800-478-1244 or 310-537-3700

FAX: 310- 537-4259

WARRANTY DEPARTMENT

888-661-4279, or 310-661-4279

FAX: 310- 537-1173

MAIN

800-421-1244 or 310-537-3700

FAX: 310-537-3927



MULTIQUIP INC.

POST OFFICE BOX 6254

CARSON, CA 90749

310-537-3700 • 800-421-1244

FAX: 310-537-3927

E-MAIL: mq@multiquip.com

WWW: multiquip.com

Atlanta • Boise • Dallas • Houston • Newark
Quebec, Canada • Manchester, UK • Rio De Janeiro, BR • Guadalajara, MX



manufactured for Multiquip Inc.
by

MIKASA SANGYO CO., LTD. Tokyo, Japan