

OPERATION AND PARTS MANUAL



Mikasa

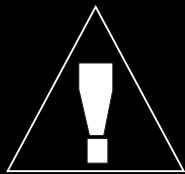
MODEL MT-75H TAMPING RAMMER (EC-12G ROBIN ENGINE)

Revision #8 (04/02/07)

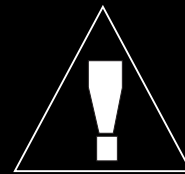
To find the latest revision of this
publication, visit our website at:
www.multiquip.com



THIS MANUAL MUST ACCOMPANY THE EQUIPMENT AT ALL TIMES.



WARNING



CALIFORNIA — Proposition 65 Warning

Engine exhaust and some of its constituents are known to the State of California to cause cancer, birth defects and other reproductive harm.

[illegible]

TABLE OF CONTENTS

Proposition 65 Warning	2
Table Of Contents	4
Parts Ordering Procedures	5
Rules For Safe Operation	6-7
Operation and Safety Decals	8
General Information	9

MT-75H

Specification	10
Controls and Components	11
Operation	12-13
Maintenance	14
Troubleshooting Guide	15
Explanation Of Codes In Remarks Column	16
Suggested Spare Parts	17
Name Plates and Decals	18-19
Crankcase and Engine	20-21
Guide Cylinder and Foot	22-23
Tank and Handle	24-25

EC-12G ROBIN ENGINE

Crankcase and Cylinder Head	26-27
Crankshaft and Piston	28-29
Muffler and Air Cleaner	30-31
Governor	32-33
Blower Housing & Recoil Starter	34-35
Electric Device	36-37
Carburetor	38-39

Terms and Condition Of Sale — Parts	40
---	----

NOTE

*Specification and part number
are subject to change without
notice.*

www.multiquip.com

Ordering parts has never been easier!

Choose from three easy options:



Order via Internet (Dealers Only):

Order parts on-line using Multiquip's SmartEquip website!

- View Parts Diagrams
- Order Parts
- Print Specification Information



If you have an MQ Account, to obtain a Username and Password, E-mail us at: **parts@multiquip.com**.

To obtain an MQ Account, contact your District Sales Manager for more information.

Goto www.multiquip.com and click on **Order Parts** to log in and save!

Use the **internet** and qualify for a **5% Discount** on *Standard orders* for all orders which include complete part numbers.*

Note: Discounts Are Subject To Change



Order via Fax (Dealers Only):

All customers are welcome to order parts via Fax.

Domestic (US) Customers dial:

1-800-6-PARTS-7 (800-672-7877)

Fax your order in and qualify for a **2% Discount** on *Standard orders* for all orders which include complete part numbers.*

Note: Discounts Are Subject To Change



Order via Phone: Domestic (US) Dealers Call:
1-800-427-1244

Non-Dealer Customers:

Contact your local Multiquip Dealer for parts or call 800-427-1244 for help in locating a dealer near you.



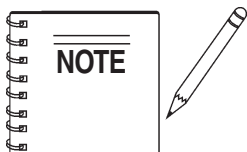
International Customers should contact their local Multiquip Representatives for Parts Ordering information.

When ordering parts, please supply:

- ☐ Dealer Account Number
- ☐ Dealer Name and Address
- ☐ Shipping Address (if different than billing address)
- ☐ Return Fax Number
- ☐ Applicable Model Number
- ☐ Quantity, Part Number and Description of Each Part

☐ Specify Preferred Method of Shipment:

- ☒ UPS/Fed Ex
 - Priority One
 - Ground
 - Next Day
 - Second/Third Day
- ☒ DHL
 - ✓ Truck



All orders are treated as *Standard Orders* and will ship the same day if received prior to 3PM PST.



WE ACCEPT ALL MAJOR CREDIT CARDS!



RULES FOR SAFE OPERATION

CAUTION:



Failure to follow instructions in this manual may lead to serious injury or even death! This equipment is to be operated by trained and qualified personnel only! This equipment is for industrial use only.

The following safety guidelines should always be used when operating the MT-75H Tamping Rammer:

GENERAL SAFETY

- **DO NOT** operate or service this equipment before reading this entire manual.



- This equipment should not be operated by persons under 18 years of age.

- **NEVER** operate this equipment without proper protective clothing, shatterproof glasses, steel-toed boots and other protective devices required by the job.



- **NEVER** operate this equipment when not feeling well due to fatigue, illness or taking medicine.



- **NEVER** operate this equipment under the influence of drugs or alcohol.



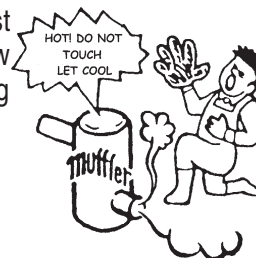
- **NEVER** use accessories or attachments, which are not recommended by Multiquip for this equipment. Damage to the equipment and/or injury to user may result.

- Manufacture does not assume responsibility for any accident due to equipment modifications.

- Whenever necessary, replace nameplate, operation and safety decals when they become difficult read.

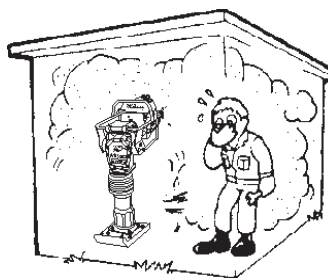
- Always check the machine for loosened threads or bolts before starting.

- **NEVER** touch the hot exhaust manifold, muffler or cylinder. Allow these parts to cool before servicing engine or rammer.



- **High Temperatures** – Allow the engine to cool before adding fuel or performing service and maintenance functions. Contact with *hot* components can cause serious

- The engine section of this rammer requires an adequate free flow of cooling air. Never operate the rammer in any enclosed or narrow area where free flow of the air is restricted. If the air flow is restricted it will cause serious damage to the rammer or engine and may cause injury to people. Remember the rammer's engine gives off **DEADLY** carbon monoxide gas.



- Always refuel in a well-ventilated area, away from sparks and open flames.



- Always use extreme caution when working with **flammable** liquids. When refueling, **stop the engine** and allow it to cool. **DO NOT smoke** around or near the machine. Fire or explosion could result from fuel vapors, or if fuel is spilled on a hot engine.

- **NEVER** operate the rammer in an explosive atmosphere or near combustible materials. An explosion or fire could result causing severe *bodily harm or even death*.

RULES FOR SAFE OPERATION

- **NEVER** Run engine without air filter. Severe engine may occur.
- Always service air cleaner frequently to prevent carburetor malfunction.
- Always be sure the operator is familiar with proper safety precautions and operations techniques before using rammer.
- Always store equipment properly when it is not being used. Equipment should be stored in a clean, dry location out of the reach of children.
- **NEVER** use accessories or attachments, which are not recommended by Multiquip for this equipment. Damage to the equipment and/or injury to user may result.
- **NEVER** Run engine without air cleaner. Severe engine damage may occur.
- Always read, understand, and follow procedures in Operator's Manual before attempting to operate equipment.
- Always be sure the operator is familiar with proper safety precautions and operations techniques before using pump.
- Always store equipment properly when it is not being used. Equipment should be stored in a clean, dry location out of the reach of children.
- Refer to the **ROBIN Engine Owner's Manual** for engine technical questions or information recommended by Multiquip for this equipment. Damage to the equipment and/or injury to user may result.

Transporting

- Always shutdown engine before transporting.
- Tighten fuel tank cap securely and close fuel cock to prevent fuel from spilling.
- Drain fuel when transporting rammer over long distances or bad roads.
- When placing the rammer inside a truck-bed for transport, always tie-down the rammer.

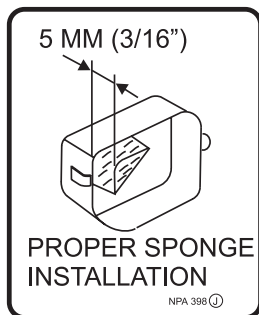
Emergencies

- Always know the location of the nearest **fire extinguisher** and **first aid kit**. Know the location of the nearest telephone. Also know the phone numbers of the nearest **ambulance**, **doctor** and **fire department**. This information will be invaluable in the case of an emergency.

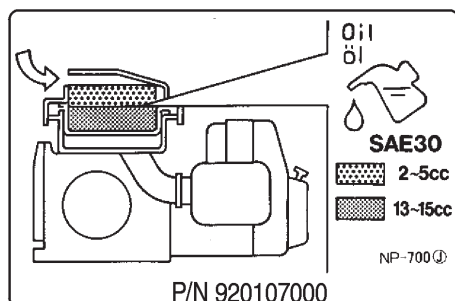
Maintenance Safety

- **NEVER** lubricate components or attempt service on a running machine.
- Always allow the machine a proper amount of time to cool before servicing.
- Keep the machinery in proper running condition.
- Fix damage to the machine immediately and always replace broken parts.
- Dispose of hazardous waste properly. Examples of potentially hazardous waste are used motor oil, fuel and fuel filters.
- **DO NOT** use plastic containers to dispose of hazardous waste.

OPERATION AND SAFETY DECALS



P/N 920203980



P/N 920107000

Caution-Prior to each operation check:
Check all nuts and bolts for tightness.
Check oil levels in both the engine and the lower unit.
Position machine in the upright operating position and check:
1. Lower unit assembly-Check sight glass for proper level.
2. Engine-Fill to the lower outer rim.

OPERATION

To START engine:

Open fuel filter valve under the fuel tank and close choke lever on carburetor.
Place starter switch to "ON" and pull start rope.
When engine starts, open the choke lever completely and allow the engine to warm up 4 to 5 minutes before operation.
Quickly move throttle lever from "OFF" to "ON" to operate.

To STOP engine:

Quickly move throttle lever from "ON" to "OFF" position.
Move STOP SWITCH to "OFF" and close the fuel filter.

NPA-824 ②

P/N 920206240



P/N 920203330

NAMEPLATE

CONTACT MULTIQUIP
SERVICE DEPT.



CAUTION !

- READ OWNER'S SERVICE MANUAL BEFORE OPERATING OR SERVICING THIS MACHINE.
- ALWAYS KEEP UNAUTHORIZED, INEXPERIENCED, UNTRAINED PEOPLE AWAY FROM THIS MACHINE.
- MAKE SURE ALL SAFETY DEVICES ARE OPERATIONAL BEFORE THIS MACHINE IS STARTED. MAKE SURE ENGINE IS TURNED OFF AND SPARK PLUG WIRE DISCONNECTED BEFORE SERVICING THE MACHINE OR COMING IN CONTACT WITH ANY MOVING PART. IF EQUIPMENT IS POWERED BY AN ELECTRIC MOTOR, DISCONNECT ELECTRICAL PLUG.
- NEVER LEAVE MACHINE UNATTENDED WHEN OPERATING. ALWAYS STOP ENGINE AND ALLOW ENGINE TO COOL BEFORE ADDING FUEL OR OIL.

NPA-329 ③

P/N 920203290

To start, switch must be
in the "ON" position

NPA 293

P/N 920202930

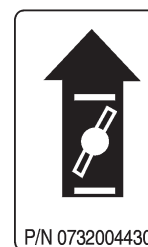
3750 ~ 3950 RPM

NPA 90

P/N 920200900

When you stop
the engine, be
sure to close
the fuel cock.
NPA-399 ④

P/N 920203990



First, remove the element from the pre-cleaner located at the top of the machine. Clean the element with solvent. Apply SAE-30 motor oil as follows: top element (yellow) with 2 to 5 cc and the bottom element (gray) with 13 to 15 cc. Be sure to squeeze out excess oil before reinstalling.

NPA 437 ⑤

P/N 920204370

Definition of Tamping Rammer

The Mikasa MT-75H tamping rammer is a powerful compacting tool capable of applying a tremendous force in consecutive impacts to a soil surface. Its applications include soil compacting for road, embankments and reservoirs as well as backfilling for gas pipelines, water pipelines and cable installation work.

The impact force of the MT-75H levels and uniformly compacts voids between soil particles to increase dry density.

Circular motion is converted to create impact force. The MT-75 H tamping rammer develops a powerful compacting force at the foot of the rammer. To maintain optimum performance, proper operation and service are essential.

Construction of Tamping Rammer

The Mikasa MT-75H is equipped with an air cooled, two cycle gasoline engine. Transmission of the power takes place by increasing the engine speed to engage the centrifugal clutch.

Rammer Gearbox and Spring Cylinder

The Mikasa MT-75H uses an oil bath lubrication system. Always check the oil level through the oil level sight glass at the rear of the tamper foot.

Controls

Before starting the MT-75H Tamping Rammer identify and understand the function of the controls, see Figure 1 on page 9.

Table 1. MT-75H Rammer Specifications

MODEL	MT-75H U.S. (metric)
Overall Height	39.8 in. (1,010 mm)
Overall Width	15.4 in (390 mm)
Overall Length	27.9 in (710 mm)
Shoe Size	11.2 in. x 13.4 in. (285 mm x 340 mm)
Blows/minute	690
Impact Force	2,865 lbs./blow (1,300 kg/blow)
Clutch	Automatic Centrifugal
Operating Weight	141 lbs. (64 kg)

Table 2. MT-75H Engine Specifications

MODEL	Robin EC12-G
Type	Air-Cooled 2 Stroke Gasoline Engine
Piston Displacement	6.96 cu.in. (114 cc)
Max. Output	4.5 hp/4,000 rpm (3.0 KW)
Max. Governed Speed, No Load	4,000 rpm
Cooling System	Air-Cooled
Lubrication System	Fuel-Lubrication Oil Spraying System
Fuel	Unleaded gasoline 25:1 (oil)
Starting System	Recoil Starter

NOTE

Specifications are general and are subject to change without notice. If exact measurements are required, equipment should be weighed and measured.

MT-75H — CONTROLS AND COMPONENTS

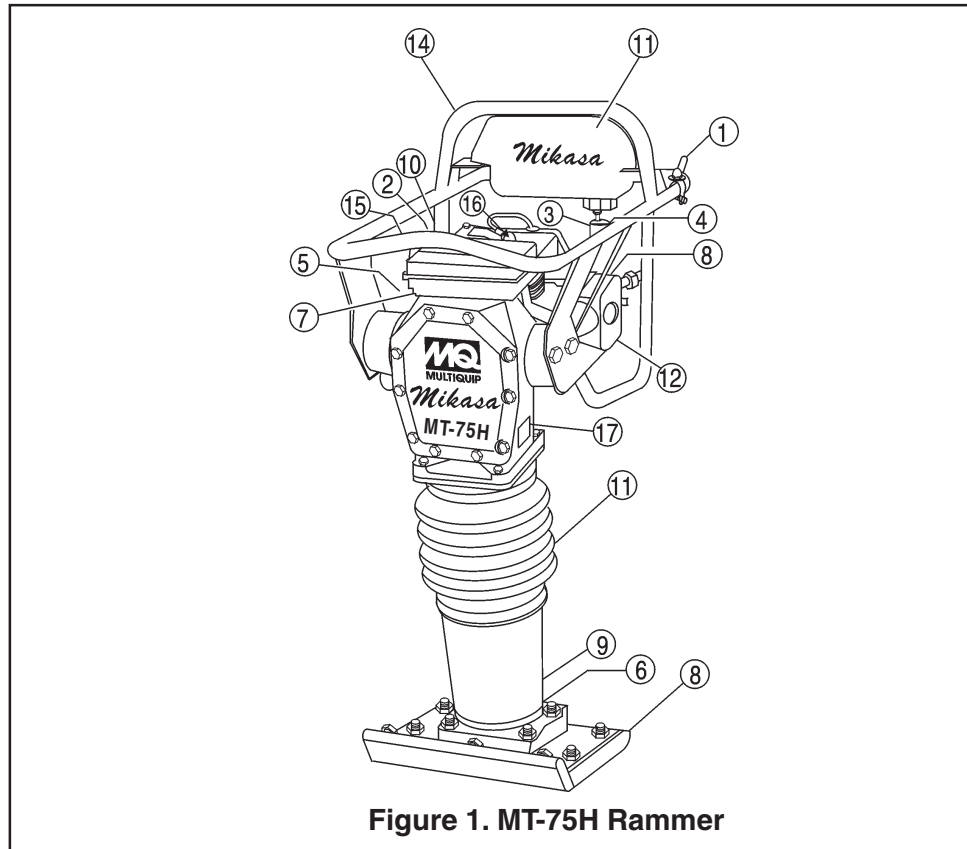


Figure 1. MT-75H Rammer

Figure 1 shows the location of the controls and components for the MT-75H Tamping Rammer. The functions of each control is described below:

1. **Throttle Lever** – Controls engine speed and the tamping action of the rammer.
2. **Engine Stop Switch** – Controls the starting and stopping of the engine. Switch must be in the "ON" position when starting the engine.
3. **Choke Lever** – Used when starting the engine. Normally used in cold weather conditions. In cold weather turn the choke lever to the fully closed position, in warm weather set choke lever half way or completely open.
4. **Fuel Shut-Off Valve** – Supplies fuel from the fuel tank to the engine. To begin fuel flow move the fuel shut-off valve downward.
5. **Excess Fuel Drain Valve** – Open drain plug when excess fuel is present in the carburetor, or crankcase.
6. **Drain Valve** – Open this valve to remove oil from the bellows.
7. **Air Cleaner** – Pre-cleans (first stage) dirt and other debris from entering the engine.
8. **Foot** – Laminated wood with tempered steel plate for superior shock absorption.
9. **Oil Level Sight Glass** – Indicates the level of oil in the oil bath reservoir.
10. **Recoil Starting Handle** – Used when starting the engine. Pull starter handle sharply and quickly, then return starter handle to starter case before releasing.
11. **Fuel Tank/Cap** – Poly fuel tank to avoid rust and corrosion, remove this cap to add gasoline.
12. **Air Cleaner** – Prevents dirt (second stage) and other debris from entering the engine.
13. **Bellows** – Reservoir for oil bath.
14. **Handle** – To operate rammer **GRIP** handle assembly firmly on both sides.
15. **Muffler** – Used to reduce noise and emissions.
16. **Spark Plug** – Provides spark to the ignition system, replace with engine manufactures recommended type spark plug.
17. **Nameplate** – Displays information regarding the rammer.

This section is intended to assist the operator with the initial start-up of the MT-75H Tamping Rammer. It is extremely important that this section be read carefully before attempting to operate the rammer.

DO NOT use your rammer until this section is thoroughly understood.

CAUTION:



Failure to understand the operation of the MT-75H Tamping Rammer could result in severe damage to the trowel or personal injury.

Rammer Gearbox and Spring Cylinder Oil Bath

This unit uses an oil bath lubrication system. Perform the following:

1. Check the oil level through the oil level sight glass at the rear of the tamping foot.
2. If oil is not visible, add 10W-30 motor oil. The bath contains approximately 1.7 pints (800 cc.)

NOTE

The oil level should be kept at the half way point of the sight glass.

Engine

Before pouring fuel into the fuel tank (Figure 2) perform the following:

1. Find a container for the mixing of fuel and gasoline.
2. Use a quality outboard motor oil for 2-cycle engines.
3. Mix gasoline (unleaded) with oil at a 25:1 ratio. Mix well.
4. Be sure to filter the mixed fuel with a strainer at the filler port.
5. If fuel spills on the fuel cap when operating rammer, replace the rubber leak stopper inside the cap.

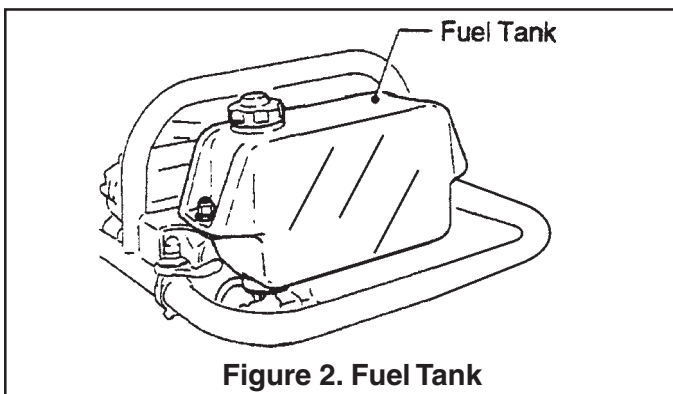


Figure 2. Fuel Tank

Inspection

1. Check all nuts, bolts fasteners for tightness. Retighten as necessary.
2. Clean any dirt from the recoil starter and foot pedestal. Wipe the entire unit clean before operating.
3. Replace any missing or damaged Safety Operation decals.
4. Adjust height of handle. Adjust handle by loosening nuts and moving handle to suit operation. Retighten nuts.

Initial Start-up

When starting the MT-75H Tamping Rammer perform the following:

1. Open the shut-off valve by moving the strainer lever downward (Figure 3), then set the engine start/stop switch (Figure 4) to the "START" position.

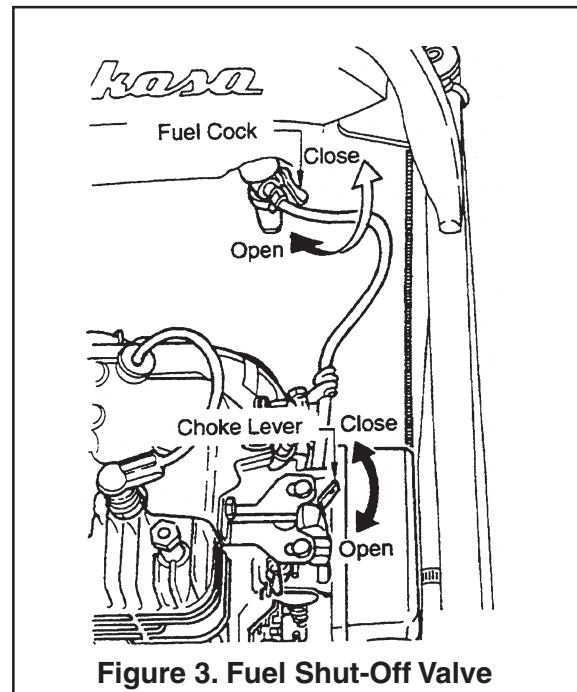


Figure 3. Fuel Shut-Off Valve

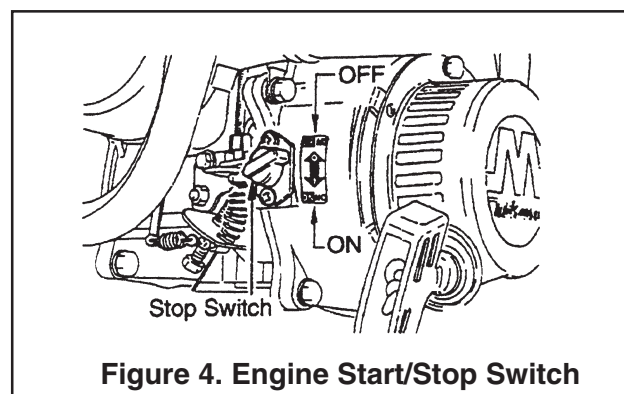
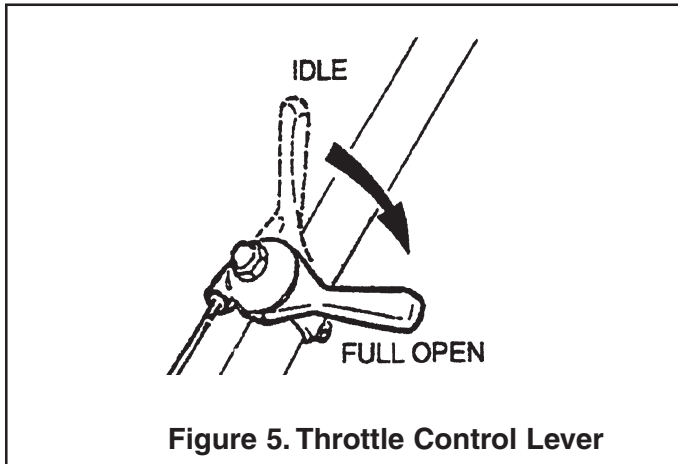
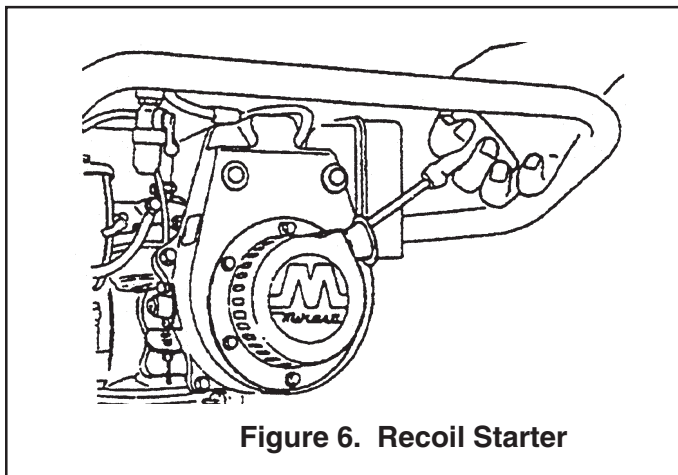


Figure 4. Engine Start/Stop Switch

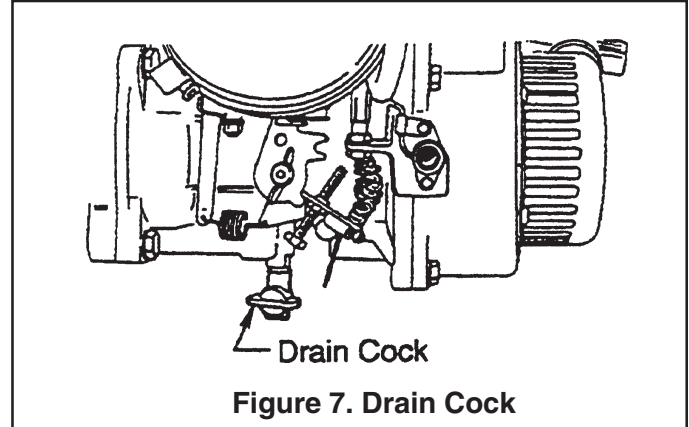
2. Close the choke lever Figure 3 and move the throttle lever to the "**Full Open**" position. Turning the choke lever 90 degrees clockwise closes the choke. In cold weather, start the unit with choke fully closed. In warm weather or when the engine is warm, the unit can be started with choke halfway or completely open.



3. Grip the recoil starter (Figure 6) handle and pull it until you feel a slight resistance. Then pull sharply and quickly. Return the recoil starter handle to the starter case before releasing.



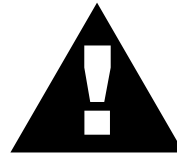
4. If engine fails to start, move the choke lever (Figure 3) to the half open position to avoid flooding.
5. Repeat steps 1 thru 4.
6. If the engine does not start after repeated attempts, check the spark plug for excess fuel. Clean and replace the spark plug as needed.
7. If the carburetor is flooded or the crankcase is loaded with fuel, open the drain plug as shown in Figure 7 and drain excess fuel.



Operation

1. To start the rammer tamping action, move the throttle lever quickly from **IDLE** to the **FULL OPEN** position (Figure 5). **DO NOT** move the throttle lever slowly as this may cause damage to the clutch or spring.

CAUTION:



Make sure that the throttle lever is moved to the **FULL OPEN** position. Operating the rammer at less than full speeds can result in damage to the clutch springs or foot

2. The MT-75H Tamping rammer is designed to run at 4,000 rpm. At optimum rpm the foot hits at the rate of 690 impacts per minute. Increasing throttle speed past factory set rpm does not increase impacts and may damage unit. The MT-75H is designed to advance while tamping. For faster advance, pull back slightly on the handle so that rear of foot contacts soil first.
3. To stop the tamping action, move throttle lever quickly from the **FULL OPEN** to **IDLE** position.

Stopping The Engine

Normal Shutdown

1. Move throttle lever quickly from the **FULL OPEN** to **IDLE** position (Figure 5) and run the engine for three minutes at low speed. After the engine **cools**, turn the engine start/stop switch to the "**STOP**" position (Figure 4) until engine comes to a complete stop.
2. Close the fuel shut- off valve by moving the strainer lever upward. See Figure 3.

Emergency Shutdown

2. Move the throttle lever quickly to the **IDLE** position, and turn the engine start/stop switch to the **STOP** position.

Maintenance

Perform the scheduled maintenance procedures as indicated:

DAILY

- Thoroughly remove dirt and oil from the engine and control area. Clean or replace the air cleaner elements as necessary. Check and retighten all fasteners as necessary. Check the spring box and bellows for oil leaks. Repair or replace as needed.

WEEKLY

- Remove the fuel filter cap and clean the inside of the fuel tank.
- Remove or clean the filter at the bottom of the tank.
- Remove and clean the spark plug, then adjust the spark gap to 0.02~0.03 inch (0.6~0.7 mm). This unit has electronic ignition, which requires no adjustments.
- Clean air cleaner cover.

200 - 300 HOURS (Air Cleaner Figure 8)

- Remove the element from the pre-cleaner at the top of the crankcase (body side) and clean it with cleaning oil (kerosene).
- Lubricate the top element (yellow) with 2~5cc of engine oil SAE-30.
- Lubricate bottom element (gray) with 13 ~15cc of engine oil SAE-30 and completely squeeze out the excess oil from the element before installing.

- The air cleaner on the engine side will hardly be contaminated, if it is, however after cleaning the element with kerosene, dip it in mixed oil consisting of 3 parts of gasoline and 1 part of engine oil. Then tightly squeeze outer primary element (sponge) and shake off well the inner secondary element before installing them.

200 - 300 HOURS (Oil Bath)

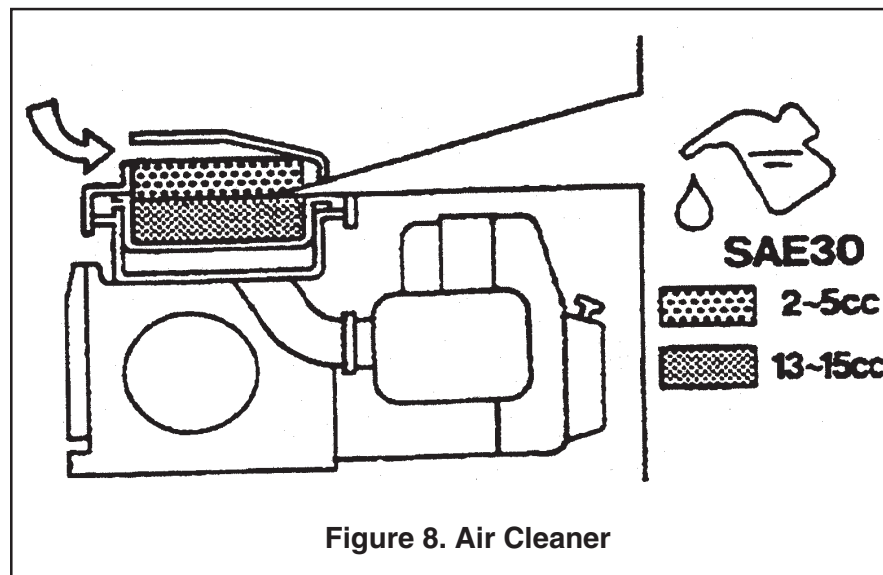
- Drain oil reservoir on foot housing. Refill with approximately 1.7 pt. (800cc) of 10W-30 motor oil. Oil should be midway in sight glass. Break in oil should be changed after first 50 hours.

Yearly

- Check the fuel line and the oil line regularly for damage and to ensure that there are no leaks.
- Replace the oil and fuel lines every two years to maintain the performance and flexibility lines.

Long Term Storage

- Drain fuel from fuel tank, fuel line and carburetor.
- Remove spark plug and pour a few drops of motor oil into cylinder. Crank engine 3 to 4 times so that oil reaches all internal parts.
- Clean exterior with a cloth soaked in clean oil.
- Store unit covered with plastic sheet in moisture free and dust free location out of direct sunlight.



MT-75H — TROUBLESHOOTING GUIDE

TABLE 3. ENGINE TROUBLESHOOTING

SYMPTOM	POSSIBLE PROBLEM	SOLUTION
Difficult to start		
Fuel is available but spark plug will not ignite. (Power available at high tension cable).	Ignition plug being bridge?	Check ignition system.
	Carbon deposit at ignition?	Clean or replace ignition.
	Short circuit due to defective insulators?	Replace insulators.
	Improper spark gap?	Set spark plug gap to the correct gap.
Fuel is available but spark plug will not ignite. (Power NOT available at high tension cable).	Short circuit at stop switch?	Check stop switch circuit. Replace stop switch if defective.
	Ignition coil defective?	Replace ignition coil.
Fuel is available and spark plug ignites (compression normal).	Muffler clogged with carbon deposits?	Clean or replace muffler.
	Mixed fuel quality is inadequate?	Check fuel to oil mixture.
	Fuel in use inadequate (water, dust)?	Flush fuel sytem and replace with fresh fuel.
	Air Cleaner clogged?	Clean or replace air cleaner.
Fuel is available and spark plug ignites (compression low).	Defective cylinder head gasket?	Tighten cylinder head bolts or replace head gasket.
	Cylinder worn?	Replace cylinder.
	Spark plug loose?	Tighen spark plug.
Operation not satisfactory		
Not enough power available (compression normal, no miss-firing).	Air cleaner clogged?	
	Air in fuel line?	Bleed (remove air) from fuel line.
	Fuel level in carbureator float chamber improper?	Adjust carbureator float
	Carbon deposits in cylinder?	Clean or replace cylinder
Not enough power available (compression normal, miss-firing).	Ignition coil defective?	Flush fuel sytem and replace with fresh fuel.
	Ignition plug often shorts?	Replace ignition wires, clean ignition.
	Fuel in use inadequate (water, dust)?	Flush fuel sytem and replace with fresh fuel.
Engine overheats.	Mixed fuel quality is inadequate?	Check fuel to oil mixture.
	Excessive carbon depostion in combustion chamber?	Clean or replace crankcase.
	Exhaust or muffler clogged with carbon.	Clean or replace muffler.
	Spark plug heat value incorrect?	Replace spark plug with correct type spark plug.

EXPLANATION OF CODE IN REMARKS COLUMN

How to read the marks and remarks used in this parts book.

Items Found In the “Remarks” Column

Serial Numbers-Where indicated, this indicates a serial number range (inclusive) where a particular part is used.

Model Number-Where indicated, this shows that the corresponding part is utilized only with this specific model number or model number variant.

Items Found In the “Items Number” Column

All parts with same symbol in the number column, *, #, +, %, or ■, belong to the same assembly or kit.

NOTE

If more than one of the same reference number is listed, the last one listed indicates newest (or latest) part available.

NOTE

The contents of this catalog are subject to change without notice.

MT-75H— SUGGESTED SPARE PARTS

MT-75H RAMMER 1 TO 3 UNITS

Qty.	P/N	Description
1	956300130	LEVER, THROTTLE ASSY
1	956106040	WIRE, THROTTLE ASSY
1	402010110	SPRING, RETURN
3	354030030	ELEMENT, YELLOW
3	354030040	ELEMENT, GRAY
1	954300390	FUEL COCK ASSEMBLY
3	301419750	FILTER, IN-LINE FUEL
2	954405080	STRAINER
1	0669900217	BUTTON, STOP (S/N C-1001 & BELOW)
3	0650140460	SPARK PLUG
1	0660000371	SWITCH, STOP (ABOVE S/N C-1001)
1	0430440033	CAP, FUEL TANK
3	1573620101	ELEMENT, SET ENGINE

MT-75H RAMMER 3 TO 5 UNITS

Qty.	P/N	Description
2	060404010	SEAL, OIL
1	050100950	O-RING, LOWER GUIDE CYLINDER
2	956300130	LEVER, THROTTLE ASSY
2	956106040	WIRE, THROTTLE ASSY
2	402010110	SPRING, RETURN
5	354030030	ELEMENT, YELLOW
5	354030040	ELEMENT, GRAY
1	354010010	BELLOWS
1	050201500	O-RING, UPPER GUIDE CYLINDER
2	354336350	CLAMP, BELLOWS
2	0430440033	CAP, FUEL TANK
2	954300390	FUEL COCK ASSEMBLY
5	301419750	FILTER, IN-LINE FUEL
3	954405080	STRAINER
2	0669900217	BUTTON, STOP (S/N C-1001 & BELOW)
5	1573620101	ELEMENT SET ENGINE
5	0650140460	SPARK PLUG
2	050931500	O-RING, MIDDLE GUIDE CYLINDER
2	0660000371	SWITCH, STOP (ABOVE S/N C-1001)

NOTE

Part number on this Suggested Spare Parts List may super cede/ replace the P/N shown in the text pages of this book.

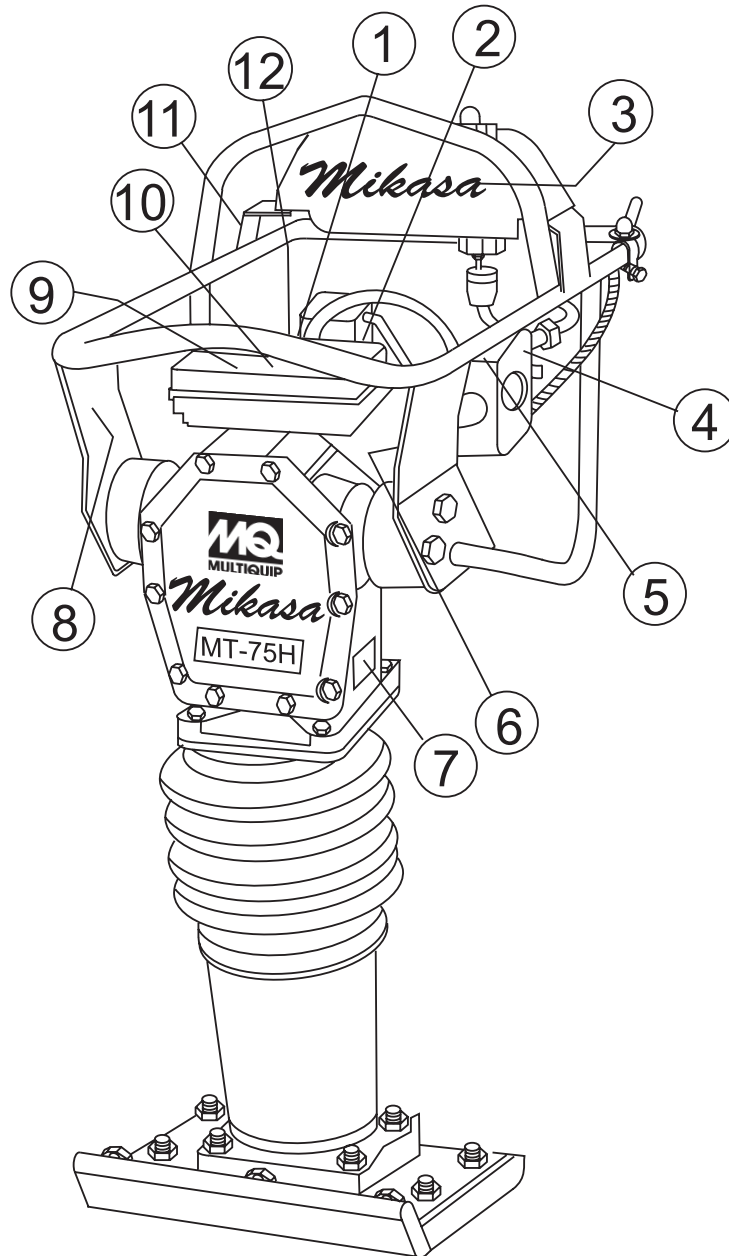
MT-75H RAMMER 5 TO 10 UNITS

Qty.	P/N	Description
4	060404010	SEAL, OIL
3	050100950	O-RING, LOWER GUIDE CYLINDER
4	956300130	LEVER, THROTTLE ASSY
4	956106040	WIRE, THROTTLE ASSY
4	402010110	SPRING, RETURN
10	354030030	ELEMENT, YELLOW
10	354030040	ELEMENT, GRAY
3	354010010	BELLOWS
6	050931500	O-RING, MIDDLE GUIDE CYLINDER
3	050201500	O-RING, UPPER GUIDE CYLINDER
6	354336350	CLAMP, BELLOWS
3	0430440033	CAP, FUEL TANK
3	954300390	FUEL COCK ASSEMBLY
10	301419750	FILTER, IN-LINE FUEL
4	954405080	STRAINER
3	0669900217	BUTTON, STOP (S/N C-1001 & BELOW)
10	1573620101	ELEMENT SET ENGINE
1	354211841	AIR CLEANER
3	1616230207	CARBURETOR KIT
2	1573500103	GASKET, INSULATOR, CARBURETOR
1	1611510101	GASKET, HEAD
1	1613520101	GASKET, EXHAUST
1	2263272008	GASKET, AIR CLEANER
10	0650140460	SPARK PLUG
3	0660000371	SWITCH, STOP (ABOVE S/N C-1001)

MT-75H RAMMER 10+ UNITS

Qty.	P/N	Description
6	060404010	SEAL, OIL
8	050100950	O-RING, LOWER GUIDE CYLINDER
6	956300130	LEVER, THROTTLE ASSY
6	956106040	WIRE, THROTTLE ASSY
6	402010110	SPRING, RETURN
16	354030030	ELEMENT, YELLOW
16	354030040	ELEMENT, GRAY
5	354010010	BELLOWS
8	050931500	O-RING, MIDDLE GUIDE CYLINDER
4	050201500	O-RING, UPPER GUIDE CYLINDER
10	354336350	CLAMP, BELLOWS
5	0430440033	CAP, FUEL TANK
4	954300390	FUEL COCK ASSEMBLY
12	301419750	FILTER, IN-LINE FUEL
6	954405080	STRAINER
4	0669900217	BUTTON, STOP (S/N C-1001 & BELOW)
16	1573620101	ELEMENT SET ENGINE
1	354211841	AIR CLEANER
5	1616230207	CARBURETOR KIT
8	1573500103	GASKET, INSULATOR, CARBURETOR
4	1611510101	GASKET, HEAD
4	1613520101	GASKET, EXHAUST
4	2263272008	GASKET, AIR CLEANER
16	0650140460	SPARK PLUG
4	0660000371	SWITCH, STOP (ABOVE S/N C-1001)
1	1616230100	CARBURETOR ASSEMBLY
1	1615010400	RECOIL STARTER ASSEMBLY

MT-75H — NAME PLATES AND DECALS



MT-75H — NAME PLATES AND DECALS

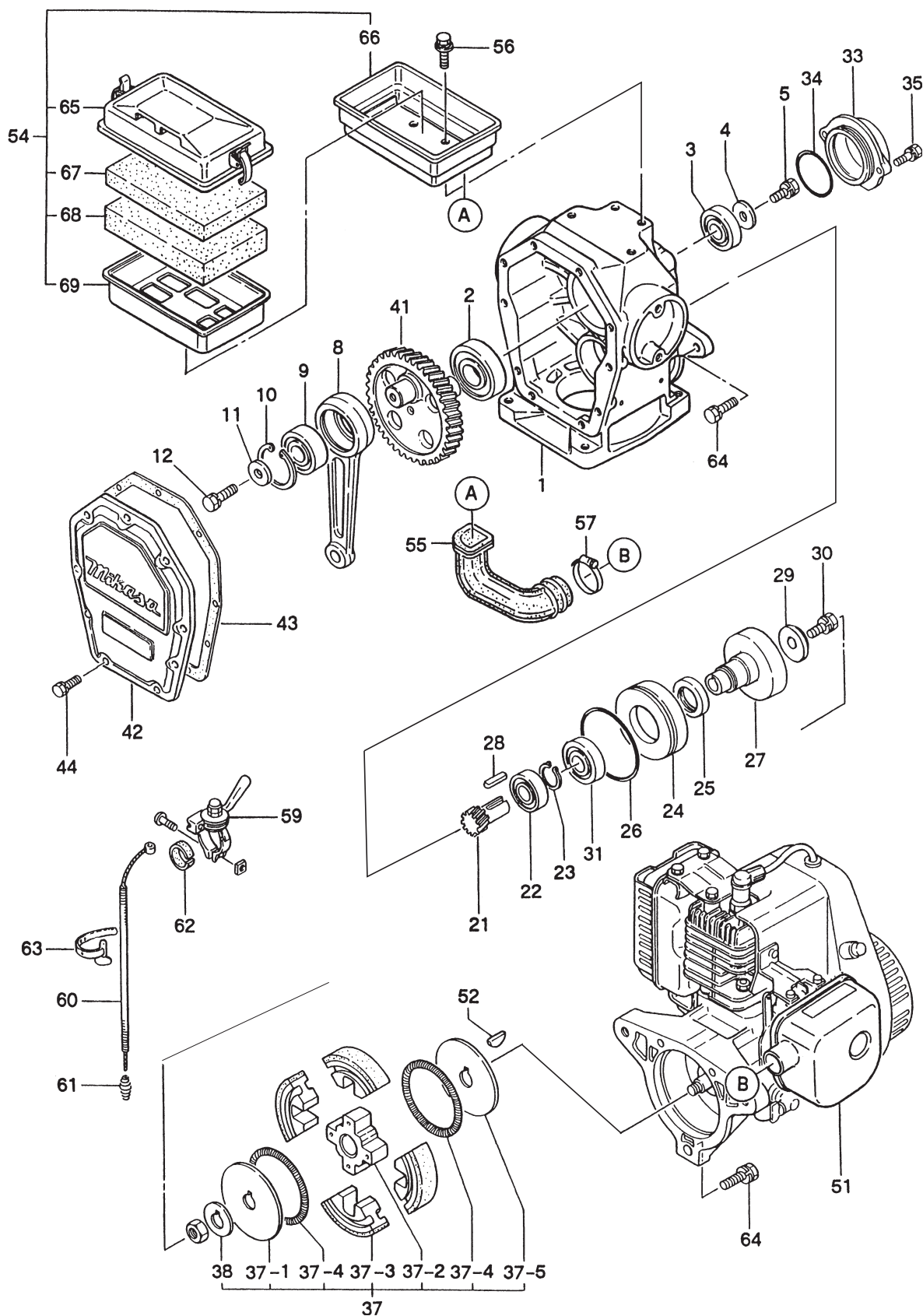
NAME PLATE AND DECALS

NO	PART NO	PART NAME	QTY.	REMARKS
1*	920202930	DECAL: START SWITCH	1	NPA-293
2*	920200900	DECAL: 3750 ~ 3950 RPM	1	NPA-90
3*	920106460	DECAL: MIKASA	1	
4*	920203980	DECAL ELEMENT SET	1	NPA-398
5*	0732004430	DECAL: START SWITCH	1	
6*	920203290	DECAL: CAUTION	1	NPA-329
7		PLATE, SERIAL NO.	1	CONTACT MQ SERVICE DEPT. W/MODEL & S/N
8*	920107000	DECAL: OIL	1	NP-700
9*	920204370	DECAL: PRE-CLEANER	1	NPA-437
10*	920206240	DECAL: START/STOP ENGINE	1	NPA-624
11*	920203330	DECAL: EAR PROTECTION	1	NPA-333
12*	920203990	DECAL: CLOSE FUEL COCK	1	NPA-399
	DCLMT75H	KIT, DECAL	1	INCLUDES ITEMS W/*

SEE DECAL ILLUSTRATIONS ON PAGE 8.

MT-75H — CRANKCASE AND ENGINE

CRANKCASE AND ENGINE



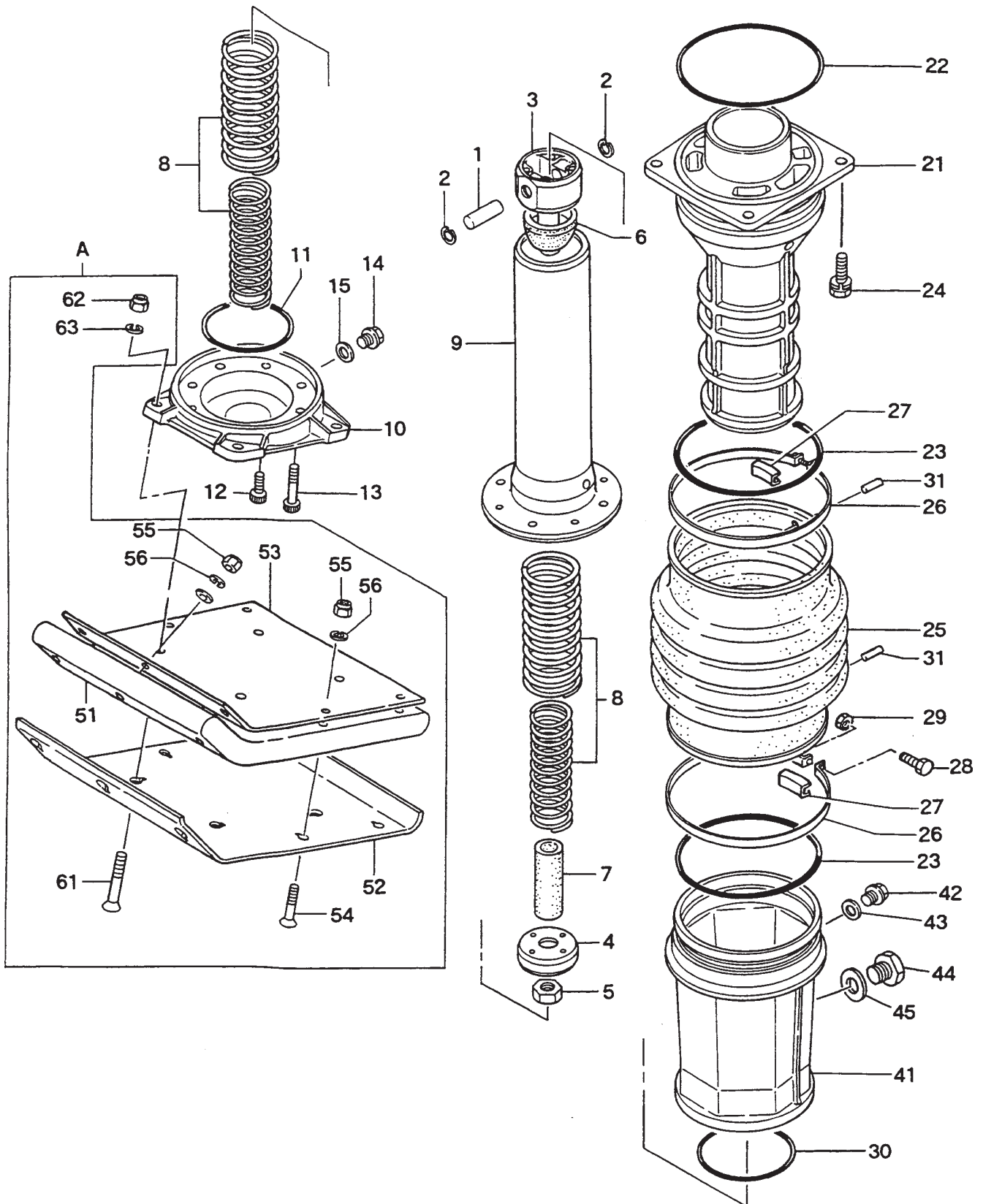
MT-75H — CRANKCASE AND ENGINE

CRANKCASE AND ENGINE

<u>NO</u>	<u>PART NO</u>	<u>PART NAME</u>	<u>QTY</u>	<u>REMARKS</u>
1	355113110	CRANK CASE	1	
2	040006207	BEARING 6207	1	
3	0600200020	BEARING 6304	1	REPLACES 040006204
4	952400130	WASHER	1	
6	011708025	BOLT 8X25 H, SW	1	REPLACES 002210825
8	355334280	CONNECTING ROD	1	
9	040006304	BEARING 6204	1	
10	080100520	STOP RING R-52	1	
11	952400130	WASHER 9304	1	
12	011708025	BOLT 8X25 H, SW	1	REPLACES 002210825
21	355447200	PINON	1	
22	0600200020	BEARING 6204	1	REPLACES 040006204
23	080200350	STOP RING S-35	1	
24	352441340	SPACER	1	
25	060404010	OIL SEAL TC -40528	1	
26	050100950	O-RING G-95	1	
27	355447210	CLUTCH DRUM	1	
28	952405610	KEY 5X5X19R	1	
29	952405490	LOCK WASHER	1	
30	011008020	BOLT 8X20 H, SW	1	REPLACES 002210820
31	041006007	BEARING 6007Z	1	
33	355447230	BEARING COVER	1	
34	050300440	O-RING S-44	1	
35	002210820	BOLT 8X22 H, SW	2	REPLACES 002210820
37	301421363	CLUTCH ASSY	1	INCLUDES ITEMS W/*
37-1*	943060020	CLUTCH GUIDE (B)	1	
37-2*	943050050	CLUTCH BOSS	1	
37-3*	943020020	CLUTCH SHOE	4	
37-4*	943030020	CLUTCH SPRING	2	
37-5*	943060010	CLUTCH GUIDE (A)	1	REPLACES 94306060
38*	301010210	LOCK WASHER,CLUTCH	1	
41	355334290	CRANK GEAR	1	
42	355010010	FRONT COVER	1	
43	352444450	PACKING , FRONT COVER	1	
44	011706020	BOLT 6X20 H, SW	1	REPLACES 002210620
51	911101214	ENGINE AY EC12G (LC)	1	REPLACES 911101206
52	0053204201	WOODRUFF KEY	1	
54	354211841	AIR CLEANER ASSY.	1	INCLUDES ITEMS W/#
55	354330590	INTAKE PIPE	1	
56	011008020	BOLT 8X20 H, SW	4	REPLACES 002210820
57	507010110	CLAMP TC-200	1	
59	956300130	THROTTLE LEVER ASSY.	1	
60	956106040	THROTTLE WIRE	1	
61	402010110	RETURN SPRING	1	REPLACES 301010950
62	959403750	RUBBER SLIP STOP	1	
63	303010450	BAND	1	
64	012010040	BOLT 10X40	3	REPLACES 012710040 & 002211040
65#	354030011	BODY / W -CLEANER	1	
66#	354030020	BACK PLATE	1	
67#	354030030	ELEMNT , YELLOW	1	
68#	354030040	ELEMENT , GRAY	1	
69#	354030050	ELEMENT FRAME	1	

MT-75H — GUIDE CYLINDER AND FOOT

GUIDE CYLINDER AND FOOT



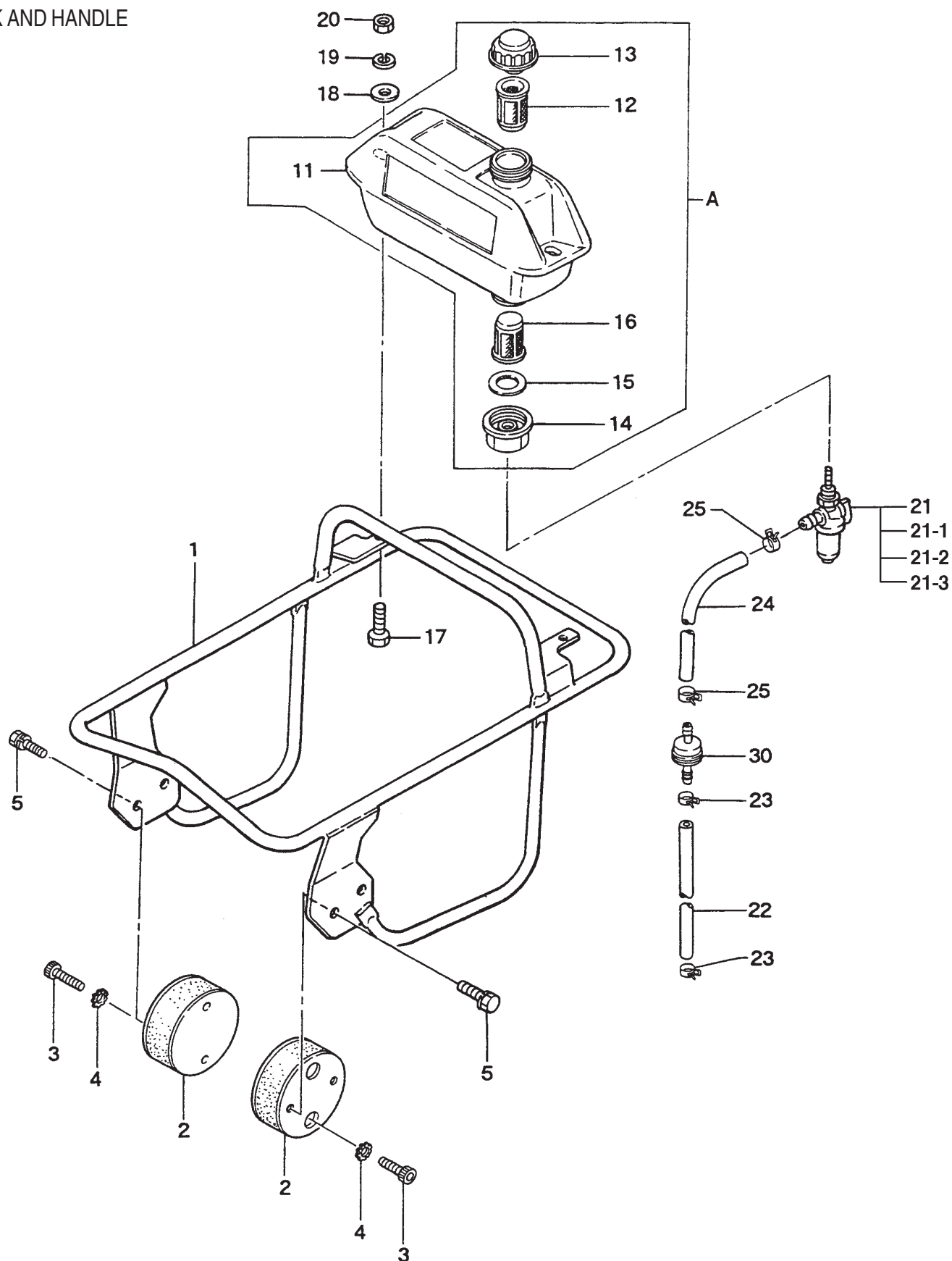
MT-75H — GUIDE CYLINDER AND FOOT ASSY.

GUIDE CYLINDER AND FOOT

NO	PART NO	PART NAME	QTY	REMARKS
A		FOOT ASSY.	1	INCLUDES ITEMS W/* CONTACT UNIT SALES ACCESSORY ITEM. REPLACES 352910033
1	352423290	PISTON PIN	1	
2	080100150	STOP RING	2	
3	355334300	PISTON ROD	2	
4	355447240	PISTON END	1	
5	020316130	NUT M16	1	
6	355447250	STOPPER, UPPER	1	
7	355447260	STOPPER, LOWER	1	
8	355447270	MAIN SPRING	2	
9	355334310	SPRING CYLINDER	1	
10	355213000	FOOT PLATE	1	
11	050100900	O-RING G-90	1	
12	014210020	SOCKET HEAD BOLT 10X20 T	4	
13	014210040	SOCKET HEAD BOLT 10X40 T	4	
14	953405270	PLUG 1/4X14 L	1	
15	953405260	PACKING 1/4	1	
21	355213010	GUIDE CYLINDER	1	
22	050201500	O-RING P-150	1	
23	050931500	O-RING JAS03150	2	
24	012710035	BOLT 10X35	4	
25	354010010	BELLOWS (L) ORANGE	1	REPLACES 3543372000
26	354336350	BELLOWS CLAMP	2	REPLACES 354329380
27	354442340	BAND GUIDE , BELLOWS	2	
28	011008040	BOLT 8X40 H	2	REPLACES 001210840
30	050100950	O-RING G-95	1	
31	354446170	PIN 6D-8.5L	2	
41	355113130	PROTECTION SLEEVE	1	
42	953405270	PLUG 1/4X14 13L	1	
43	953405260	PACKING 1/4 (CU)	1	
44	959010150	LEVEL GAUGE , PLUG TYPE	1	
45	953404670	COPPER PACKING 17X25.5X1	1	
51*	352108220	FOOT 285B 331L	1	
52*	352108230	METAL SHEET 285W	1	
53*	352333380	FOOT COVER	1	
54*	015110055	SUNK HEAD BOLT 1055 H	7	REPLACES 001611051
55*	021110120	NYLON NUT M 10	7	REPLACES 022711012
56*	030210250	SW M10	7	
61*	015112060	SUNK HEAD BOLT 12X65 H	4	REPLACES 001611253
62*	021112140	NYLON NUT M	12	REPLACES 022711214
63*	030212300	SW M12	4	

MT-75H — TANK AND HANDLE ASSY.

TANK AND HANDLE



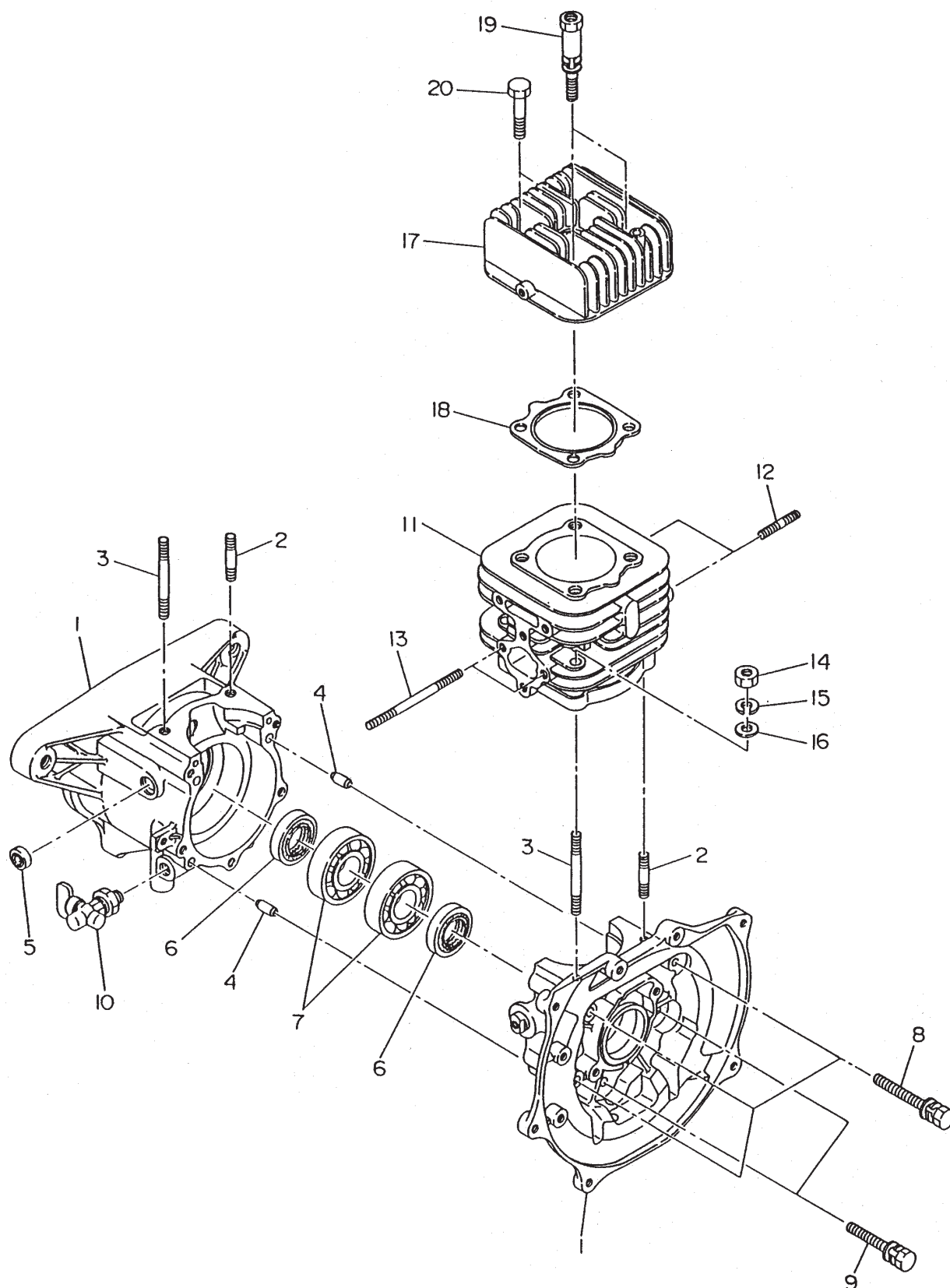
MT-75H — TANK AND HANDLE ASSY.

TANK AND HANDLE

<u>NO</u>	<u>PART NO</u>	<u>PART NAME</u>	<u>QTY</u>	<u>REMARKS</u>
A	353910010	FUEL TANK AY (P)	1	INCLUDES ITEMS W/*
1	354111831	HANDLE	1	
2	351319900	SHOCK ABSORBER	2	
3	014210020	SOCKET HEAD BOLT 10X20 T	4	REPLACES 001521020
4	033121009	TOOTHED LOCK WASHER M10	4	
5	012210020	BOLT 10X20 H, SW	4	REPLACES 002211020
11*	351110650	FUEL TANK 3L (P)	1	
12*	954404890	FILTER , TANK	1	
13*	0430440033	FUEL TANK CAP	1	
14*	351437785	HOLDER COCK.....	1	REPLACES 351437780
15*	351439290	PACKING COCK HOLDER	1	
16*	954405080	STRAINER (100)	1	
17	011208030	BOLT 8X30 T	2	REPLACES 001220830
18	952401450	WASHER 8.5X22X3	2	
19	030208200	SW M8	2	
20	022710809	NYLON NUT M8	2	
21	954300390	FUEL COCK AY	1	INCLUDES ITEMS W/#
21-1#	0642001410	CUP	1	
21-2#	0642001420	SCREEN	1	
21-3#	0642001430	RUBBER PACKING	1	
22	301420330	FUEL HOSE B-150	1	
23	954404590	HOSE BAND 9.5D	2	
24	351436350	FUEL HOSE R-150	1	
25	301420730	HOSE BAND (8)	2	REPLACES 954403030
30	301419750	FUEL FILTER	1	

EC-12G ENGINE (ROBIN) — CRANKCASE AND CYL. HD. ASSY.

CRANKCASE AND CYLINDER HEAD



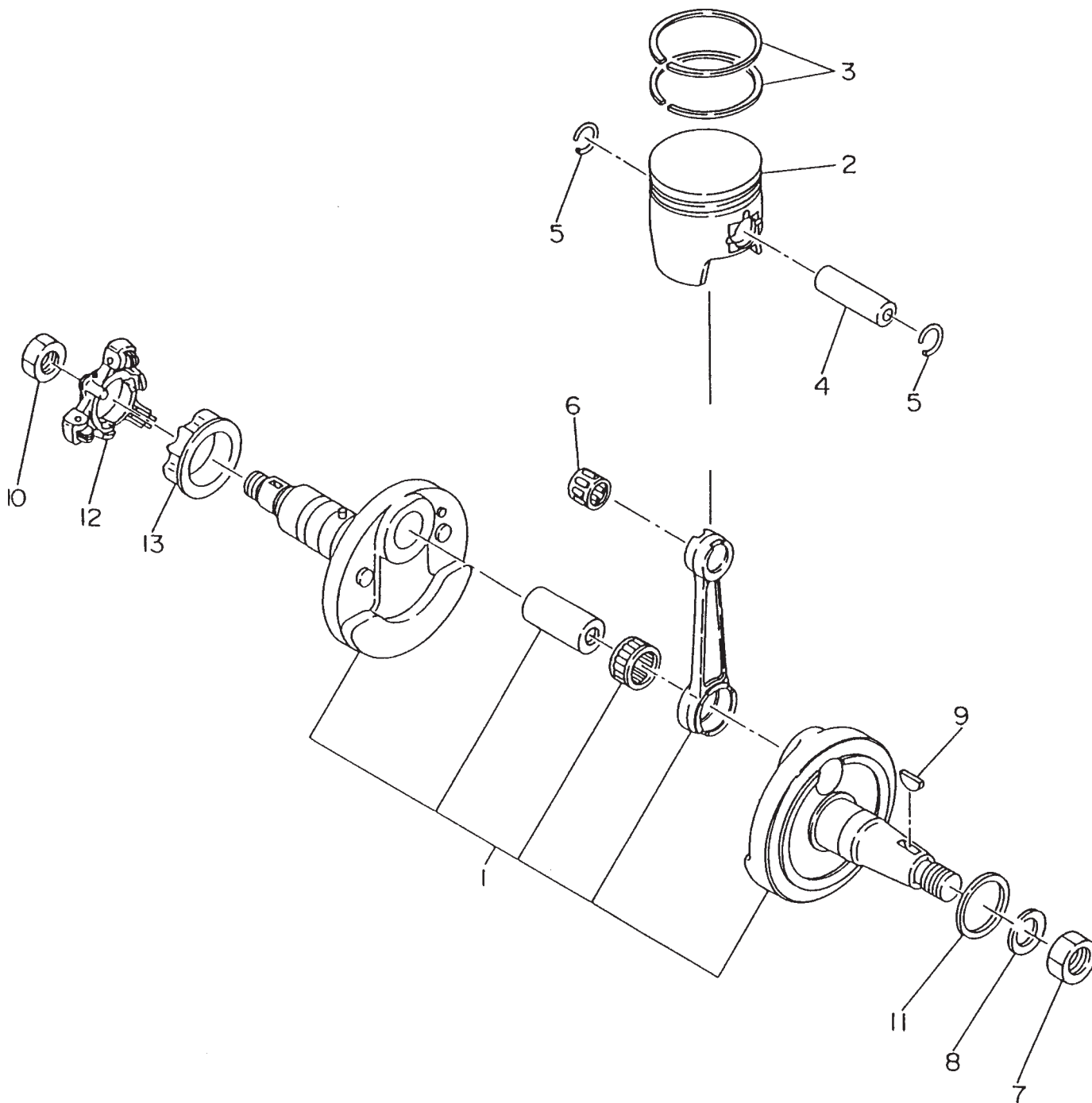
EC-12G ENGINE (ROBIN) — CRANKCASE AND CYL. HD. ASSY.

CRANKCASE AND CYLINDER HEAD

<u>NO</u>	<u>PART NO</u>	<u>PART NAME</u>	<u>QTY</u>	<u>REMARKS</u>
1	1611040101	CRANKCASE COMPL.	1	INCLUDES ITEMS W/*
2*	0013208401	STUD	2	
3*	0013208651	STUD	2	
4*	0310060010	DOWEL PIN	2	
5*	0440080010	OIL SEAL 7.4X14X4	1	
6*	0440250180	OIL SEAL EC13	2	
7*	0600250010	BALL BEARING 6205C3	2	
8*	0011406550	BOLT AND WASHER ASSY.	3	
9*	0011406400	BOLT AND WASHER ASSY.	2	
10	0643000101	DRAIN COCK	1	
11	1611240101	CYLINDER COMPL.	1	INCLUDES ITEMS W/#
12#	0013208351	STUD	2	
13#	0105060190	STUD	2	REPLACES 0105060191
14	020108060	NUT	4	REPLACES 0021808000
15	030208200	SPRING WASHER	4	
16	0031008000	WASHER	4	
17	1571310113	CYLINDER HEAD	1	
18	1611510101	GASKET COMPL. (HEAD)	1	REPLACES 1611510111
19	0130080071	BOLT AND WASHER ASSY.	2	
20	0011408350	BOLT AND WASHER ASSY.	2	

EC-12G ENGINE (ROBIN) — CRANKSHAFT AND PISTON ASSY.

CRANKCASE AND PISTON



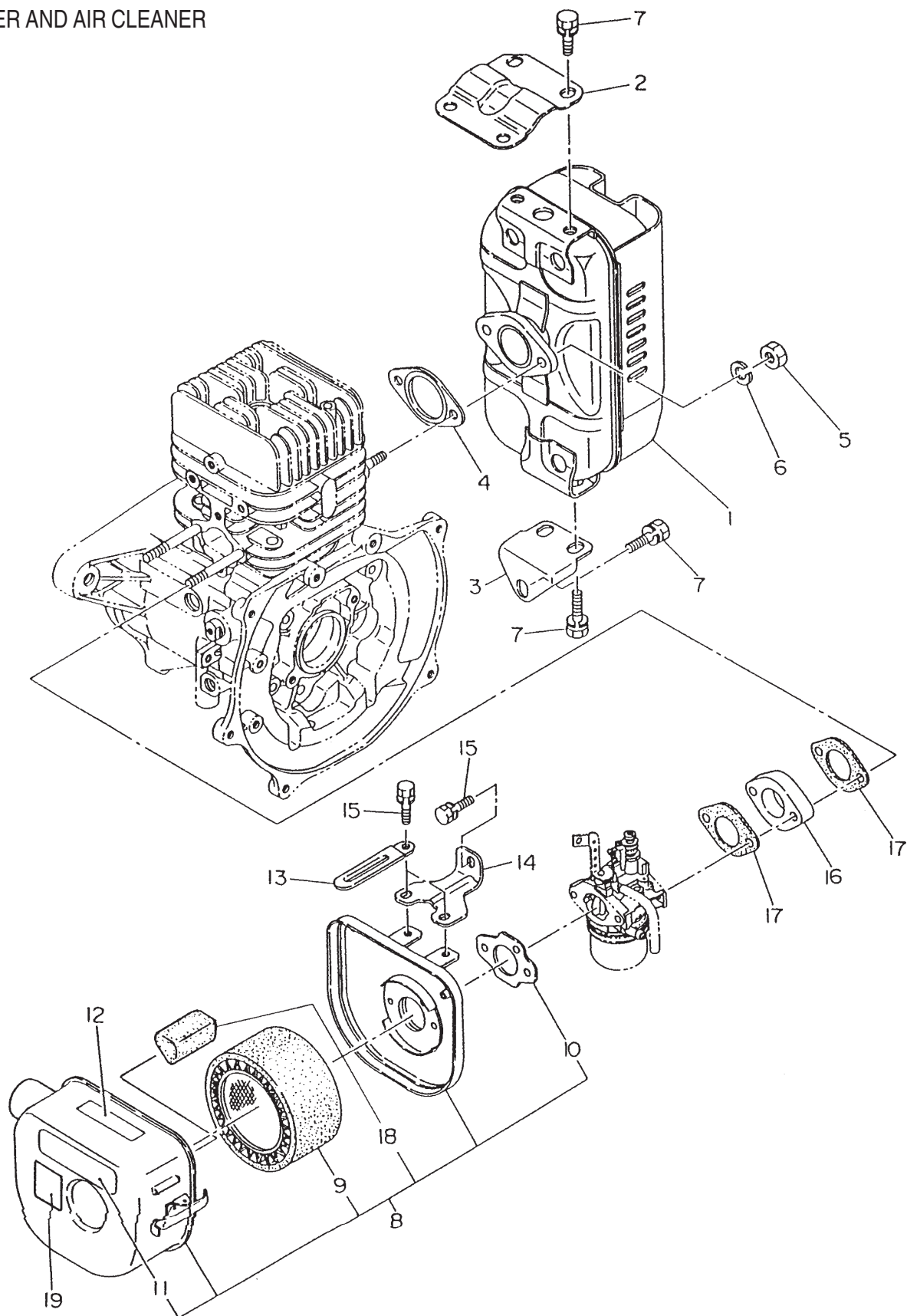
EC-12G ENGINE (ROBIN) — CRANKSHAFT AND PISTON ASSY.

CRANKSHAFT AND PISTON

<u>NO</u>	<u>PART NO</u>	<u>PART NAME</u>	<u>QTY</u>	<u>REMARKS</u>
1	1612040100	CRANKSHAFT AY	1	
2	1612340101	PISTON COMPL. STD	1	
2	1612340201	PISTON COMPL. 0.25 OS	1	
2	1612340301	PISTON COMPL. 0.5 OS	1	
3	1612350107	PISTON RING SET STD.	1	
3	1612350207	PISTON RING SET 0.25 OS	1	
3	1612350307	PISTON RING SET 0.5 OS	1	
4	1572330103	PISTON PIN	1	
5	056-5120010	CLIP	2	
6	0610120010	NEEDLE BEARING	1	
7	0021714000	NUT	1	
8	0032014000	SPRING WASHER	1	
9	0053204201	WOODRUFF KEY	1	
10	0173120010	LOCK NUT	1	
11	1612500103	SPACER 0.1T	3	
11	1612500203	SPACER 0.3T	1	
12	1574170101	GOVENOR PLATE COMPL.	1	
13	1574190103	GOVENOR SLEEVE	1	

EC-12G ENGINE (ROBIN) — MUFFLER AND AIR CLEANER

MUFFLER AND AIR CLEANER



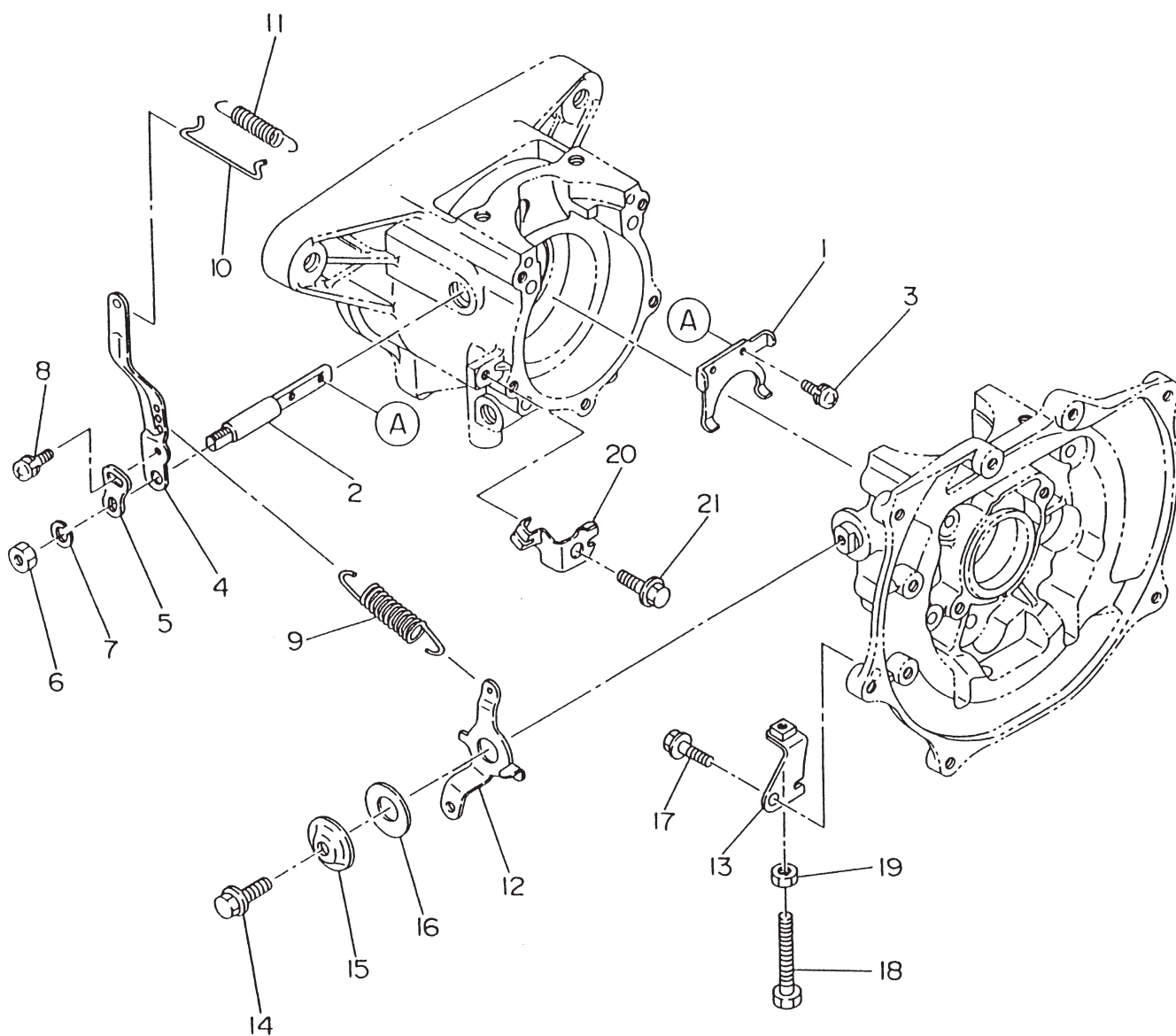
EC-12G ENGINE (ROBIN) — MUFFLER AND AIR CLEANER

MUFFLER AND AIR CLEANER

<u>NO</u>	<u>PART NO</u>	<u>PART NAME</u>	<u>QTY</u>	<u>REMARKS</u>
1	1613010111	MUFFLER COMPL.	1	
2	1613500101	MUFFLER BRACKET	1	
3	1613510101	MUFFLER BRACKET	1	
4	1613520101	GASKET COMPL. (EXHAUST)	1	
5	020108060	NUT	2	REPLACES 0021908000
6	030208200	SPRING WASHER	2	REPLACES 0032008000
7	0011308160	BOLT AND WASHER ASSY.	7	
8	1613260130	AIR CLEANER ASSY.	1	REPLACES 1613260100
8	1613270310	AIR CLEANER ASSY.	1	INCLUDES ITEMS W/* REPLACES 1613270300
9*	1573620101	ELEMENT SET	1	
10*	2263272008	GASKET (AIR CLEANER)	1	
11*#	1073273308	LABEL	1	
12#	0732004430	LABEL (CHOKE)	1	REPLACES 0732001930
13	1507520103	CLAMP	1	
14	1613600111	CLEANER BRACKET	1	
15	0016606120	BOLT AND WASHER ASS'Y	3	REPLACES 0011006120
16	1573290103	INSULATOR	1	
17	1573500103	GASKET, INSULATOR	2	
18*	1613261008	ELEMENT	1	
19	920203980	DECAL, ELEMENT SET	1	INCLUDES ITEMS W/#

EC-12G ENGINE (ROBIN) — GOVERNOR

GOVERNOR



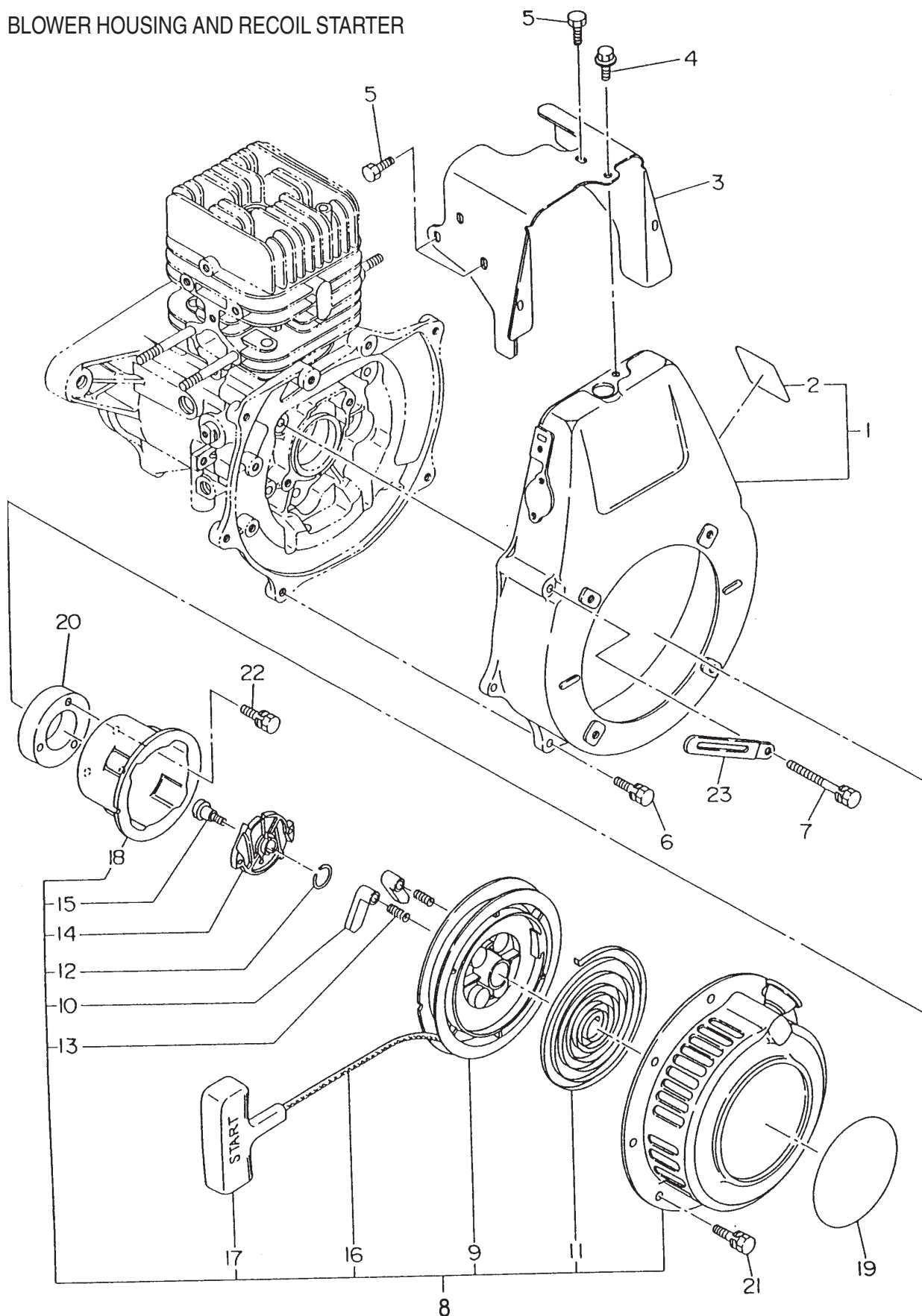
EC-12G ENGINE (ROBIN) — GOVERNOR

GOVERNOR

<u>NO</u>	<u>PART NO</u>	<u>PART NAME</u>	<u>QTY</u>	<u>REMARKS</u>
1	1574210103	GOVERNOR YOKE	1	
2	1064220103	GOVERNOR SHAFT	1	REPLACES 1574220103
3	0043504060	SCREW	2	
4	1614230101	GOVERNOR LEVER	1	
5	1064240101	ADJUSTING PLATE	1	REPLACES 1574240101
6	0021906000	NUT	1	
7	030206150	SPRING WASHER	1	REPLACES 0032006000
8	0043504080	SCREW AND WASHER ASS'Y	1	REPLACES 0043604080
9	1614250113	GOVERNOR SPRING	1	REPLACES 1614250101
10	2274270101	GOVERNOR ROD	1	
11	1064280113	ROD SPRING	1	
12	1614341001	SPEED CONTROL COMPL.	1	
13	1614350111	STOP PLATE COMPL.	1	
14	0116060050	FLANGE BOLT	1	REPLACES 0110060010
15	1574510113	COVER	1	REPLACES 1574510101
16	1574610103	WASHER	1	
17	0110060050	FLANGE BOLT	1	REPLACES 0110060010
18	0016506350	BOLT	1	
19	0021706000	NUT	1	
20	1614420101	WIRE BRACKET	1	
21	0110060050	FLANGE BOLT	1	REPLACES 0110060010

EC-12G ENGINE (ROBIN) — BLOWER HOUSING/RECOIL STR.

BLOWER HOUSING AND RECOIL STARTER



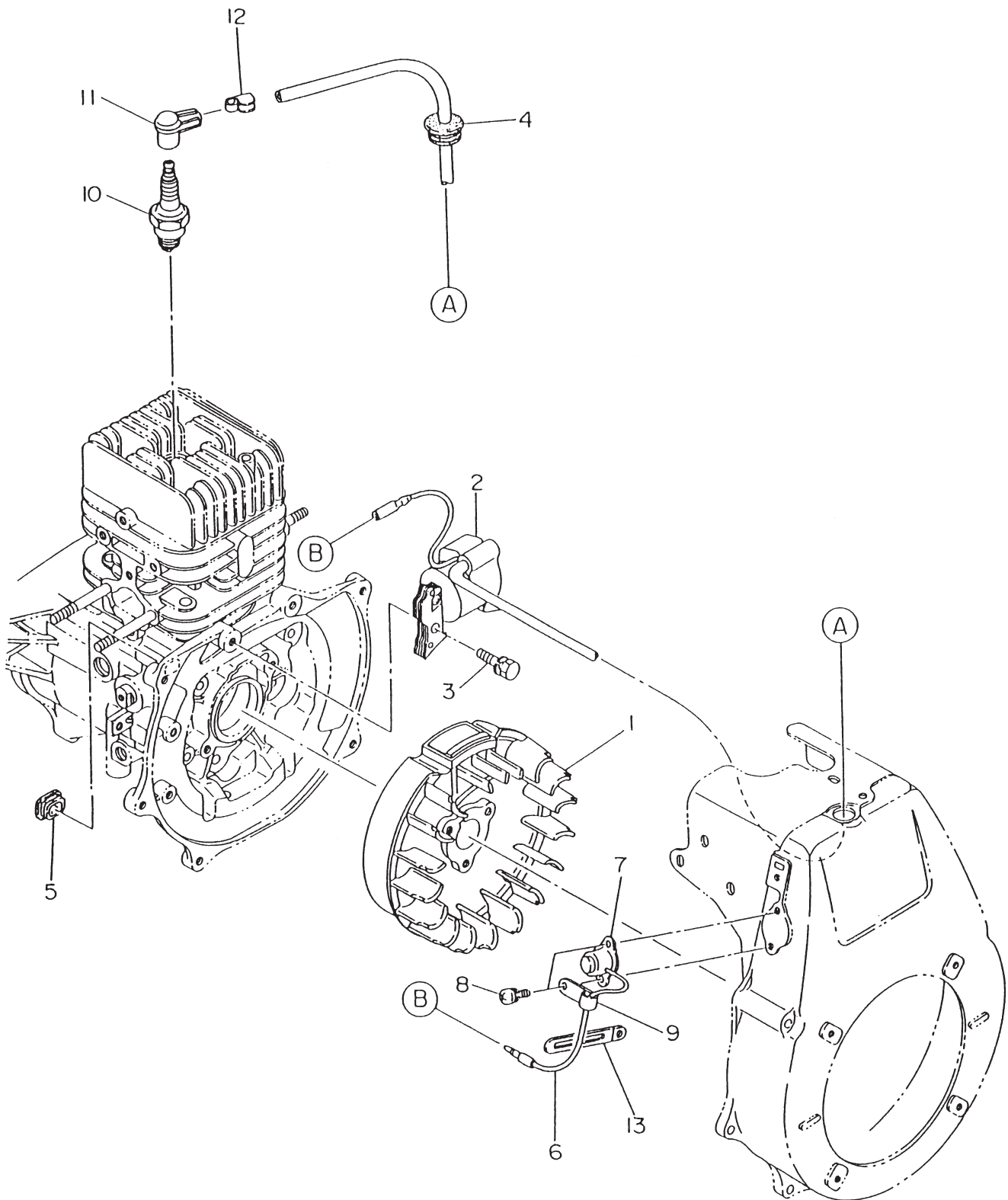
EC-12G ENGINE (ROBIN) — BLOWER HOUSING/RECOIL STR.

BLOWER HOUSING AND RECOIL STARTER

<u>NO</u>	<u>PART NO</u>	<u>PART NAME</u>	<u>QTY</u>	<u>REMARKS</u>
1	1615110701	BLOWER HOUSING COMPL.	1	INCLUDES ITEM W/* REPLACES 161511001
2*	1619180203	LABEL, ENGINE NAME	1	
3	1615260123	CYLINDER BAFFLE	1	
4	0110060050	FLANGE BOLT	2	REPLACES 0110060010
5	0152060070	TAPPING BOLT	3	
6	0011406200	BOLT AND WASHER ASSY.	3	
7	0011406550	BOLT AND WASHER ASSY.	2	
8	1615010400	RECOIL STARTER ASSY.	1	INCLUDES ITEM W/#
9#	1615012008	REEL	1	
10#	1615012508	RATCHET	2	
11#	2155051508	SPIRAL SPRING	1	
12#	2275013108	FRICTION SPRING	1	
13#	2275013508	RETURN SPRING	2	
14#	1615015008	RATCHET GUIDE	1	
15#	2275015208	SET SCREW	1	
16#	1615011008	STARTER ROPE	1	
17#	2065010108	STARTER KNOB	1	REPLACES 2365010108
18#	1615014518	STARTER PULLEY	1	
19	920100240	DECAL, (M-MARK)	1	
20	1615500103	PULLEY SPACER	1	
21	0016606120	BOLT AND WASHER ASSY.	4	REPLACES 0011006120
22	0011306250	BOLT AND WASHER ASSY.	3	
23	1507520103	CLAMP	1	

EC-12G ENGINE (ROBIN) — ELECTRIC DEVICE

ELECTRIC DEVICE



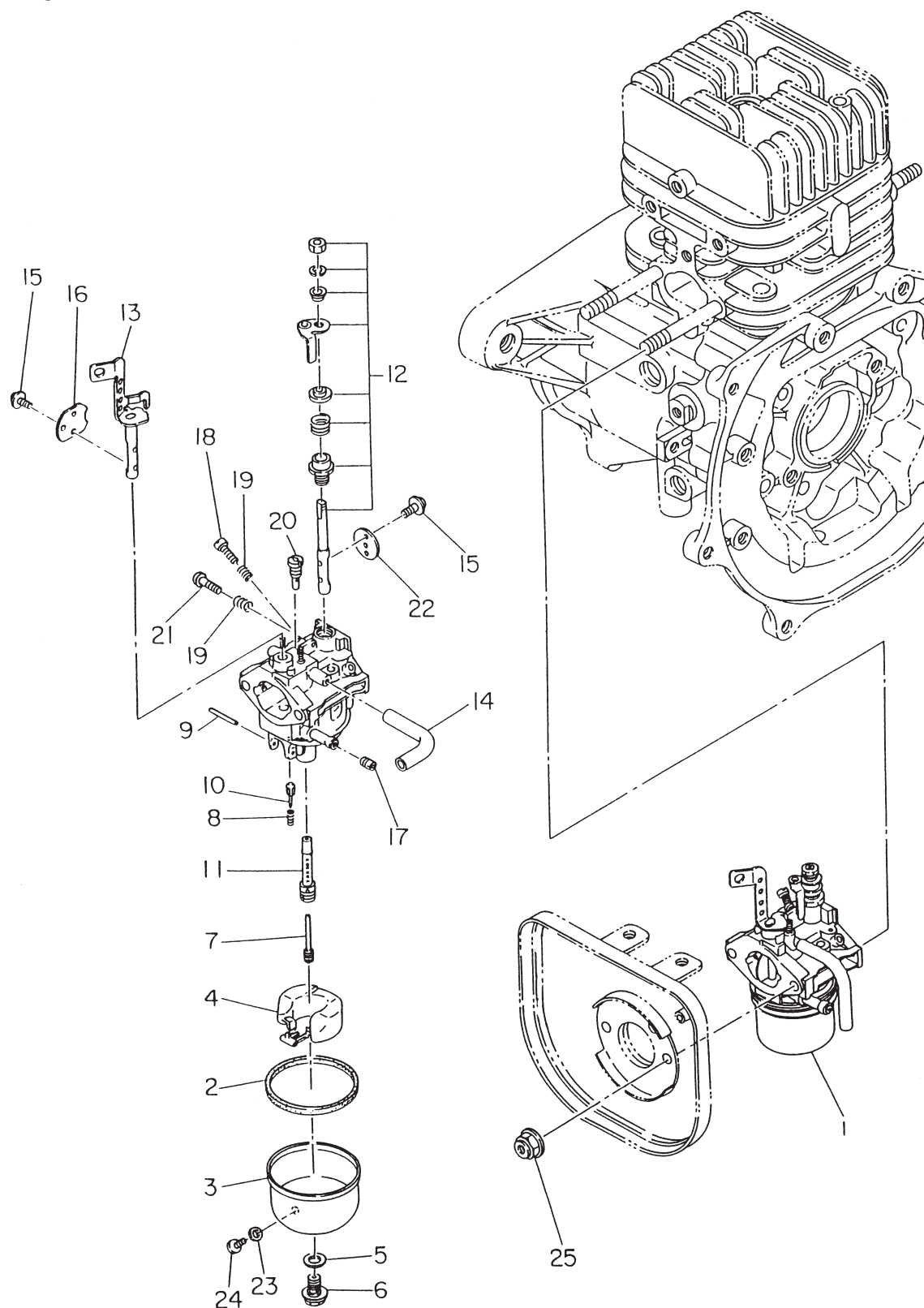
EC-12G ENGINE (ROBIN) — ELECTRIC DEVICE

ELECTRIC DEVICE

<u>NO</u>	<u>PART NO</u>	<u>PART NAME</u>	<u>QTY</u>	<u>REMARKS</u>
1	1617010100	MAGNETO ASS'Y	1	INCLUDES ITEMS W/*
1*	1617012008	FLYWHEEL COMPL.	1	
2*	1617013008	IGNITION COIL, COMPL.	1	
3	0011006200	BOLT AND WASHER AY	2	
4	1617500103	GROMMET, HIGH	1	
5	1577500203	GROMMET	1	
6	1067330101	WIRE COMPL.	1	COMES WITH STOP BUTTON
7	0669900217	STOP BUTTON	1	REPLACES 0662000070
8	0043504080	SCREW AND WASHER ASS'Y	2	
9	0566030010	CLAMP	1	
10	0650140460	SPARK PLUG	1	
11	2307510113	SPARK PLUG CAP	1	
12	0659000010	PLUG TERMINAL	1	
13	1507520103	CLAMP	1	

EC-12G ENGINE (ROBIN) — CARBURETOR

CARBURETOR



EC-12G ENGINE (ROBIN) — CARBURETOR

CARBURETOR

<u>NO</u>	<u>PART NO</u>	<u>PART NAME</u>	<u>QTY</u>	<u>REMARKS</u>
1	1616230100	CARBURETOR ASSY.	1	INCLUDES ITEM W/* REPLACES 1616230120
2*	2366254008	PACKING	1	
3*	1616235008	FLOAT BODY	1	
4*	5806083350	FLOAT	1	REPLACES 2366250508
5*	2366245008	PACKING	1	
6*	1616235108	BOLT	1	
7*	2266240008	MAIN JET	1	
8*	2366244508	SPRING	1	
9*	2146251508	FLOAT PIN	1	
10*	1616235208	NEEDLE	1	
11*	1616244008	MAIN NOZZLE	1	
12*	1616253008	SHAFT ASSY. (THROTTLE)	1	
13*	1616252038	SHAFT ASSY. (CHOKE)	1	REPLACES 1616252008
14*	1616235308	HOSE	1	
15*	2346245008	SCREW	4	
16*	5806083310	CHOKE VALVE	1	REPLACES 1616252508
17*	1616240008	MAIN JET	1	
18*	2136239008	ADJUSTER	1	
19*	2096244508	SPRING	2	REPLACES 2106231808
20*	2076242008	PILOT JET	1	
21*	5416002230	SCREW	1	REPLACES 1066239308
22*	1616253508	THROTTLE VALVE	1	
23*	2366254108	PACKING	1	
24*	2366235008	SCREW	1	
25	0176060020	SELF LOCK NUT	2	

PAYMENT TERMS

Terms of payment for parts are net 30 days.

FREIGHT POLICY

All parts orders will be shipped collect or prepaid with the charges added to the invoice. All shipments are F.O.B. point of origin. Multiquip's responsibility ceases when a signed manifest has been obtained from the carrier, and any claim for shortage or damage must be settled between the consignee and the carrier.

MINIMUM ORDER

The minimum charge for orders from Multiquip is \$15.00 net. Customers will be asked for instructions regarding handling of orders not meeting this requirement.

RETURNED GOODS POLICY

Return shipments will be accepted and credit will be allowed, subject to the following provisions:

1. A Returned Material Authorization must be approved by Multiquip prior to shipment.
2. To obtain a Return Material Authorization, a list must be provided to Multiquip Parts Sales that defines item numbers, quantities, and descriptions of the items to be returned.
 - a. The parts numbers and descriptions must match the current parts price list.
 - b. The list must be typed or computer generated.
 - c. The list must state the reason(s) for the return.
 - d. The list must reference the sales order(s) or invoice(s) under which the items were originally purchased.
 - e. The list must include the name and phone number of the person requesting the RMA.
3. A copy of the Return Material Authorization must accompany the return shipment.
4. Freight is at the sender's expense. All parts must be returned freight prepaid to Multiquip's designated receiving point.

5. Parts must be in new and resalable condition, in the original Multiquip package (if any), and with Multiquip part numbers clearly marked.
6. The following items are not returnable:
 - a. Obsolete parts. (If an item is in the price book and shows as being replaced by another item, it is obsolete.)
 - b. Any parts with a limited shelf life (such as gaskets, seals, "O" rings, and other rubber parts) that were purchased more than six months prior to the return date.
 - c. Any line item with an extended dealer net price of less than \$5.00.
 - d. Special order items.
 - e. Electrical components.
 - f. Paint, chemicals, and lubricants.
 - g. Decals and paper products.
 - h. Items purchased in kits.
7. The sender will be notified of any material received that is not acceptable.
8. Such material will be held for five working days from notification, pending instructions. If a reply is not received within five days, the material will be returned to the sender at his expense.
9. Credit on returned parts will be issued at dealer net price at time of the original purchase, less a 15% restocking charge.
10. In cases where an item is accepted, for which the original purchase document can not be determined, the price will be based on the list price that was effective twelve months prior to the RMA date.
11. Credit issued will be applied to future purchases only.

PRICING AND REBATES

Prices are subject to change without prior notice. Price changes are effective on a specific date and all orders received on or after that date will be billed at the revised price. Rebates for price declines and added charges for price increases will not be made for stock on hand at the time of any price change.

Multiquip reserves the right to quote and sell direct to Government agencies, and to Original Equipment Manufacturer accounts who use our products as integral parts of their own products.

SPECIAL EXPEDITING SERVICE

A \$35.00 surcharge will be added to the invoice for special handling including bus shipments, insured parcel post or in cases where Multiquip must personally deliver the parts to the carrier.

LIMITATIONS OF SELLER'S LIABILITY

Multiquip shall not be liable hereunder for damages in excess of the purchase price of the item with respect to which damages are claimed, and in no event shall Multiquip be liable for loss of profit or good will or for any other special, consequential or incidental damages.

LIMITATION OF WARRANTIES

No warranties, express or implied, are made in connection with the sale of parts or trade accessories nor as to any engine not manufactured by Multiquip. Such warranties made in connection with the sale of new, complete units are made exclusively by a statement of warranty packaged with such units, and Multiquip neither assumes nor authorizes any person to assume for it any other obligation or liability whatever in connection with the sale of its products. Apart from such written statement of warranty, there are no warranties, express, implied or statutory, which extend beyond the description of the products on the face hereof.

[illegible]

OPERATION AND PARTS MANUAL

HERE'S HOW TO GET HELP

PLEASE HAVE THE MODEL AND SERIAL
NUMBER *ON-HAND* WHEN CALLING

UNITED STATES

Multiquip Corporate Office

18910 Wilmington Ave. Tel: (800) 421-1244
Carson, CA 90746 Fax (800) 537-3927
Contact: mq@multiquip.com

Mayco Parts

800-306-2926 Fax: 800-672-7877
310-537-3700 Fax: 310-637-3284

Service Department

800-421-1244 Fax: 310-537-4259
310-537-3700

MQ Parts Department

800-427-1244 Fax: 800-672-7877
310-537-3700 Fax: 310-637-3284

Warranty Department

800-421-1244, Ext. 279 Fax: 310-537-1173
310-537-3700, Ext. 279

Technical Assistance

800-478-1244 Fax: 310-631-5032

MEXICO

MQ Cipsa

Carr. Fed. Mexico-Puebla KM 126.5 Tel: (52) 222-225-9900
Momoxpan, Cholula, Puebla 72760 Mexico Fax: (52) 222-285-0420
Contact: pmastretta@cipsa.com.mx

CANADA

Multiquip

4110 Industriel Boul. Tel: (450) 625-2244
Laval, Quebec, Canada H7L 6V3 Fax: (450) 625-8664
Contact: jmartin@multiquip.com

UNITED KINGDOM

Multiquip (UK) Limited Head Office

Hanover Mill, Fitzroy Street, Tel: 0161 339 2223
Ashton-under-Lyne, Fax: 0161 339 3226
Lancashire OL7 0TL
Contact: sales@multiquip.co.uk

BRAZIL

Multiquip

Av. Evandro Lins e Silva, 840 - grupo 505 Tel: 011-55-21-3433-9055
Barra de Tijuca - Rio de Janeiro Fax: 011-55-21-3433-9055
Contact: cnavarro@multiquip.com.br, srentes@multiquip.com.br

© COPYRIGHT 2007, MULTIQUIP INC.

Multiquip Inc, the MQ logo and the Mikasa logo are registered trademarks of Multiquip Inc. and may not be used, reproduced, or altered without written permission. All other trademarks are the property of their respective owners and used with permission.

This manual **MUST** accompany the equipment at all times. This manual is considered a permanent part of the equipment and should remain with the unit if resold.

The information and specifications included in this publication were in effect at the time of approval for printing. Illustrations are based on the *MQ Mikasa MT-75H Tamping Rammer*. Illustrations, descriptions, references and technical data contained in this manual are for guidance only and may not be considered as binding. Multiquip Inc. reserves the right to discontinue or change specifications, design or the information published in this publication at any time without notice and without incurring any obligations.

Your Local Dealer is:

