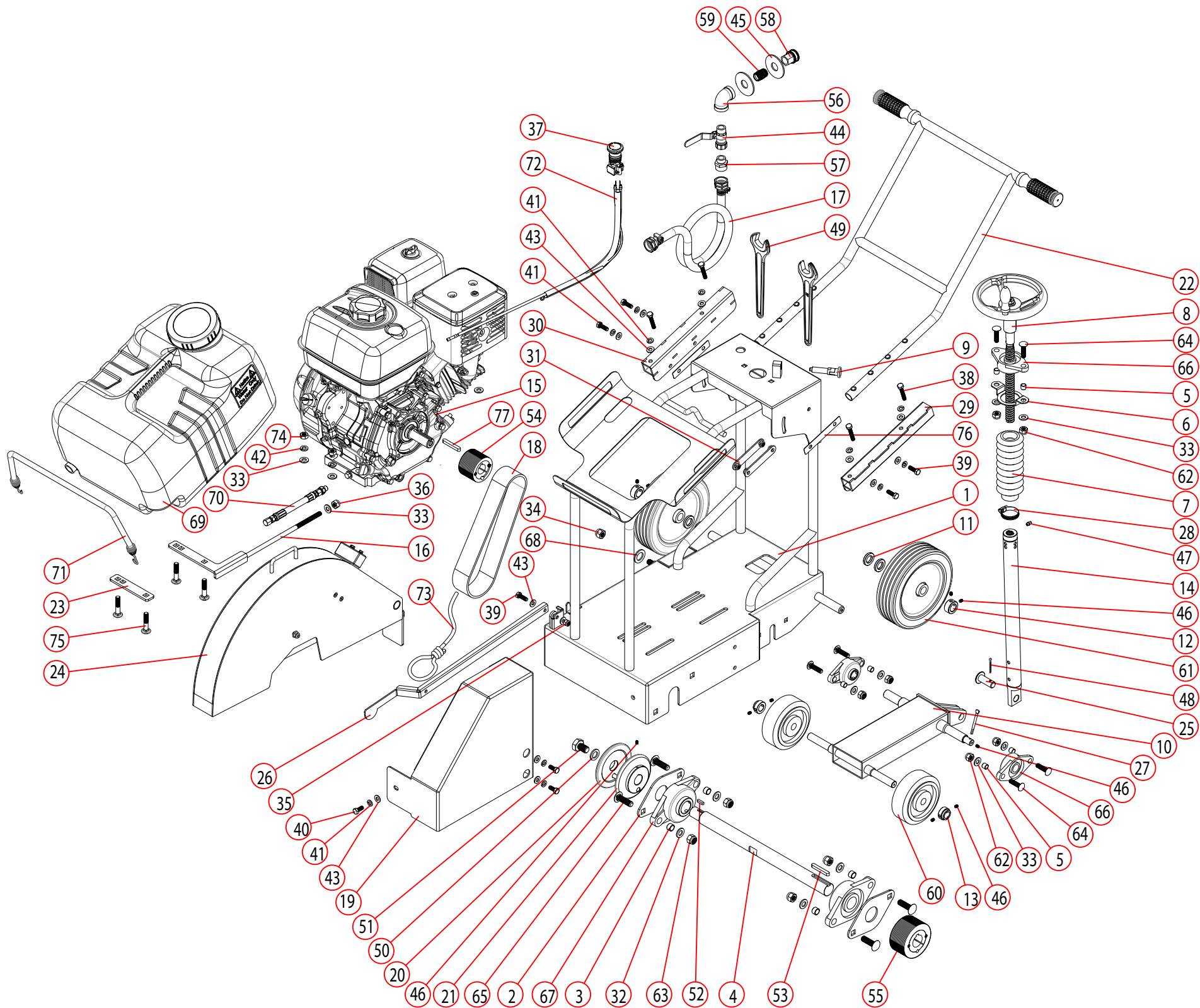


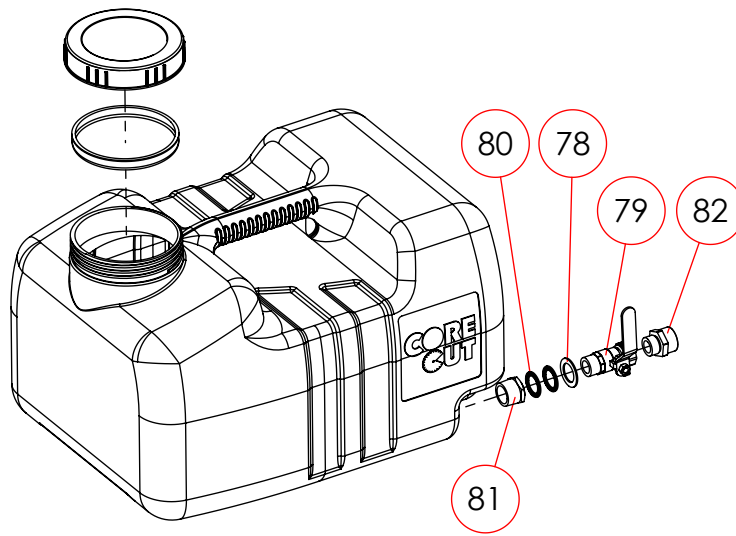


**CORE CUT  
CONCRETE SAW  
PARTS LIST**

**MODEL  
CCE0900**

APRIL 2020





	DP #	
78	6044353	Washer D32 x d21.3 x ID 1.5T
79	6044354	Female 1/2" PT X male 1/2" PT straight ball valve fitting
80	6044355	PVC Spacer ID20mm x OD28mm
81	6044356	Bushing 3/4 x 1/2
82	3200155	Fitting, 1/2"Male Pipe to 3/4"Male Garden Hose

	DP #	DESCRIPTION
1	6044318	Main frame weldment
2	6043454	Bearing spacer
3	6043453	D16 d12.7 X 10L Bushing
4	6044319	Blade shaft
5	6043478	D12 d9.5 X 10L Bushing
6	6044329	Bellow mount washer
7	6043481	Bellow, 25P;Ø40*Ø64*450L(MAX)
8	6043476	Depth control crank
9	6043422	Quick release lock pin
10	6044320	Axle Weldment
11	6043468	D32 d19 X 5L Spacer
12	6043467	d19.05 Set collar
13	6043444	d17 Set collar
14	6043484	Adjustment shaft
15	2600116	Engine
16	6044321	Motor Tension Plate
17	6044324	Garden Hose Assembly
18	2502000	Micro-V belt, 280PJ 20 rib
19	6044331	Belt Guard Weldment
20	6043458	Outer flange w/pin assembly
21	6043457	Inner flange
22	6044332	Push Handle
23	6043435	Belt adjustment bracket
24	6044323	Blade Guard
25	6043439	M16 X 39L - 30 Clevis type pin
26	6044325	Pointer
27	6044326	Depth indicator
28	6044333	1-3/4" - 13/16" Hose clamp
29	6044327	Push Handle Mounting Bracket A
30	6044341	Push Handle Mounting Bracket B
31	6044330	Handle Nut Weldment
32	2901357	M12 Regular Washer
33	2901356	M10 Regular Washer
34	6044342	M12 x 1.75 Nylon Nut
35	6044335	M8 x 1.25 Nylon Nut
36	6044336	M10 x 1.5 Nylon Nut
37	6044343	Emergency Stop Switch
38	2900336	M8 x 1.25 x45L x22 Cap hex bolts
39	6044337	M8 x 1.25 x 25L Hex bolt

	DP #	DESCRIPTION
41	2900763	M8 Spring Lock Washer
42	2900321	M10 Spring Lock Washer
43	6044334	M8 Wide Washer
44	6044344	Female 1/2" PT X male 1/2" PT straight ball valve
45	6043433	M20 Washer
46	2900576	M6 x 1.0 x 8L Flat point set screw
47	4600263	(1/4-28 UNF) Grease fitting
48	2900004	Cotter pin
49	2500256	Size 27 open-end wrench
50	6044340	5/8 Narrow washer inch
51	2903210	5/8 - 11 x 1 UNC Hex bolt - Left
52	6043448	5 x 5 x 20L Square key
53	6043447	8 x 7 x 56L Square key
54	6043417	1" (25.4mm) Bore micro-V pulley (D65mm)
55	6043456	1-1/4" (31.75mm) Bore micro-V pulley (D90mm)
56	6044317	Female 1/2" PT X female 1/2" PT elbow fitting
57	3200155	Fitting, 1/2"Male Pipe to 3/4"Male Garden Hose
58	3200022	Female 3/4" Garden swivel X female 1/2 PT straight fitting
59	6044359	Male 1/2" PT X male 1/2" PT straight thread
60	6043443	4" (D125) d17 X 55W Wheel
61	6043466	8" (D203.2) d19.05 X 53W Wheel
62	2900018	3/8 - 16 UNC Nylon Nut
63	6044360	1/2 - 13 UNC Nylon Nut
64	6044361	3/8 - 16 UNC x 1-1/2L Square neck bolt
65	6044362	1/2 - 13 UNC x 1-3/4L Square neck bolt
66	6043479	UCFL204-12 3/4" Flange caster bearing
67	2504038	UC207-20 Flange caster bearing
68	6044345	M20 Nylon washer
69	6044346	CCE0911 Water Tank
70	6044347	GX390 Oil hose assembly
71	6044348	20" Hooked bungee cord
72	6044349	CCE0911H-20 Emergency stop wire bundle
73	6044350	point rope
74	2900304	M10 x 1.5 Nut
75	6044351	M10 x 1.5 x 50L - 26shx Square neck bolt
76	6044352	Rectangular washer
77	6044358	6 X 6 X 58L Square key

## NOTES & RECORDS

[illegible]

Proposition 65  
State of California

Warning !

Engine exhaust and some its constituents are known to the State of California to cause cancer, birth defects, and/or other reproductive harm.

Notification of Spark Arrester Requirement for  
State of California

It is a violation of Section 4442 or 4443 to use or operate the engine on any forest-covered, brush-covered, or grass-covered land unless the engine is equipped with a spark arrester, as defined in Section 4442, maintained in effective working order or the engine is constructed, equipped, and maintained for the prevention of fire pursuant to Section 4443.

## **EQUIPMENT AND PARTS WARRANTY**

Diamond Products warrants all equipment manufactured by it against defects in workmanship or materials for a period of 1 year from the date of shipment to Customer. The responsibility of Diamond Products under this Warranty is limited to replacement or repair of defective parts at Diamond Products' Elyria, Ohio factory, or at a point designated by it, of such parts as shall appear to us upon inspection at such parts, to have been defective in material or workmanship, with expense for transportation and labor borne by Customer. In no event shall Diamond Products be liable for consequential or incidental damages arising out of the failure of any Product to operate properly.

THIS WARRANTY IS IN LIEU OF ALL OTHER WARRANTIES, EXPRESSED OR IMPLIED, AND ALL SUCH OTHER WARRANTIES ARE HEREBY DISCLAIMED.



333 Prospect Street, Elyria, Ohio 44035  
(440) 323-4616 • (800) 321-5336 • Fax (800) 634-4035  
[www.diamondproducts.com](http://www.diamondproducts.com)