

DIAMOND PRODUCTS

SPECIALTY EQUIPMENT MANUFACTURING DIVISION

CURB SAW

Parts List



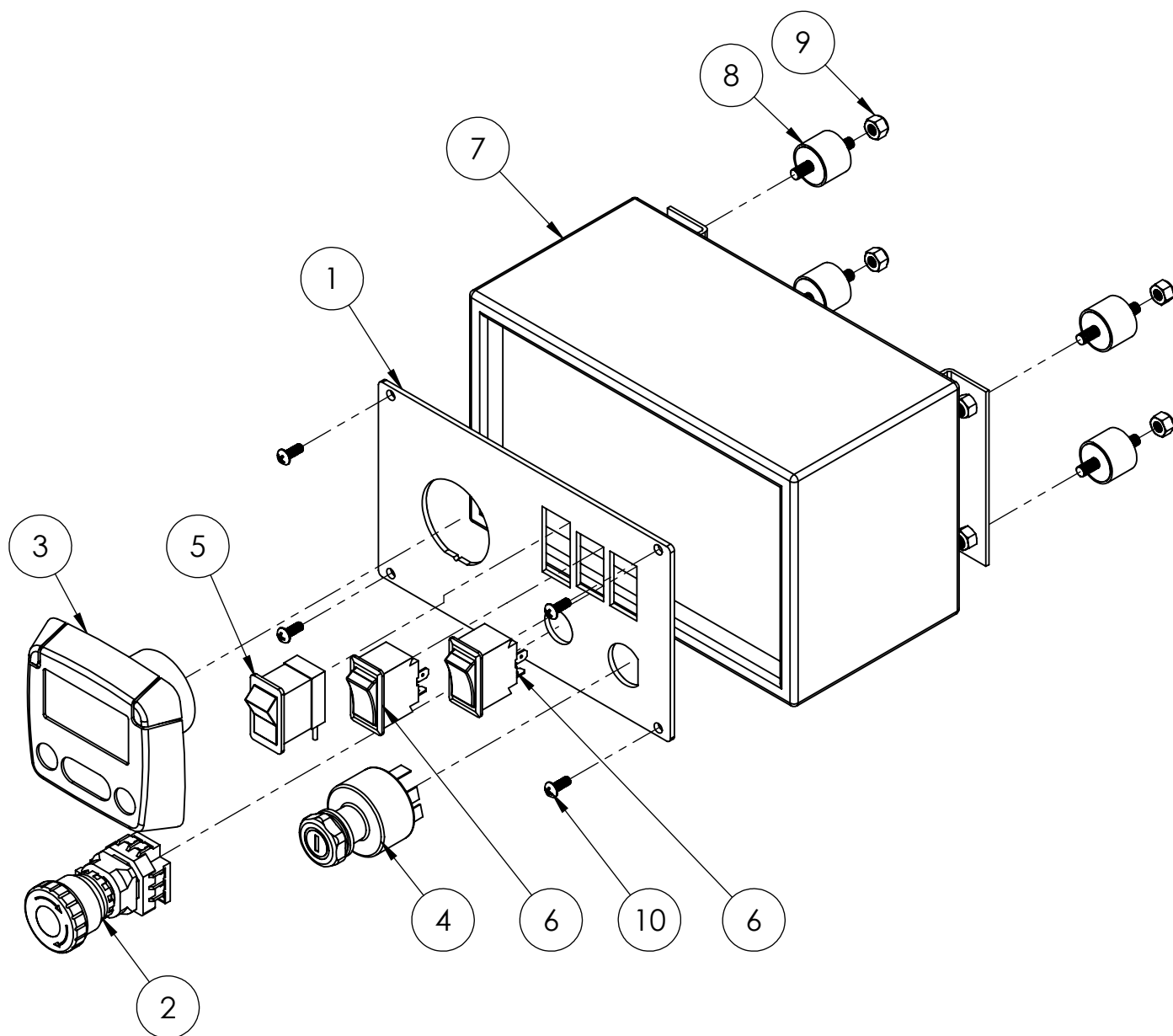
Models:
CS-2000-80
CS-2000-100

March 2017

Part #1801033

Dash Panel Assembly

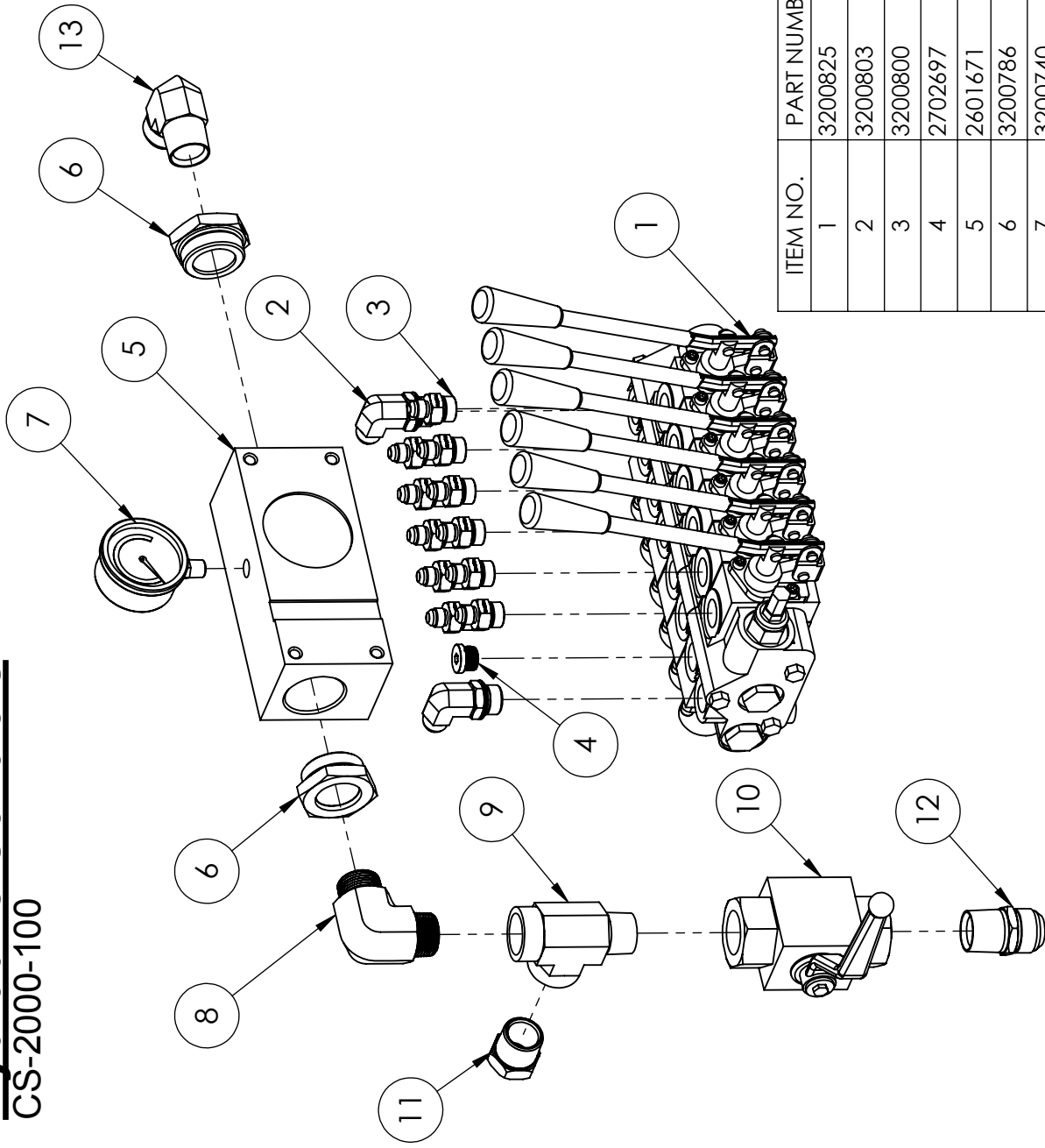
CS-2000-100



ITEM NO.	PART NUMBER	DESCRIPTION	QTY.
1	6070804A	Dash Panel, CS-2000	1
2	2801367	E-Stop Switch	1
3	2802961	Powerview Electronic Display	1
4	2703138	IGNITION SWITCH	1
5	2804514	Switch,	1
6	2802058	Rocker Switch (Pump)	2
7	2704857	Power View Dash Panel (John Deere)	1
8	2902020	1/4-20 x .750" Rubber Isolator	4
9	2900010	1/4-20 Nylon-Insert Hex Locknut	8
10	2900708	10-32 x 1/2 RHS	4

Hydraulic Controls

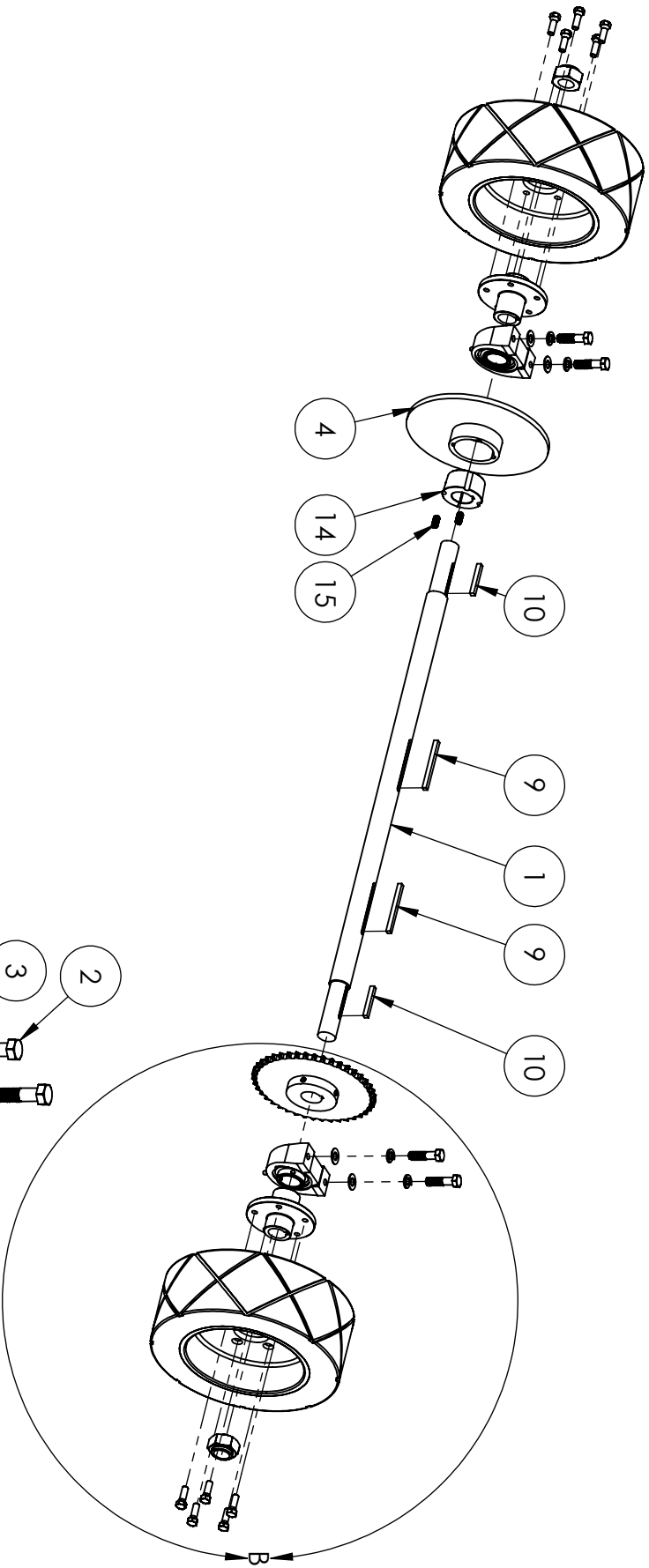
CS-2000-100



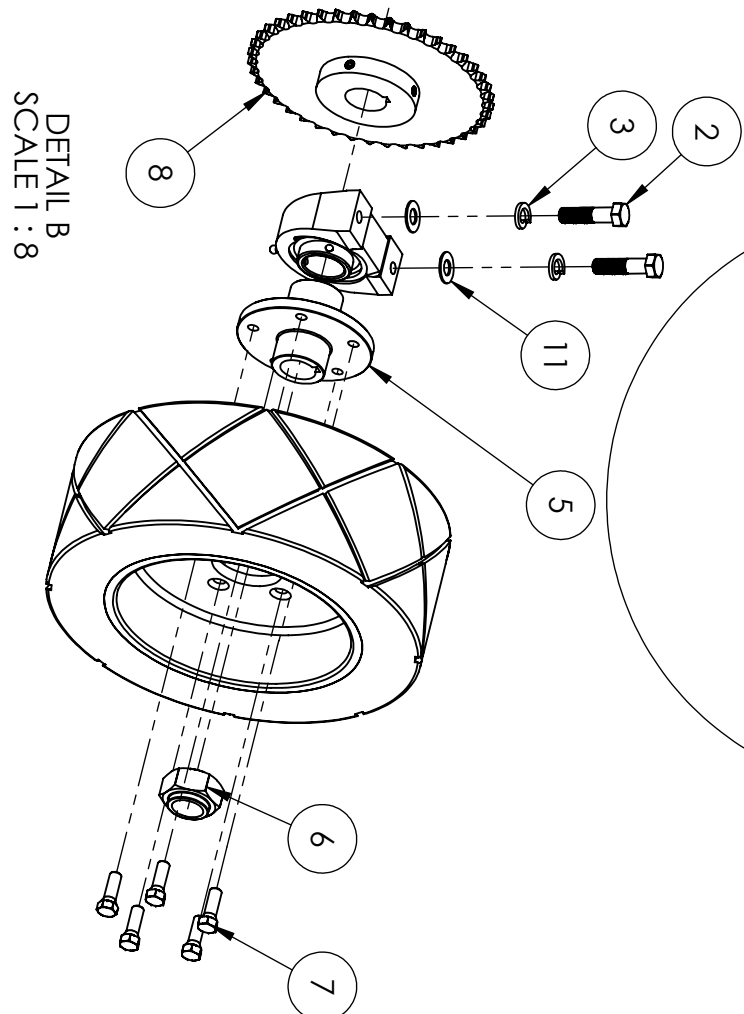
ITEM NO.	PART NUMBER	DESCRIPTION	QTY.
1	3200825	6 Bank Hydraulic Control Valve	1
2	3200803	Elbow Fitting, 1/2" MJIC x 5/8" MORB	2
3	3200800	.500" M O-RING x .375" MJIC Fitting	11
4	2702697	8 SAE O-Ring Plug, Hex	1
5	2601671	CS2000 Flow Meter	1
6	3200786	1.50" x 1.00" M O-RING Reduction Bushing	2
7	3200740	Pressure Gauge, 0-10000psi	1
8	3200787	1.00" MPT 90° Elbow	1
9	3200738	1" Run Tee	1
10	3200831	1.00" High Pressure Valve	1
11	3205809	1.00 MPT x .375 MJIC Straight Fitting	1
12	3200663	Fitting, 1" NPT x 1" MJIC	1
13	3200289	Elbow, 16MJIC x 16MPT x 90 Deg	1

Drive Axle Assembly

CS-2000-100

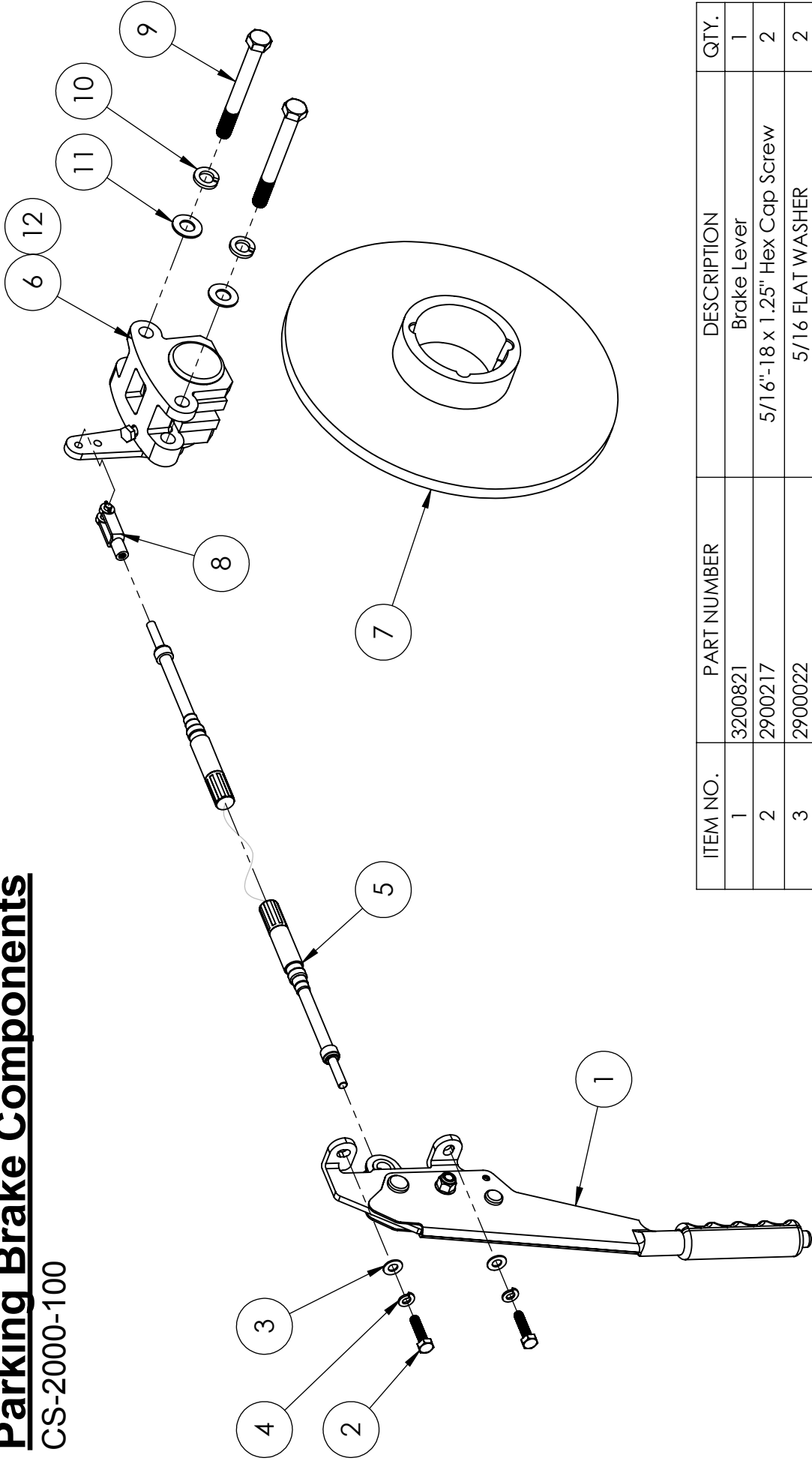


ITEM NO.	PART NUMBER	DESCRIPTION	QTY.
1	2502858	Rear Axle Shaft	1
2	2903126	5/8-18 x 2.50" HHCS	4
3	2900113	5/8 SPLIT LOCK WASHER	4
4	6079325	CC2000 Brake Rotor	1
5	2502862	Rear Wheel Hub	2
6	2901014	1-1/2-12 Stover Nut	2
7	2903183	Wheel Bolt 1802Z	10
8	2502711	SPROCKET 1-3/4" BORE 42 TOOTH #60 CHAIN	1
9	2505901	3/8 x 4.625" Key	2
10	2505900	3/8 x 2.875" Key	2
11	2900202	5/8 SAE FLAT WASHER	4
12	2502890	CS 1-3/4" PB Bearing	2
13	2503325	6" Wheel	2
14	2517 1 3/4	Taper Bushing (TB) 2517	1
15	2900489	1/2-13 x 1.00" Cup Point Set Screw	2



Parking Brake Components

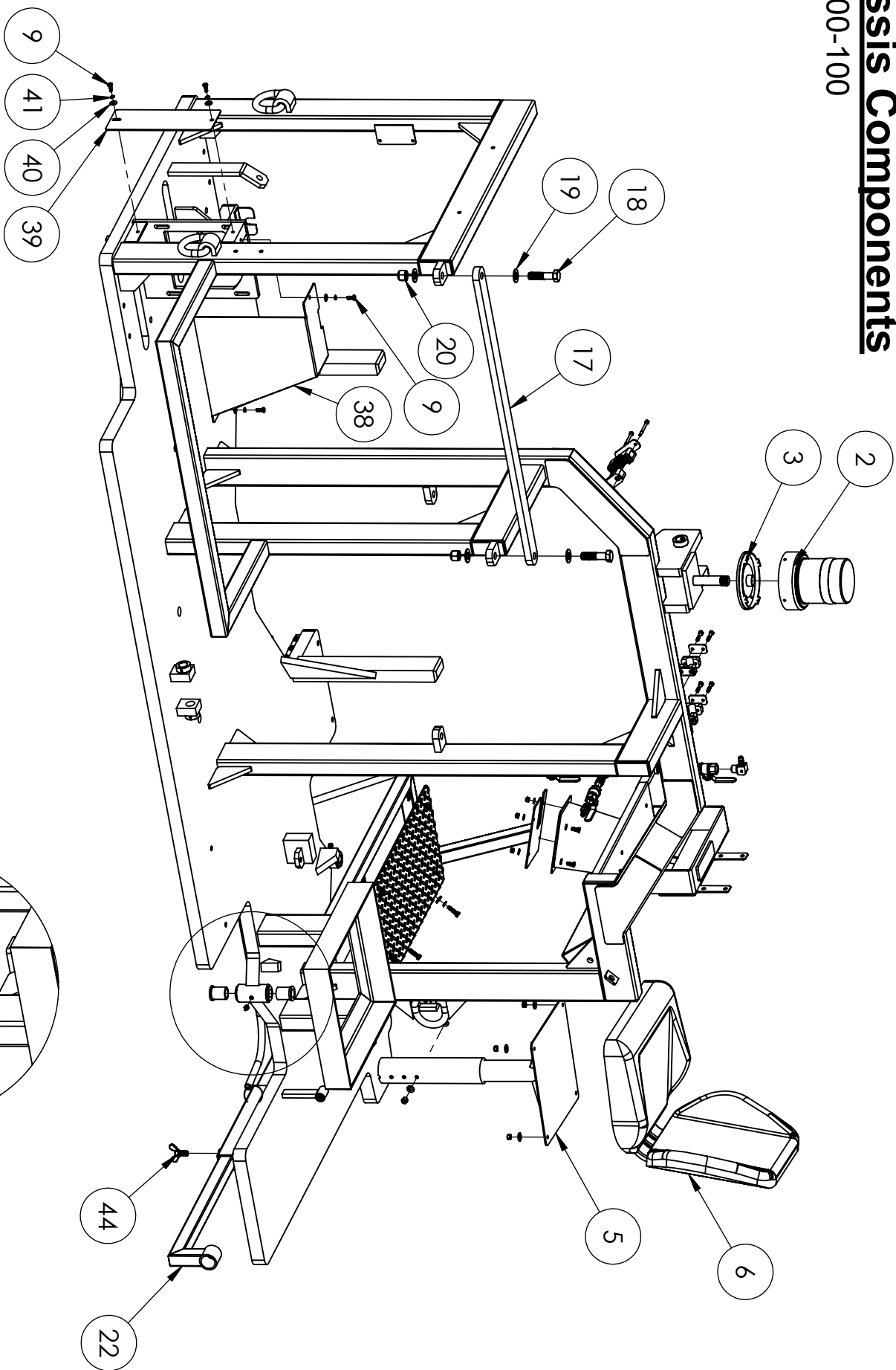
CS-2000-100



ITEM NO.	PART NUMBER	DESCRIPTION	QTY.
1	3200821	Brake Lever	1
2	2900217	5/16"-18 x 1.25" Hex Cap Screw	2
3	2900022	5/16 FLAT WASHER	2
4	2900031	5/16 SPLIT LOCK WASHER	2
5	2502765	Cable - 150"	1
6	3200820	Mechanical Brake Caliper	1
7	6079325	CC2000 Brake Rotor	1
8	2502769	Clevis, 1/4-28 x 1/4	1
9	2903094	1/5-13 x 4.50" HEX Cap Screw	2
10	2900084	1/2 SPLIT LOCK WASHER	2
11	2900058	1/2 SAE Flat Washer	2
12	2702781	Brake Pads	1

Chassis Components

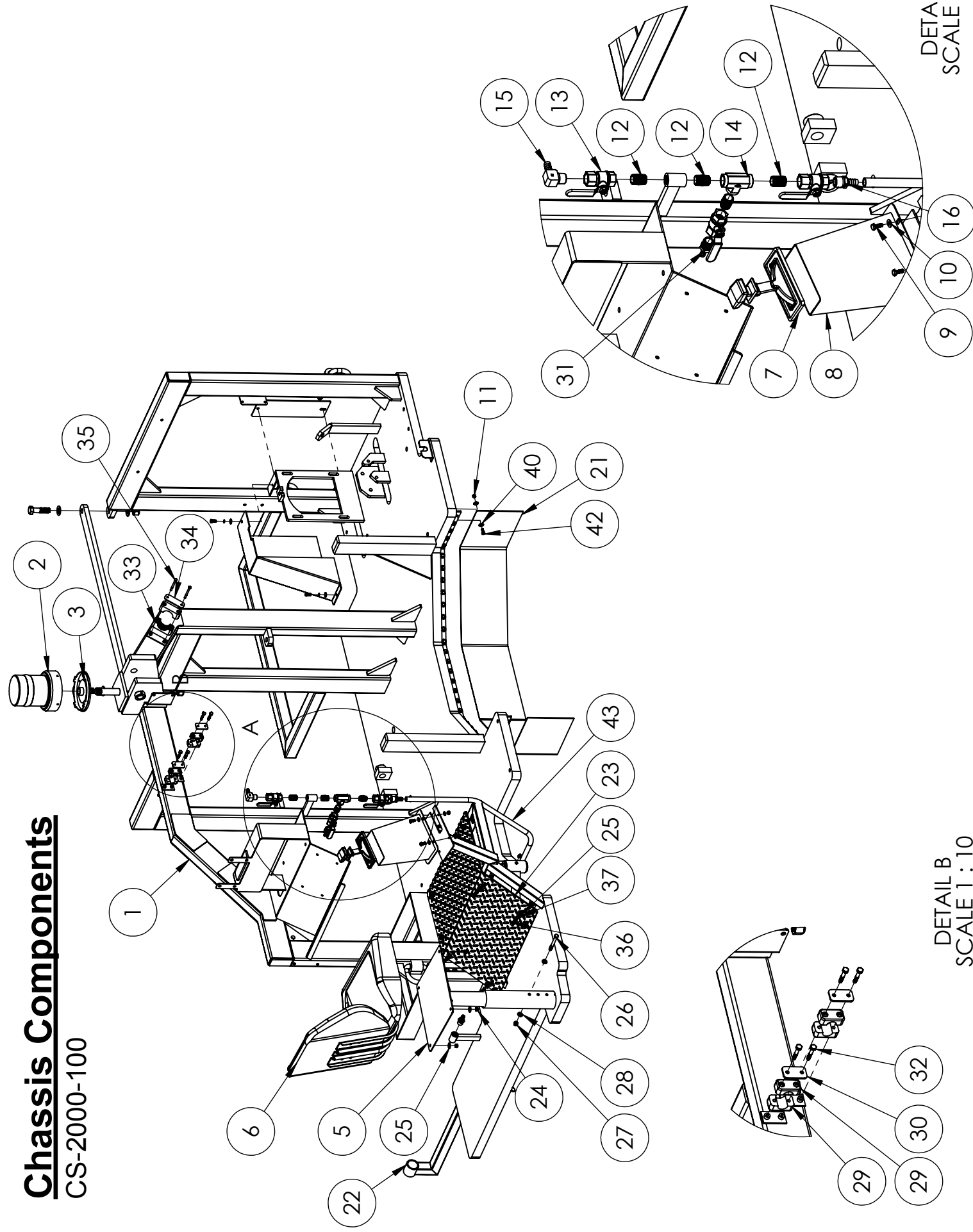
CS-2000-100



DETAIL C
SCALE 1 : 10

Chassis Components

CS-2000-100



DETAIL A
SCALE 1:10

DETAIL B
SCALE 1:10

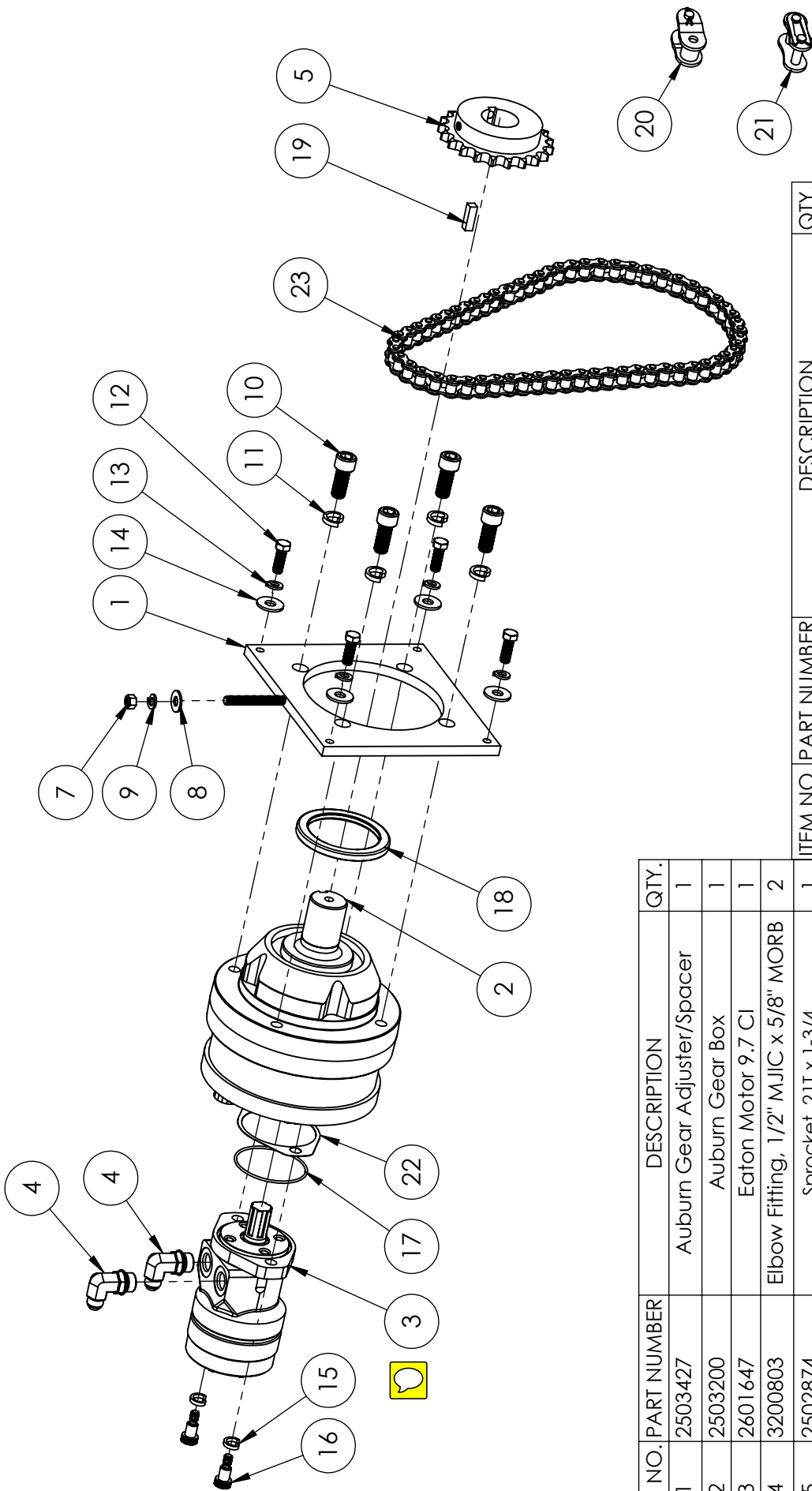
Chassis Components

CS-2000-100

ITEM NO.	PART NUMBER	DESCRIPTION	QTY.
1	6040403	CC2000 Frame Weldment	1
2	2802597	Safety Light Top	1
3	2802596	Safety Light Base	1
5	6040416	Seat Mount	1
6	2502775	Seat	1
7	2502764	Locking Shift Lever	1
8	2502763	9.00" Shifter Tower	1
9	2900114	1/4-20x.750 HEX CAP SCREW	8
10	2900009	1/4 SAE Flat Washer	8
11	2900010	1/4-20 Nylon-Insert Hex Locknut	37
12	3200598	Close Nipple, 1/2" NPT, Brass	4
13	3200027	Water Valve	3
14	3201352	Pipe Tee, 08FP-08FP-08FP	1
15	3201330	1/2 MPT x 1/2 90 Deg. Hose Barb, Brass	1
16	3201349	1/2 Hose Barb to 1/2 MPT Brass	2
17	6079319	Engine Bay Support	1
18	2903140	3/4-10x3.00" Hex Cap Screw	2
19	2900003	3/4" SAE Flat Washer	4
20	2900467	3/4-10 Nylon-Insert Hex Locknut	2
21	2501875	Vinyl Strip, 8.00" (Sold Per Inch)	1
22	6040417	Water Bar, CS-2000	1
23	6070708	Foot Plate	1
24	2900039	5/16"-18 Nylock Hex Nut	4
25	2900567	5/16" Flat Washer	11
26	2903028	3/8-16 x 3.50" HHCS	1
27	2900018	3/8-16 Nylon Lock Nut	1
28	2900014	3/8" SAE Flat Washer	2
29	3205898	1/2" Pipe Clamp	4
30	3200839	Cover Plate	2
31	3201861	1/2 MPT x 3/8 Hose Barb	1
32	3200837	COVER BOLT/ASDP3	4
33	3200835	Clamp Half, 2.00"	2
34	3200840	Cover Plate, Size 6	1
35	3200838	Bolt, ASDP6	2
36	2900217	5/16"-18 x 1.25" Hex Cap Screw	7
37	2900031	5/16 SPLIT LOCK WASHER	7
38	6040407	Chain Guard	1
39	6070793	Chain Shield	1
40	2900126	1/4" USS Flat Washer	70
41	2900024	1/4" Split Lock Washer	4
42	2900008	1/4-20 x .750" Hex Head Cap Screw	33
43	3201312	1/2" I.D. Water Hose (SOLD PER FOOT)	1
44	2900430	1/2-13 Wing Bolt	1
45	2900062	Grease Fitting, 1/8" NPT	2
54	2502122	Flange Bushing, 1-3/8 O.D x 1.00 ID x 1-3/4	4

Ground Drive Assembly

CS-2000-100

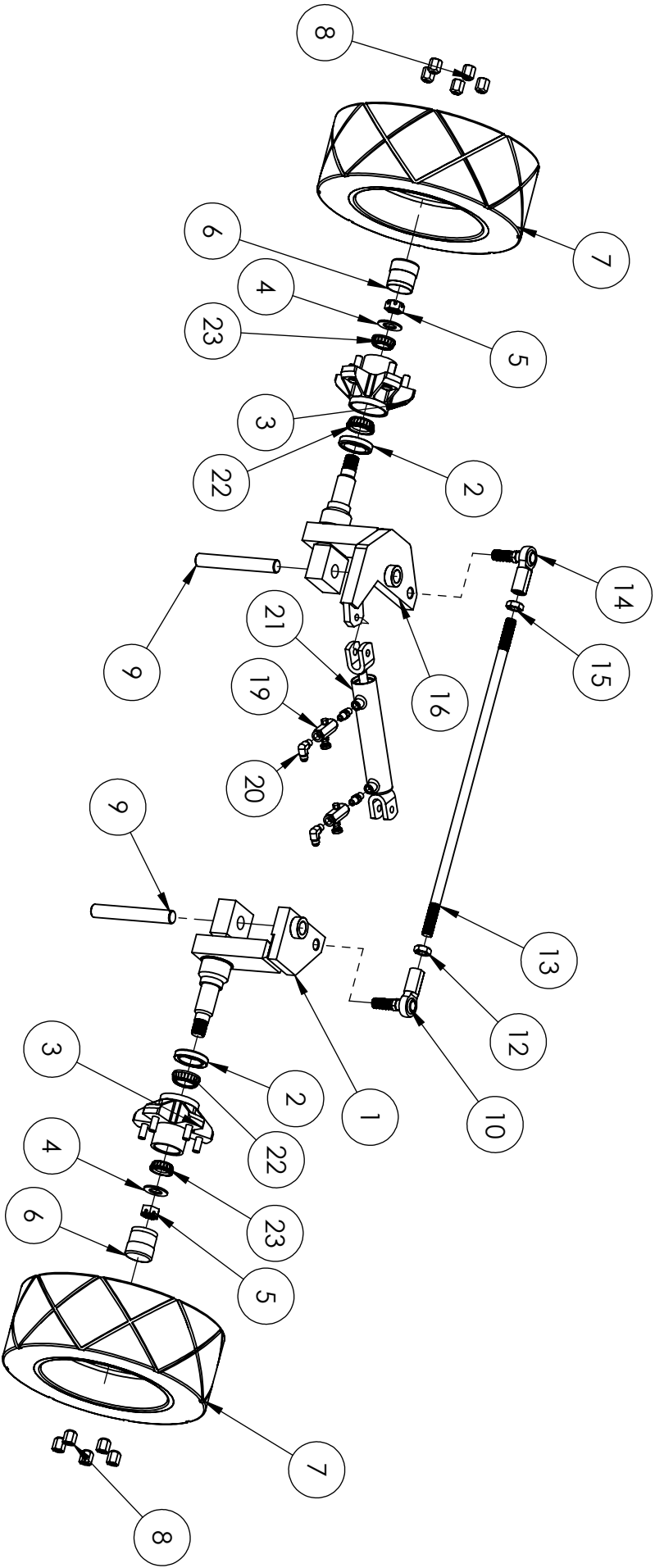


ITEM NO.	PART NUMBER	DESCRIPTION	QTY.
1	2503427	Auburn Gear Adjuster/Spacer	1
2	2503200	Auburn Gear Box	1
3	2601647	Eaton Motor 9.7 CI	1
4	3200803	Elbow Fitting, 1/2" MJIC x 5/8" MORB	2
5	2502874	Sprocket, 21T x 1-3/4	1
6	2506313	#60 Chain, 63 Pitch	1
7	2900148	3/8-24 Steel Hex Nut	1
8	2903018	USS 3/8" Flat Washer	1
9	2900006	3/8 SPLIT LOCK WASHER	1
10	2903131	5/8-11 x 1-1/2 SHCS	4
11	2903129	5/8 High Collar Lock Washer	4
12	2900957	7/16-14 x 1.25 HHCS	4
13	2900238	7/16 SPLIT LOCK WASHER	4
14	2903055	7/16 USS Standard Washer	4

ITEM NO.	PART NUMBER	DESCRIPTION	QTY.
15	2903100	1/2 Machine Screw Split Lock Washer	2
16	2902085	1/2 x 5/8 Shoulder Bolt	2
17	2400628	O-Ring, -152 Buna-N	1
18	3203017	Oil Seal	1
19	2505902	Key, 3/8 x 1.25"	1
20	2501948	#60 Chain, Master Link	1
21	2506314	#60 Chain, Offset Link	1
22	3200816	Gasket, SAE A Pad	1
23	2506313	#60 Chain, 63 Pitch	1

CS-2000-100

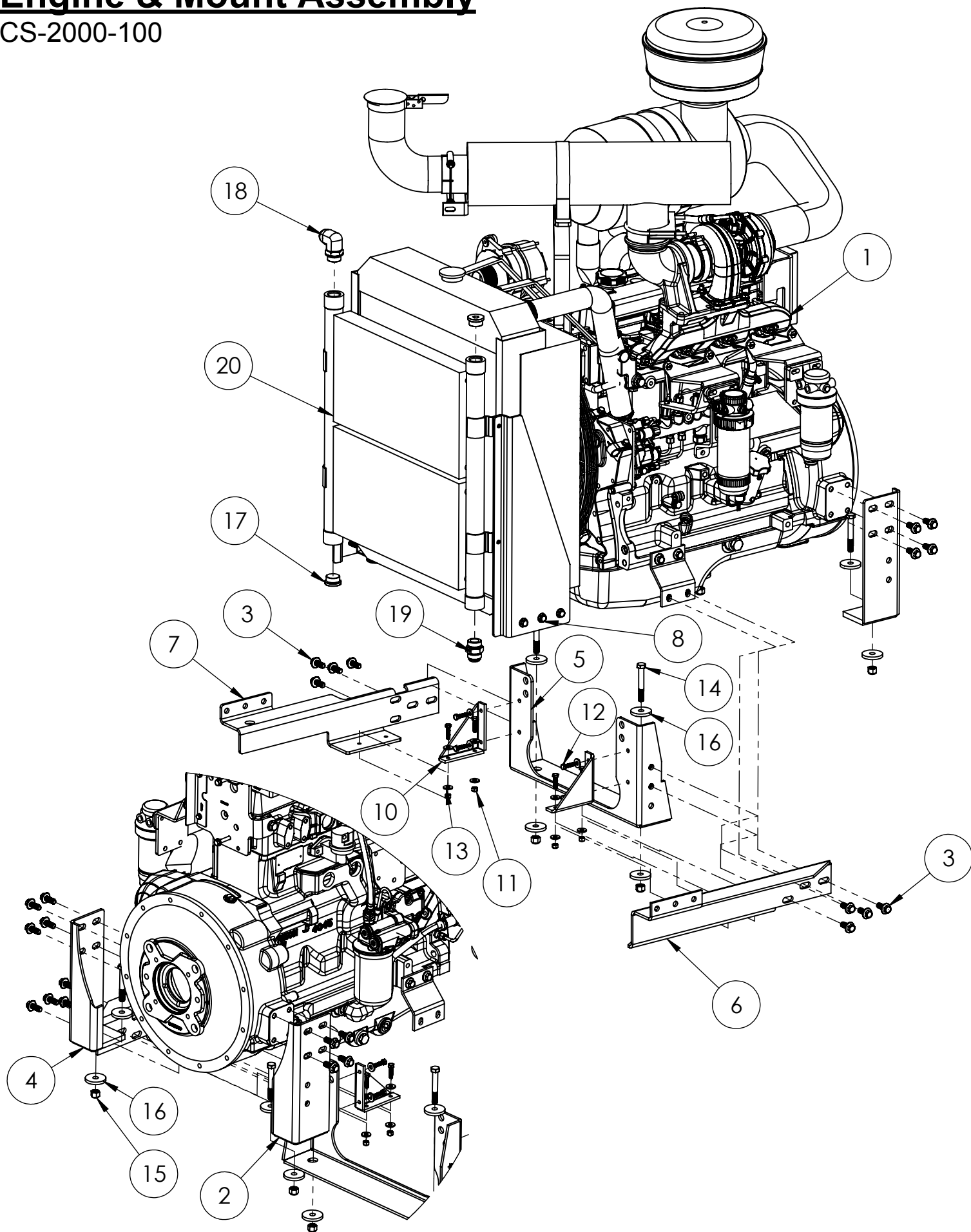
Steering Assembly



ITEM NO.	PART NUMBER	DESCRIPTION	QTY.	ITEM NO.	PART NUMBER	DESCRIPTION	QTY.
1	6040401	CC2000 Right Steering Spindle Weldment	1	13	2503461	CC2000 Steering Tie Rod	1
2	3201344	Seal, Double Lip	2	14	2502773	RH Ball Joint Linkage	1
3	2503499	CC2000 Studded Wheel Hub	2	15	2903145	3/4-16 Jam Nut LH	1
4	2502934	Spindle Washer 1"	2	16	6040402	CC2000 Left Steering Spindle Weldment	1
5	2903196	Spindle Nut 1"	2	17	3200822	1-1/2 x 6 Double Actuator Cylinder	1
6	2503501	Bearing Buddy	2	18	3200791	5404-04-04	2
7	2503325	6" Wheel	2	19	3200811	.250" Floe Control Valve	2
8	2903195	1/2-20 Lug/Cone Nut	10	20	3200796	.375" MJIC x .250" MPT 90° Fitting	2
9	2503558	King Pin	2	21	3200873	Hydraulic Cylinder, Double 1-1/2 x 6.00	1
10	2502772	LH Ball Joint Linkage	1	22	2503497	Bearing, 1-3/8 (L68149)	2
11	2900042	3/4 SPLIT LOCK WASHER	2	23	2503496	Bearing, 1-1/16 (L44649)	2
12	2903144	3/4-16 Jam Nut RH	3				

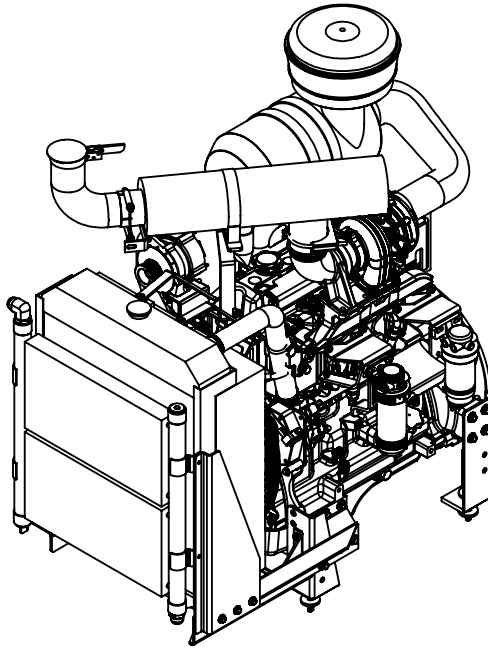
Engine & Mount Assembly

CS-2000-100



Engine & Mount Assembly

CS-2000-100

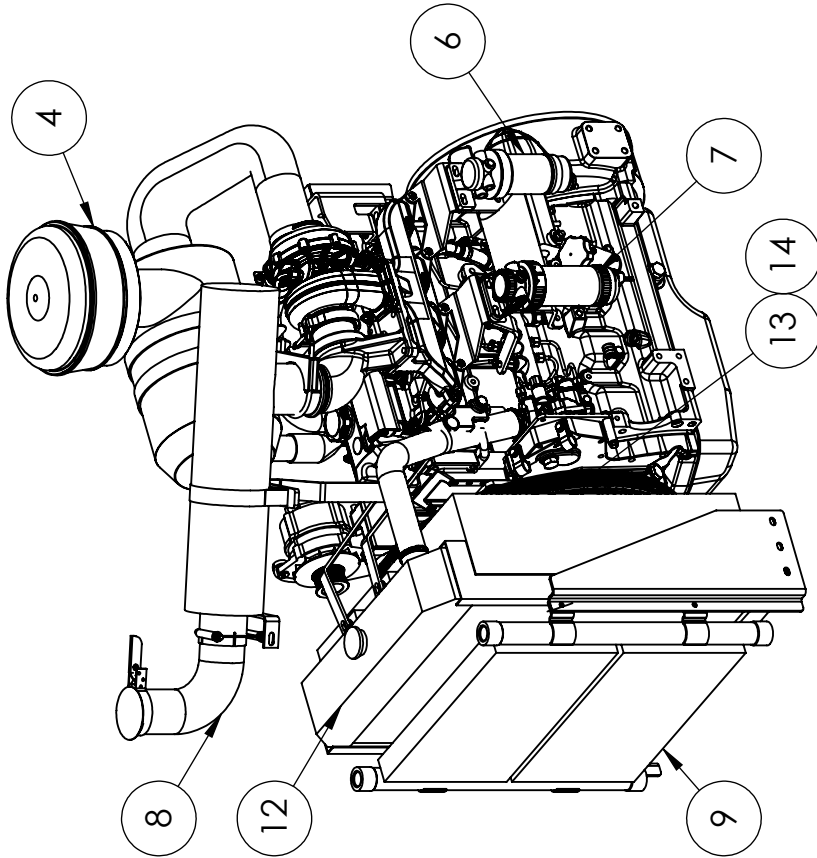
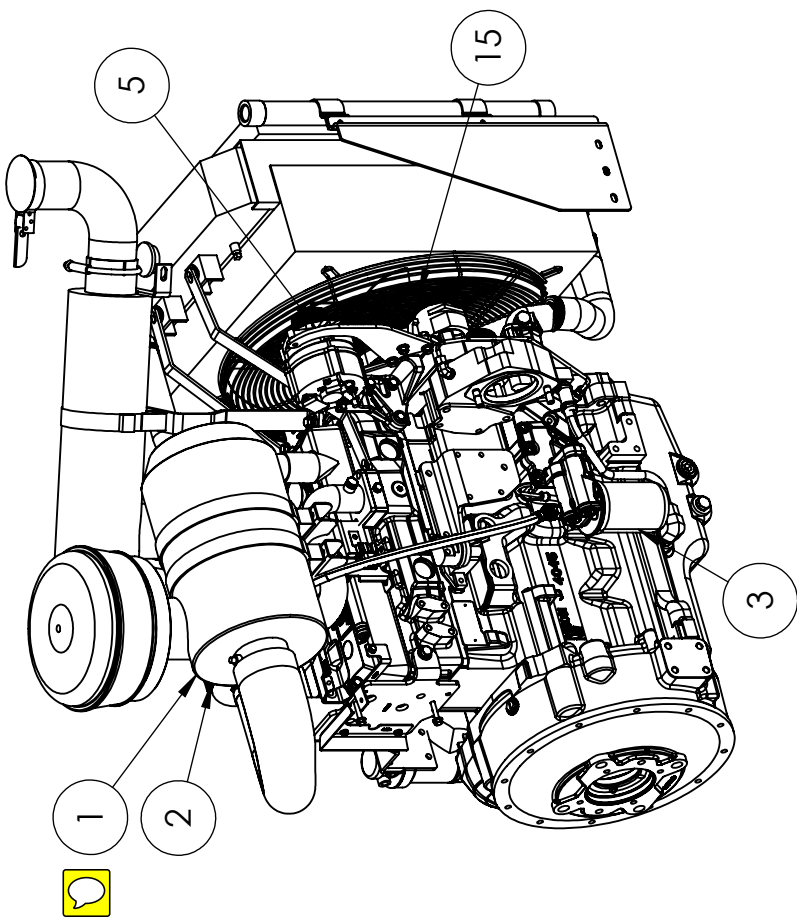


ITEM NO.	PART NUMBER	DESCRIPTION	QTY.
1	2708110	Engine, Diesel, John Deere 4045TF285	1
2	6079341	CC2000 RR Engine Mount	1
3	2907099	M12-1.75x30 FHCS	20
4	6079340	CC2000 LR Engine Mount	1
5	6079336	CC2000 Center Engine Mount	1
6	6079338	CC2000 LF Cooler Support	1
7	6079337	CC2000 RF Cooler Support	1
8	2907100	M10-1.25 x 30mm FHCS	6
9	3400055	M12-1.75 Flange Head Hex Nut	6
10	6079339	CC2000 Cooler Gusset	2
11	2900039	5/16"-18 Nylock Hex Nut	8
12	2900217	5/16"-18 x 1.25" Hex Cap Screw	8
13	2900567	5/16" Flat Washer	16
14	2903092	1/2-13 x 3.50" HHCS	4
15	2900026	1/2-13 Nylon-Insert Hex Locknut	4
16	2902339	Flat Washer, .531 x 2.00 x .250	8
17	3200717	-16 O-Ring Plug, Hex	2
18	3205509	16 MJIC x 16 M O-Ring 90°	1
19	3200715	16 MJIC X 16 MORB STRAIGHT	1
20	2704852	Hydraulic Oil Cooler	1

Engine Maintenance Components

CS-2000-100

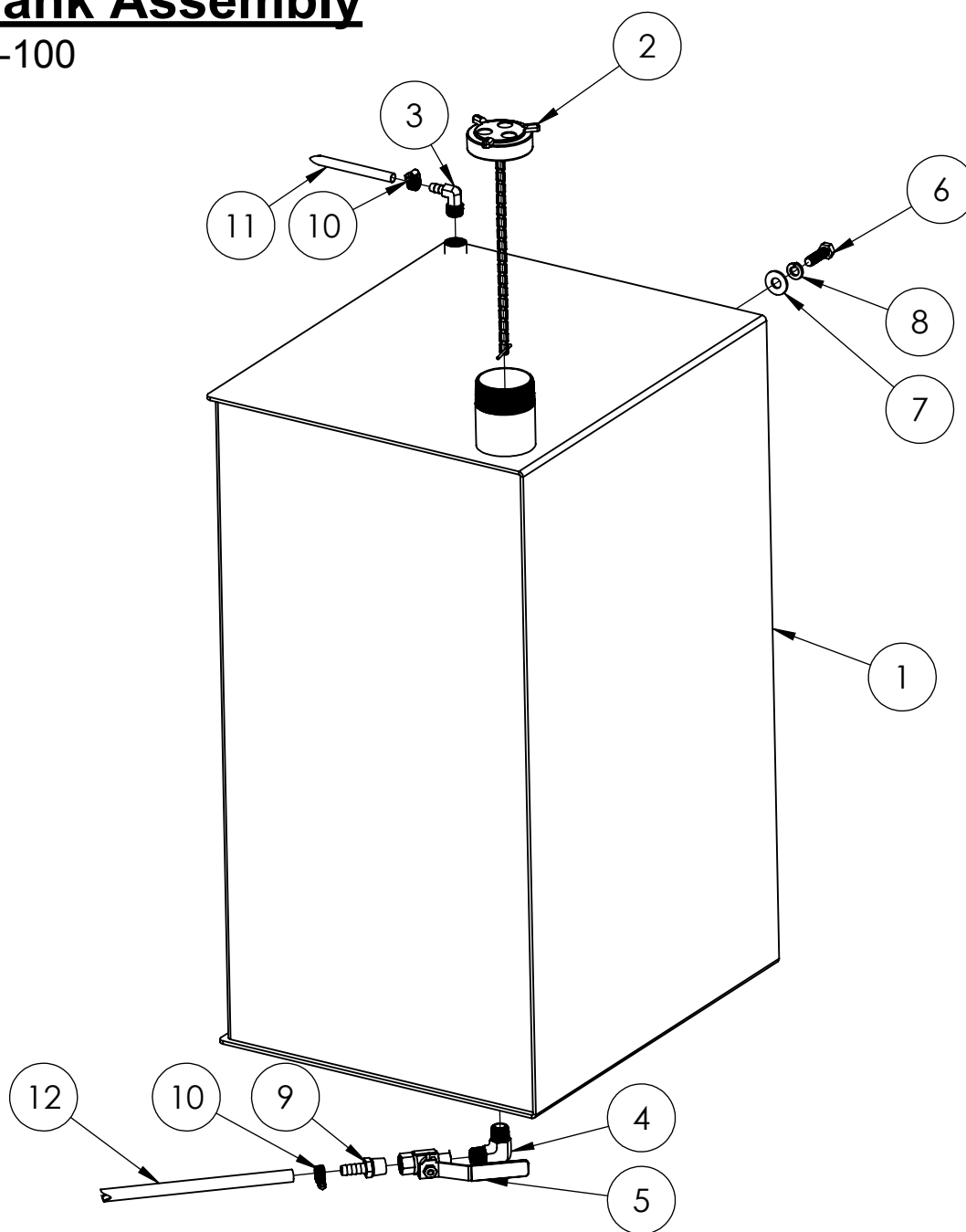
ITEM NO.	PART NUMBER	DESCRIPTION	MANUFACTURER NO.
1	2707372	Air Filter, Outer	CH09-16729
2	2707373	Air Filter, Inner	ST09-16731
3	2703158	Oil Filter	RE504836
4	2708100	Pre Cleaner, Full View	N/A
5	2707371	V-Belt	R529379
6	2707344	Fuel Filter	RE522878
7	2506793	Fuel / Water Separator	RE541922
8	2505932	Muffler, Horizontal	N/A
9	2704852	Hydraulic Oil Cooler	N/A
10	2707137	Starter Motor	N/A
11	2506789	Alternator	N/A
12	2506788	Radiator	N/A
13	2506790	Water Pump	N/A
14	2506791	Water Pump Gasket	N/A
15	2506792	Cooling Fan	N/A



FLUID	TYPE	INTERVAL	QTY.
Engine Oil	John Deere Plus-50 II, 15W-40	500 Hours	13.7 qt.
Coolant	John Deere Cool-Guard II	6000 Hours	Fill Radiator Full

Fuel Tank Assembly

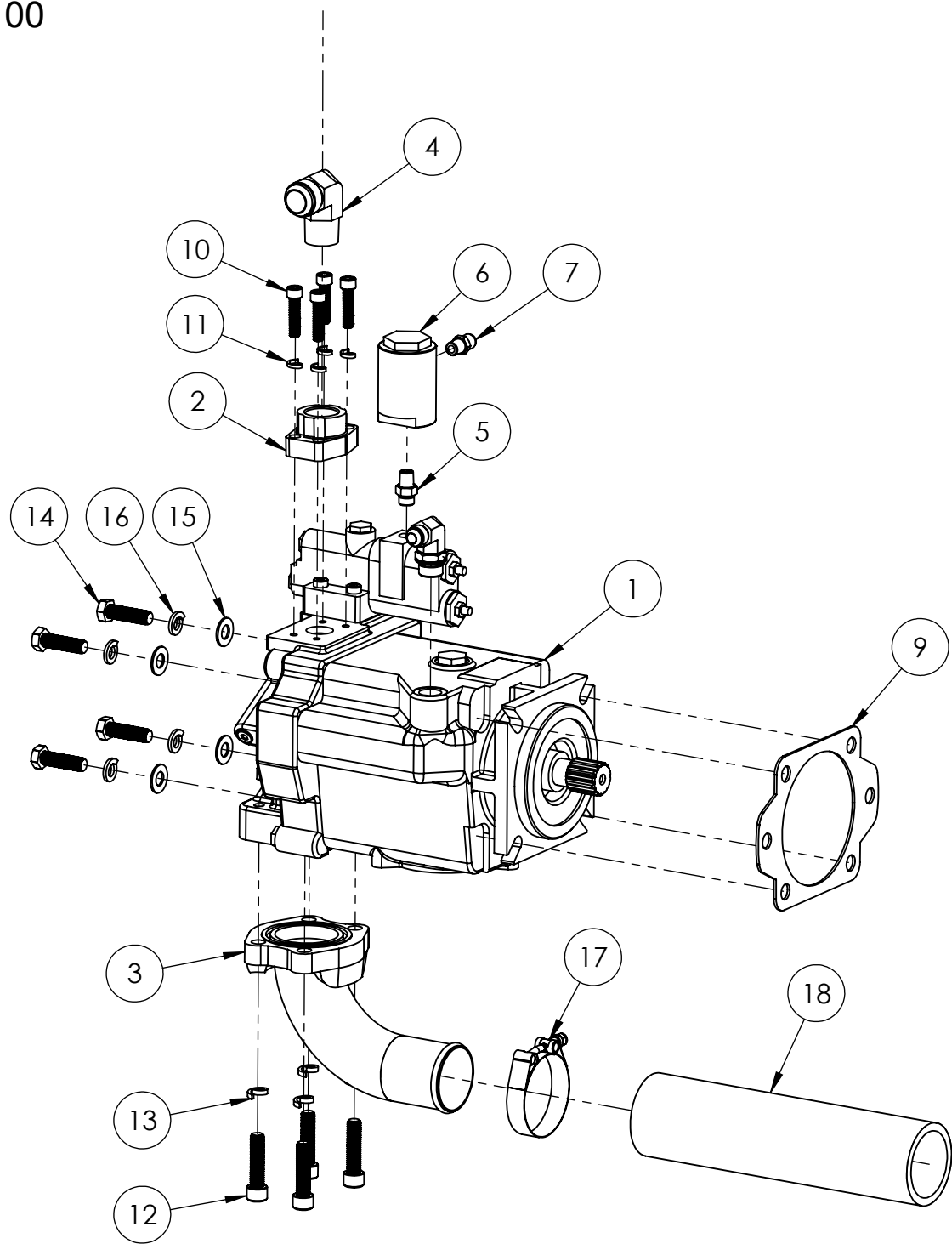
CS-2000-100



ITEM NO.	PART NUMBER	DESCRIPTION	QTY.
1	6040409	CC2000 Diesel Fuel Tank Weldment	1
2	2502851	Fuel Tank Cap, 2" NPT	1
3	3201385	3/8 MPT x 5/16 Hose Barb, 90°	1
4	3200955	3/8 x 3/8 MPT 90°	1
5	3201357	Ball Valve, 3/8"	1
6	2900013	3/8-16 X 1.25" HHCS	1
7	2903018	USS 3/8" Flat Washer	1
8	2900006	3/8 SPLIT LOCK WASHER	1
9	3200703	3/8 MPT X 3.8 Hose Barb	1
10	2503270	Hose Clamp #2	2
11	3201343	5/16 Fuel Line (Sold Per Inch)	1
12	3203296	3/8 Fuel Hose (Sold Per Inch)	1

Blade Motor Pump Assembly

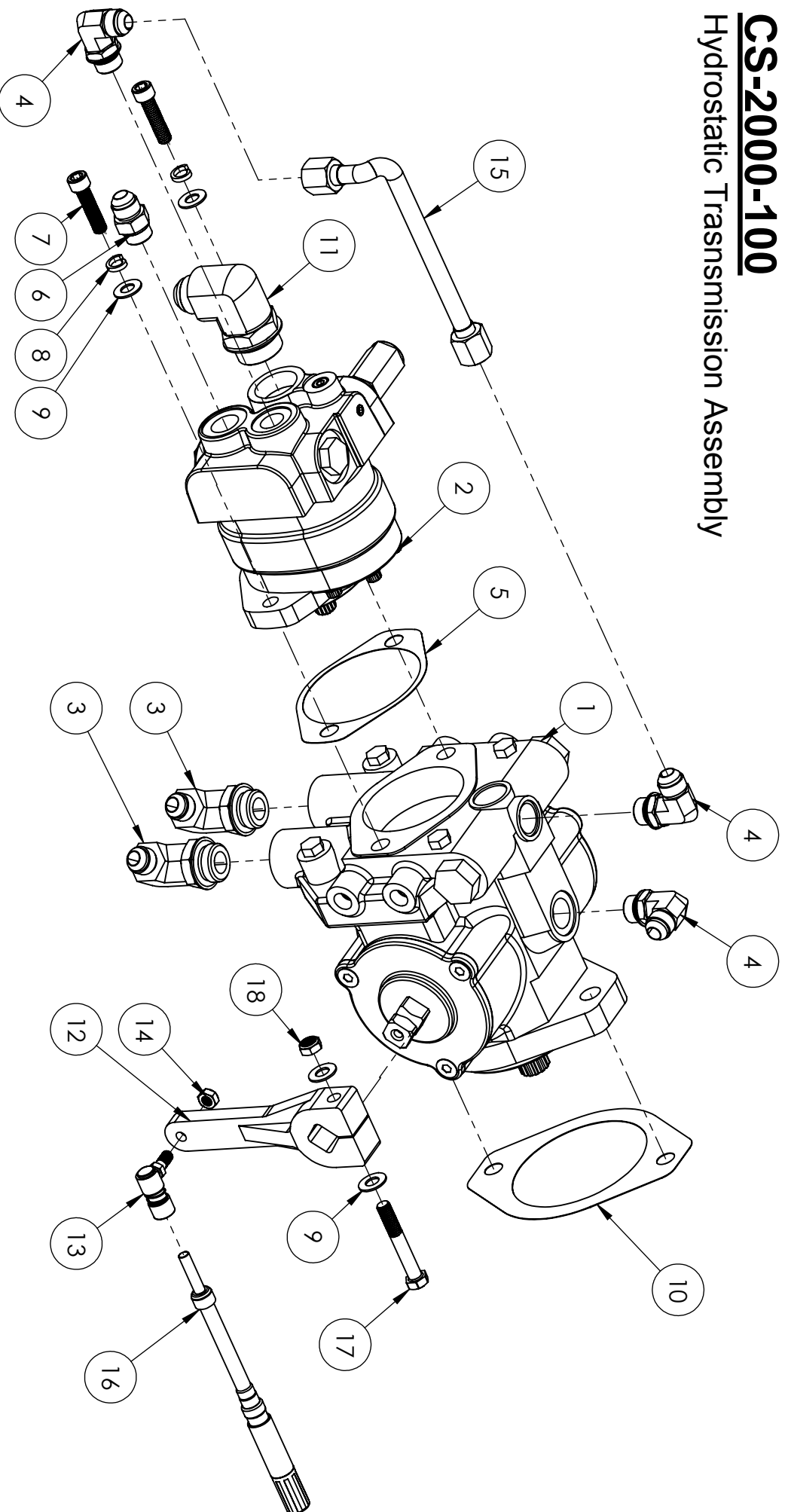
CS-2000-100



ITEM NO.	PART NUMBER	DESCRIPTION	QTY.	ITEM NO.	PART NUMBER	DESCRIPTION	QTY.
1	2601670	Hydraulic Pump, 6.0 in ³	1	10	2900357	3/8-16 x 1.50" SHCS	4
2	3200810	1.00" Code 61 Flange Kit	1	11	2903041	3/8 Machine Screw Split Lock Washer	4
3	3200810	2.50 Flange Kit	1	12	2903103	1/2-13 x 2.00 SHCS	4
4	3200289	Elbow, 16MJIC x 16MPT x 90 Deg	1	13	2903100	1/2 Machine Screw Split Lock Washer	4
5	3200785	#6 O-Ring x 1/4" MPT Staight	1	14	2900139	1/2-13 x 1.75" HHCS	4
6	3200724	In-Line Filter	1	15	2900058	1/2 SAE Flat Washer	4
7	3200720	6 MJIC x 4 MPT	1	16	2900084	1/2 SPLIT LOCK WASHER	4
8	3200803	Elbow Fitting, 1/2" MJIC x 5/8" MORB	1	17	3200847	Hose Clamp, T-Bolt 2.94-3.25	1
9	3200817	Gasket, C Mount	1	18	3200819	Suction Hose, 2-1/2" (SOLD PER IN)	1

CS-2000-100

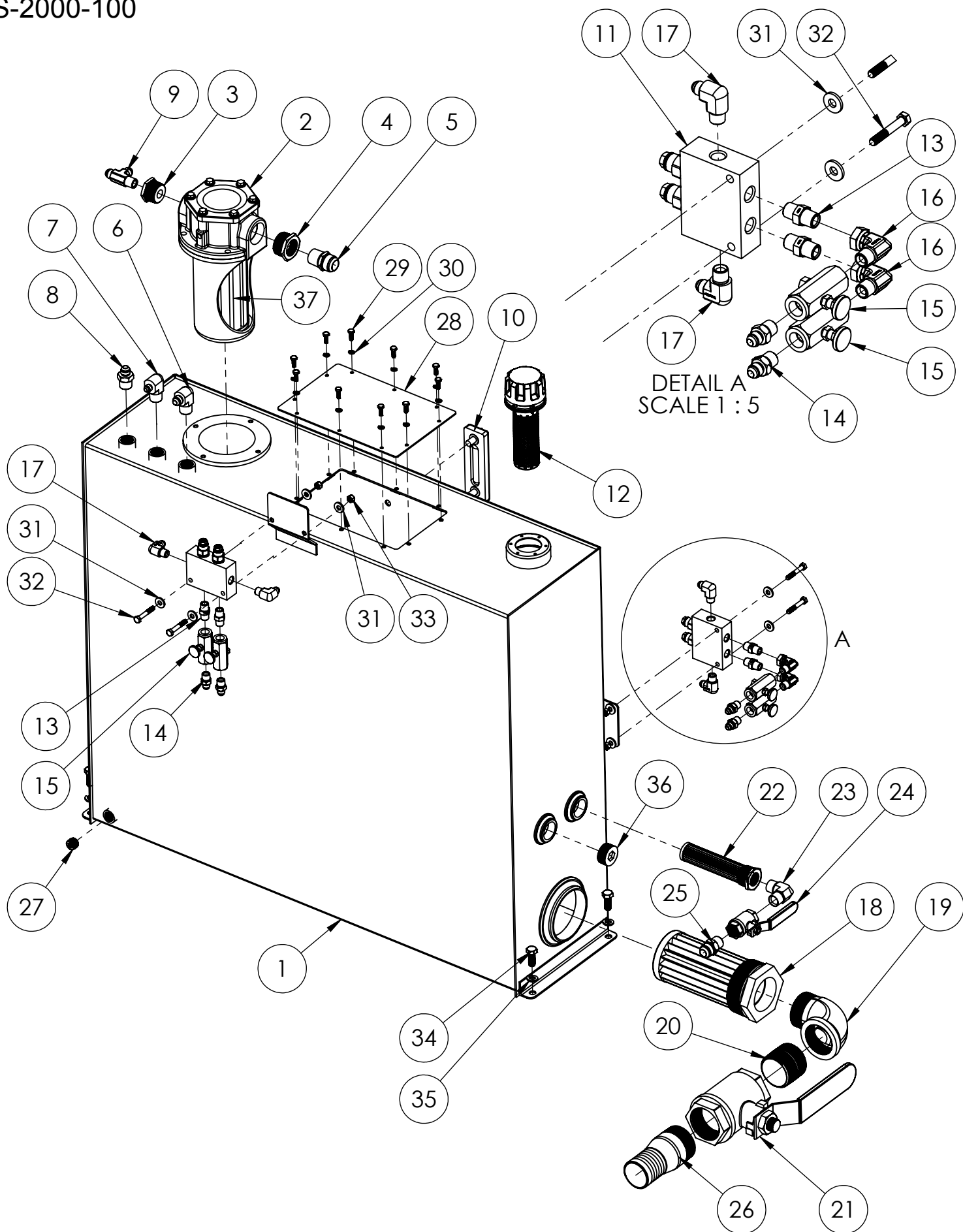
Hydrostatic Transmission Assembly



ITEM NO.	PART NUMBER	DESCRIPTION	QTY.	ITEM NO.	PART NUMBER	DESCRIPTION	QTY.
1	2603340	Hydrostatic Transmission Pump	1	10	3200815	SAE B 2 Bolt Gasket	1
2	3203286	Charge Pump, 26210-RAP	1	11	3201009	16 O-RING X 12 MJIC 90°	1
3	3200805	Elbow Fitting, 3/4"MORB x 1/2" MJIC	2	12	6070661	Lever, Control Shaft	1
4	2502924	Elbow Fitting, 1/2" MORB x 1/2" MJIC 90 Deg.	3	13	2502026	5/16"-24 BALL JOINT	1
5	3200816	Gasket, SAE A Pad	1	14	2902049	5/16-24 NYLON INSERT HEX NUT	1
6	3200804	Adaptor Fitting, 1/2" MJIC - 5/8"MORB	1	15	6070791	Hydraulic Line, Charge Pump	1
7	2900357	3/8-16 x 1.50" SHCS	2	16	2505913	Transmission Cable - 185"	1
8	2903041	3/8 Machine Screw Split Lock Washer	2	17	2900596	3/8-16 x 2.50" HHCS (Grade 5)	1
9	2900014	3/8" SAE Flat Washer	4	18	2901988	3/8-16 Nylon Insert Trin Nut	1

Hydraulic Reservoir Assembly

CS-2000-100



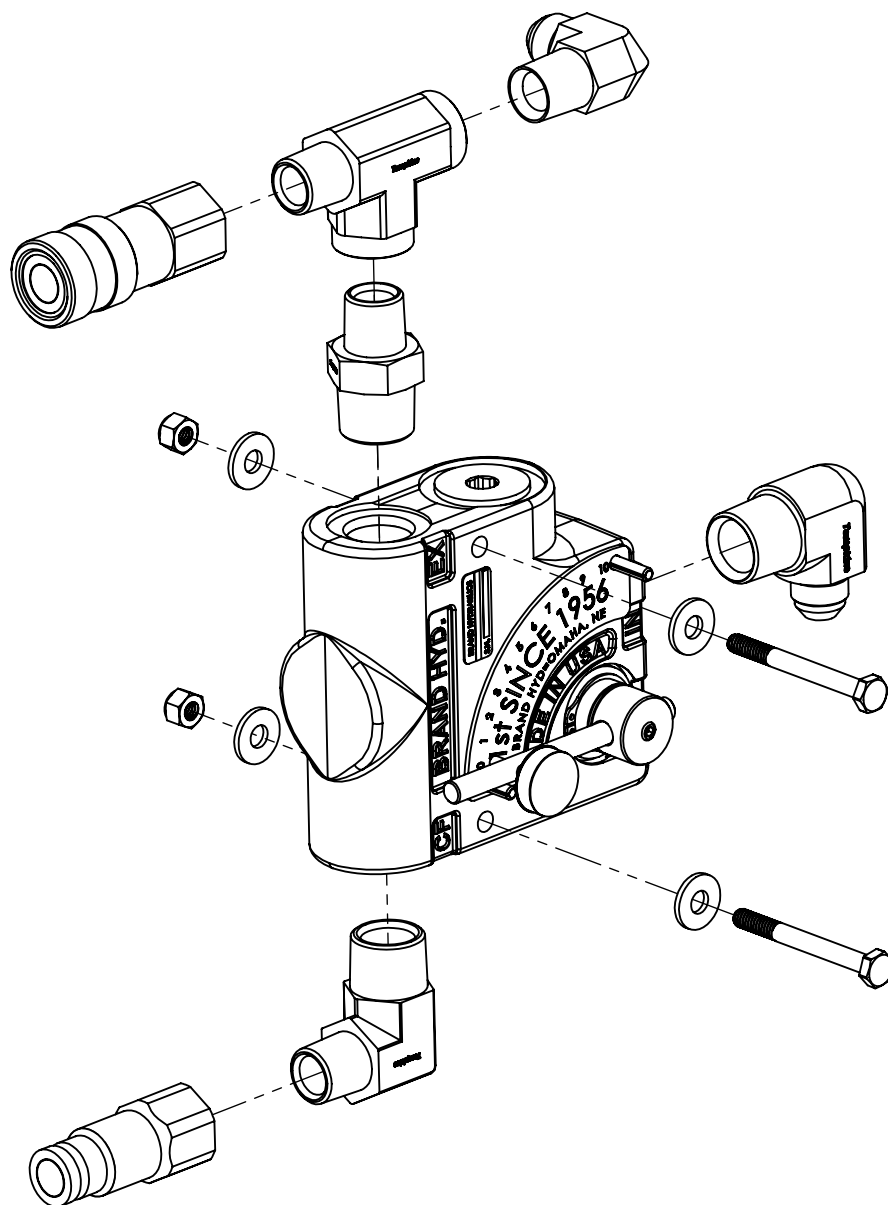
Hydraulic Reservoir Assembly

CS-2000-100

ITEM NO.	PART NUMBER	DESCRIPTION	QTY.
1	6040408	CC2000 Hydraulic Fluid Tank Weldment	1
2	3200731	Top Filter, Hyd. Tank	1
3	3200782	1.25" x .500" Hex Reducing Bushing	1
4	3200713	1.50" MP x 1.00" MP Bushing	1
5	3200663	Fitting, 1" NPT x 1" MJIC	1
6	3200806	.750" MP x .500" MJIC 90° Elbow	1
7	3201632	3/4 MPT x 3/8 MJIC 90°	1
8	3200807	.750 MPT x .500 MJIC Straight	1
9	3200808	2605-08-08-08	1
10	3200709	Gauge, Leveling	1
11	3200842	Load Holding Valve	2
12	3200729	Filler Breather Cap	1
13	3200795	3/8" MPT x 3/8" MPT Hex Coupler	4
14	3200799	.375" MPT x .375" MJIC Straight Fitting	4
15	3200812	3/8" Flow Control Valve	4
16	3200793	3/8" MPT x 3/8" FPT Swivel 90°	2
17	3200798	3/8" MPT x 3/8" MJIC 90°	4
18	3200849	Filter Strainer 100 Mesh 2-1/2"NPT	1
19	3201346	2-1/2" 90 Degree Street Elbow	1
20	3201347	2-1/2" NPT Coupler	1
21	3200830	2-1/2" Low Pressure Valve	1
22	3200848	1.25 x.75 Strainer	1
23	3200036	Elbow, 3/4" Male Pipe	1
24	3200823	3/4" Brass Ball Valve	1
25	3200744	12 MPT x 12 MJIC Hex Nipple	1
26	3201348	2.50 GALV. HOS BARB	1
27	3201097	1/2" Solid Hex-Socket Plug	1
28	6079227	Hydraulic Tank Cleanout Cover	1
29	2900008	1/4-20 x .750" Hex Head Cap Screw	10
30	2900024	1/4" Split Lock Washer	10
31	2900567	5/16" Flat Washer	8
32	2900494	5/16-18x2.00 HHCS	4
33	2900039	5/16"-18 Nylock Hex Nut	4
34	2900025	1/2-13 x 1.25 HHCS	4
35	2900084	1/2 SPLIT LOCK WASHER	4
36	3200756	1-1/4" NPT Plug, Hollow Hex Pipe	1
37	3200730	Filter Element, Top Filter	1

Auxiliary Manifold Assembly

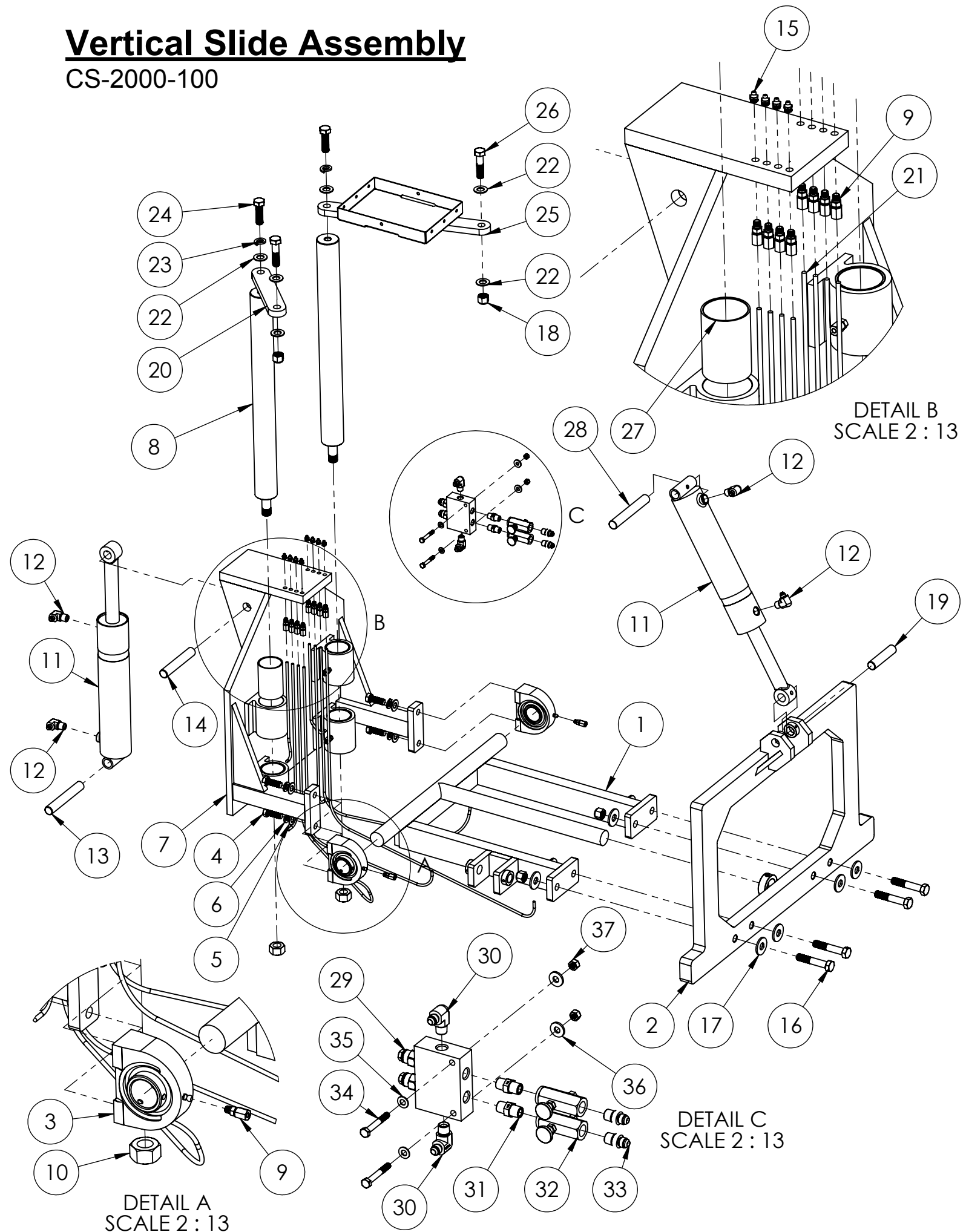
CS-2000-100



ITEM NO.	PART NUMBER	DESCRIPTION	QTY.
1	3200826	Flow Control Valve, 0-16 GPM	1
2	3200794	.750" MPT x .500" MPT Hex Nipple Fitting	1
3	3200790	.500" Street Tee Fitting	1
4	3201461	Elbow, 1/2" M. JIC to 1/2" M. Pipe	1
5	3200104	Coupler, 1/2" Q.D.	1
6	3200806	.750" MP x .500" MJIC 90° Elbow	1
7	3202546	3/4 MPT x 1/2 MPT 90° Pipe Elbow	1
8	3200105	Nipple, 1/2" Q.D.	1
9	2901001	1/4-20 x 2.50" Hex Head Cap Screw	2
10	2900126	1/4" USS Flat Washer	4
11	2900010	1/4-20 Nylon-Insert Hex Locknut	2

Vertical Slide Assembly

CS-2000-100



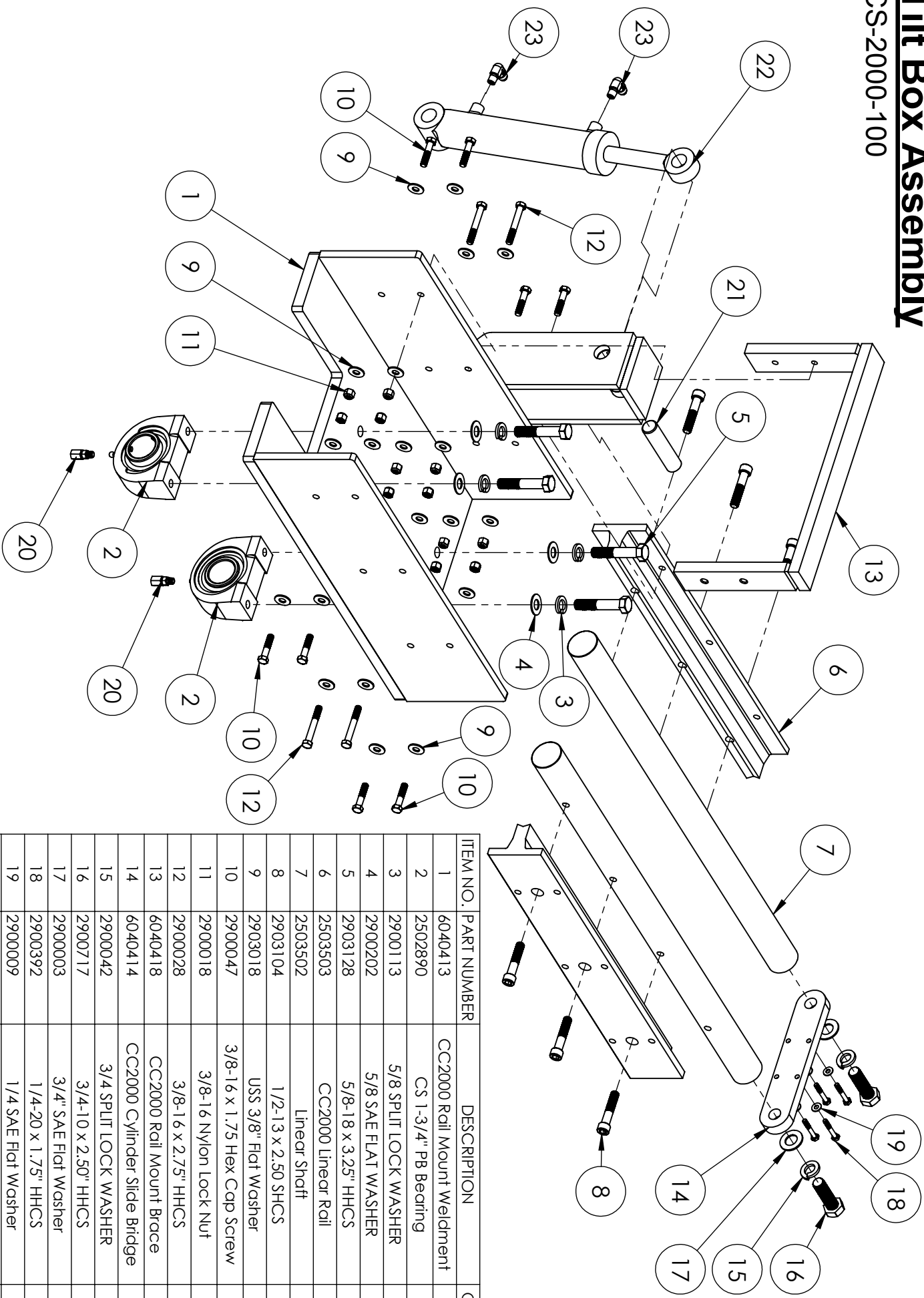
Vertical Slide Assembly

CS-2000-100

ITEM NO.	PART NUMBER	DESCRIPTION	QTY.
1	6040410	CC2000 Tilt Head Frame Weldment	1
2	6040412	CC2000 Head LIft Frame Weldment	1
3	2502890	CS 1-3/4" PB Bearing	2
4	2903124	5/8-18 x 1.75 HHCS (Grade 5)	4
5	2900202	5/8 SAE FLAT WASHER	4
6	2900113	5/8 SPLIT LOCK WASHER	4
7	6040411	Vertical Slide Assembly	1
8	2502860	CC2000 2.50" Vertical Shaft	2
9	3201276	1/4" Compression Tube Fitting	14
10	2900173	Hex Nut, 1"-14	2
11	3200824	3.00" x 12.00" Hydraulic Cylinder	2
12	3200956	.500" MPT x .375" MJIC 90° Fitting	4
13	6079347	Cylinder Pin, 6.75"	1
14	6079348	Cylinder Pin, 6.00"	1
15	2900062	Grease Fitting, 1/8" NPT	8
16	2904132	3/4-10 x 4.00" HHCS	4
17	2903136	3/4" USS Flat Washer	8
18	2900467	3/4-10 Nylon-Insert Hex Locknut	6
19	6079346	CC2000 4.50" Cylinder Pin	1
20	6079342	CC2000 Slide Shaft Short Bracket	1
21	1101483	1/4 OD HD Nylon Tubing (Sold Per In)	1
22	2900003	3/4" SAE Flat Washer	6
23	2900042	3/4 SPLIT LOCK WASHER	2
24	2900717	3/4-10 x 2.50" HHCS	2
25	6079343	Slide Support, Long	1
26	2903140	3/4-10x3.00" Hex Cap Screw	2
27	2502017	Bushing, 2-1/2 ID x 4.00	4
28	6040463	Cylinder Pin, 1.00 x 7.00	1
29	3200842	Load Holding Valve	1
30	3200798	3/8" MPT x 3/8" MJIC 90°	2
31	3200795	3/8" MPT x 3/8" MPT Hex Coupler	2
32	3200812	3/8" Flow Control Valve	2
33	3200799	.375" MPT x .375" MJIC Straight Fitting	2
34	2900289	5/16-18x2.25 HHCS	2
35	2900022	5/16 FLAT WASHER	10
36	2900567	5/16" Flat Washer	2
37	2900039	5/16"-18 Nylock Hex Nut	2

Tilt Box Assembly

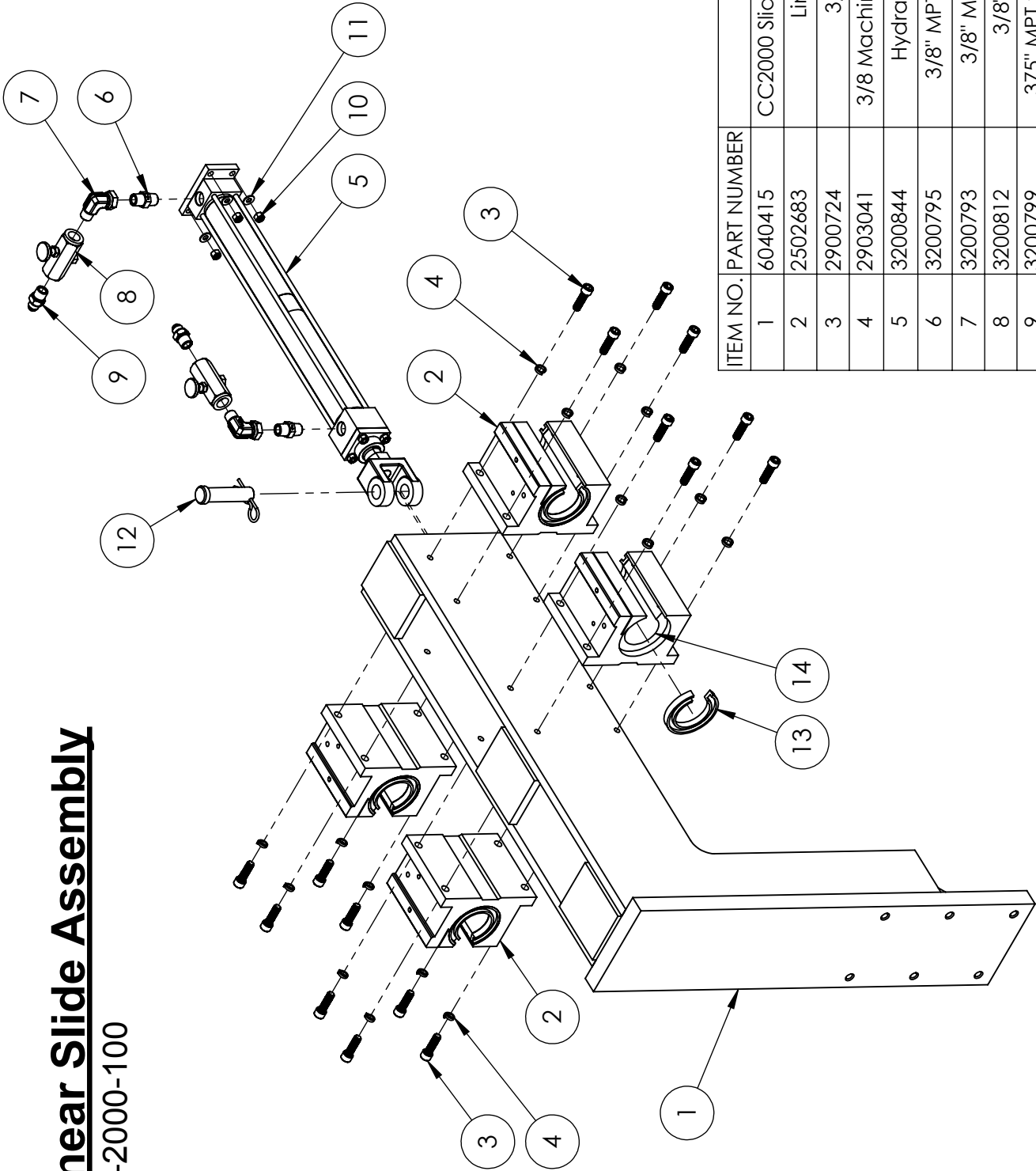
CS-2000-100



ITEM NO.	PART NUMBER	DESCRIPTION	QTY.
1	6040413	CC2000 Rail Mount Weldment	1
2	2502890	CS 1-3/4" PB Bearing	2
3	2900113	5/8 SPLT LOCK WASHER	4
4	2900202	5/8 SAE FLAT WASHER	4
5	2903128	5/8-18 x 3.25" HHCS	4
6	2503503	CC2000 Linear Rail	2
7	2503502	Linear Shaft	2
8	2903104	1/2-13 x 2.50 SHCS	6
9	2903018	USS 3/8" Flat Washer	24
10	2900047	3/8-16 x 1.75 Hex Cap Screw	8
11	2900018	3/8-16 Nylon Lock Nut	12
12	2900028	3/8-16 x 2.75" HHCS	4
13	6040418	CC2000 Rail Mount Brace	1
14	6040414	CC2000 Cylinder Slide Bridge	1
15	2900042	3/4 SPLT LOCK WASHER	2
16	2900717	3/4-10 x 2.50" HHCS	2
17	2900003	3/4" SAE Flat Washer	2
18	2900392	1/4-20 x 1.75" HHCS	4
19	2900009	1/4 SAE Flat Washer	4
20	3201276	1/4" Compression Tube Fitting	2
21	6079344	CC2000 4.25" Cylinder Pin	1
22	2702681	CC2000 Blade Angle Cylinder	1
23	3200796	.375" MJIC x .250" MPT 90° Fitting	2

Linear Slide Assembly

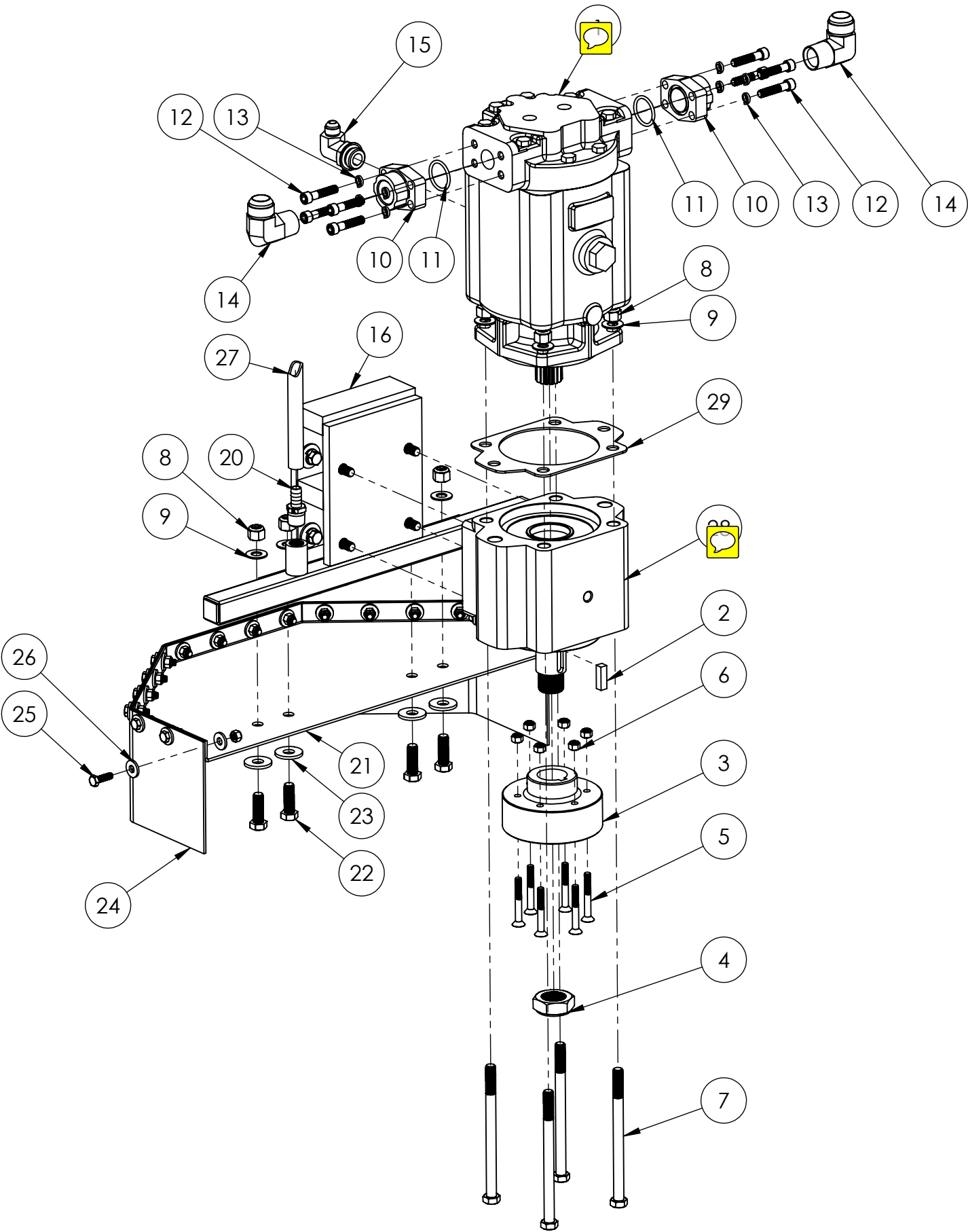
CS-2000-100



ITEM NO.	PART NUMBER	DESCRIPTION	QTY.
1	6040415	CC2000 Slide Bearing Mount Weldment	1
2	2502683	Linear Bushing, 2.00"	4
3	2900724	3/8-16 x 1-1/4 SHCS	16
4	2903041	3/8 Machine Screw Split Lock Washer	16
5	3200844	Hydraulic Cylinder, 1.5 x 15.0	1
6	3200795	3/8" MPT x 3/8" MPT Hex Coupler	2
7	3200793	3/8" MPT x 3/8" FPT Swivel 90°	2
8	3200812	3/8" Flow Control Valve	2
9	3200799	.375" MPT x .375" MJIC Straight Fitting	2
10	2900010	1/4-20 Nylon-Insert Hex Locknut	4
11	2900009	1/4 SAE Flat Washer	4
12	2902334	Clevis Pin, 3/4 x 2-3/4	1
13	2502679	External Seal, Linear Bearing	1
14	2506809	Bushing, Linear Bearing (REPLACEMENT)	1

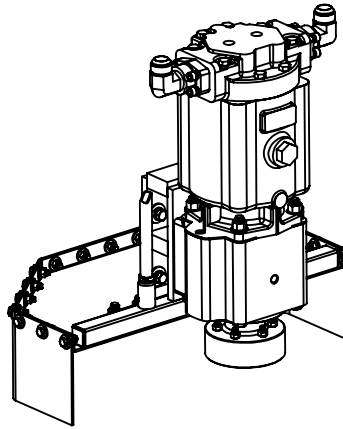
Blade Motor Assembly

CS-2000-100



Blade Motor Assembly

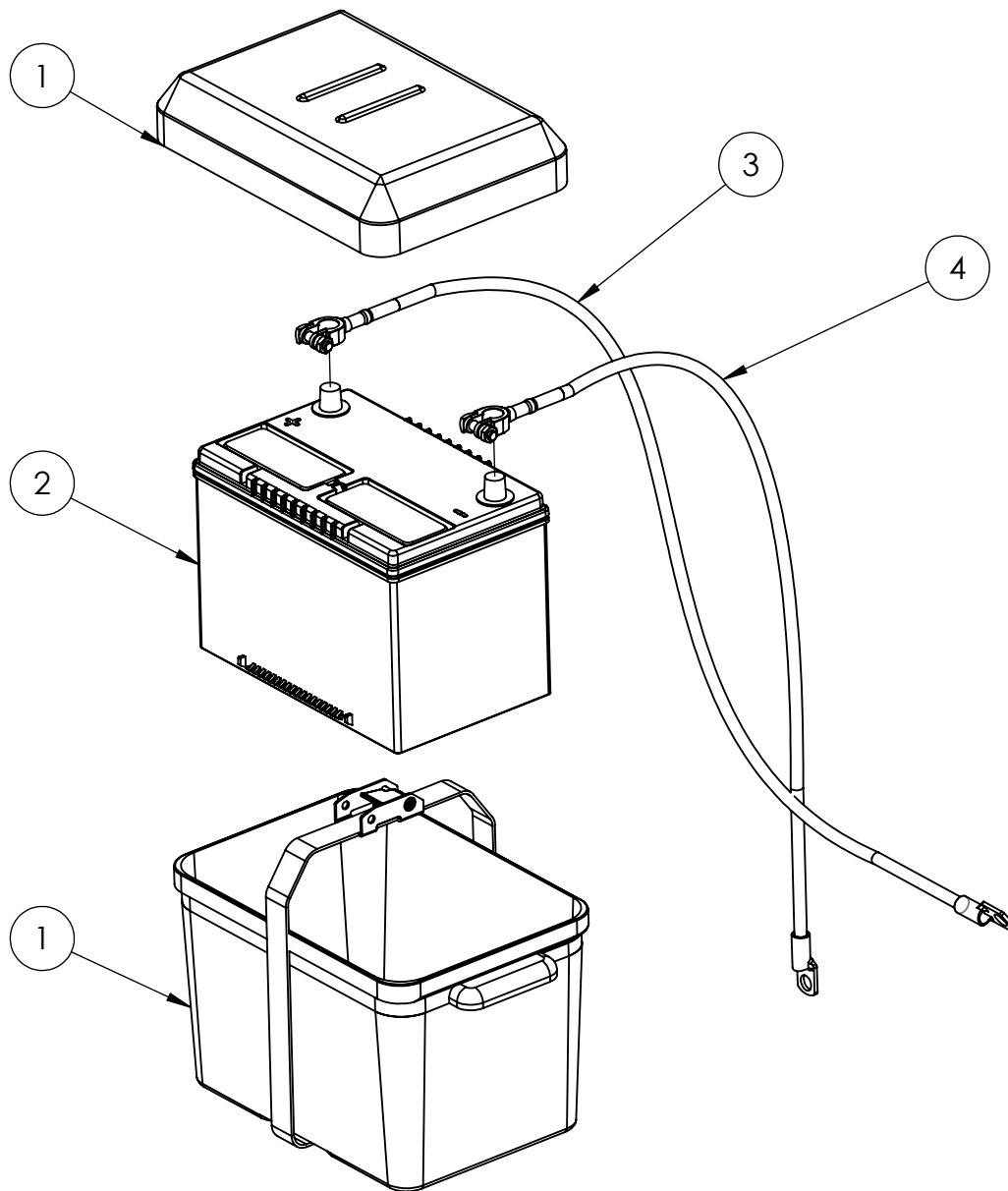
CS-2000-100



ITEM NO.	PART NUMBER	DESCRIPTION	QTY.
1	2601675	Hydraulic Motor, 5.49in ³	1
2	2505902	Key, 3/8 x 1.25"	1
3	6040431	Blade Hub, 5"	1
4	2900713	1.25-12 Thin Nylock Hex Nut	1
5	2900728	5/16-18 x 2.50" Flat Socket Head Cap	6
6	2900039	Screw 5/16"-18 Nylock Hex Nut	24
7	2903098	1/2-13 x 7.00" HHCS	4
8	2900026	1/2-13 Nylon-Insert Hex Locknut	8
9	2900058	1/2 SAE Flat Washer	8
10	3200810	1.00" Code 61 Flange Kit	2
11	9452K39	O-Ring, -219	2
12	2900124	3/8-16 x 1.75" SHCS	8
13	2903041	3/8 Machine Screw Split Lock Washer	8
14	3200289	Elbow, 16MJIC x 16MPT x 90 Deg	2
15	3200805	Elbow Fitting, 3/4" MØRB x 1/2" MJIC	1
16	6040490	Blade Motor Mount	1
17	2901287	7/16-14 x 1.50" HHCS	8
18	2903055	7/16 USS Standard Washer	8
19	2900238	7/16 SPLIT LOCK WASHER	8
20	3201349	1/2 Hose Barb to 1/2 MPT Brass	1
21	6040405	CC2000 Blade Guard Weldment	1
22	2900499	1/2-13x1.50 HHCS	4
23	2900127	1/2" USS Flat Washer	4
24	2507123	8.00" Rubber Belting (Sold Per Inch	1
25	2900138	5/16-18x1.00 HHCS	18
26	2900567	5/16" Flat Washer	36
27	3201312	1/2" ID Water Hose	1
28	2503608	Bearing Block	1
29	3200817	Gasket. C Mount	1

Battery Assembly

CS-2000-100



ITEM NO.	PART NUMBER	DESCRIPTION	QTY.
1	2502702	Battery Box	1
2	2802571	Battery, 12 Volt Group Size 34	1
3	6070794	Battery Cable, Positive	1
4	6070795	Battery Cable, Ground	1

CS-2000-100 (1803097)



EQUIPMENT AND PARTS WARRANTY

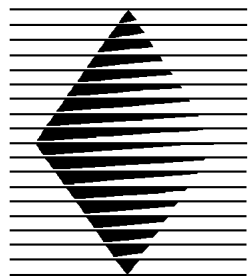
Diamond Products warrants all equipment manufactured by it against defects in workmanship or materials for a period of one (1) year from the date of shipment to Customer.

The responsibility of Diamond Products under this Warranty is limited to replacement or repair of defective parts at Diamond Products' Elyria, Ohio factory, or at a point designated by it, of such parts as shall appear to us upon inspection at such parts, to have been defective in material or workmanship, with expense for transportation and labor borne by Customer.

In no event shall Diamond Products be liable for consequential or incidental damages arising out of the failure of any Product to operate properly.

Integral units such as engines, electric motors, batteries, transmissions, etc., are excluded from this Warranty and are subject to the prime manufacturer's warranty.

THIS WARRANTY IS IN LIEU OF ALL OTHER WARRANTIES, EXPRESSED OR IMPLIED, AND ALL SUCH OTHER WARRANTIES ARE HEREBY DISCLAIMED.



**DIAMOND
PRODUCTS**

333 Prospect Street, Elyria, Ohio 44035
(440) 323-4616 • (800) 321-5336 • Fax (440) 323-8689
www.diamondproducts.com