



# M-2

## CORE RIG

## PARTS LIST

**September 9, 2015**

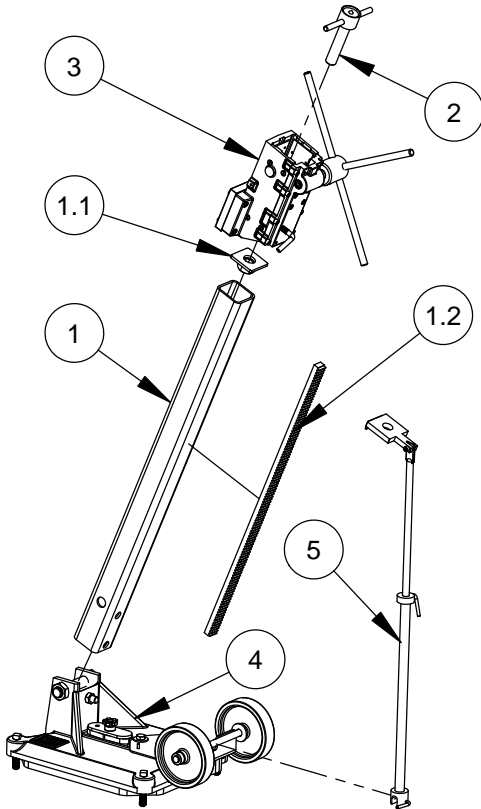
**Part # 1890004**

Intentionally Blank

## **Table of Contents**

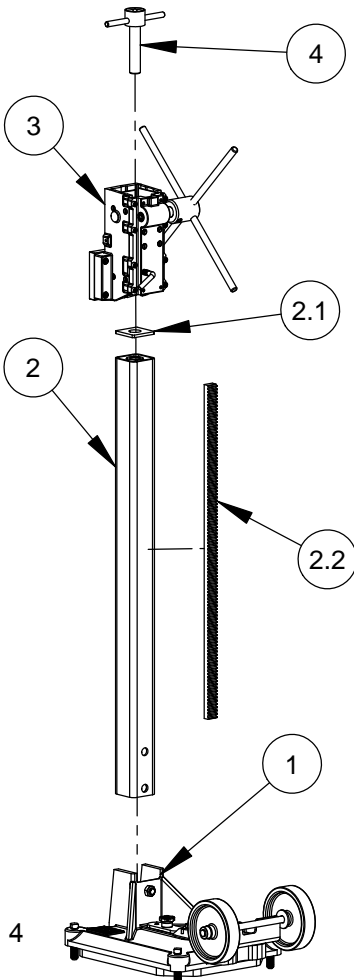
|   |         |
|---|---------|
| Angle and Anchor Combination Stands.....                        | 4       |
| Angle Anchor and Anchor Stands.....                             | 5       |
| Large Anchor Drill Stand.....                                   | 6       |
| Angle Combination Base Assembly.....                            | 7       |
| Combination Base Assembly.....                                  | 8       |
| Angle Anchor Base Assembly .....                                | 9       |
| Small Anchor Base Assembly.....                                 | 10      |
| Web Base Assembly.....  | 11      |
| Carriage Assembly for CB748 and Milwaukee Motors.....           | 12 - 13 |
| Carriage Assembly for CB700 and Weka Motors .....               | 14 -15  |
| Motor Mount for CB700 and Weka Motors .....                     | 16      |
| Motor Mount for CB748 and Milwaukee Motors.....                 | 17      |
| Spoke Handle Assembly.....                                      | 18      |
| Axle Assembly .....   | 19      |
| Angle Brace Assembly.....                                       | 20      |
| Vacuum Pump Assembly.....                                       | 22 - 23 |
| Dual Switch/Dual Outlet Control Panel 115V.....                 | 24 – 25 |
| Dual Switch/Dual Outlet Control Panel for Weka Motor 115V ..... | 26 – 27 |
| Straight Masts with Gear Racks .....                            | 28      |
| Angle Masts with Gear Racks.....                                | 29      |
| Accessories   |         |
| Dovetail Motor Mount Quick Disconnect .....                     | 31      |
| Quick Disconnect Assembly.....                                  | 32      |
| Quick Disconnect Motor Mount and Plate Assemblies.....          | 33      |
| Quick Disconnect 7" and 10" Outrigger Assemblies.....           | 34      |
| Roller Carriage Assembly .....                                  | 36 – 37 |
| Side Roller and Adjustable Roller Assemblies .....              | 38      |
| Warranty .....  | 40      |

## **M-2 Angled and Standard Combination Stands**



### **Angle Combination Stand #4241056**

| ITEM | PART NO. | QTY. | DESCRIPTION                     |
|------|----------|------|---------------------------------|
| 1    | 4641068  | 1    | Angle Mast with Gear Rack - 42" |
| 1.1  | 6090482  | 1    | Plate Mast Top                  |
| 1.2  | 2400170  | 1    | Gear Rack - 32"                 |
| 2    | 4641001  | 1    | Ceiling Jack                    |
| 3*   | 4641035  | 1    | Complete Carriage Assembly      |
| 4    | 4641070  | 1    | Angle Combination Base Assembly |
| 5    | 4641077  | 1    | Angle Brace Assembly            |



### **Combination Drill Stand #4241055**

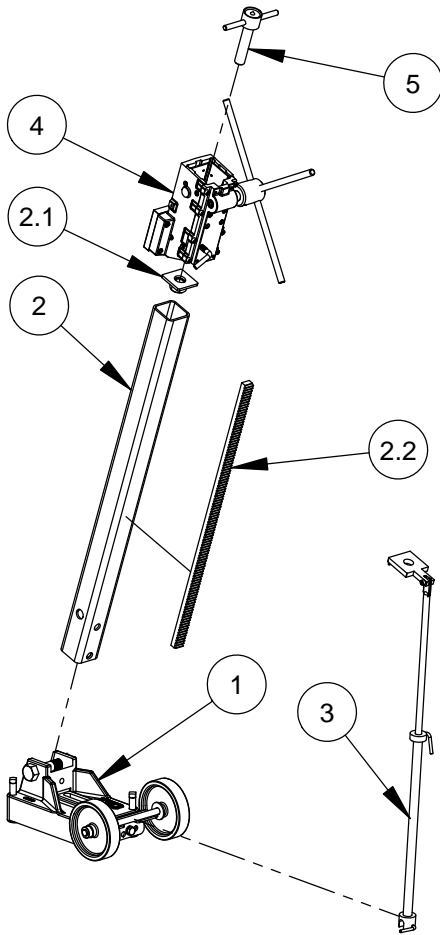
| ITEM | PART NO. | QTY. | DESCRIPTION                   |
|------|----------|------|-------------------------------|
| 1    | 4241060  | 1    | M-2 Combination Base Assembly |
| 2    | 4641002  | 1    | Rig Mast - 42"                |
| 2.1  | 6090482  | 1    | Plate Mast Top                |
| 2.2  | 2400170  | 1    | Gear Rack - 32"               |
| 3*   | 4641035  | 1    | Complete Carriage Assembly    |
| 4    | 4641001  | 1    | Ceiling Jack                  |

\* NOTE: Complete carriage assembly, #4641035

includes motor mount for the CB748 and Milwaukee motors.

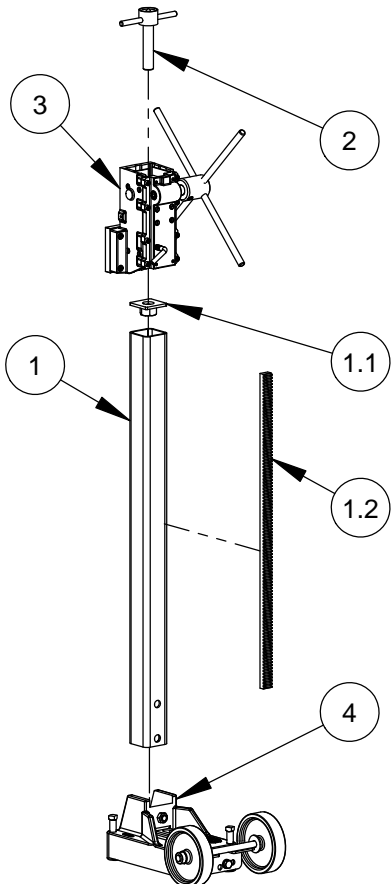
For CB700 and Weka motors use complete carriage assembly #4640129.

## M-2 Angle Anchor and Standard Anchor Stands



### Angle Anchor Stand #4241110

| ITEM | PART NO. | QTY. | DESCRIPTION                     |
|------|----------|------|---------------------------------|
| 1    | 4641071  | 1    | Angle Anchor Base               |
| 2    | 4641068  | 1    | Angle Mast with Gear Rack - 42" |
| 2.1  | 6090482  | 1    | Plate Mast Top                  |
| 2.2  | 2400170  | 1    | Gear Rack - 32"                 |
| 3    | 4641077  | 1    | Angle Brace Assembly            |
| 4*   | 4641035  | 1    | Complete Carriage Assembly      |
| 5    | 4641001  | 1    | Ceiling Jack                    |

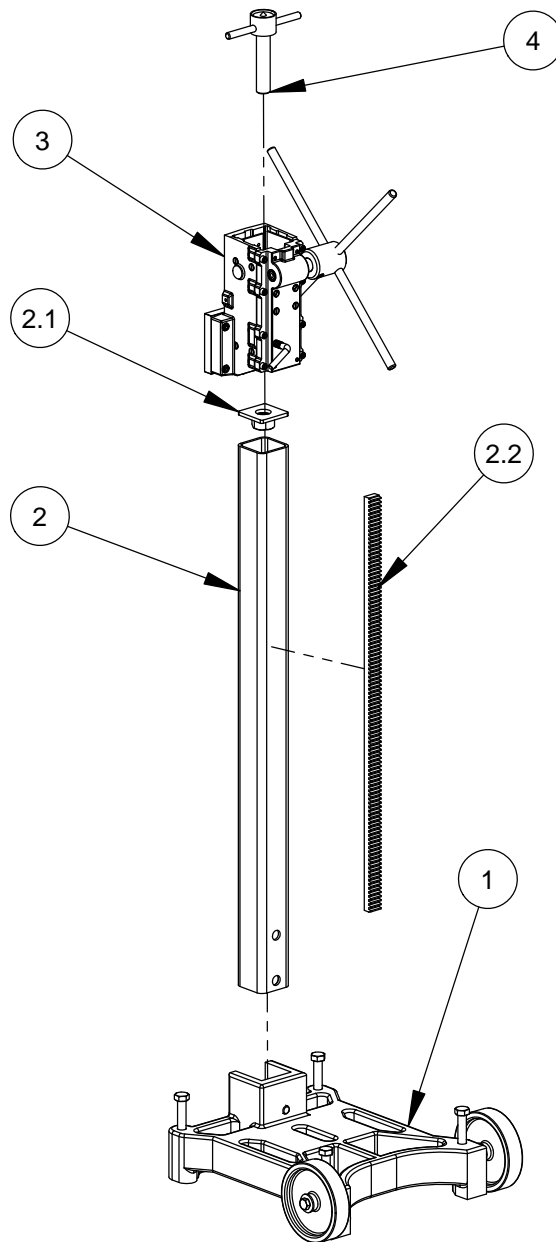


### Small Anchor Stand #4241100

| ITEM | PART NO. | QTY. | DESCRIPTION                |
|------|----------|------|----------------------------|
| 1    | 4641002  | 1    | Rig Mast - 42"             |
| 1.1  | 6090482  | 1    | Plate Mast Top             |
| 1.2  | 2400170  | 1    | Gear Rack - 32"            |
| 2    | 4641001  | 1    | Ceiling Jack               |
| 3*   | 4641035  | 1    | Complete Carriage Assembly |
| 4    | 4241105  | 1    | Small Anchor Base Assembly |

\* NOTE: Complete carriage assembly, #4641035  
includes motor mount for the CB748 and Milwaukee motors.  
For CB700 and Weka motors use complete carriage assembly #4640129.

## **M-2 Large Anchor Drill Stand #4241064**



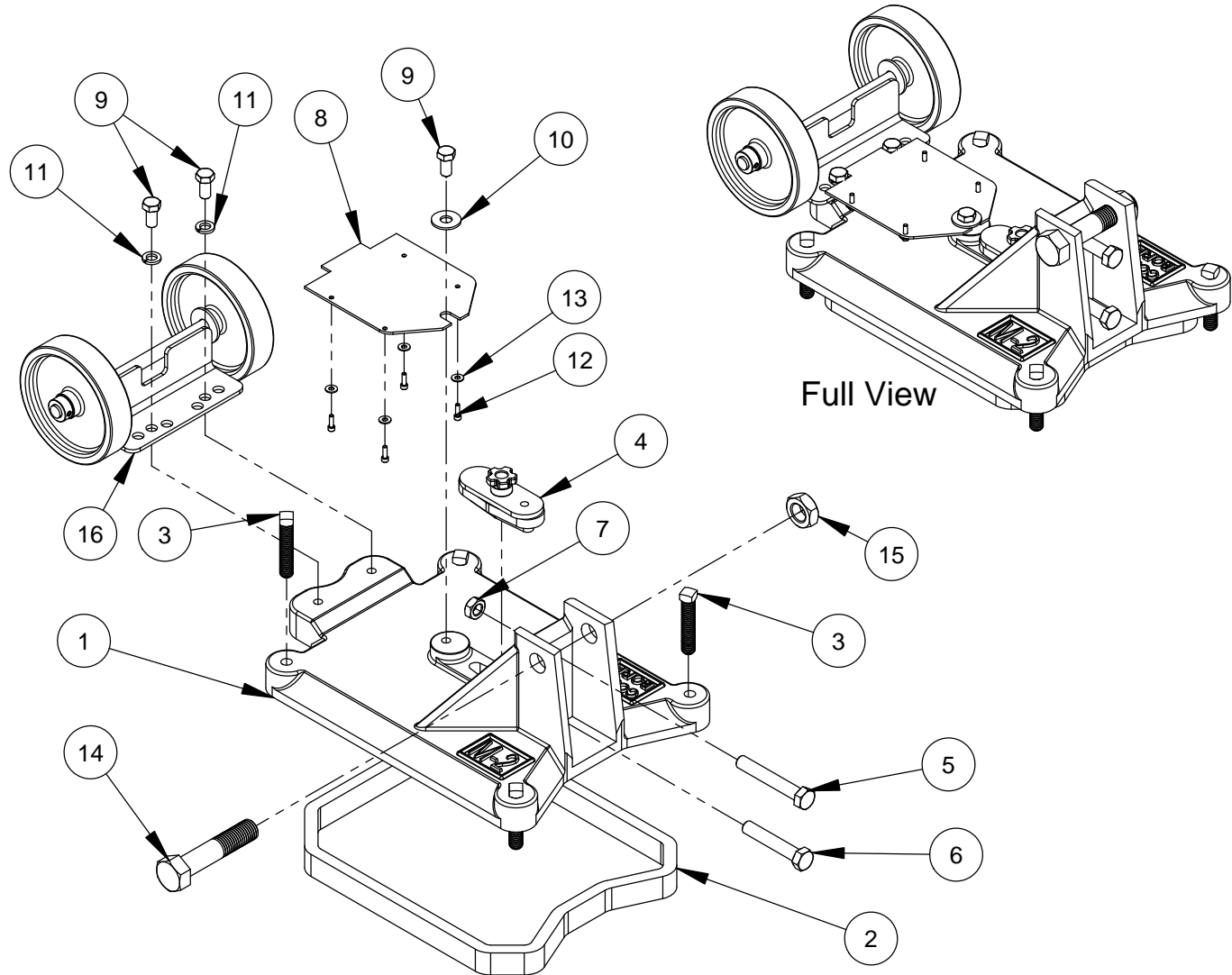
| ITEM | PART NO. | QTY. | DESCRIPTION                |
|------|----------|------|----------------------------|
| 1    | 4241063  | 1    | Web Anchor Base Assembly   |
| 2    | 4641002  | 1    | Rig Mast - 42"             |
| 2.1  | 6090482  | 1    | Plate Mast Top             |
| 2.2  | 2400170  | 1    | Gear Rack - 32"            |
| 3*   | 4641035  | 1    | Complete Carriage Assembly |
| 4    | 4641001  | 1    | Ceiling Jack               |

\*NOTE: Complete carriage assembly, #4641035

includes motor mount for the CB748 and Milwaukee motors.

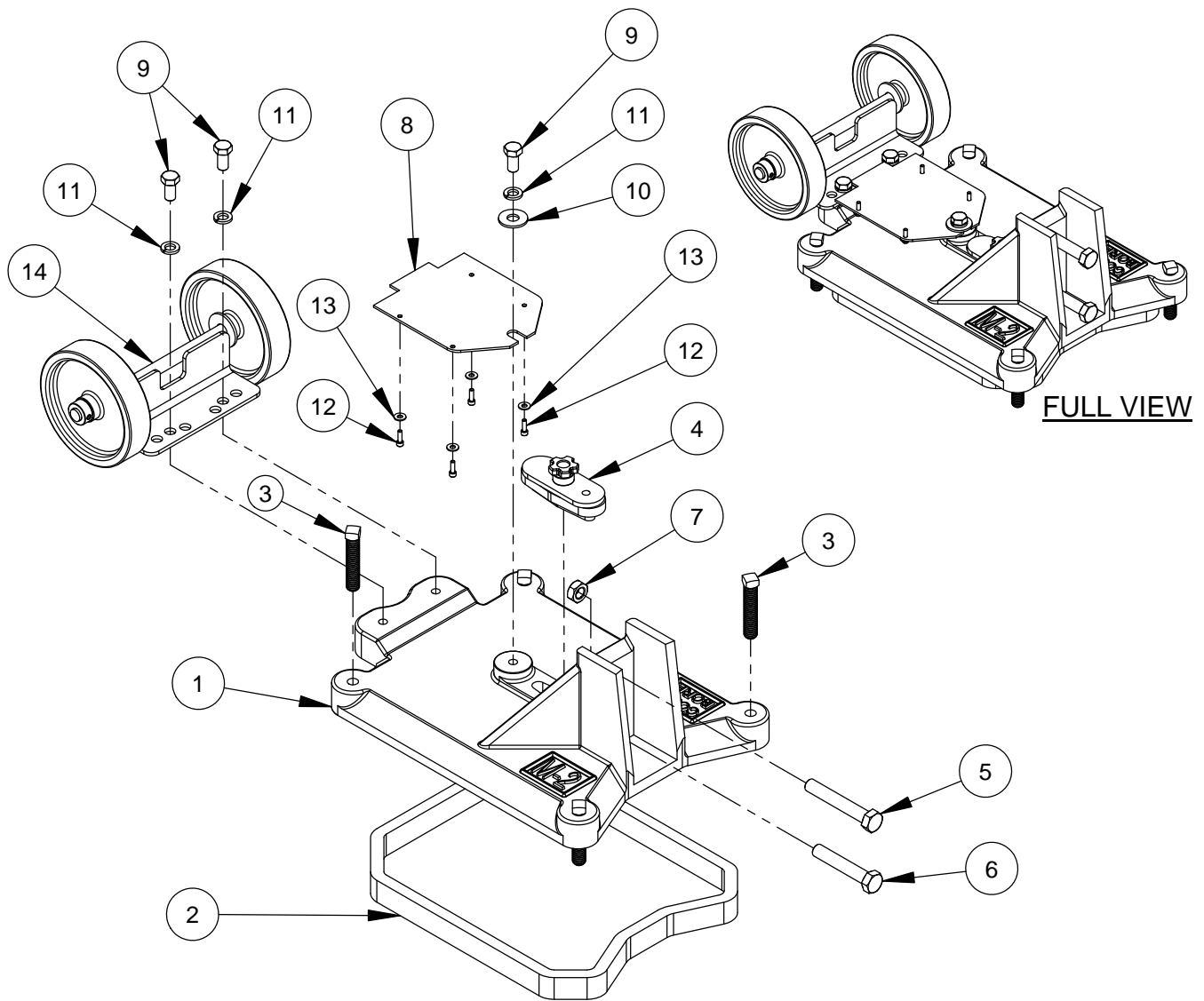
For CB700 and Weka motors use complete carriage assembly #4640129.

## Angle Combination Base Assembly #4641070



| ITEM | PART NO. | QTY. | DESCRIPTION                         |
|------|----------|------|-------------------------------------|
| 1    | 4641075  | 1    | M-2 Combination Base                |
| 2    | 4641024  | 1    | M-2 Vacuum Gasket                   |
| 3    | 2900081  | 4    | Set Screw, Sq. Hd., 5/8-11 x 3"     |
| 4    | 4600046  | 1    | Slot Cap Assembly                   |
| 5    | 2900146  | 1    | Cap Screw, Hex Hd., 5/8-11 x 4"     |
| 6    | 2900099  | 1    | Cap Screw, Hex Hd., 5/8-11 x 3-1/2" |
| 7    | 2900256  | 1    | Jam Nut, 5/8-11                     |
| 8    | 4645022  | 1    | Vacuum Platform                     |
| 9    | 2900086  | 3    | Cap Screw, Hex Hd., 1/2-13 x 1"     |
| 10   | 2900127  | 1    | Flat Washer, 1/2" USS               |
| 11   | 2900084  | 2    | Lock Washer, 1/2" Split             |
| 12   | 2900087  | 4    | Cap Screw, Soc. Hd., #10-32 x 5/8"  |
| 13   | 2900016  | 4    | Flat Washer, #10 USS                |
| 14   | 2900097  | 1    | Cap Screw, Hex Hd., 1-8 x 4-3/4"    |
| 15   | 2900098  | 1    | Jam Nut, 1"-8                       |
| 16   | 4645046  | 1    | Wheel Assembly                      |

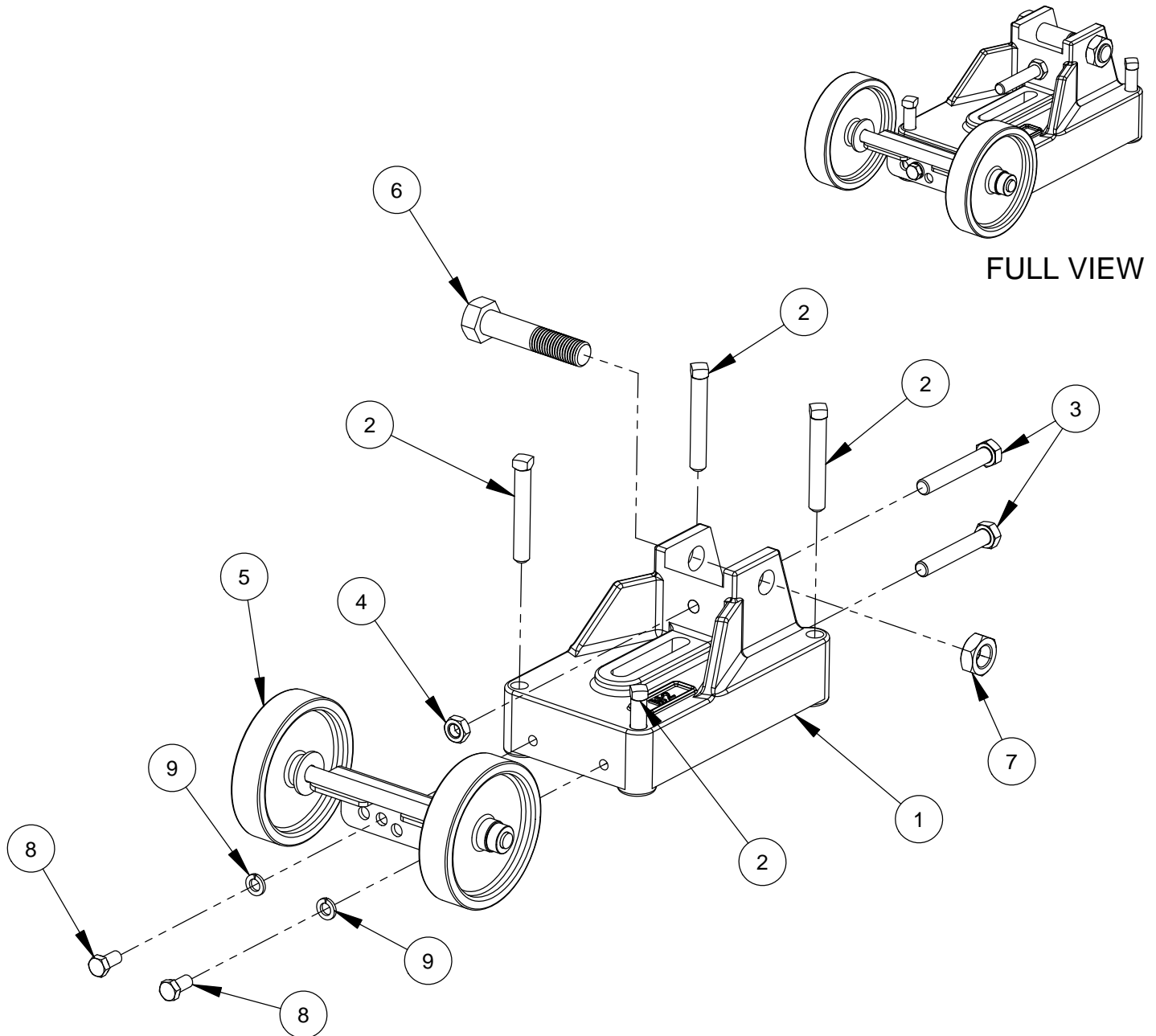
## **Combination Base Assembly #4241060**



| ITEM | PART NO. | QTY. | DESCRIPTION                         |
|------|----------|------|-------------------------------------|
| 1    | 4641025  | 1    | M-2 Combination Base Only           |
| 2    | 4641024  | 1    | M-2 Vacuum Gasket                   |
| 3    | 2900081  | 4    | Set Screw, Sq. Hd., 5/8-11 x 3"     |
| 4    | 4600046  | 1    | Slot Cap Assembly                   |
| 5    | 2900146  | 1    | Cap Screw, Hex Hd., 5/8-11 x 4"     |
| 6    | 2900099  | 1    | Cap Screw, Hex Hd., 5/8-11 x 3-1/2" |
| 7    | 2900256  | 1    | Jam Nut, 5/8-11                     |
| 8    | 4645022  | 1    | Vacuum Platform                     |
| 9    | 2900086  | 3    | Cap Screw, Hex Hd., 1/2-13 x 1"     |
| 10   | 2900127  | 1    | Flat Washer, 1/2" USS               |
| 11   | 2900084  | 3    | Lock Washer, 1/2" Split             |
| 12   | 2900087  | 4    | Cap Screw, Soc. Hd., #10-32 x 5/8"  |
| 13   | 2900016  | 4    | Flat Washer, #10 USS                |
| 14   | 4645046  | 1    | Wheel Assembly                      |

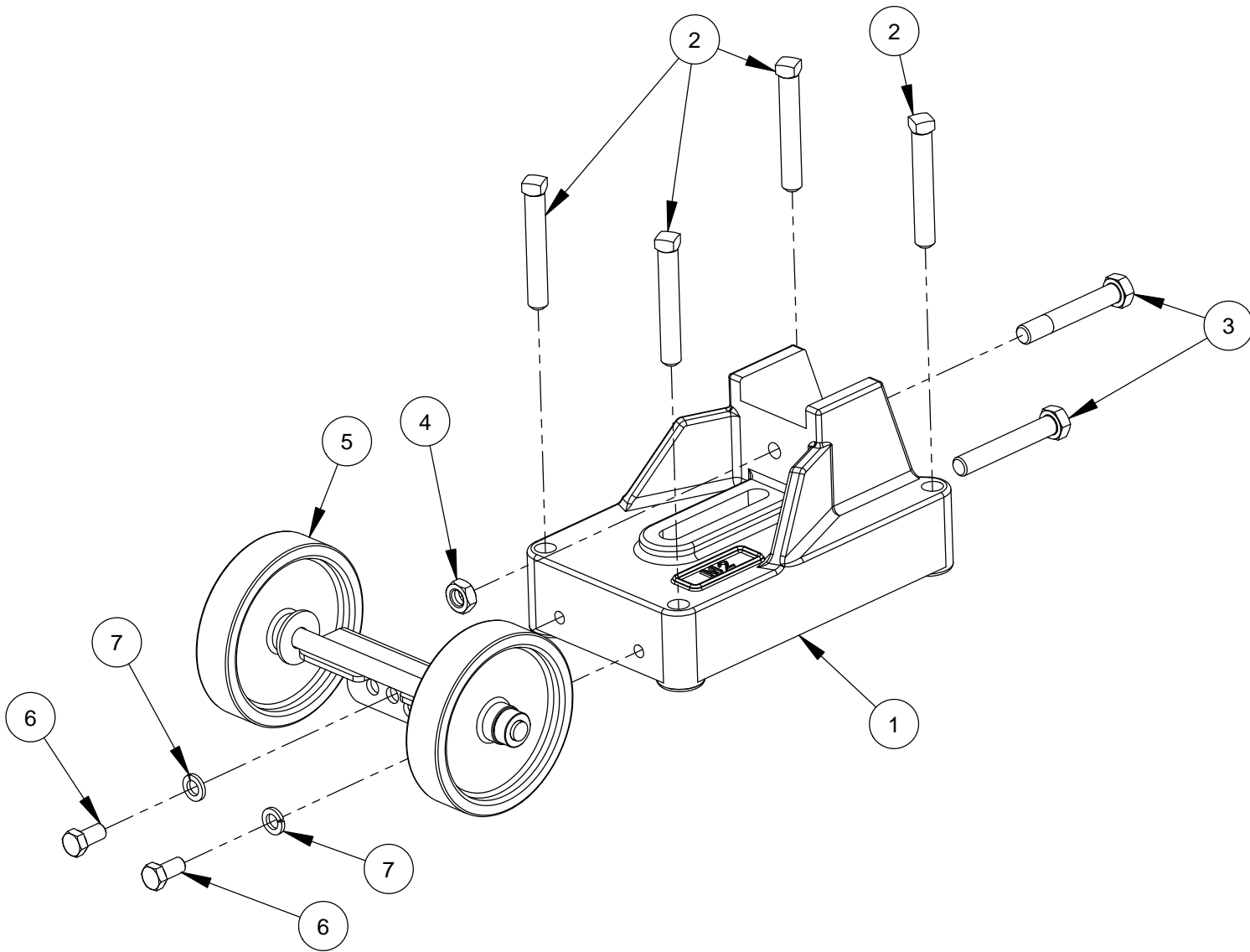


## **Angle Anchor Base Assembly #4641071**



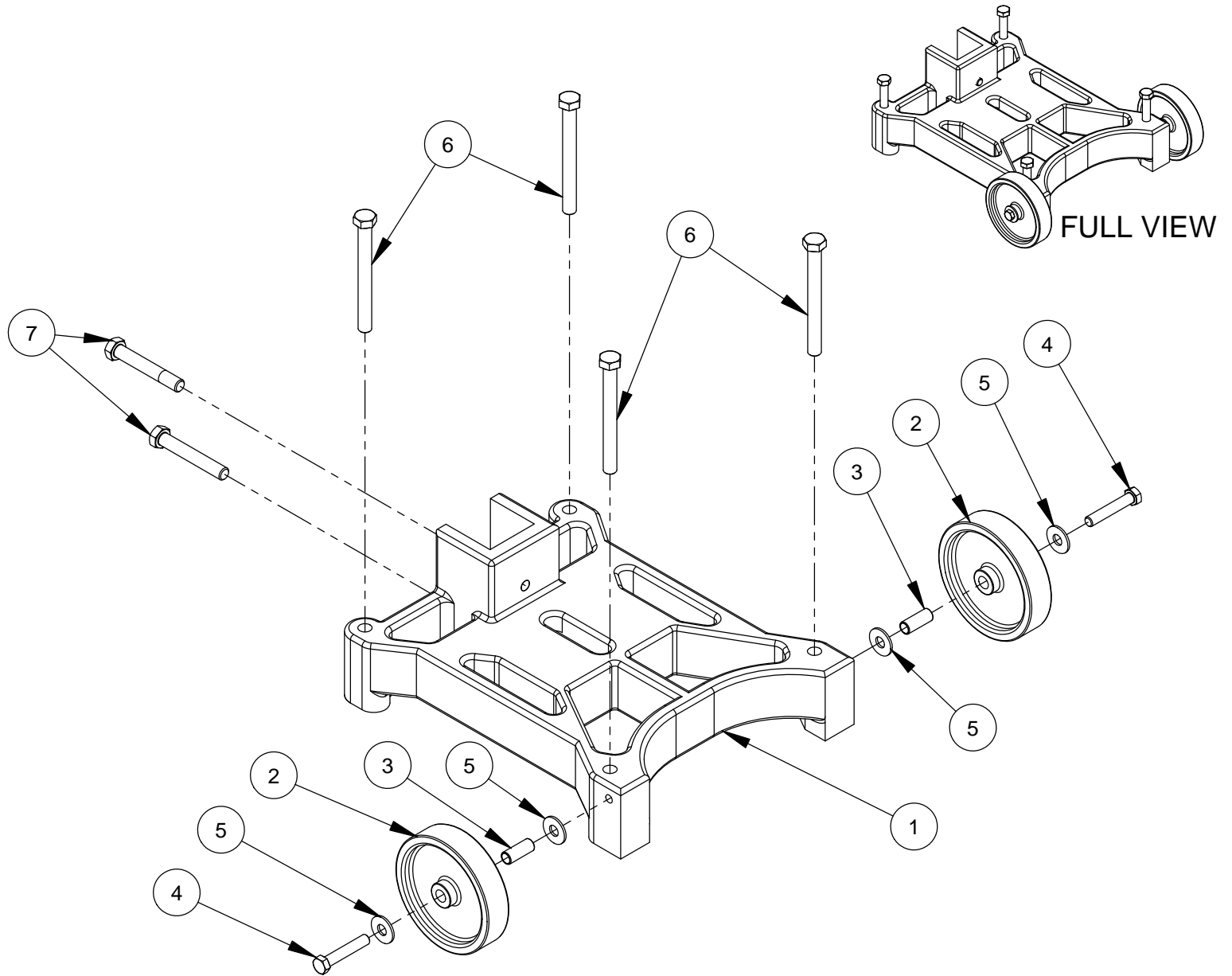
| ITEM | PART NO. | QTY. | DESCRIPTION                           |
|------|----------|------|---------------------------------------|
| 1    | 4641072  | 1    | M-2 Anchor Angle Base                 |
| 2    | 2900100  | 4    | Set Screw, Soc. Hd., Sq., 5/8-11 x 4" |
| 3    | 2900146  | 2    | Cap Screw, Hex Hd., 5/8-11 x 4"       |
| 4    | 2900256  | 1    | Jam Nut, 5/8-11                       |
| 5    | 4645046  | 1    | Wheel Assembly                        |
| 6    | 2900097  | 1    | Cap Screw, Hex Hd., 1-8 x 4-3/4"      |
| 7    | 2900098  | 1    | Jam Nut, 1"-8                         |
| 8    | 2900086  | 2    | Cap Screw, Hex Hd., 1/2-13 x 1"       |
| 9    | 2900084  | 2    | Lock Washer, 1/2" Split               |

## **Small Anchor Base Assembly #4241105**



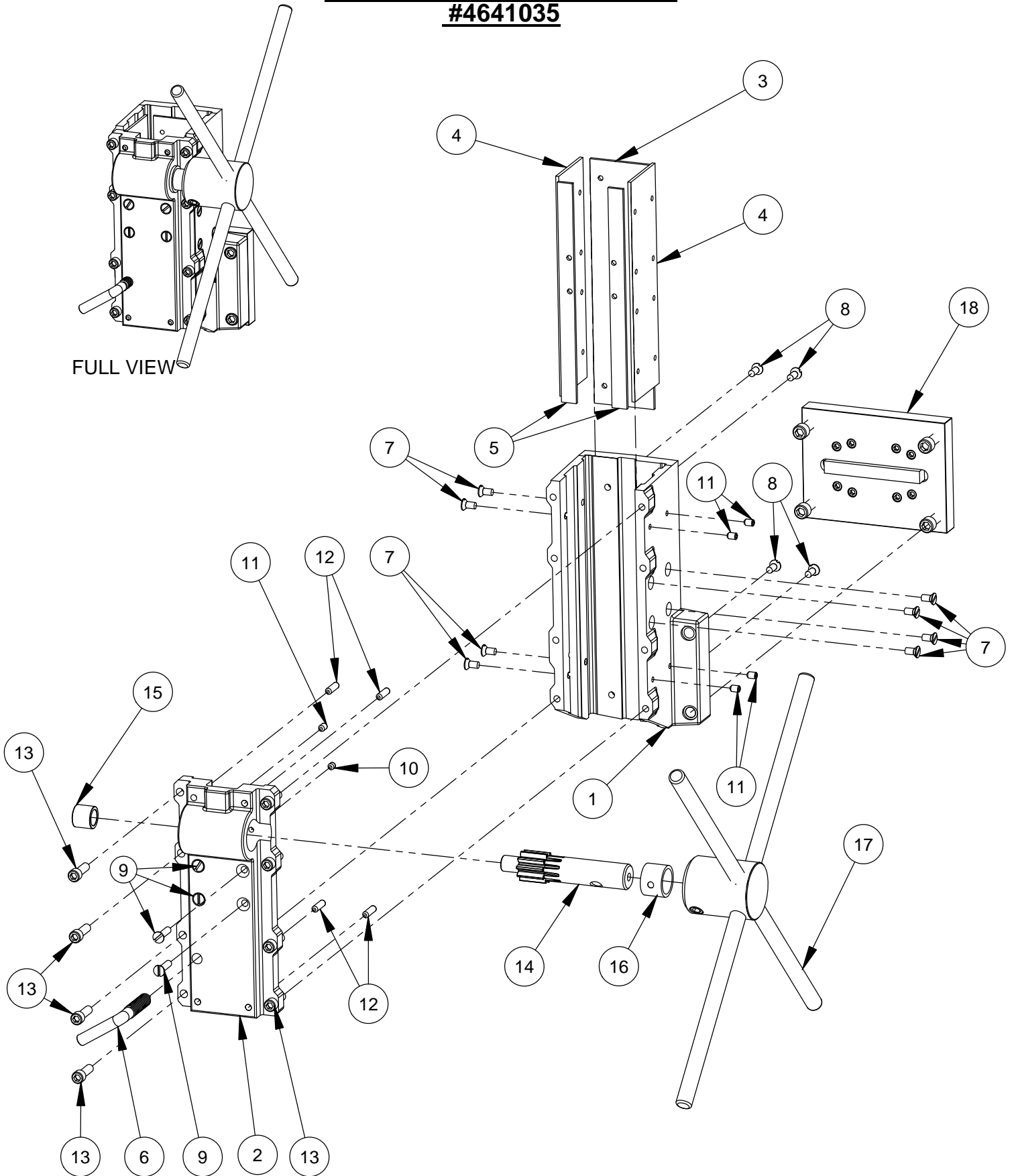
| ITEM | PART NO. | QTY. | DESCRIPTION                           |
|------|----------|------|---------------------------------------|
| 1    | 4641004  | 1    | Anchor Base                           |
| 2    | 2900100  | 4    | Set Screw, Soc. Hd., Sq., 5/8-11 x 4" |
| 3    | 2900146  | 2    | Cap Screw, Hex Hd., 5/8-11 x 4"       |
| 4    | 2900256  | 1    | Jam Nut, 5/8-11                       |
| 5    | 4645046  | 1    | Wheel Assembly                        |
| 6    | 2900086  | 2    | Cap Screw, Hex Hd., 1/2-13 x 1"       |
| 7    | 2900084  | 2    | Lock Washer, 1/2" Split               |

## **Web Base Anchor Assembly #4241063**



| ITEM | PART NO. | QTY. | DESCRIPTION                         |
|------|----------|------|-------------------------------------|
| 1    | 4641005  | 1    | Web Anchor Base                     |
| 2    | 2400004  | 2    | Wheel, 6"                           |
| 3    | 4641006  | 2    | Wheel Bushing                       |
| 4    | 2900105  | 2    | Cap Screw, Hex Hd., 1/2-13 x 2-3/4" |
| 5    | 2900127  | 4    | Flat Washer, 1/2" USS               |
| 6    | 2900104  | 4    | Tap Bolt, Hex Hd., 5/8-11 x 6"      |
| 7    | 2900146  | 2    | Cap Screw, Hex Hd., 5/8-11 x 4"     |

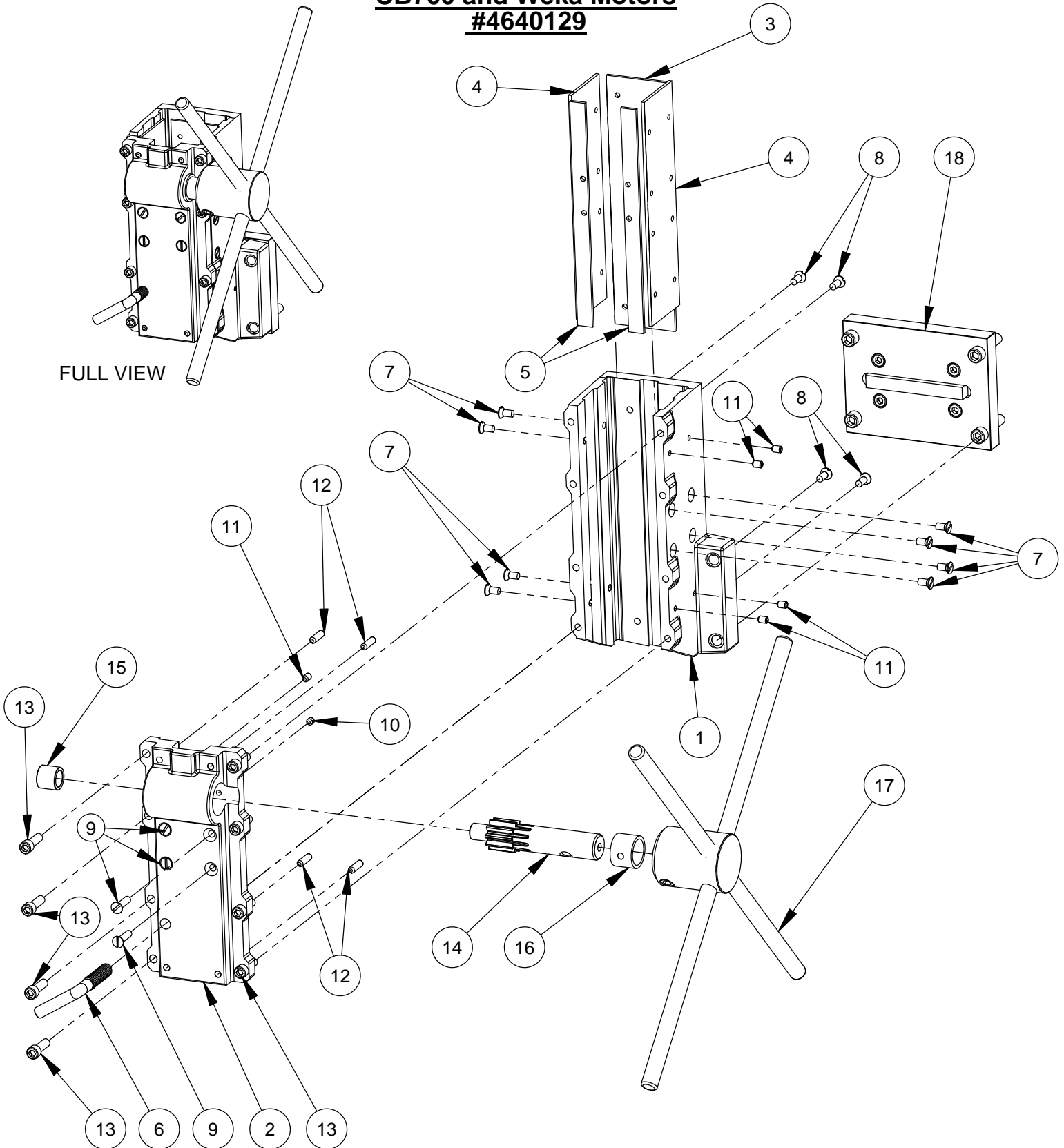
**M-2 Carriage Assembly with Motor Mount**  
**CB748 and Milwaukee Motors**  
**#4641035**



**M-2 Carriage Assembly with Motor Mount**  
**CB748 and Milwaukee Motors**  
**#4641035**

| ITEM | PART NO. | QTY. | DESCRIPTION                              |
|------|----------|------|--|
| 1    | 4641017  | 1    | Carriage Housing                         |
| 2    | 4641013  | 1    | Carriage Plate                           |
| 3    | 4641018  | 1    | Non-Adjusting Shim                       |
| 4    | 4641020  | 2    | Adjusting Shim - 2 1/2" W                |
| 5    | 4641012  | 2    | Adjusting Shim - 5/8" W                  |
| 6    | 2900078  | 1    | "L"-Bolt, 1/2-13                         |
| 7    | 2900102  | 8    | Cap Screw, Flat Hd., 1/4-20 x 1/2" Brass |
| 8    | 2900074  | 4    | Cap Screw, Flat Hd., 1/4-20 x 5/8" Brass |
| 9    | 2900075  | 4    | Cap Screw, Flat Hd., 1/4-20 x 1" Brass   |
| 10   | 2900056  | 1    | Set Screw, Soc. Hd., 1/4-20 x 1/4"       |
| 11   | 2900101  | 5    | Set Screw, Soc. Hd., 1/4-20 x 3/8"       |
| 12   | 2900077  | 4    | Set Screw, Soc. Hd., 1/4-20 x 7/8"       |
| 13   | 2900103  | 8    | Cap Screw, Soc. Hd., 5/16-18 x 1"        |
| 14   | 4641022  | 1    | Pinion Gear                              |
| 15   | 2400005  | 1    | Bearing - 5/8" X 7/8" x 3/4"             |
| 16   | 4645026  | 1    | Bushing, 1" x 1-1/4" x 7/8"              |
| 17   | 4641015  | 1    | Spoke Handle Assembly                    |
| 18   | 4641009  | 1    | Motor Mount Assembly                     |

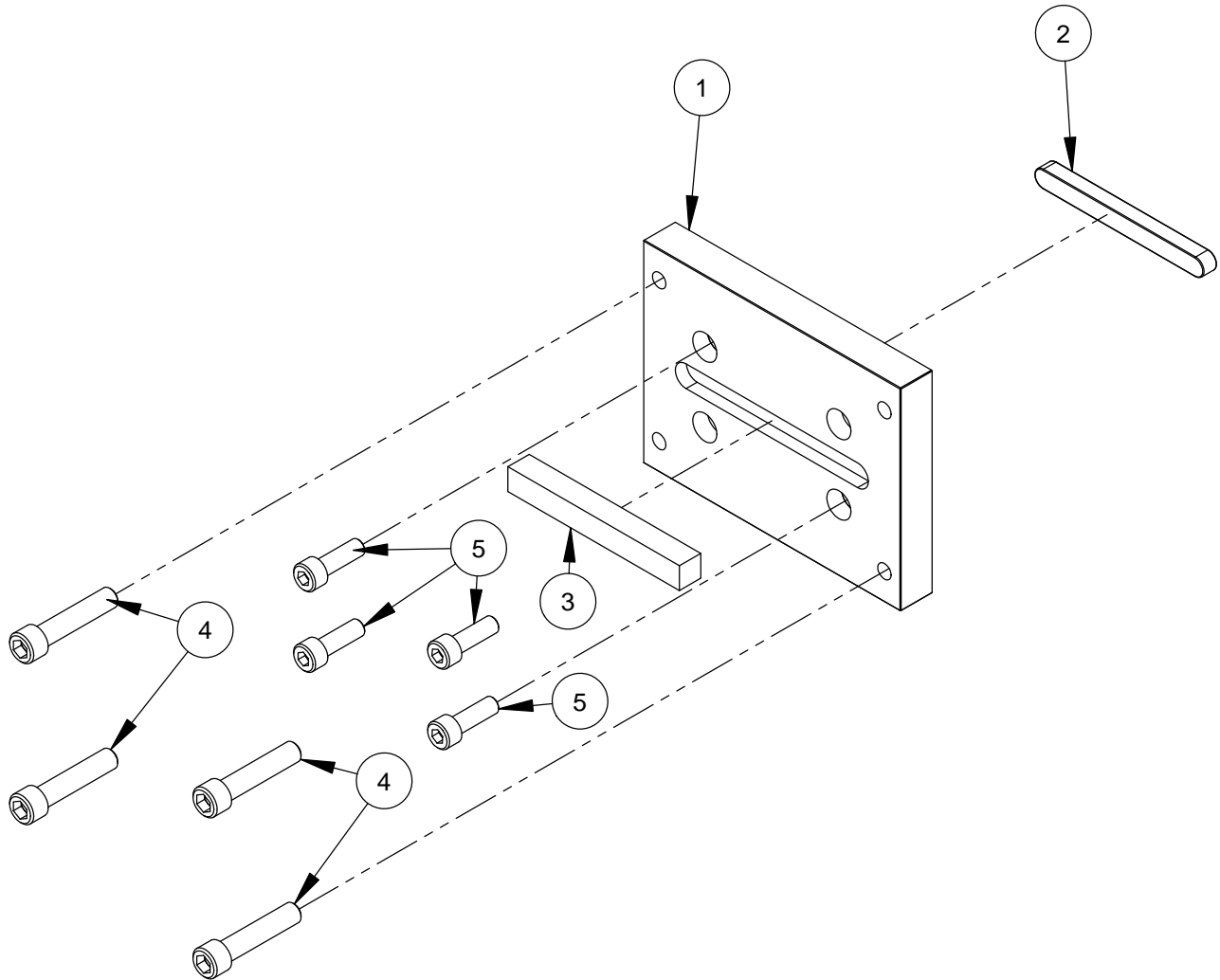
**M-2 Carriage Assembly with Motor Mount**  
**CB700 and Weka Motors**  
**#4640129**



**M-2 Carriage Assembly with Motor Mount**  
**CB700 and Weka Motors**  
**#4640129**

| ITEM | PART NO. | QTY. | DESCRIPTION                              |
|------|----------|------|--|
| 1    | 4641017  | 1    | Carriage Housing                         |
| 2    | 4641013  | 1    | Carriage Plate                           |
| 3    | 4641018  | 1    | Non-Adjusting Shim                       |
| 4    | 4641020  | 2    | Adjusting Shim - 2 1/2" W                |
| 5    | 4641012  | 2    | Adjusting Shim - 5/8" W                  |
| 6    | 2900078  | 1    | "L"-Bolt, 1/2-13                         |
| 7    | 2900102  | 8    | Cap Screw, Flat Hd., 1/4-20 x 1/2" Brass |
| 8    | 2900074  | 4    | Cap Screw, Flat Hd., 1/4-20 x 5/8" Brass |
| 9    | 2900075  | 4    | Cap Screw, Flat Hd., 1/4-20 x 1" Brass   |
| 10   | 2900056  | 1    | Set Screw, Soc. Hd., 1/4-20 x 1/4"       |
| 11   | 2900101  | 5    | Set Screw, Soc. Hd., 1/4-20 x 3/8"       |
| 12   | 2900077  | 4    | Set Screw, Soc. Hd., 1/4-20 x 7/8"       |
| 13   | 2900103  | 8    | Cap Screw, Soc. Hd., 5/16-18 x 1"        |
| 14   | 4641022  | 1    | Pinion Gear                              |
| 15   | 2400005  | 1    | Bearing - 5/8" X 7/8" x 3/4"             |
| 16   | 4645026  | 1    | Bushing, 1" x 1-1/4" x 7/8"              |
| 17   | 4641015  | 1    | Spoke Handle Assembly                    |
| 18   | 4648033  | 1    | Motor Mount Assembly                     |

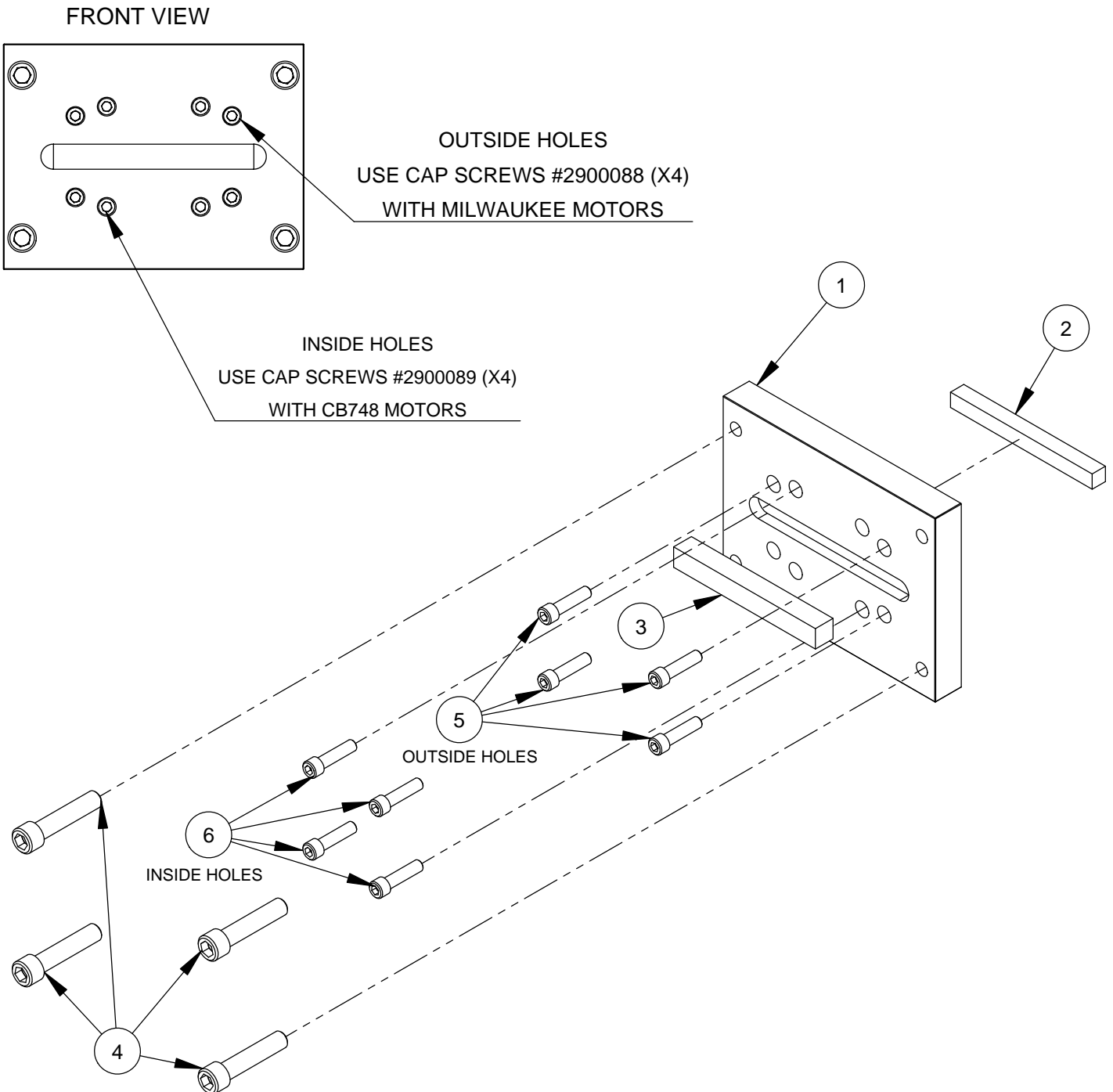
**CB700 and Weka Motor Mount Assembly**  
**#4648033**



| ITEM | PART NO. | QTY. | DESCRIPTION                          |
|------|----------|------|--------------------------------------|
| 1    | 4648034  | 1    | Motor Mount Plate                    |
| 2    | 2900263  | 1    | Parallel Key, 10mm x 8mm x 100mm     |
| 3    | 4641010  | 1    | Key, 1/2" Sq. x 4" Long              |
| 4    | 2900124  | 4    | Cap Screw, Soc. Hd., 3/8-16 x 1-3/4" |
| 5    | 2900161  | 4    | Cap Screw, Soc. Hd., M8-1.25 x 25mm  |

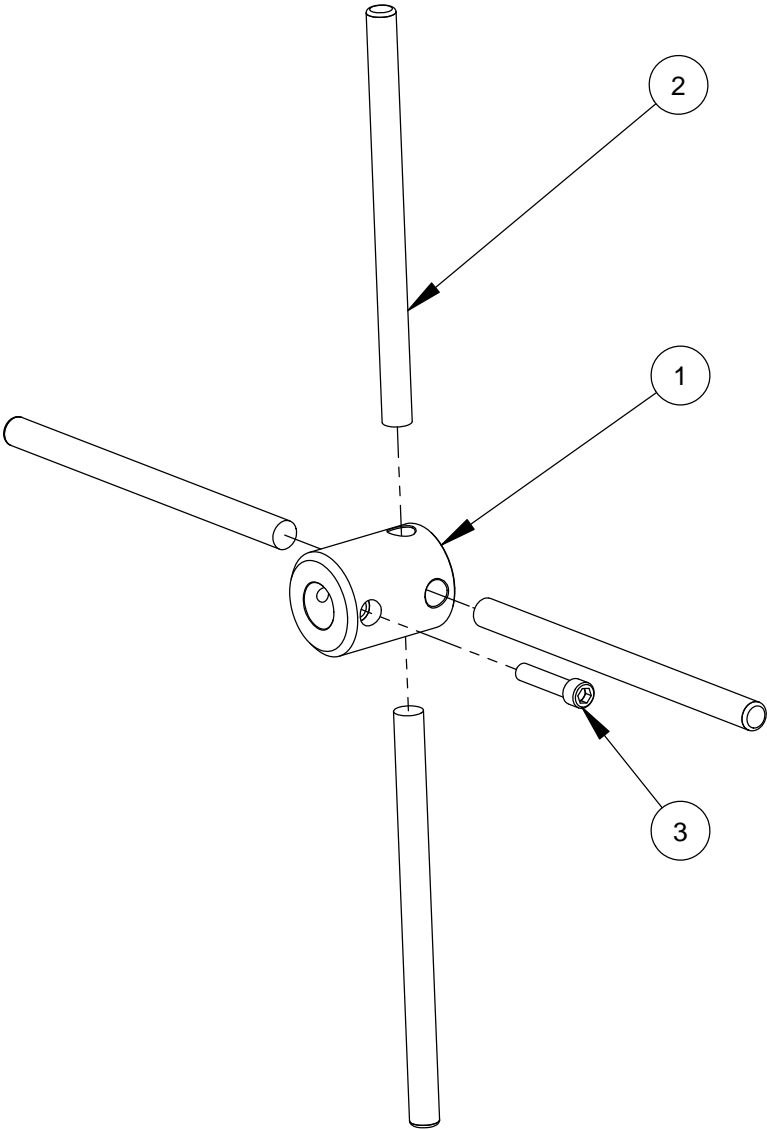


# **M-2 Motor Mount Assembly #4641009** **USE WITH CB748 AND MILWAUKEE MOTORS**



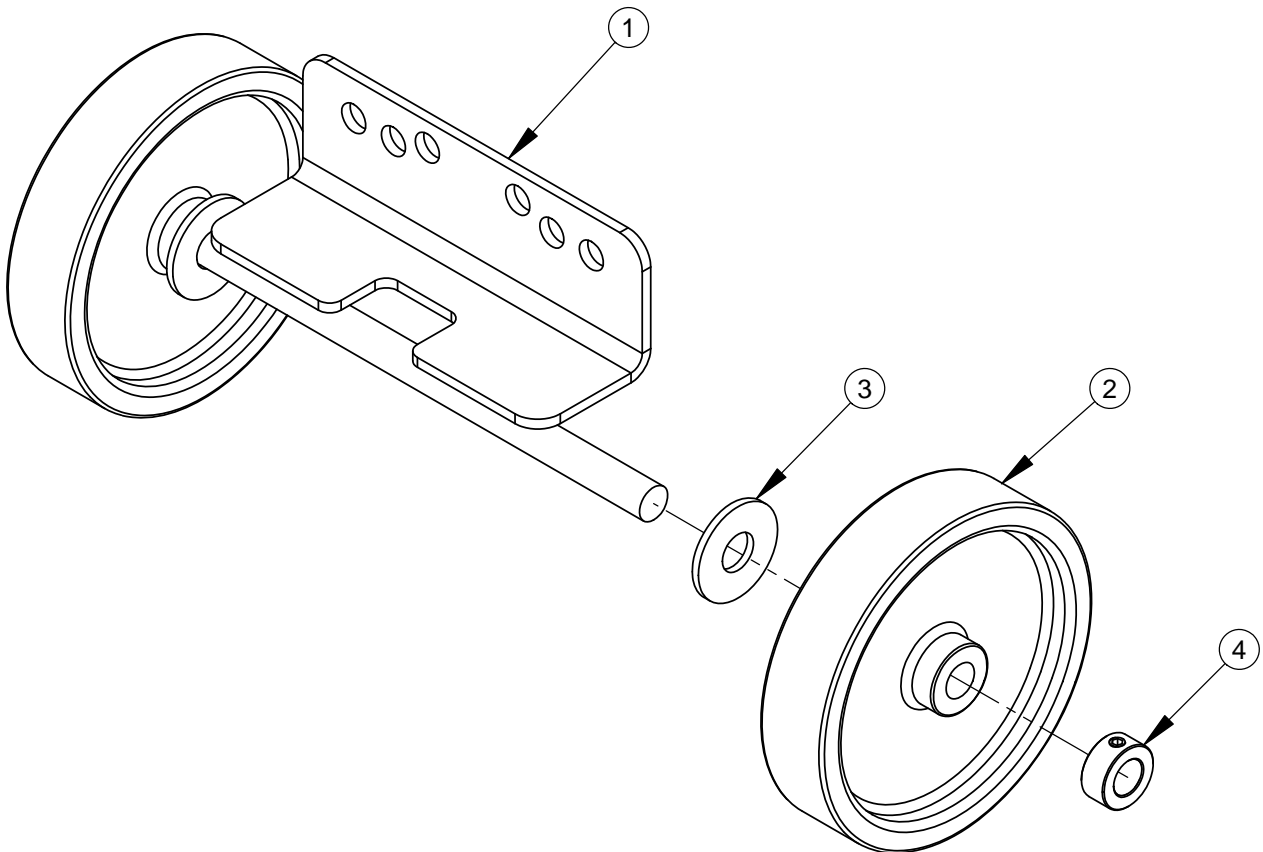
| ITEM | PART NO. | QTY. | DESCRIPTION                          |
|------|----------|------|--------------------------------------|
| 1    | 4641042  | 1    | M-2 Motor Mount Plate                |
| 2    | 4645006  | 1    | Key, 3/8" Sq. x 4"                   |
| 3    | 4641010  | 1    | Key, 1/2" Sq. x 4" Long              |
| 4    | 2900124  | 4    | Cap Screw, Soc. Hd., 3/8-16 x 1-3/4" |
| 5    | 2900088  | 4    | Cap Screw, Soc. Hd., 1/4-20 x 1"     |
| 6    | 2900089  | 4    | Cap Screw, Soc. Hd., 1/4-28 x 1"     |

**Spoke Handle Assembly #4641015**



| ITEM | PART NO. | QTY. | DESCRIPTION                          |
|------|----------|------|--------------------------------------|
| 1    | 4641019  | 1    | Handle Housing                       |
| 2    | 4641016  | 4    | Handle, Spoke, M-2                   |
| 3    | 2900124  | 1    | Cap Screw, Soc. Hd., 3/8-16 x 1-3/4" |

## **Axle Assembly #4645046**



| ITEM | PART NO. | QTY. | DESCRIPTION                     |
|------|----------|------|---------------------------------|
| 1    | 4646077  | 1    | Wheel Mount Bracket Assembly    |
| 2    | 2400004  | 2    | Wheel, 6"                       |
| 3    | 2900128  | 2    | Flat Washer, 5/8" USS           |
| 4    | 2500008  | 2    | Set Collar, 5/8" with Set Screw |

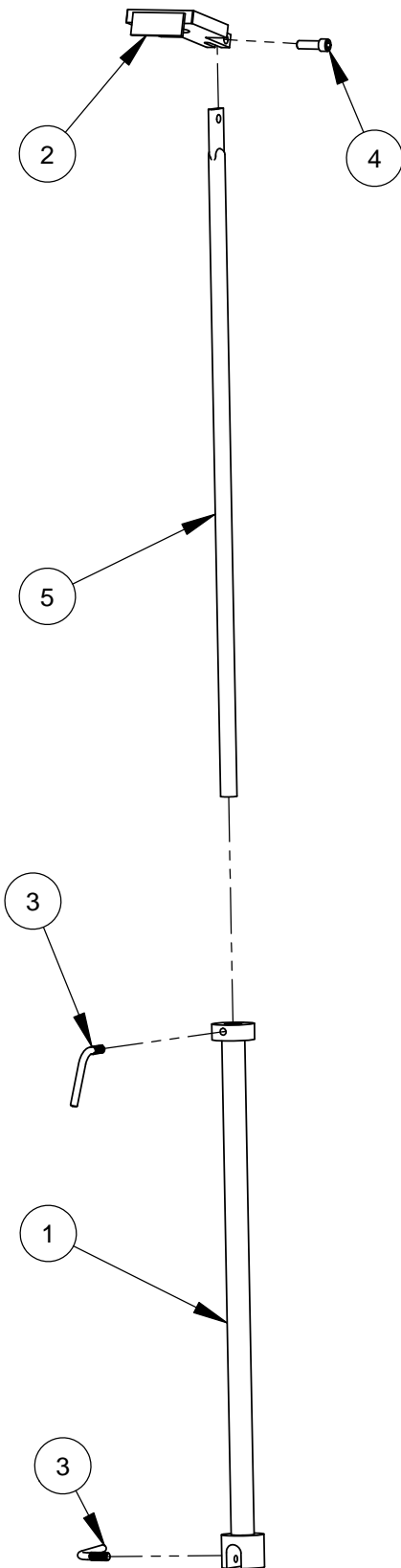
## **M-2 Angle Brace Assembly**

**42" Mast #4641077**

**48" Mast #4641169**

**60" Mast #4641170**

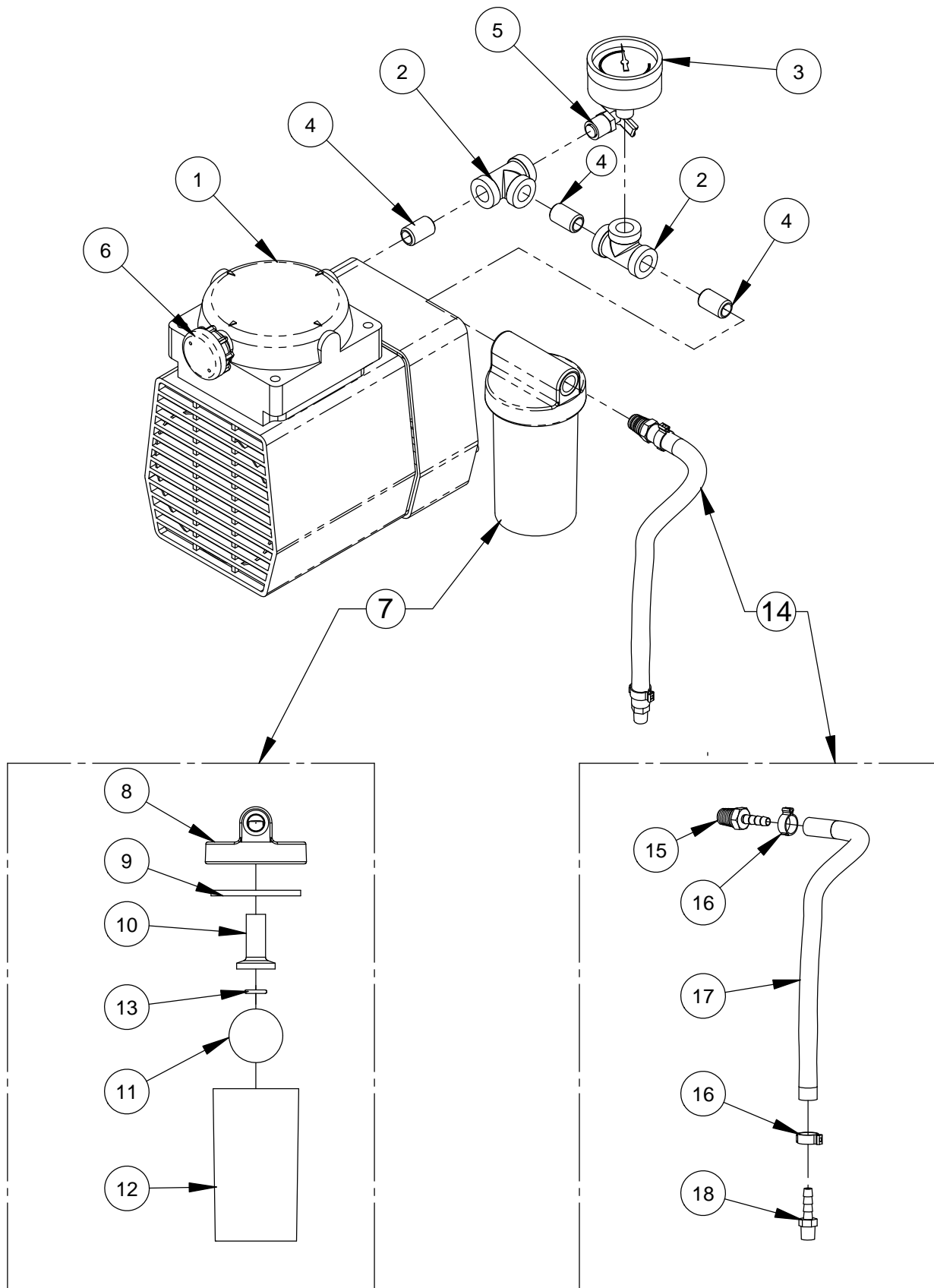
**72" Mast #4641171**



| ITEM | PART NO. | QTY. | DESCRIPTION                       |
|------|----------|------|-----------------------------------|
| 1    | 4645105  | 1    | Lower Brace                       |
| 2    | 4641069  | 1    | Angle Mast Bracket                |
| 3    | 2900095  | 2    | L-Bolt, 5/16-18                   |
| 4    | 2900103  | 1    | Cap Screw, Soc. Hd., 5/16-18 x 1" |
| 5    | 4645061  | 1    | Upper Brace - for 42" Mast        |
|      | 4645060  | 1    | Upper Brace - for 48" Mast        |
|      | 4645059  | 1    | Upper Brace - for 60" Mast        |
|      | 4645058  | 1    | Upper Brace - for 72" Mast        |

Intentionally Blank

## **Vacuum Pump Assembly 115V #4244075**



## **Vacuum Pump Assembly 115V #4244075**

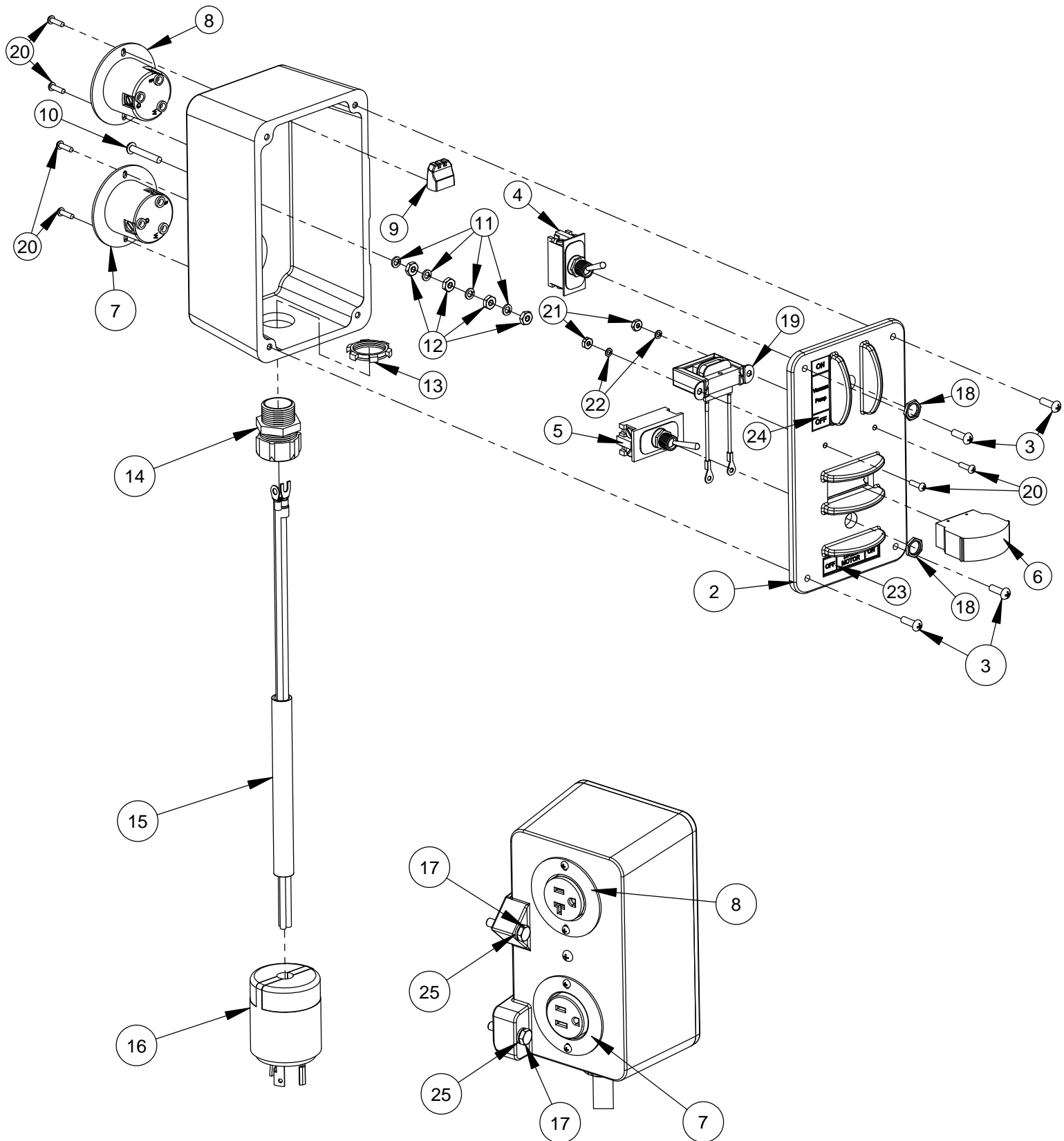
| ITEM | PART NO. | QTY. | DESCRIPTION                          |
|------|----------|------|--------------------------------------|
| 1    | 2600016  | 1    | Vacuum Pump, 115 Volt with Water Jar |
| 2    | 3200010  | 2    | Pipe Tee, 1/4" FPT                   |
| 3    | 2700164  | 1    | Gauge, Vacuum                        |
| 4    | 3200007  | 3    | Close Nipple, 1/4 NPT                |
| 5    | 3200035  | 1    | Petcock, 1/4" NPT                    |
| 6    | 2700168  | 1    | Muffler                              |
| 7    | 2700171  | 1    | Water Jar Assembly                   |

| ITEM | PART NO. | QTY. | DESCRIPTION      |
|------|----------|------|------------------|
| 8    | 2700014  | 1    | Water Jar Lid    |
| 9    | 2700017  | 1    | Water Jar Gasket |
| 10   | 2700015  | 1    | Funnel Fitting   |
| 11   | 2700172  | 1    | Float Ball       |
| 12   | 2700170  | 1    | Water Trap Jar   |
| 13   | 2700016  | 1    | O-Ring           |

| ITEM | PART NO. | QTY. | DESCRIPTION   |
|------|----------|------|---------------|
| 14   | 4699490  | 1    | Hose Assembly |

| ITEM | PART NO. | QTY. | DESCRIPTION                             |
|------|----------|------|---|
| 15   | 3200019  | 1    | Fitting, 1/4" M. Pipe to 1/4" Hose Barb |
| 16   | 3200017  | 2    | Clamp, Pinch On                         |
| 17   | 4699430  | 1    | Air Hose                                |
| 18   | 3200018  | 1    | Fitting, 1/8" M. Pipe to 1/4" Hose Barb |

# Dual Switch/Dual Outlet Control Panel 115V #4243000



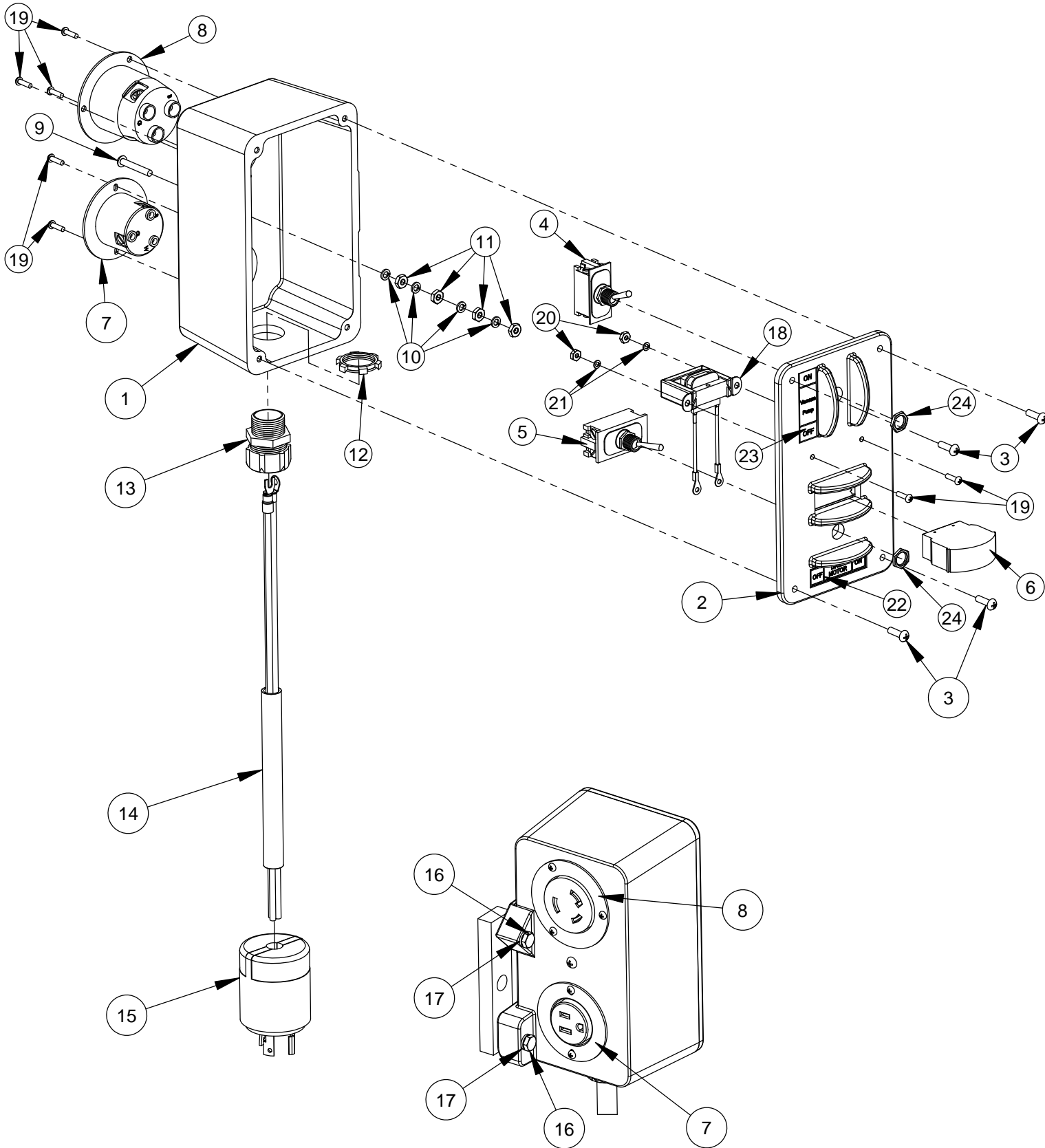
Back View of Control Panel



## **Dual Switch/Dual Outlet Control Panel 115V #4243000**

| ITEM | PART NO. | QTY. | DESCRIPTION                              |
|------|----------|------|--|
| 1    | 4699440  | 1    | Control Box Body                         |
| 2    | 4699460  | 1    | Cover Plate                              |
| 3    | 2900159  | 4    | Machine Screw, Rd. Hd., #10-24 x 5/8"    |
| 4    | 2800016  | 1    | Toggle Switch 16Amp/125V                 |
| 5    | 2800017  | 1    | Toggle Switch 20Amp/125V                 |
| 6    | 2800020  | 1    | Amp Meter 115V, 0-25 Amp                 |
| 7    | 2800018  | 1    | Flanged Outlet, 15 Amp, 125 Volt         |
| 8    | 2800896  | 1    | Flanged Outlet, 15 Amp, 125 Volt         |
| 9    | 2801800  | 1    | Connector, Push-In 3 Port, 14-10 Ga Wire |
| 10   | 2900172  | 1    | Machine Screw, Rd. Hd., #10-24 x 1-1/4"  |
| 11   | 2900038  | 4    | Lock Washer, #10 Split                   |
| 12   | 2900050  | 4    | Hex Nut, #10-24                          |
| 13   | 2800050  | 1    | Lock Nut, 3/4" Sealing                   |
| 14   | 2800043  | 1    | Connector, 3/4" Cord                     |
| 15   | 4699500  | 1    | Line Cord for 115 Volt -14"              |
| 16   | 2800023  | 1    | Plug, 125V, 30A, Twist Lock              |
| 17   | 2900052  | 2    | Cap Screw, Hex Hd., 1/4-20 x 1-1/4"      |
| 18   | 2900204  | 2    | Nut, Toggle Switch, 15/32"-32            |
| 19   | 2800085  | 1    | AC Current Transformer                   |
| 20   | 2900090  | 6    | Machine Screw, Rd. Hd., #6-32 x 1/2"     |
| 21   | 2900091  | 2    | Hex Nut, #6-32                           |
| 22   | 2900092  | 2    | Lock Washer, #6 Split                    |
| 23   | 1800253  | 1    | ON/OFF Drill Motor Label                 |
| 24   | 1800254  | 1    | ON/OFF Vacuum Pump Label                 |
| 25   | 2900024  | 2    | Lock Washer, 1/4" Split                  |

## **Dual Switch/Dual Outlet Control Panel 115V #4277594** **for Weka Motor**

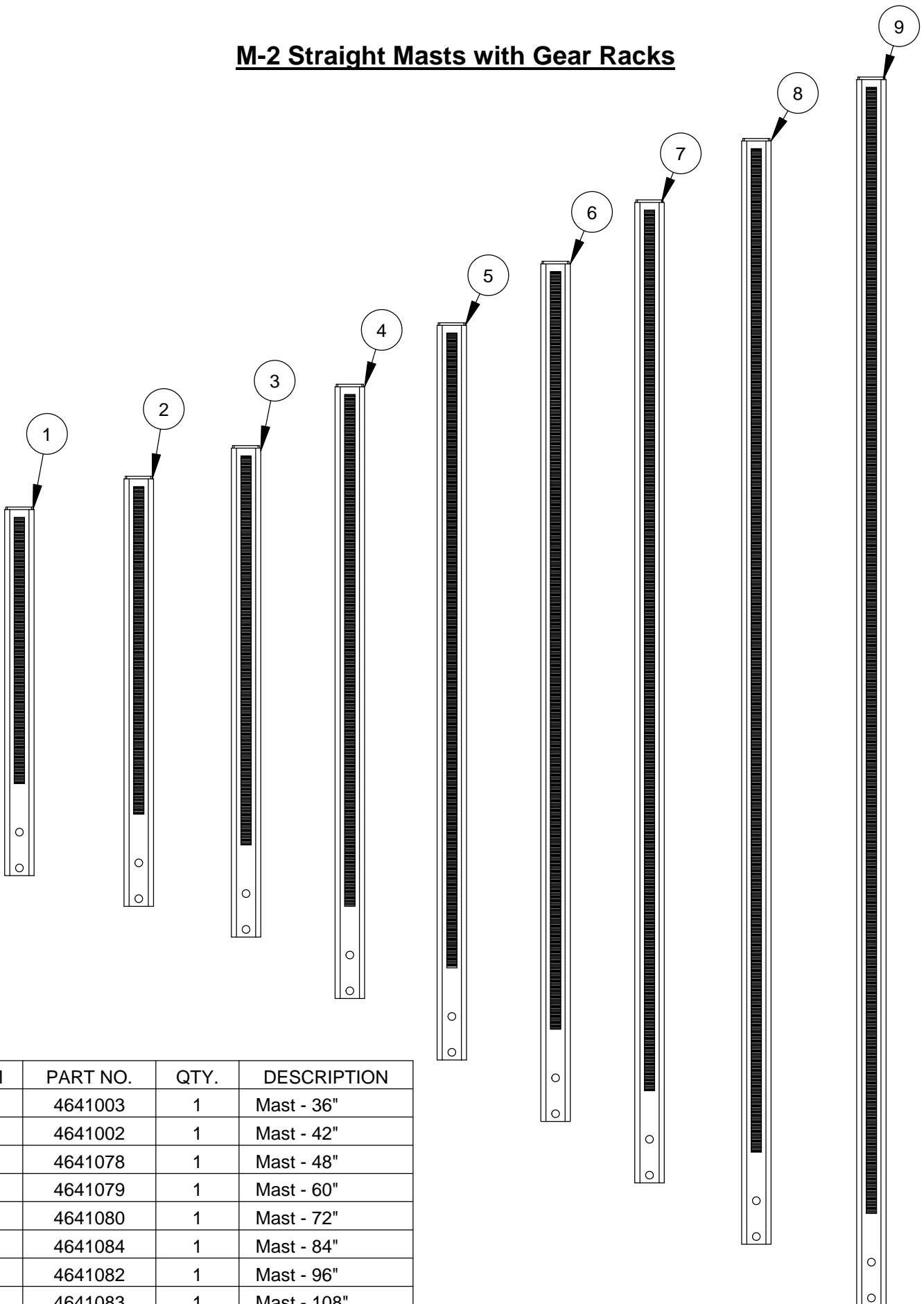


### Back View of Control Panel

**Dual Switch/Dual Outlet Control Panel 115V #4277594**  
**for Weka Motor**

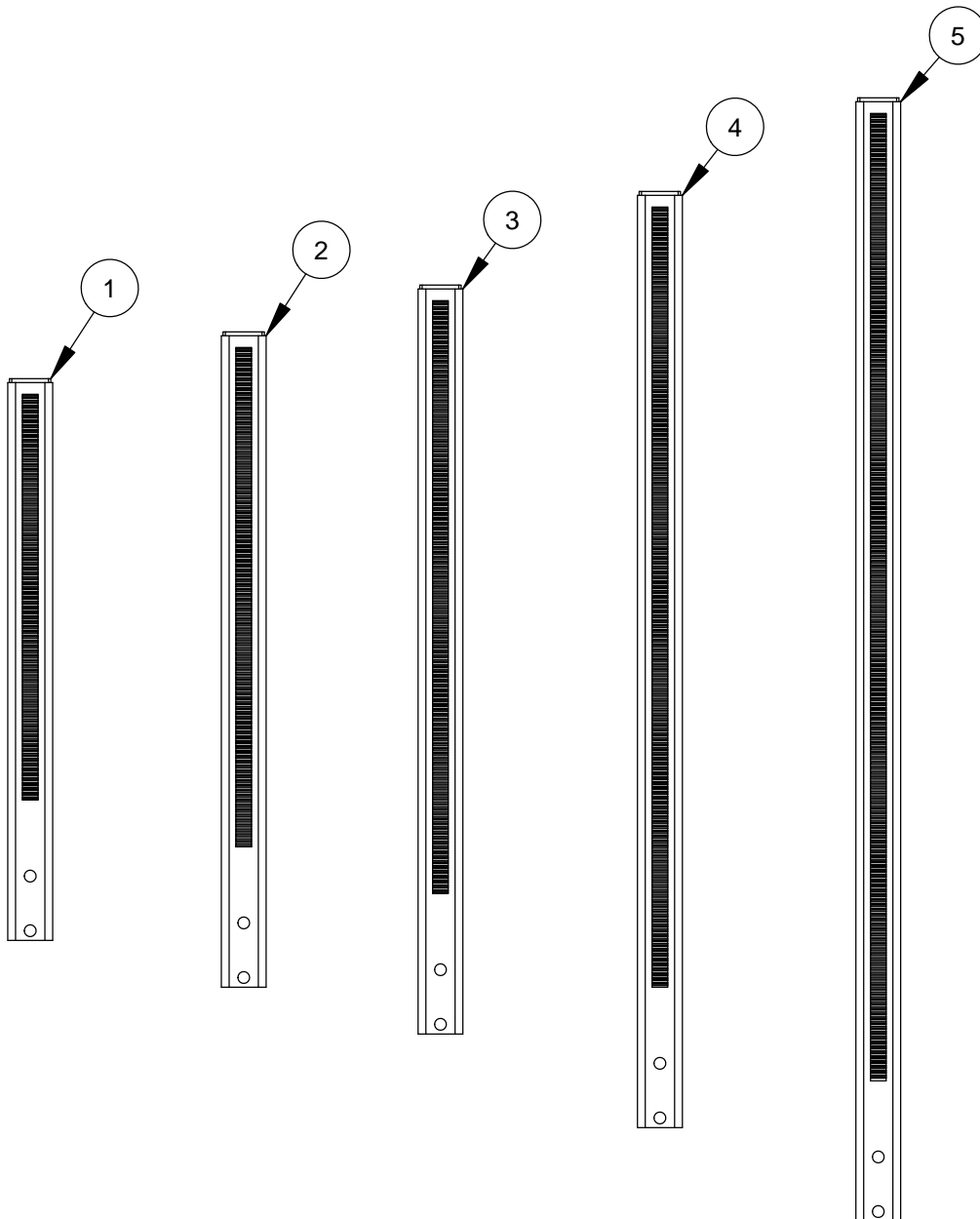
| ITEM | PART NO. | QTY. | DESCRIPTION                             |
|------|----------|------|---|
| 1    | 4699957  | 1    | Control Box                             |
| 2    | 4699460  | 1    | Cover Plate                             |
| 3    | 2900159  | 4    | Machine Screw, Rd. Hd., #10-24 x 5/8"   |
| 4    | 2800016  | 1    | Toggle Switch 16Amp/125V                |
| 5    | 2800017  | 1    | Toggle Switch 20Amp/125V                |
| 6    | 2800558  | 1    | Amp Meter 115V, 0-30 Amp                |
| 7    | 2800018  | 1    | Flanged Outlet, 15 Amp, 125 Volt        |
| 8    | 2800039  | 1    | Flanged Outlet, 30 Amp, 125 Volt        |
| 9    | 2900172  | 1    | Machine Screw, Rd. Hd., #10-24 x 1-1/4" |
| 10   | 2900038  | 4    | Lock Washer, #10 Split                  |
| 11   | 2900050  | 4    | Hex Nut, #10-24                         |
| 12   | 2800050  | 1    | Lock Nut, 3/4" Sealing                  |
| 13   | 2800171  | 1    | Connector, 3/4" Cord                    |
| 14   | 4699506  | 1    | Line Cord for 115 Volt - 14"            |
| 15   | 2800023  | 1    | Plug, 125V, 30A, Twist Lock             |
| 16   | 2900052  | 2    | Cap Screw, Hex Hd., 1/4-20 x 1-1/4"     |
| 17   | 2900024  | 2    | Lock Washer, 1/4" Split                 |
| 18   | 2800085  | 1    | AC Current Transformer                  |
| 19   | 2900090  | 7    | Machine Screw, Rd. Hd., #6-32 x 1/2"    |
| 20   | 2900091  | 2    | Hex Nut, #6-32                          |
| 21   | 2900092  | 2    | Lock Washer, #6 Split                   |
| 22   | 1800253  | 1    | ON/OFF Drill Motor Label                |
| 23   | 1800254  | 1    | ON/OFF Vacuum Pump Label                |
| 24   | 2900204  | 2    | Nut, Toggle Switch, 15/32"-32           |
| 25   | 4699958  | 1    | Control Box Bracket                     |

## M-2 Straight Masts with Gear Racks



| ITEM | PART NO. | QTY. | DESCRIPTION |
|------|----------|------|-------------|
| 1    | 4641003  | 1    | Mast - 36"  |
| 2    | 4641002  | 1    | Mast - 42"  |
| 3    | 4641078  | 1    | Mast - 48"  |
| 4    | 4641079  | 1    | Mast - 60"  |
| 5    | 4641080  | 1    | Mast - 72"  |
| 6    | 4641084  | 1    | Mast - 84"  |
| 7    | 4641082  | 1    | Mast - 96"  |
| 8    | 4641083  | 1    | Mast - 108" |
| 9    | 4644120  | 1    | Mast - 120" |

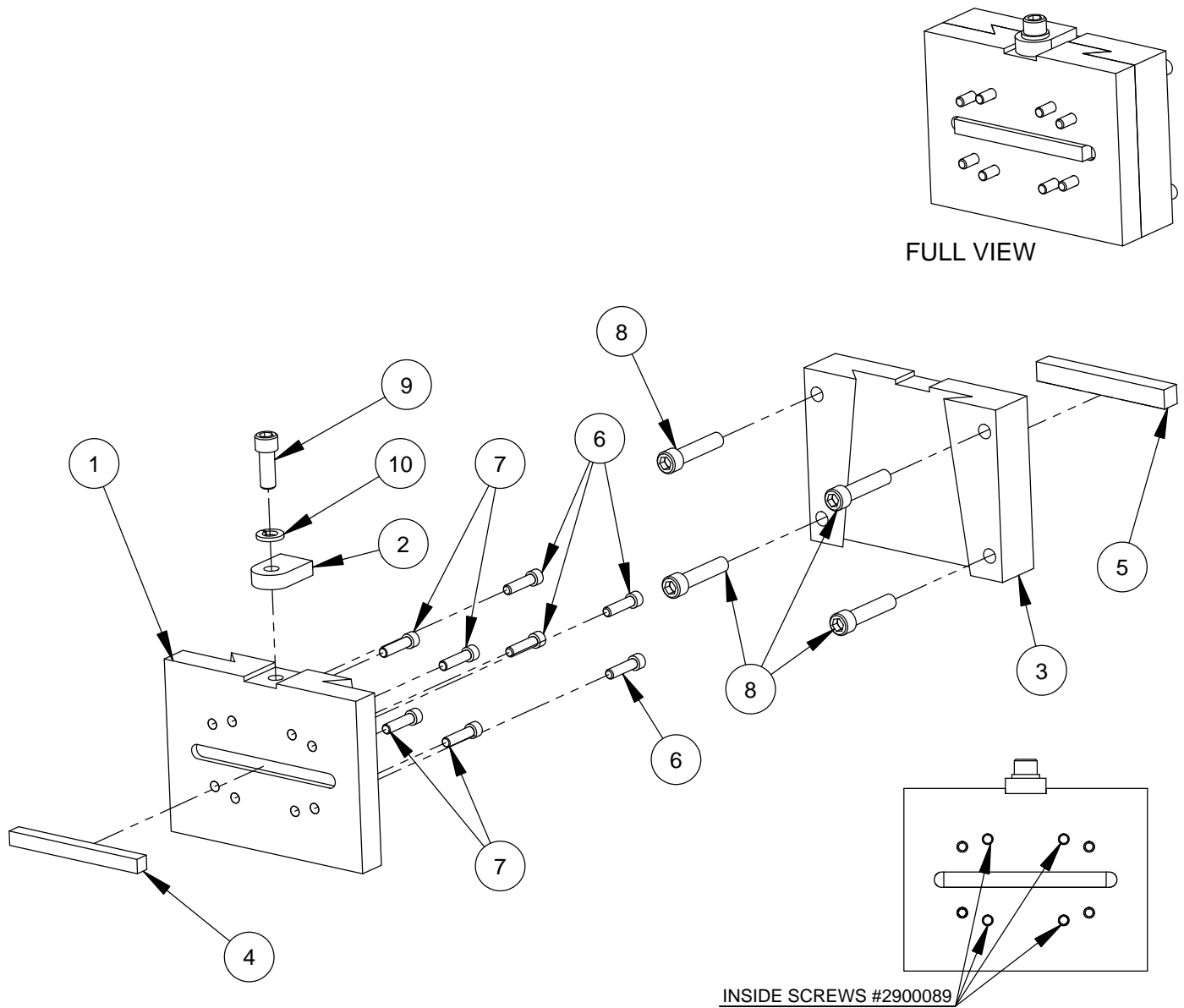
## M-2 Angle Masts with Gear Racks



| ITEM | PART NO. | QTY. | DESCRIPTION      |
|------|----------|------|------------------|
| 1    | 4641089  | 1    | Angle Mast - 36" |
| 1    | 4641068  | 1    | Angle Mast - 42" |
| 3    | 4641091  | 1    | Angle Mast - 48" |
| 4    | 4641086  | 1    | Angle Mast - 60" |
| 5    | 4641087  | 1    | Angle Mast - 72" |

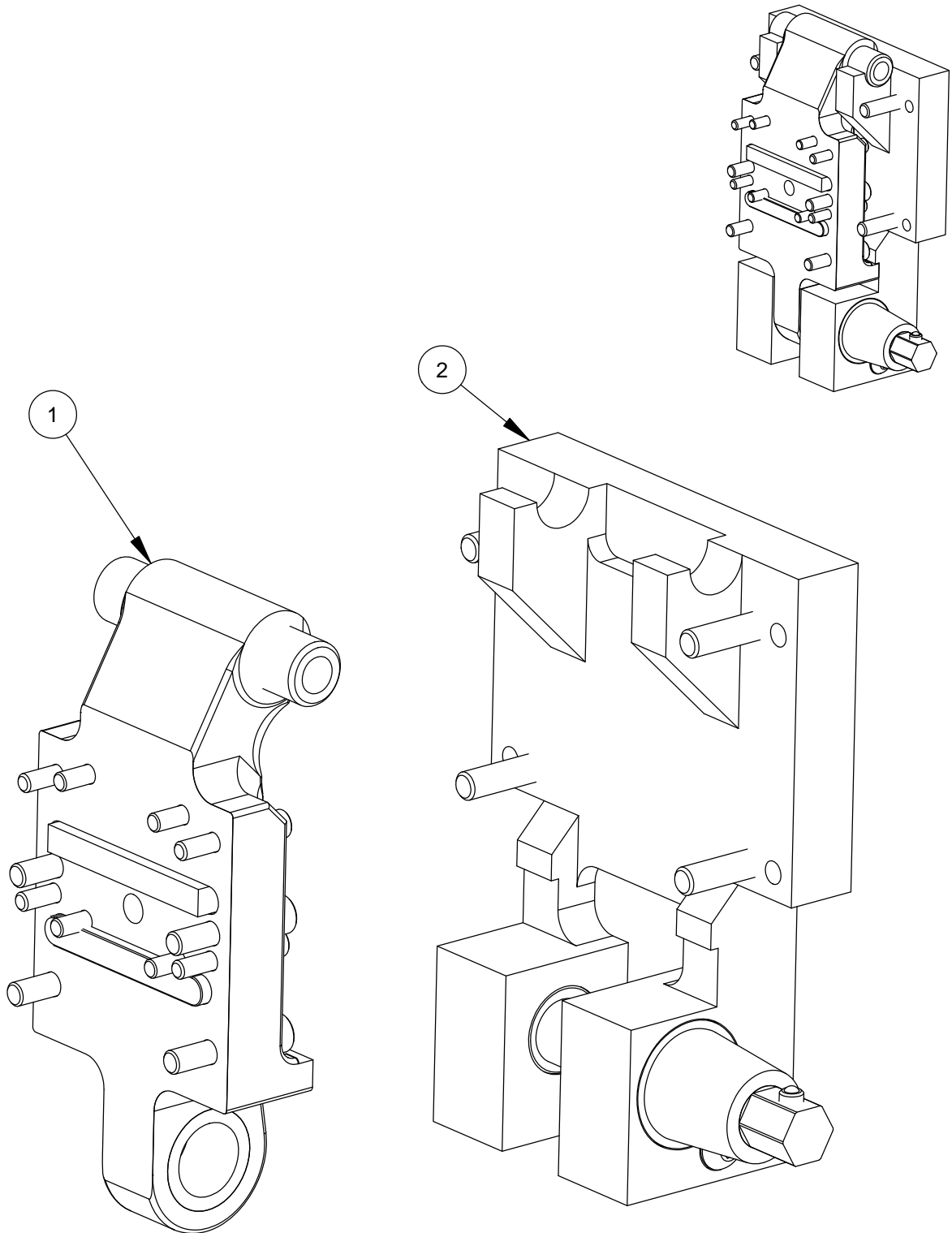
# **Accessories**

## Dovetail Motor Mount Quick Disconnect #4648007



| ITEM | PART NO. | QTY. | DESCRIPTION                          |
|------|----------|------|--------------------------------------|
| 1    | 4648005  | 1    | Motor Mount Plate                    |
| 2    | 4648008  | 1    | Plate Lock                           |
| 3    | 4648006  | 1    | Q.D. Motor Mount Plate - Female      |
| 4    | 4645006  | 1    | Key, 3/8" Sq. x 4"                   |
| 5    | 4641010  | 1    | Key, 1/2" Sq. x 4" Long              |
| 6    | 2900088  | 4    | Cap Screw, Soc. Hd., 1/4-20 x 1"     |
| 7    | 2900089  | 4    | Cap Screw, Soc. Hd., 1/4-28 x 1"     |
| 8    | 2900124  | 4    | Cap Screw, Soc. Hd., 3/8-16 x 1-3/4" |
| 9    | 2900175  | 1    | Cap Screw, Soc. Hd., 3/8-16 x 1"     |
| 10   | 2900006  | 1    | Lock Washer, 3/8" Split              |

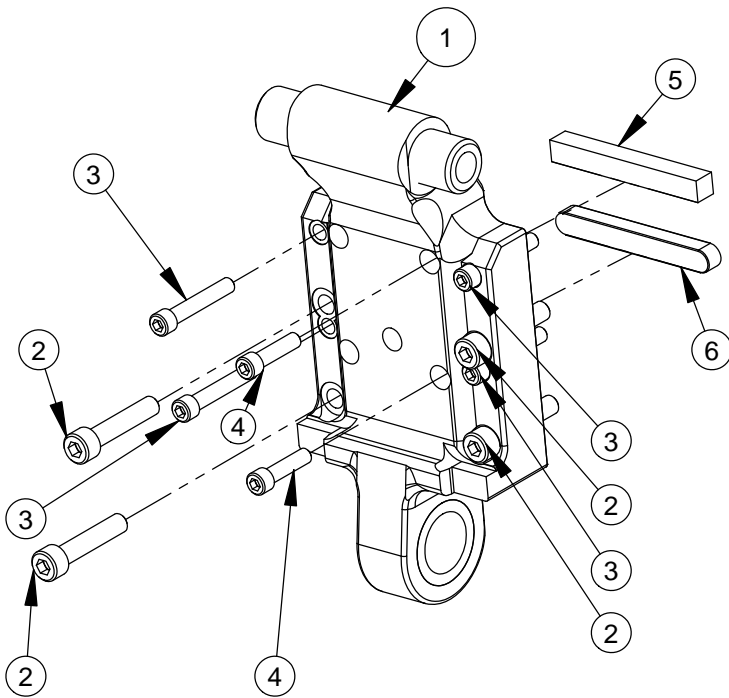
## **Quick Disconnect Assembly #4699961**



| ITEM | PART NO. | QTY. | DESCRIPTION                     |
|------|----------|------|---------------------------------|
| 1    | 4600130  | 1    | QD Motor Mount Assembly         |
| 2    | 4600148  | 1    | Quick Disconnect Plate Assembly |

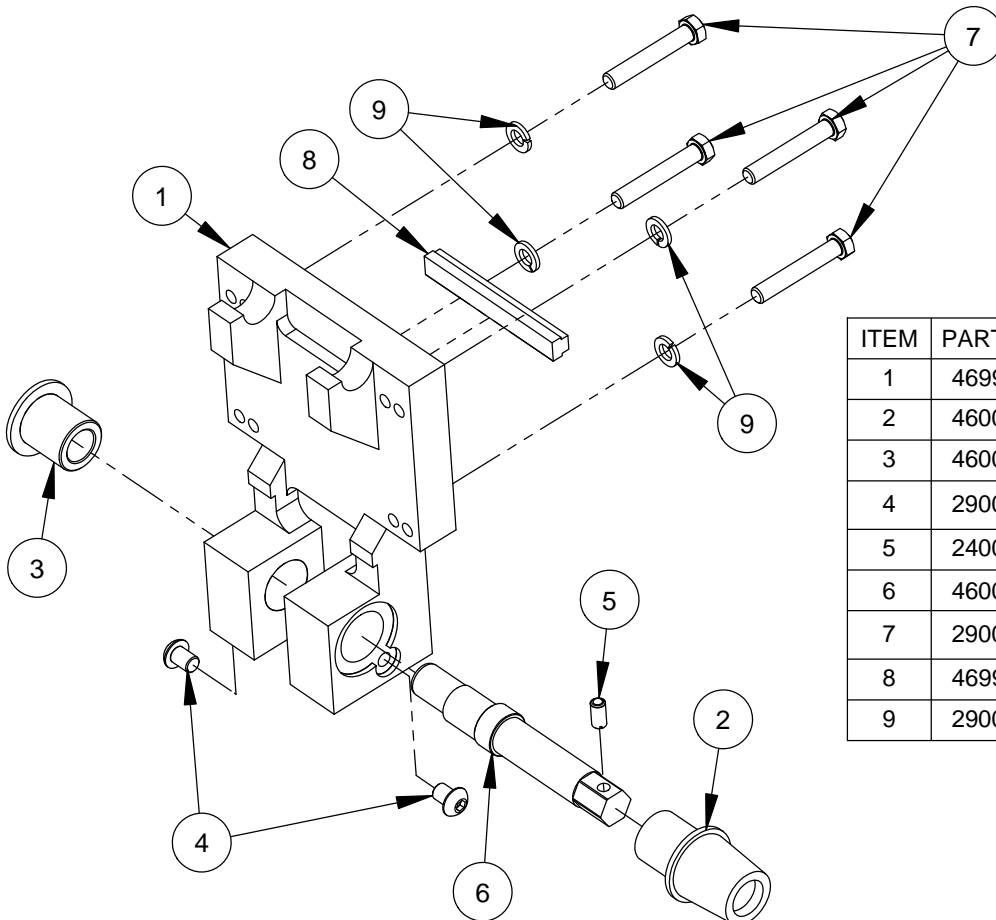


## **Quick Disconnect Motor Mount Assembly # 46000130**

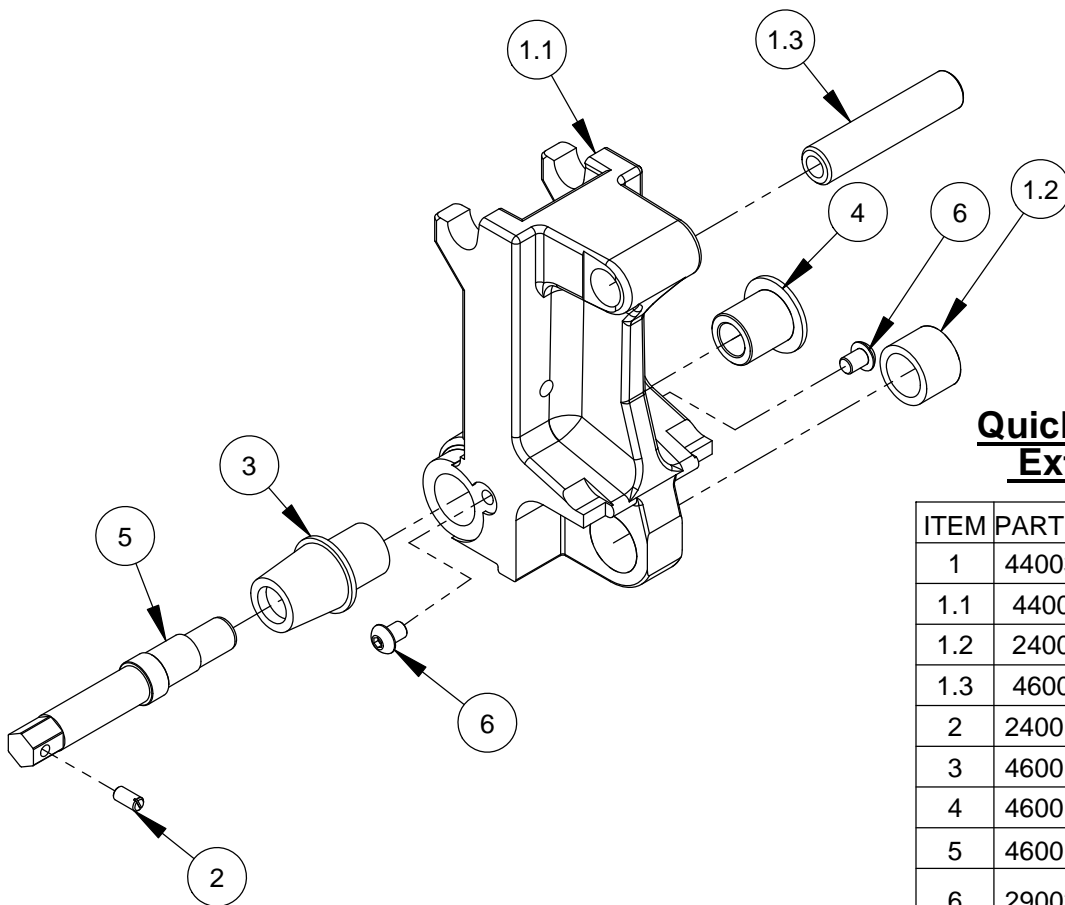


| ITEM | PART NO. | QTY. | DESCRIPTION                         |
|------|----------|------|-------------------------------------|
| 1    | 4600157  | 1    | QD Motor Mount Assembly             |
| 2    | 2900398  | 4    | Cap Screw, Soc. Hd., M8-1.25 x 40mm |
| 3    | 2900399  | 4    | Cap Srew, Soc Hd., 1/4-20 x 1-1/2"  |
| 4    | 2900089  | 4    | Cap Screw, Soc. Hd., 1/4-28 x 1"    |
| 5    | 4600131  | 1    | Key, 3/8" Sq. x 3"                  |
| 6    | 2900397  | 1    | Parallel Key, 10mm x 8mm x 80mm     |

## **Quick Disconnect Plate Assembly #4600148**

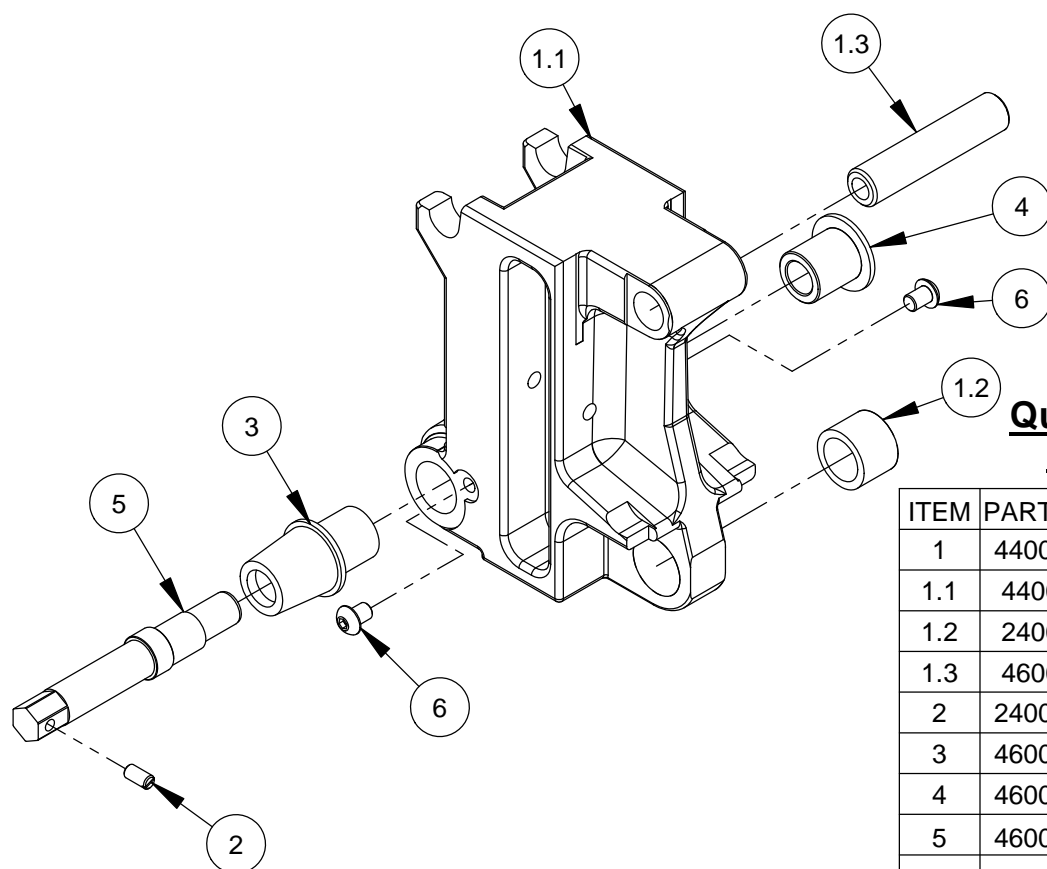


| ITEM | PART NO. | QTY. | DESCRIPTION                          |
|------|----------|------|--------------------------------------|
| 1    | 4699960  | 1    | M-1/M-2 QD Adapter Plate             |
| 2    | 4600109  | 1    | Cam Shaft Housing                    |
| 3    | 4600110  | 1    | Cam Shaft Bushing                    |
| 4    | 2900285  | 2    | Cap Screw, Button Hd., 3/8-24 x 1/2" |
| 5    | 2400143  | 1    | Ball Plunger M8                      |
| 6    | 4600108  | 1    | Cam Lock Shaft                       |
| 7    | 2900079  | 4    | Cap Screw, Hex Hd., 3/8-16 x 2-1/4"  |
| 8    | 4699922  | 1    | Step Key, 3/8" to 1/2" x 4"          |
| 9    | 2900006  | 4    | Lock Washer, 3/8" Split              |



### **Quick Disconnect Outrigger Extension 7" #4400312**

| ITEM | PART NO. | QTY. | DESCRIPTION                          |
|------|----------|------|--------------------------------------|
| 1    | 4400314  | 1    | M-5 QD Outrigger 7"                  |
| 1.1  | 4400518  | 1    | M-5 Outrigger-7" Extension           |
| 1.2  | 2400144  | 1    | Bronze Bearing, 1-3/8" x 1"          |
| 1.3  | 4600111  | 1    | Support Tube                         |
| 2    | 2400143  | 1    | Ball Plunger M8                      |
| 3    | 4600109  | 1    | Cam Shaft Housing                    |
| 4    | 4600110  | 1    | Cam Shaft Bushing                    |
| 5    | 4600108  | 1    | Cam Lock Shaft                       |
| 6    | 2900285  | 2    | Cap Screw, Button Hd., 3/8-24 x 1/2" |



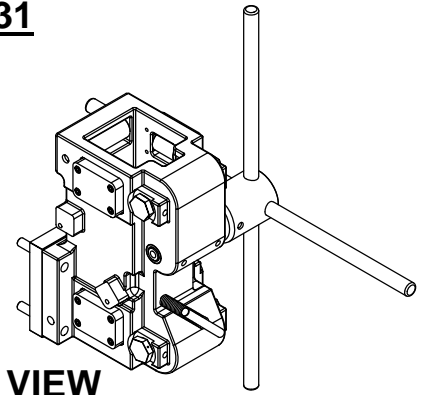
### **Quick Disconnect Outrigger Extension 10" #4400313**

| ITEM | PART NO. | QTY. | DESCRIPTION                          |
|------|----------|------|--------------------------------------|
| 1    | 4400316  | 1    | M-5 QD Outrigger 10"                 |
| 1.1  | 4400519  | 1    | M-5 Outrigger 10" Extension          |
| 1.2  | 2400144  | 1    | Bronze Bearing, 1-3/8" x 1"          |
| 1.3  | 4600111  | 1    | Support Tube                         |
| 2    | 2400143  | 1    | Ball Plunger M8                      |
| 3    | 4600109  | 1    | Cam Shaft Housing                    |
| 4    | 4600110  | 1    | Cam Shaft Bushing                    |
| 5    | 4600108  | 1    | Cam Lock Shaft                       |
| 6    | 2900285  | 2    | Cap Screw, Button Hd., 3/8-24 x 1/2" |

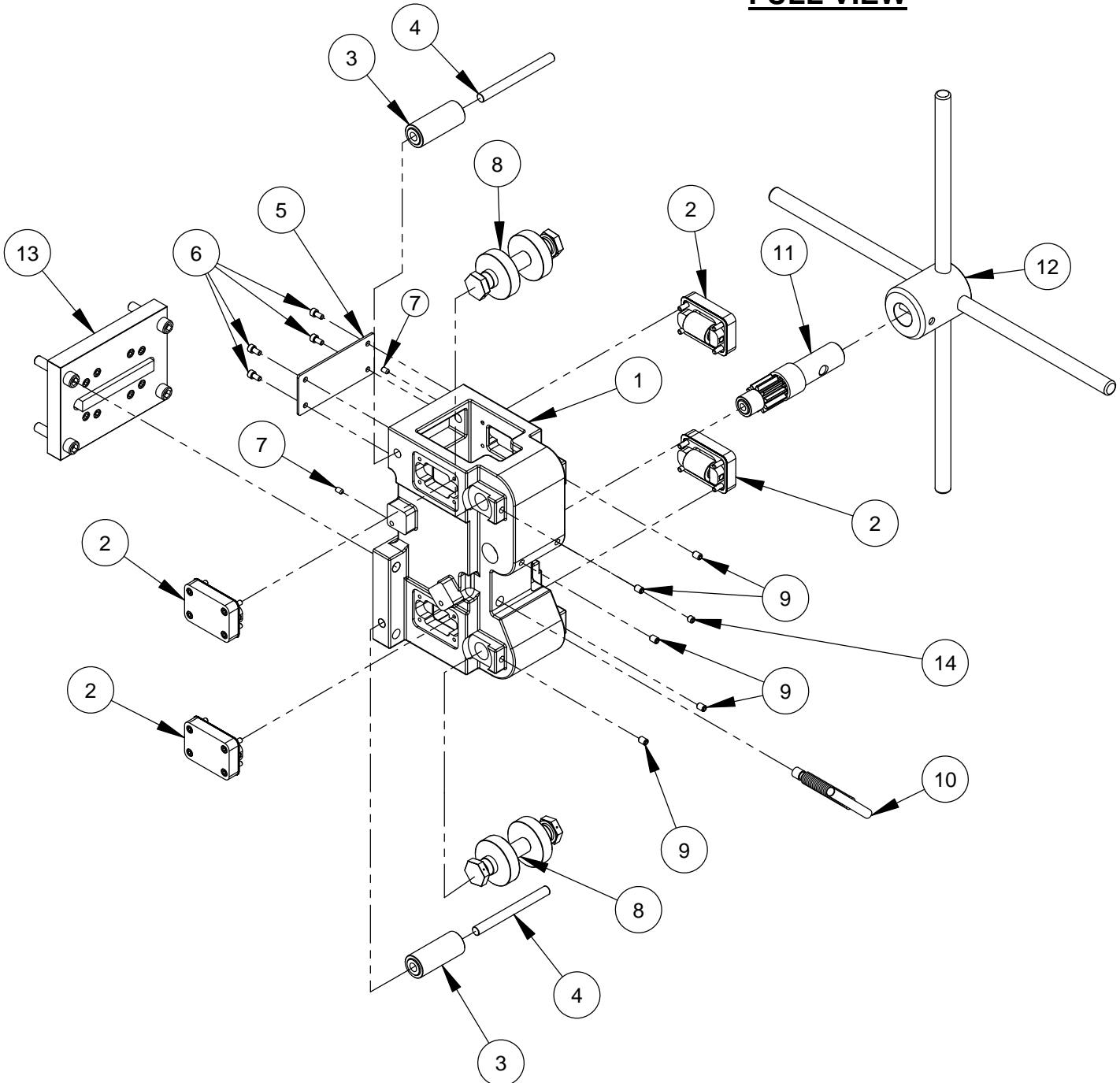
Both Extensions must be use with the Quick Disconnect Adaptor #4699961

Intentionally Blank

## M-2 Roller Carriage Assembly #4277531



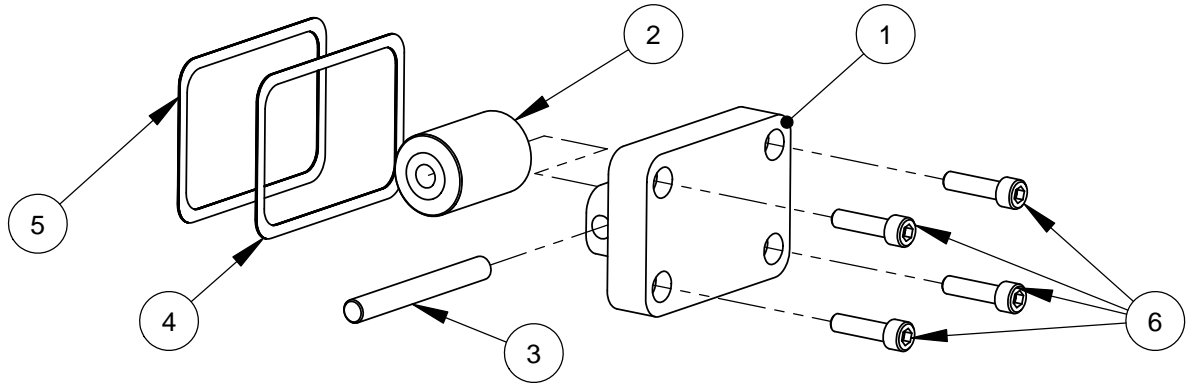
FULL VIEW



## **M-2 Roller Carriage Assembly #4277531**

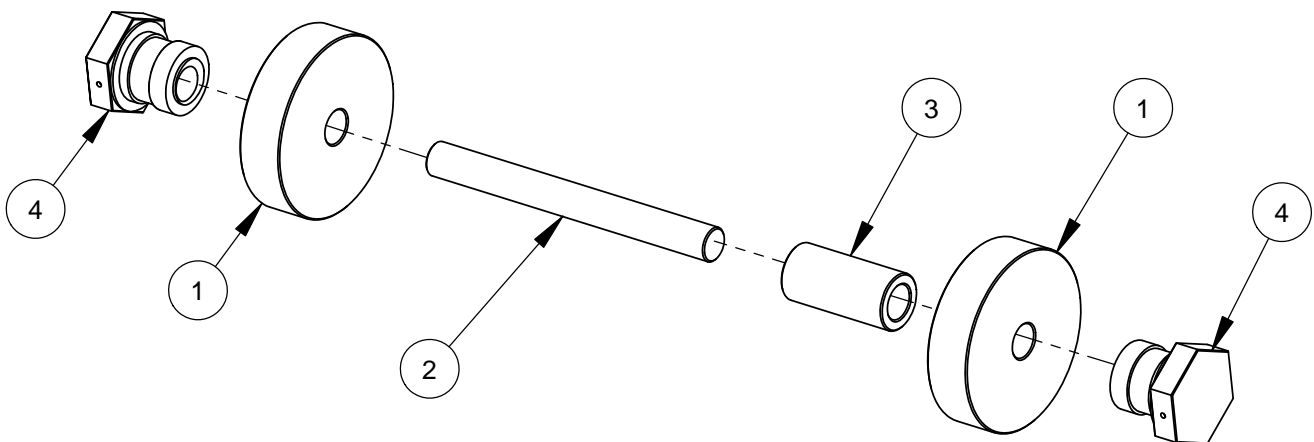
| ITEM | PART NO. | QTY. | DESCRIPTION                                |
|------|----------|------|--|
| 1    | 4647100  | 1    | Roller Carriage                            |
| 2    | 4647107  | 4    | Side Roller Assembly (Plastic 7/8" Roller) |
| 3    | 4647114  | 2    | Lower Roller (plastic)                     |
| 4    | 4647112  | 2    | Lower Roller Shaft                         |
| 5    | 2400009  | 1    | Aluminum Cover Plate                       |
| 6    | 2900117  | 4    | Cap Screw, Soc. Hd., #10-24 x 3/8"         |
| 7    | 2900118  | 2    | Soc Set Screw, #10-24 x 5/16"              |
| 8    | 4647108  | 2    | Adjustable Roller Assembly                 |
| 9    | 2900101  | 5    | Set Screw, Soc. Hd., 1/4-20 x 3/8"         |
| 10   | 4647123  | 1    | Carriage Lock (M-2 Roller Carriage)        |
| 11   | 4647124  | 1    | Pinion Gear W/Bushings                     |
| 12   | 4641015  | 1    | Spoke Handle Assembly                      |
| 13   | 4641009  | 1    | M-2 Motor Mount Assembly                   |
| 14   | 2900056  | 1    | Set Screw, Soc. Hd., 1/4-20 x 1/4"         |

## **Side Roller Assembly #4647107**



| ITEM | PART NO. | QTY. | DESCRIPTION                        |
|------|----------|------|------------------------------------|
| 1    | 4647102  | 1    | Side Roller Housing                |
| 2    | 4647113  | 1    | Side Roller, Plastic               |
| 3    | 4647106  | 1    | Side Roller Shaft                  |
| 4    | 2400011  | 5    | Aluminum Gasket Shim, .005"        |
| 5    | 2400054  | 5    | Aluminum Gasket Shim, .003"        |
| 6    | 2900116  | 4    | Cap Screw, Soc. Hd., #10-24 x 3/4" |

## **Adjustable Roller Assembly #4647108**



| ITEM | PART NO. | QTY. | DESCRIPTION               |
|------|----------|------|---------------------------|
| 1    | 4647115  | 2    | Plastic Roller            |
| 2    | 4647120  | 1    | Shaft, Adjustable Roller  |
| 3    | 4647121  | 1    | Spacer, Adjustable Roller |
| 4    | 4647122  | 2    | Roller Adjuster           |

Intentionally Blank

## EQUIPMENT AND PARTS WARRANTY

Diamond Products warrants all equipment manufactured by it against defects in workmanship or materials for a period of one (1) year from the date of shipment to Customer.

The responsibility of Diamond Products under this Warranty is limited to replacement or repair of defective parts at Diamond Products' Elyria, Ohio factory, or at a point designated by it, of such parts as shall appear to us upon inspection at such parts, to have been defective in material or workmanship, with expense for transportation and labor borne by Customer.

In no event shall Diamond Products be liable for consequential or incidental damages arising out of the failure of any Product to operate properly.

Integral units such as engines, electric motors, batteries, transmissions, etc., are excluded from this Warranty and are subject to the prime manufacturer's warranty.

THIS WARRANTY IS IN LIEU OF ALL OTHER WARRANTIES, EXPRESSED OR IMPLIED, AND ALL SUCH OTHER WARRANTIES ARE HEREBY DISCLAIMED.



333 Prospect Street, Elyria, Ohio 44035  
(440) 323-4616 • (800) 321-5336 • Fax (440) 323-8689  
[www.diamondproducts.com](http://www.diamondproducts.com)